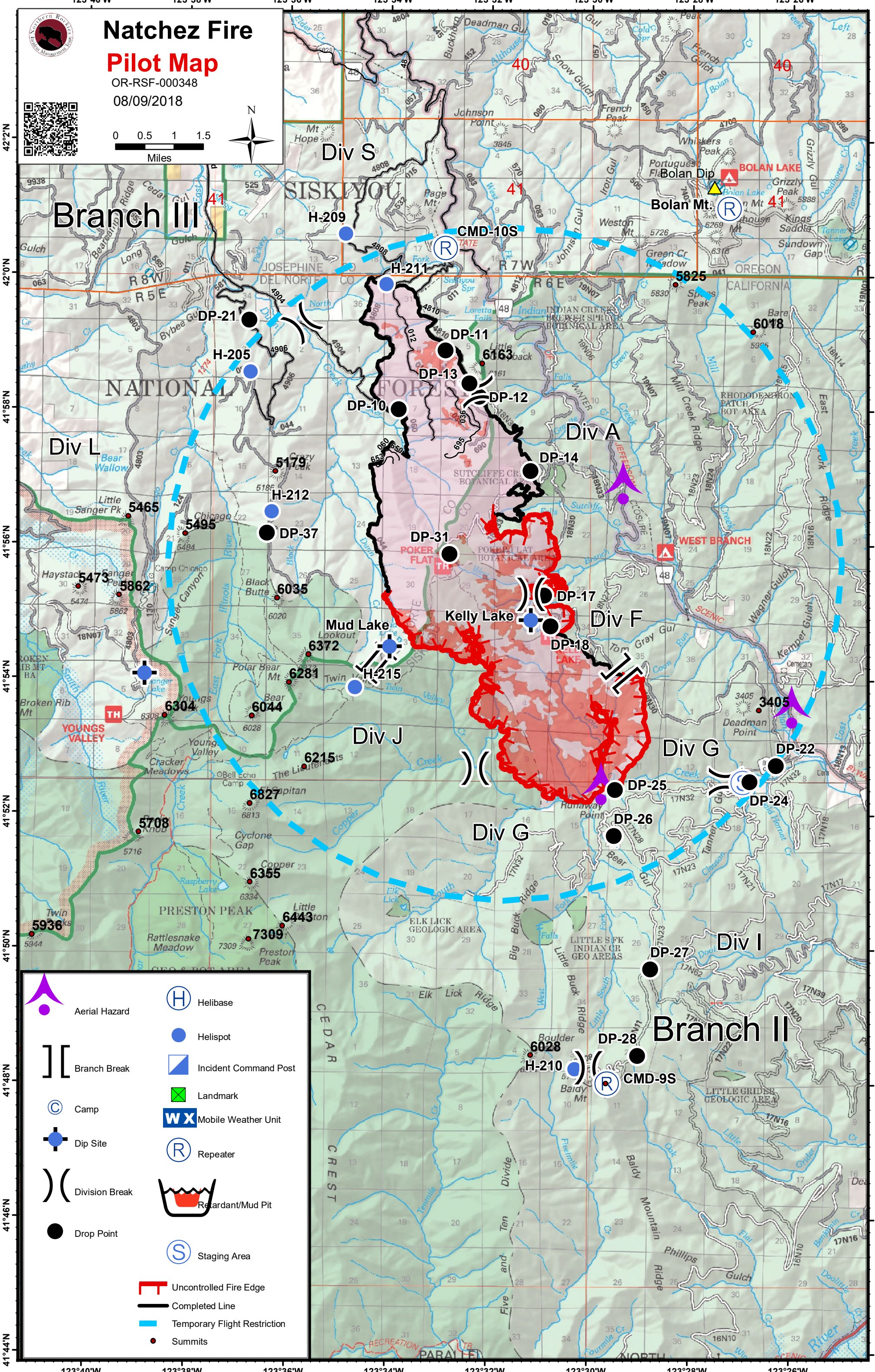
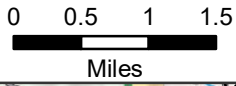


# Natchez Fire

## Pilot Map

OR-RSF-000348

08/09/2018



	Aerial Hazard		Helibase
	Helispot		Incident Command Post
	Camp		Landmark
	Dip Site		Mobile Weather Unit
	Drop Point		Repeater
	Uncontrolled Fire Edge		Retardant/Mud Pit
	Completed Line		Staging Area
	Temporary Flight Restriction		Summits



Feature Category	Label	Comments	Latitude	Longitude
		There is nice trailer and pond here - but pond has major cable running over it. This will NOT be used as a dip site - EVER. Please put correct symbology on it!	41° 52.285'	-123° 29.704'
Aerial Hazard		Power line crossing	41° 56.779'	-123° 29.357'
Aerial Hazard		Power line crossing	41° 53.464'	-123° 25.986'
Camp			42° 0.405'	-123° 32.918'
Dip Site	Kelly Lake		41° 54.880'	-123° 31.180'
Dip Site	Mud Lake		41° 54.480'	-123° 33.980'
		Sanger Lake dipsite approved per Klamath NF	41° 54.064'	-123° 38.844'
Dip Site			41° 54.064'	-123° 38.844'
Drop Point	DP-10		41° 58.004'	-123° 33.828'
Drop Point	DP-12	A/L Break	41° 58.197'	-123° 32.229'
Drop Point	DP-21		41° 59.319'	-123° 36.812'
Drop Point	DP-13		41° 58.392'	-123° 32.428'
Drop Point	DP-14		41° 57.098'	-123° 31.202'
Drop Point	DP-37		41° 56.158'	-123° 36.434'
Drop Point	DP-31		41° 55.856'	-123° 32.802'
Drop Point	DP-11		41° 58.879'	-123° 32.907'
Drop Point	DP-17		41° 55.247'	-123° 30.914'
Drop Point	DP-18		41° 54.791'	-123° 30.785'
		intersection of 17N32Rd and south fork. MOVED DP22 IN COLLECTOR TO REFLECT MARKED LOCATION IN FIELD -		
Drop Point	DP-22	Branch 2	41° 52.736'	-123° 26.297'
Drop Point	DP-24		41° 52.494'	-123° 26.814'
Drop Point	DP-26		41° 51.683'	-123° 29.505'
Drop Point	DP-28		41° 48.423'	-123° 29.015'
Drop Point	DP-27		41° 49.706'	-123° 28.769'
Drop Point	DP-25		41° 52.368'	-123° 29.485'
Helibase		Illinois Valley Airport	42° 6.373'	-123° 41.029'
Helispot	H-209	1 way Type 2	42° 0.607'	-123° 34.901'
Helispot	H-205		41° 58.553'	-123° 36.781'
Helispot	H-210		41° 48.222'	-123° 30.258'
Helispot	H-211		41° 59.861'	-123° 34.089'
Helispot	H-212		41° 56.479'	-123° 36.344'
		5,600'. Approved for type 1, 2, and 3 helicopters		
Helispot	H-215		41° 47.812'	-123° 22.289'
Incident Command	Natchez ICP		41° 47.812'	-123° 22.289'
		End of two track road, impassible by vehicle from road washout	41° 51.363'	-123° 29.986'
Other			41° 51.363'	-123° 29.986'
Repeater	CMD-10S		42° 0.405'	-123° 32.918'
Repeater	Bolan Mt.		42° 1.007'	-123° 27.271'
Repeater			42° 1.407'	-123° 15.287'
Repeater	Dutchman Peak		42° 2.608'	-122° 53.470'
Repeater	Mt. Ashland		42° 4.841'	-122° 43.019'
Repeater	CMD-9S		41° 48.012'	-123° 29.619'
Retardant/Mud Pit			41° 51.615'	-123° 22.975'
		Staging area for utv trailers, etc as requested by structure group	41° 52.485'	-123° 26.955'
Staging Area			41° 52.485'	-123° 26.955'
		5,000'. Unimproved LZ. Type 3 Helicopter only, HOGE. Dust abatement needed.		
Unimproved Landing Area				