

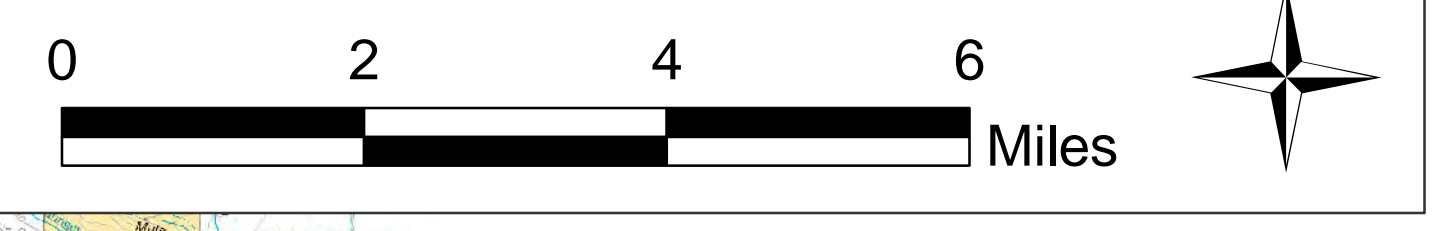


Natchez and Klondike Fires

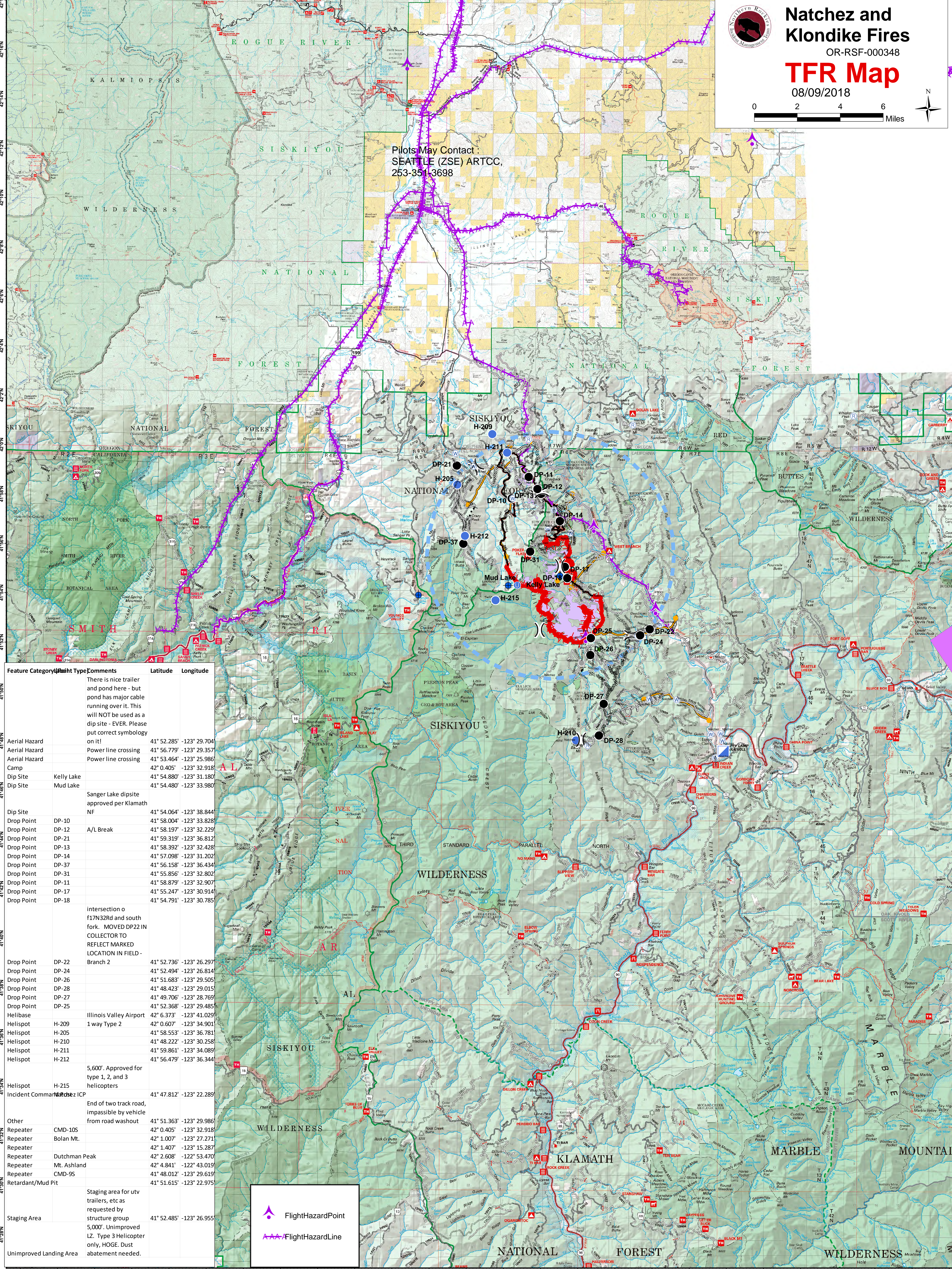
OR-RSF-000348

TFR Map

08/09/2018



Pilots May Contact :
SEATTLE (ZSE) ARTCC,
253-351-3698



Feature Category	Height Type	Comments	Latitude	Longitude
		There is nice trailer and pond here - but pond has major cable running over it. This will NOT be used as a dip site - EVER. Please put correct symbology on it!		
Aerial Hazard		Power line crossing	41° 52.285' -123° 29.704'	
Aerial Hazard		Power line crossing	41° 56.779' -123° 29.357'	
Aerial Hazard		Power line crossing	41° 53.464' -123° 25.986'	
Camp			42° 0.405' -123° 32.918'	
Dip Site	Kelly Lake		41° 54.880' -123° 31.180'	
Dip Site	Mud Lake		41° 54.480' -123° 33.980'	
		Sanger Lake dipsite approved per Klamath NF		
Dip Site			41° 54.064' -123° 38.844'	
Drop Point	DP-10		41° 58.004' -123° 33.828'	
Drop Point	DP-12	A/L Break	41° 58.197' -123° 32.229'	
Drop Point	DP-21		41° 59.319' -123° 36.812'	
Drop Point	DP-13		41° 58.392' -123° 32.428'	
Drop Point	DP-14		41° 57.098' -123° 31.202'	
Drop Point	DP-37		41° 56.158' -123° 36.434'	
Drop Point	DP-31		41° 55.856' -123° 32.802'	
Drop Point	DP-11		41° 58.879' -123° 32.907'	
Drop Point	DP-17		41° 55.247' -123° 30.914'	
Drop Point	DP-18		41° 54.791' -123° 30.785'	
		intersection of f17N32Rd and south fork. MOVED DP22 IN COLLECTOR TO REFLECT MARKED LOCATION IN FIELD - Branch 2		
Drop Point	DP-22		41° 52.736' -123° 26.297'	
Drop Point	DP-24		41° 52.494' -123° 26.814'	
Drop Point	DP-26		41° 51.683' -123° 29.505'	
Drop Point	DP-28		41° 48.423' -123° 29.015'	
Drop Point	DP-27		41° 49.706' -123° 28.769'	
Drop Point	DP-25		41° 52.368' -123° 29.485'	
Helibase		Illinois Valley Airport	42° 6.373' -123° 41.029'	
Helispot	H-209	1 way Type 2	42° 0.607' -123° 34.901'	
Helispot	H-205		41° 58.553' -123° 36.781'	
Helispot	H-210		41° 48.222' -123° 30.258'	
Helispot	H-211		41° 59.861' -123° 34.089'	
Helispot	H-212		41° 56.479' -123° 36.344'	
Helispot	H-215	5,600'. Approved for type 1, 2, and 3 helicopters		
Incident Command	Natchez ICP		41° 47.812' -123° 22.289'	
		End of two track road, impassible by vehicle from road washout		
Other			41° 51.363' -123° 29.986'	
Repeater	CMD-10S		42° 0.405' -123° 32.918'	
Repeater	Bolan Mt.		42° 1.007' -123° 27.271'	
Repeater			42° 1.407' -123° 15.287'	
Repeater	Dutchman Peak		42° 2.608' -122° 53.470'	
Repeater	Mt. Ashland		42° 4.841' -122° 43.019'	
Repeater	CMD-9S		41° 48.012' -123° 29.619'	
Retardant/Mud Pit			41° 51.615' -123° 22.975'	
Staging Area		Staging area for utv trailers, etc as requested by structure group		
		5,000'. Unimproved LZ. Type 3 Helicopter only, HOGE. Dust abatement needed.		
Unimproved Landing Area			41° 52.485' -123° 26.955'	

FlightHazardPoint
 FlightHazardLine