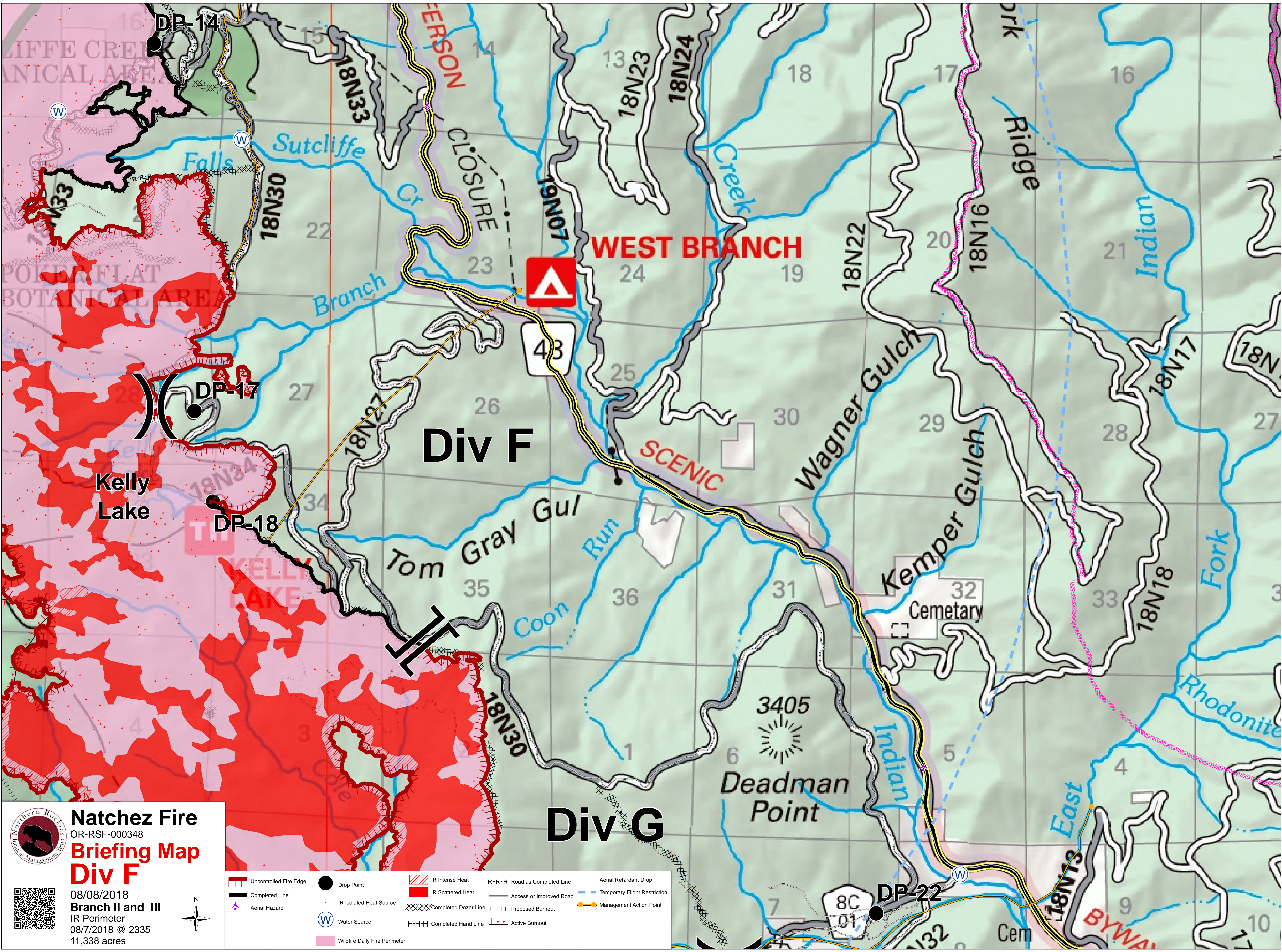


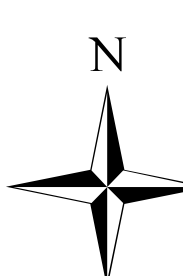



Natchez Fire
 OR-RSF-000348
Briefing Map
Div A
 08/08/2018
 Branch II and III
 IR Perimeter
 08/7/2018 @ 2335
 11,338 acres

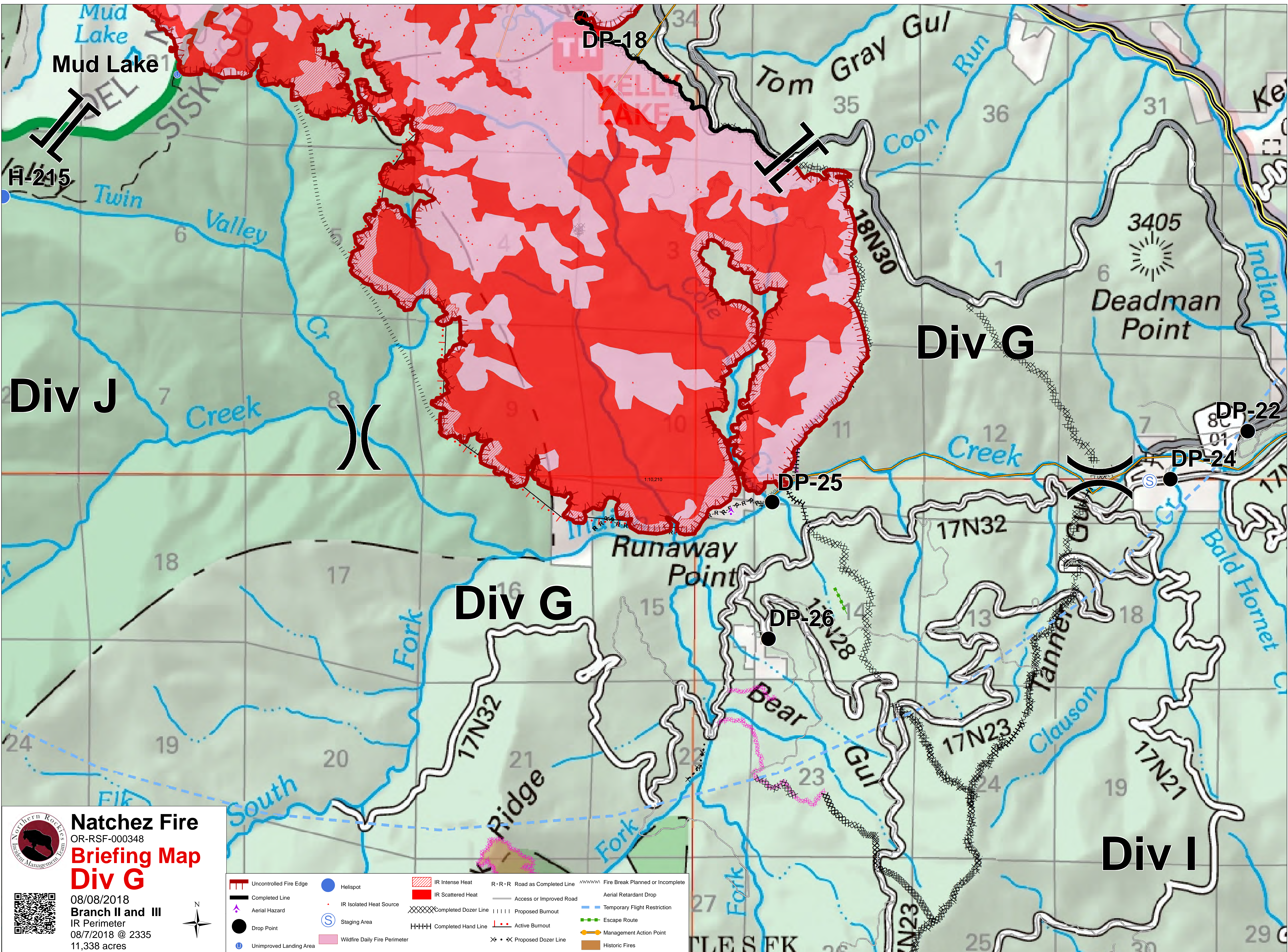
| | | | | |
|-------------------------------|-------------------------|----------------------|------------------------------|------------------------------|
| Uncontrolled Fire Edge | Drop Point | IR Intense Heat | R-R-R Road as Completed Line | Planned Fire Line |
| Completed Line | IR Isolated Heat Source | IR Scattered Heat | Access or Improved Road | Temporary Flight Restriction |
| Aerial Hazard | Water Source | Completed Dozer Line | Active Burnout | Management Action Point |
| Wildfire Daily Fire Perimeter | Completed Hand Line | Proposed Dozer Line | | |



Natchez Fire
 OR-RSF-000348
Briefing Map
Div F
 08/08/2018
 Branch II and III
 IR Perimeter
 08/7/2018 @ 2335
 11,338 acres

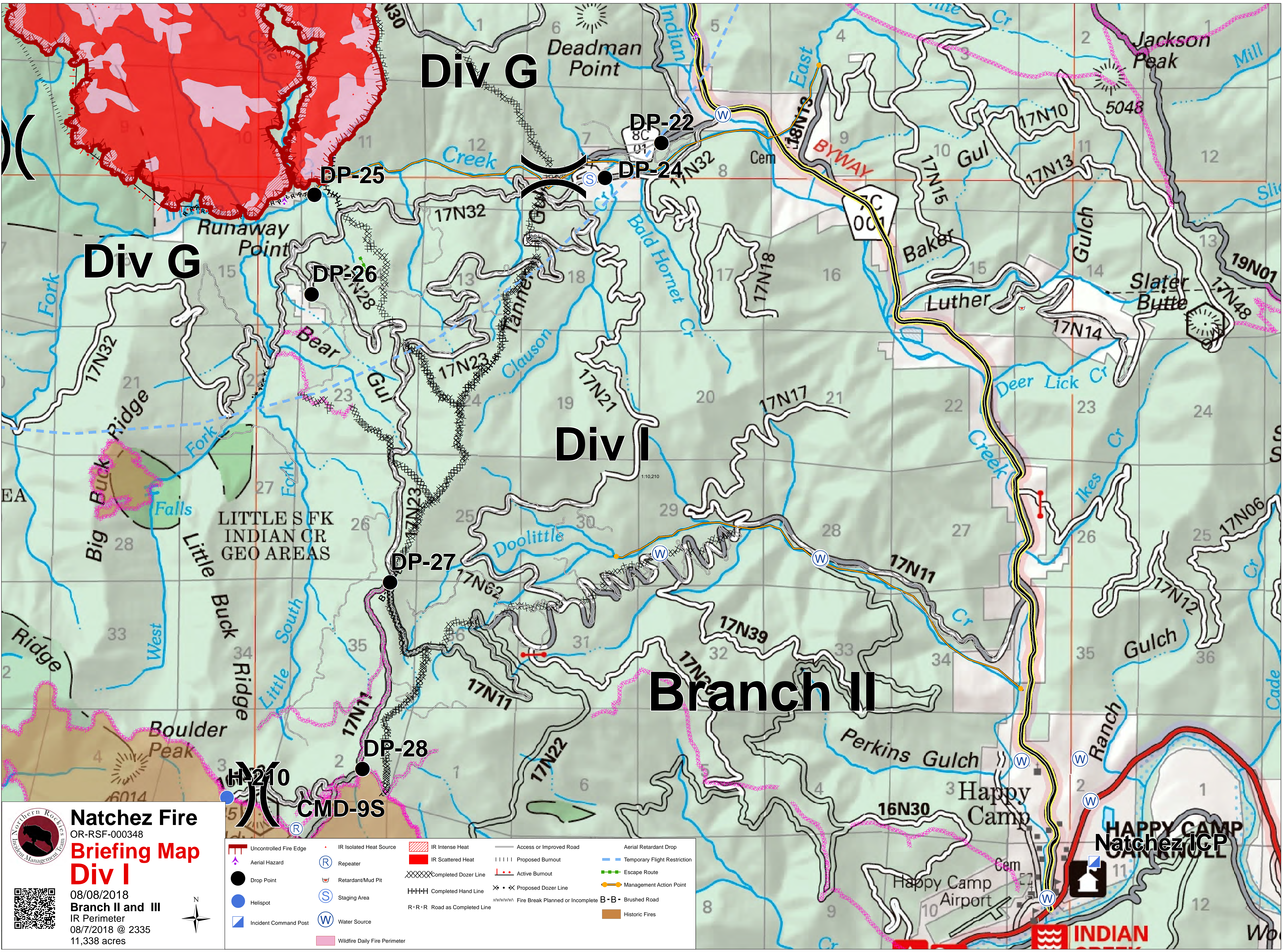





| | | | | |
|-------------------------------|-------------------------|----------------------|------------------------------|------------------------------|
| Uncontrolled Fire Edge | Drop Point | IR Intense Heat | R-R-R Road as Completed Line | Aerial Retardant Drop |
| Completed Line | IR Isolated Heat Source | IR Scattered Heat | Access or Improved Road | Temporary Flight Restriction |
| Aerial Hazard | Water Source | Completed Dozer Line | Proposed Burnout | Management Action Point |
| Wildfire Daily Fire Perimeter | | Completed Hand Line | Active Burnout | |



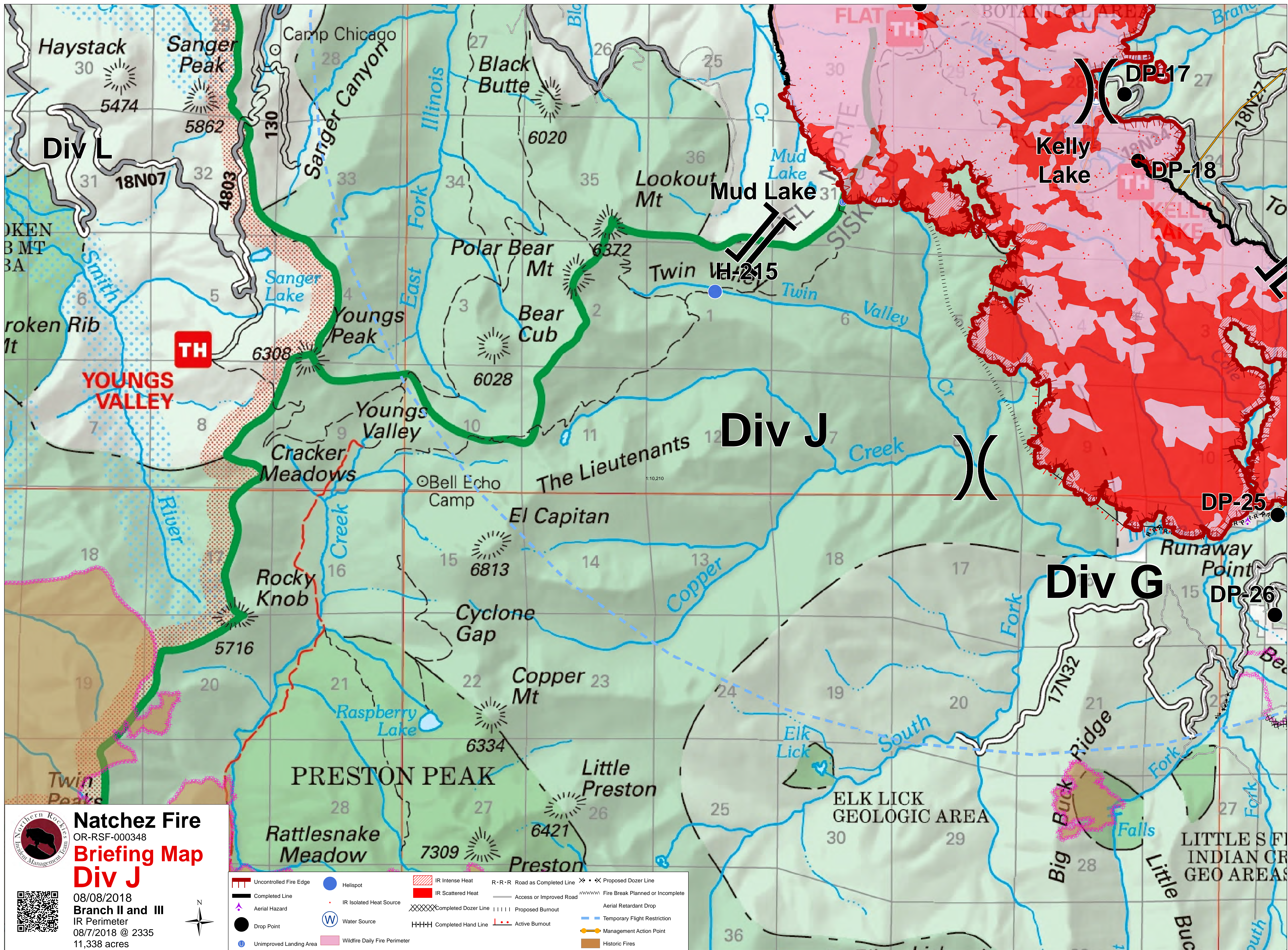

Natchez Fire
 OR-RSF-000348
Briefing Map
Div G
 08/08/2018
 Branch II and III
 IR Perimeter
 08/7/2018 @ 2335
 11,338 acres

| | | | | |
|--|--|--|--|--|
| | | | | |
| | | | | |
| | | | | |
| | | | | |
| | | | | |




Natchez Fire
 OR-RSF-000348
Briefing Map
Div I
 08/08/2018
 Branch II and III
 IR Perimeter
 08/7/2018 @ 2335
 11,338 acres

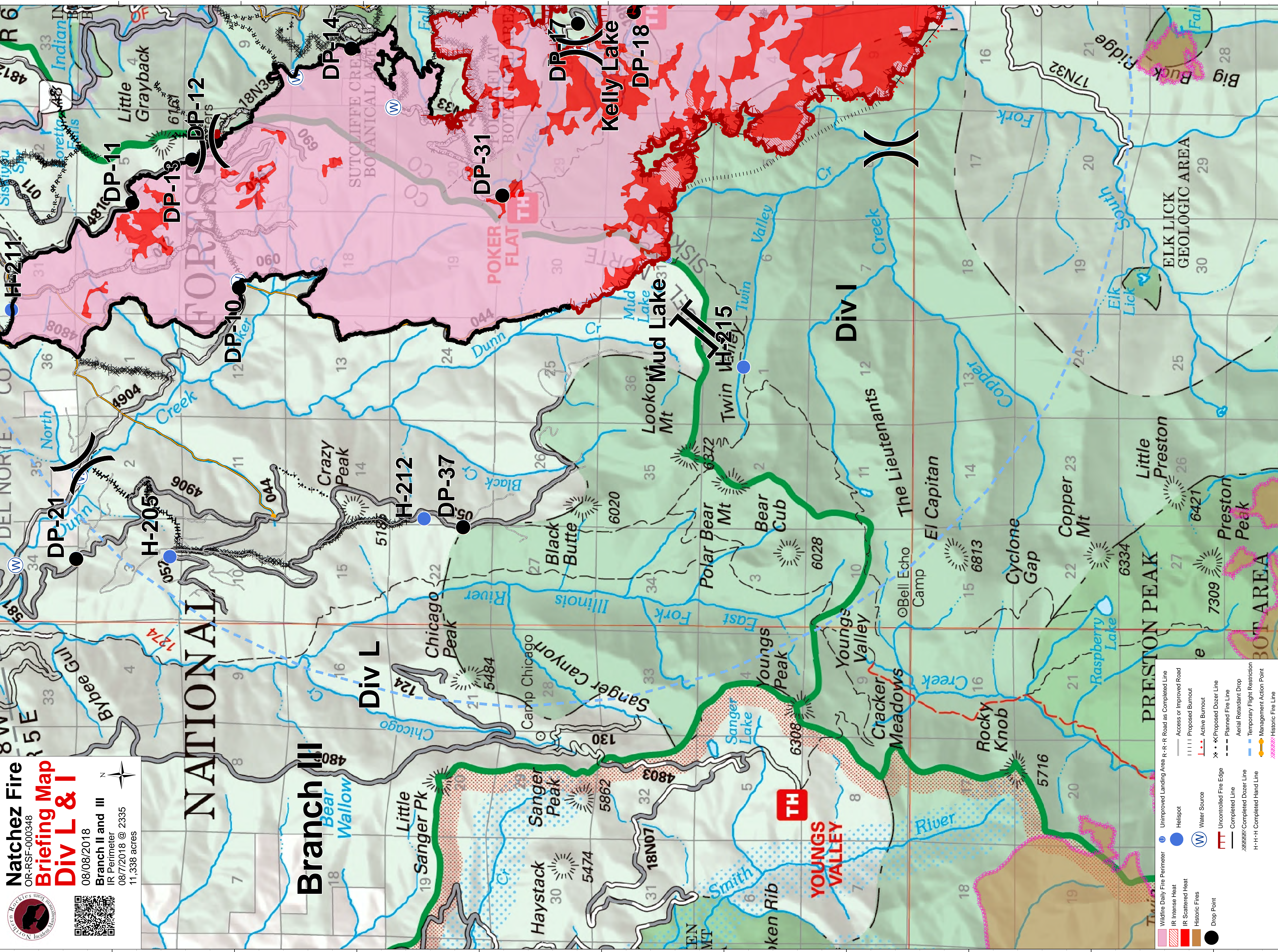
| | | | | |
|--|--|--|--|--|
| | | | | |
| | | | | |
| | | | | |
| | | | | |
| | | | | |
| | | | | |



Natchez Fire
 OR-RSF-000348
Briefing Map
Div J
 08/08/2018
 Branch II and III
 IR Perimeter
 08/7/2018 @ 2335
 11,338 acres

| | | | | |
|--|--|--|--|--|
| | | | | |
| | | | | |
| | | | | |
| | | | | |
| | | | | |

Natchez Fire
 OR-RSF-000348
Briefing Map
Div L & I
 08/08/2018
 Branch II and III
 IR Perimeter
 08/7/2018 @ 2335
 11,338 acres



- Wildfire Daily Fire Perimeter
- IR Intense Heat
- IR Scattered Heat
- Historic Fires
- Drop Point
- Unimproved Landing Area
- Helisport
- Water Source
- Uncontrolled Fire Edge
- Completed Line
- Completed Dozer Line
- H-H-H Completed Hand Line
- Proposed or Improved Road
- Proposed Burnout
- Active Burnout
- Proposed Dozer Line
- Planned Fire Line
- Aerial Retardant Drop
- Temporary Flight Restriction
- Management Action Point
- Historic Fire Line