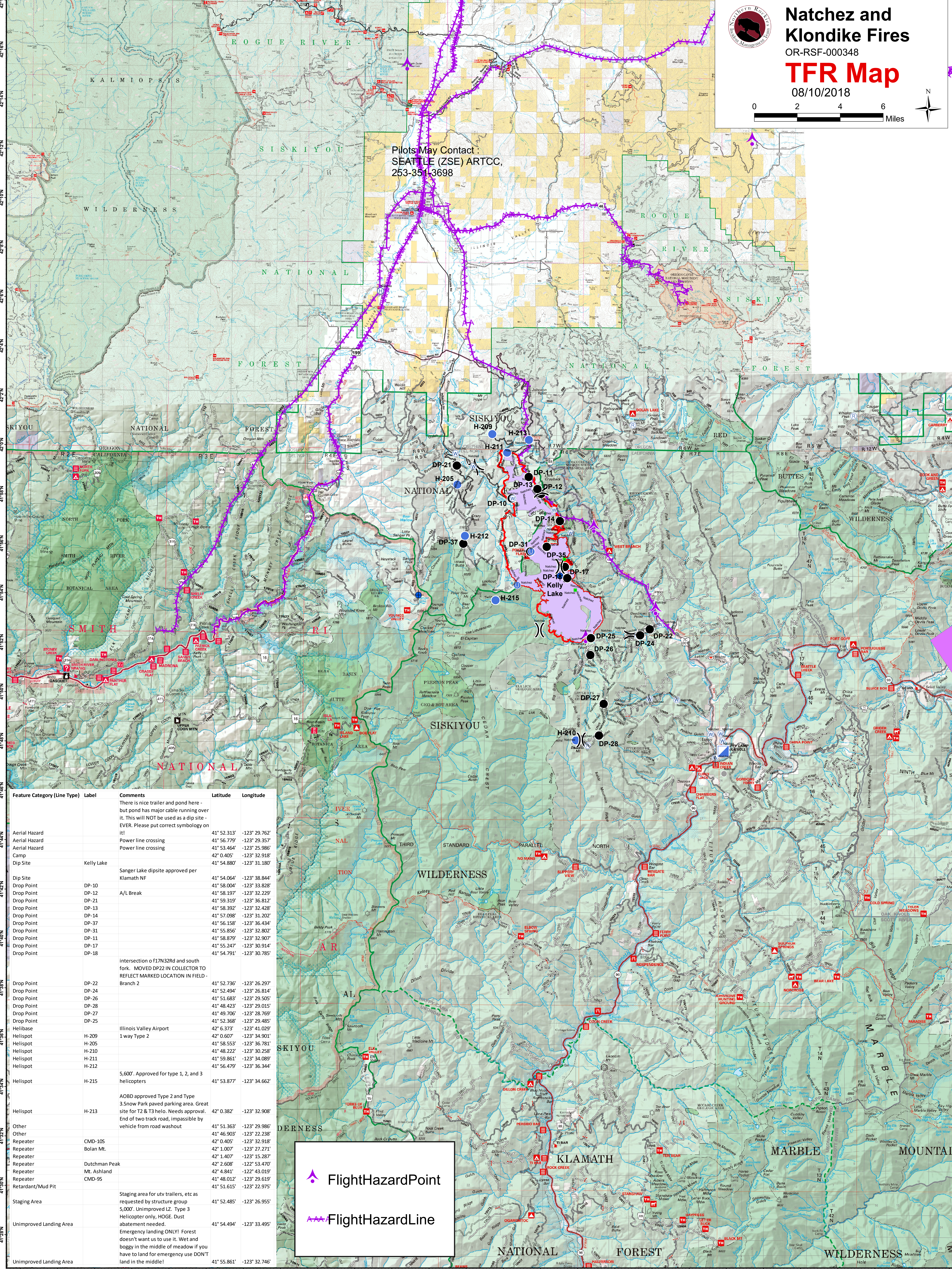




Natchez and Klondike Fires
 OR-RSF-000348
TFR Map
 08/10/2018



Pilots May Contact :
 SEATTLE (ZSE) ARTCC,
 253-35113698



Feature Category (Line Type)	Label	Comments	Latitude	Longitude
Aerial Hazard		There is nice trailer and pond here - but pond has major cable running over it. This will NOT be used as a dip site - EVER. Please put correct symbology on it!	41° 52.313'	-123° 29.762'
Aerial Hazard		Power line crossing	41° 56.779'	-123° 29.357'
Aerial Hazard		Power line crossing	41° 53.464'	-123° 25.986'
Camp			42° 0.405'	-123° 32.918'
Dip Site	Kelly Lake		41° 54.880'	-123° 31.180'
Dip Site		Sanger Lake dipsite approved per Klamath NF	41° 54.064'	-123° 38.844'
Drop Point	DP-10		41° 58.004'	-123° 33.828'
Drop Point	DP-12	A/L Break	41° 58.197'	-123° 32.229'
Drop Point	DP-21		41° 59.319'	-123° 36.812'
Drop Point	DP-13		41° 58.392'	-123° 32.428'
Drop Point	DP-14		41° 57.098'	-123° 31.202'
Drop Point	DP-37		41° 56.158'	-123° 36.434'
Drop Point	DP-31		41° 55.856'	-123° 32.802'
Drop Point	DP-11		41° 58.879'	-123° 32.907'
Drop Point	DP-17		41° 55.247'	-123° 30.914'
Drop Point	DP-18		41° 54.791'	-123° 30.785'
Drop Point	DP-22	intersection of f17N32Rd and south fork. MOVED DP22 IN COLLECTOR TO REFLECT MARKED LOCATION IN FIELD-Branch 2	41° 52.736'	-123° 26.297'
Drop Point	DP-24		41° 52.494'	-123° 26.814'
Drop Point	DP-26		41° 51.683'	-123° 29.505'
Drop Point	DP-28		41° 48.423'	-123° 29.015'
Drop Point	DP-27		41° 49.706'	-123° 28.769'
Drop Point	DP-25		41° 52.368'	-123° 29.485'
Helibase			42° 6.373'	-123° 41.029'
Helispot	H-209	1 way Type 2	42° 0.607'	-123° 34.901'
Helispot	H-205		41° 58.553'	-123° 36.781'
Helispot	H-210		41° 48.222'	-123° 30.258'
Helispot	H-211		41° 59.861'	-123° 34.089'
Helispot	H-212		41° 56.479'	-123° 36.344'
Helispot	H-215	5,600'. Approved for type 1, 2, and 3 helicopters	41° 53.877'	-123° 34.662'
Helispot	H-213	AODB approved Type 2 and Type 3. Snow Park paved parking area. Great site for T2 & T3 helo. Needs approval. End of two track road, impassible by vehicle from road washout	42° 0.382'	-123° 32.908'
Other			41° 51.363'	-123° 29.986'
Other			41° 46.903'	-123° 22.238'
Repeater	CMD-10S		42° 0.405'	-123° 32.918'
Repeater	Bolan Mt.		42° 1.007'	-123° 27.271'
Repeater			42° 1.407'	-123° 15.287'
Repeater	Dutchman Peak		42° 2.608'	-122° 53.470'
Repeater	Mt. Ashland		42° 4.841'	-122° 43.019'
Repeater			41° 48.012'	-123° 29.619'
Repeater/Mud Pit	CMD-9S		41° 51.615'	-123° 22.975'
Staging Area		Staging area for utv trailers, etc as requested by structure group 5,000'. Unimproved LZ. Type 3 Helicopter only, HOGE. Dust abatement needed.	41° 52.485'	-123° 26.955'
Unimproved Landing Area		Emergency landing ONLY! Forest doesn't want us to use it. Wet and boggy in the middle of meadow if you have to land for emergency use DONT land in the middle!	41° 54.494'	-123° 33.495'
Unimproved Landing Area			41° 55.861'	-123° 32.746'

FlightHazardPoint

FlightHazardLine