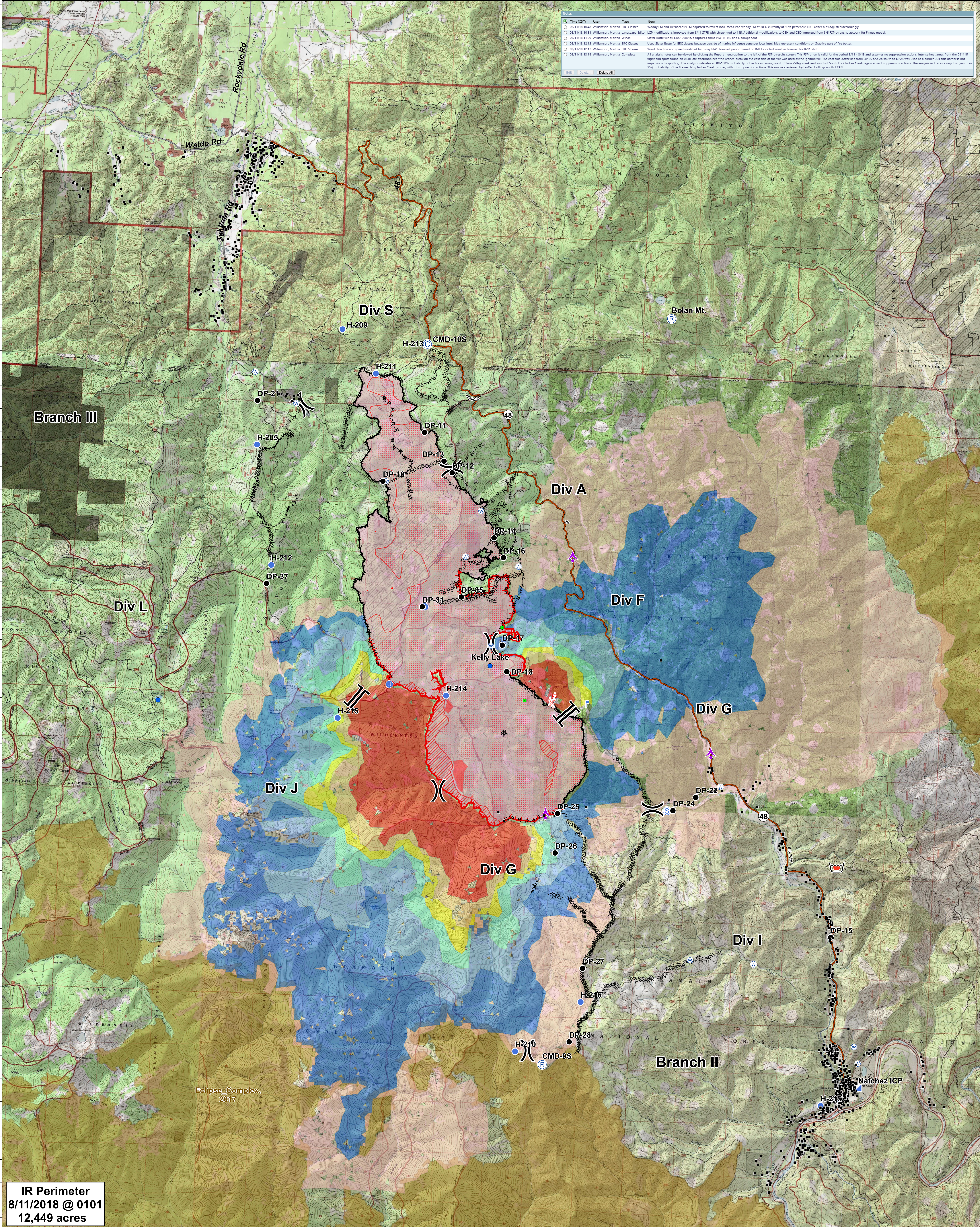


Time	User	Date	Note
08/11/18 10:48	Williamson, Martha	ERC Classes	Woody FM and Herbaceous FM adjusted to reflect local measured woody FM at 80%, currently at 90th percentile. ERC Other bins adjusted accordingly.
08/11/18 10:53	Williamson, Martha	Landscape Editor	LCP modifications imported from 8/11 5/18 with JWB mod to 146. Additional modifications to CBN and CID imported from 8/5 FSPPro runs to account for Finney model.
08/11/18 11:18	Williamson, Martha	Winds	State Route winds 1100-2000 to capture some NW, N, NE and E component.
08/11/18 12:15	Williamson, Martha	ERC Classes	Used State Route for ERC classes because outside of marine influence zone per local intel. May represent conditions on S/active part of the better.
08/11/18 12:17	Williamson, Martha	ERC Stream	Wind direction and speed modified for 3 day NWS forecast period based on IMET incident weather forecast for 8/11 shift.
08/11/18 13:18	Williamson, Martha	Complete	All analysis notes can be viewed by clicking the Report menu option to the left of the FSPPro results screen. This FSPPro run is valid for the period 8/11 - 8/18 and assumes no suppression actions. Intense heat areas from the 0811 01 flight and spots based on 0110 line observation near the Branch break on the east side of the fire was used as the ignition file. The east side closer line from DP 25 and 26 south to D53 was used as a barrier BUT this barrier is not impervious to spotting. The analysis indicates an 80-100% probability of the fire occurring west of Twin Valley creek and south of South Fork Indian Creek, again absent suppression actions. The analysis indicates a very low (less than 1%) probability of the fire reaching Indian Creek proper, without suppression actions. This run was reviewed by Lathan Hollingsworth, LTJG.



IR Perimeter
8/11/2018 @ 0101
12,449 acres

Natchez Fire
 OR-RSF-000348
FSPPro 7-Day
 8/11/2018
 Branch II and III

FSPPro Analysis	5-19%	Dip Site	Landmark	Water Source	Uncontrolled Fire Edge	Fire Break Planned or Incomplete	IR Scattered Heat
Probability	0.2-4.9%	Drop Point	Lookout	Completed Line	Completed Dozer Line	Planned Fire Line	Fire History
80-100%	<0.2%	Unimproved Landing Area	Repeater	H-H-H Completed Hand Line	R-R-R Road as Completed Line	Aerial Retardant Drop	Inventory Roadless
60-79%		Stuctures	Retardant/Mud Pit	R-R-R Road as Completed Line	Proposed Dozer Line	(XXXXX) Ridge/Geographic Feature	
40-59%		Aerial Hazard	Spot Fire	Branch Break		IR Intense Heat	
20-39%		Incident Command Post	Staging Area				
		Camp					

0 0.5 1 Miles