

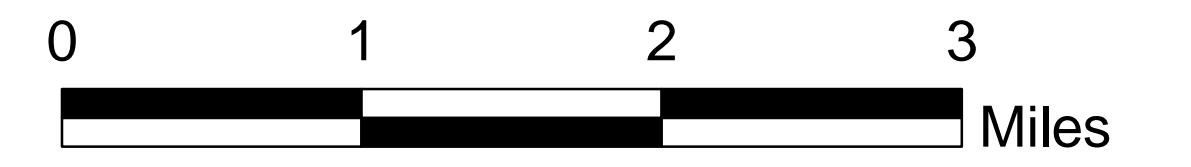


Natchez Fires

OR-RSF-000348

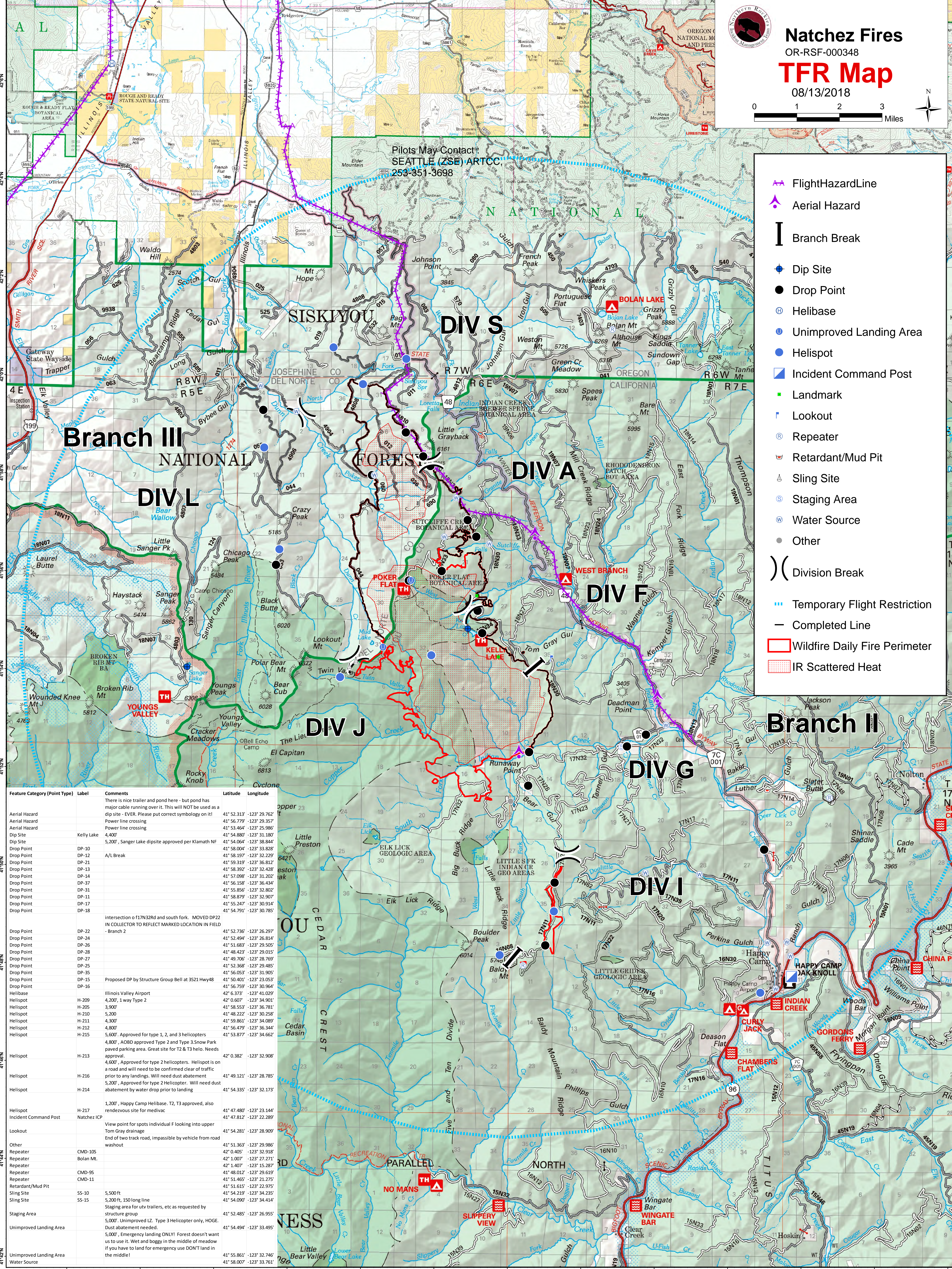
TFR Map

08/13/2018



- FlightHazardLine
- Aerial Hazard
- Branch Break
- Dip Site
- Drop Point
- Helibase
- Unimproved Landing Area
- Helispot
- Incident Command Post
- Landmark
- Lookout
- Repeater
- Retardant/Mud Pit
- Sling Site
- Staging Area
- Water Source
- Other
- Division Break
- Temporary Flight Restriction
- Completed Line
- Wildfire Daily Fire Perimeter
- IR Scattered Heat

Pilots May Contact:
SEATTLE (ZSE) ARTCC
253-351-3698



Feature Category (Point Type)	Label	Comments	Latitude	Longitude
Aerial Hazard		There is nice trailer and pond here - but pond has major cable running over it. This will NOT be used as a dip site - EVER. Please put correct symbology on it!	41° 52.313' -123° 29.762'	
Aerial Hazard		Power line crossing	41° 56.779' -123° 29.357'	
Aerial Hazard		Power line crossing	41° 53.464' -123° 25.986'	
Dip Site	Kelly Lake	4,400'	41° 54.880' -123° 31.180'	
Dip Site		5,200', Sanger Lake dip site approved per Klamath NF	41° 54.064' -123° 38.844'	
Drop Point	DP-10		41° 58.004' -123° 33.828'	
Drop Point	DP-12	A/L Break	41° 58.197' -123° 32.229'	
Drop Point	DP-21		41° 59.319' -123° 36.812'	
Drop Point	DP-13		41° 58.392' -123° 32.428'	
Drop Point	DP-14		41° 57.098' -123° 31.202'	
Drop Point	DP-37		41° 56.158' -123° 36.434'	
Drop Point	DP-31		41° 55.856' -123° 32.802'	
Drop Point	DP-11		41° 58.879' -123° 32.907'	
Drop Point	DP-17		41° 55.247' -123° 30.914'	
Drop Point	DP-18		41° 54.791' -123° 30.785'	
Drop Point	DP-22	intersection of f17N32Rd and south fork. MOVED DP22 IN COLLECTOR TO REFLECT MARKED LOCATION IN FIELD - Branch 2	41° 52.736' -123° 26.297'	
Drop Point	DP-24		41° 52.494' -123° 26.814'	
Drop Point	DP-26		41° 51.683' -123° 29.505'	
Drop Point	DP-28		41° 48.423' -123° 29.015'	
Drop Point	DP-27		41° 49.706' -123° 28.769'	
Drop Point	DP-25		41° 52.368' -123° 29.485'	
Drop Point	DP-35		41° 56.053' -123° 31.905'	
Drop Point	DP-15	Proposed DP by Structure Group Bell at 3521 Hwy48	41° 50.401' -123° 32.053'	
Drop Point	DP-16		41° 56.759' -123° 30.964'	
Helibase		Illinois Valley Airport	42° 6.373' -123° 41.029'	
Helispot	H-209	4,200', 1 way Type 2	42° 0.607' -123° 34.901'	
Helispot	H-205	3,900'	41° 58.553' -123° 36.781'	
Helispot	H-210	5,200'	41° 48.222' -123° 30.258'	
Helispot	H-211	4,300'	41° 59.861' -123° 34.089'	
Helispot	H-212	4,800'	41° 56.479' -123° 36.344'	
Helispot	H-215	5,600', Approved for type 1, 2, and 3 helicopters 4,800', AODB approved Type 2 and Type 3 Snow Park paved parking area. Great site for T2 & T3 helo. Needs approval. 4,600', Approved for type 2 helicopters. Helispot is on a road and will need to be confirmed clear of traffic prior to any landings. Will need dust abatement 5,200', Approved for type 2 Helicopter. Will need dust abatement by water drop prior to landing	41° 53.877' -123° 34.662'	
Helispot	H-213		42° 0.382' -123° 32.908'	
Helispot	H-216		41° 49.121' -123° 28.785'	
Helispot	H-214		41° 54.335' -123° 32.173'	
Helispot	H-217	1,200', Happy Camp Helibase. T2, T3 approved, also rendezvous site for medivac	41° 47.480' -123° 23.144'	
Incident Command Post	Natchez ICP	View point for spots individual F looking into upper Tom Gray drainage	41° 47.812' -123° 22.289'	
Lookout		End of two track road, impassible by vehicle from road washout	41° 54.281' -123° 28.909'	
Other			41° 51.363' -123° 29.986'	
Repeater	CMD-105		42° 0.405' -123° 32.918'	
Repeater	Bolan Mt.		42° 1.007' -123° 27.271'	
Repeater	CMD-95		41° 40.7' -123° 15.287'	
Repeater	CMD-11		41° 48.012' -123° 29.619'	
Retardant/Mud Pit			41° 51.465' -123° 21.275'	
Sling Site	SS-10	5,500 ft	41° 51.615' -123° 22.975'	
Sling Site	SS-15	5,200 ft, 150 long line	41° 54.219' -123° 34.235'	
Staging Area		Staging area for utv trailers, etc as requested by structure group	41° 52.485' -123° 26.955'	
Unimproved Landing Area		5,000'. Unimproved LZ. Type 3 Helicopter only, HOGE. Dust abatement needed.	41° 54.494' -123° 33.495'	
Unimproved Landing Area		5,000'. Emergency landing ONLY! Forest doesn't want us to use it. Wet and boggy in the middle of meadow if you have to land for emergency use DON'T land in the middle!	41° 55.861' -123° 32.746'	
Water Source			41° 58.007' -123° 33.761'	