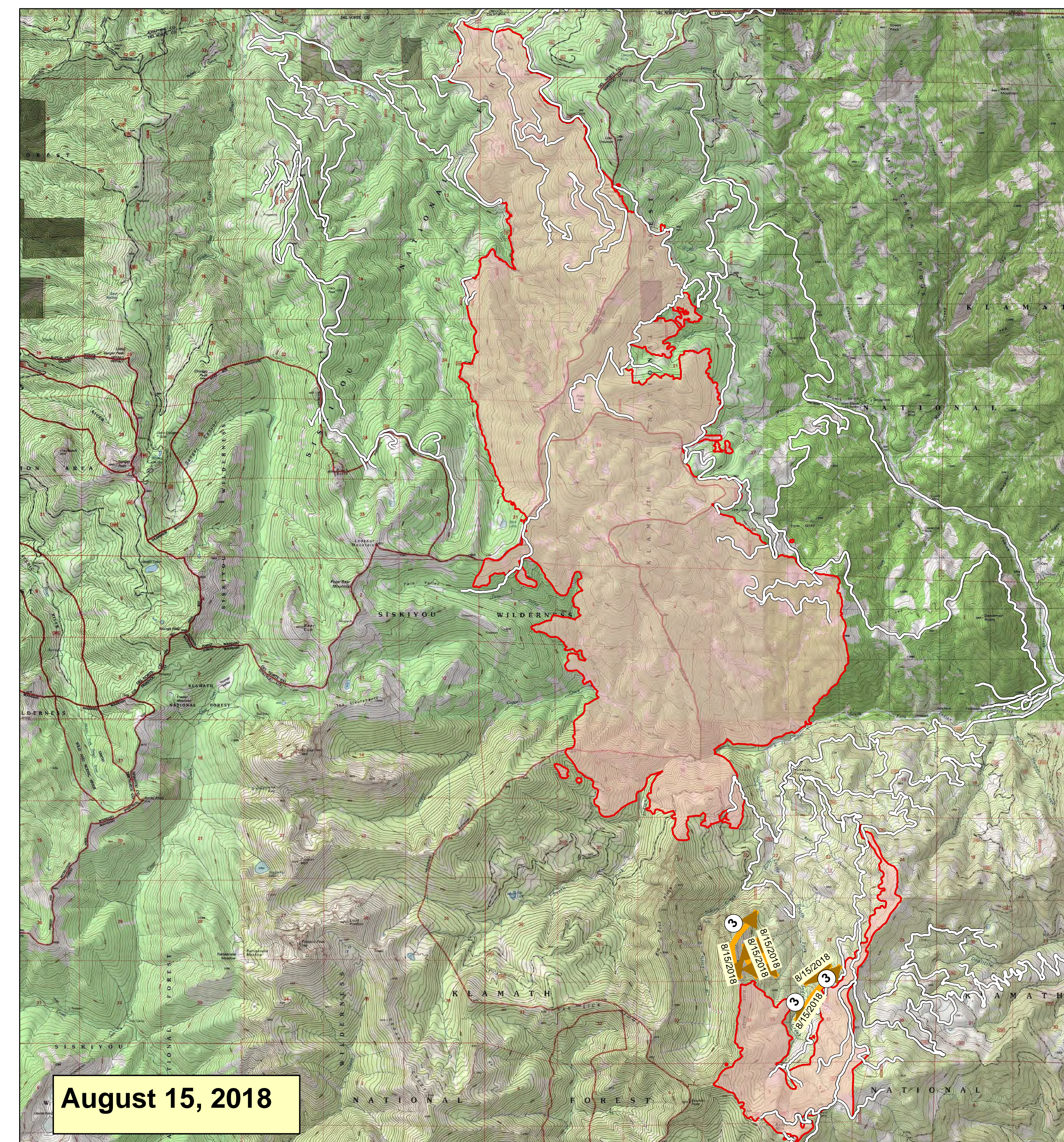
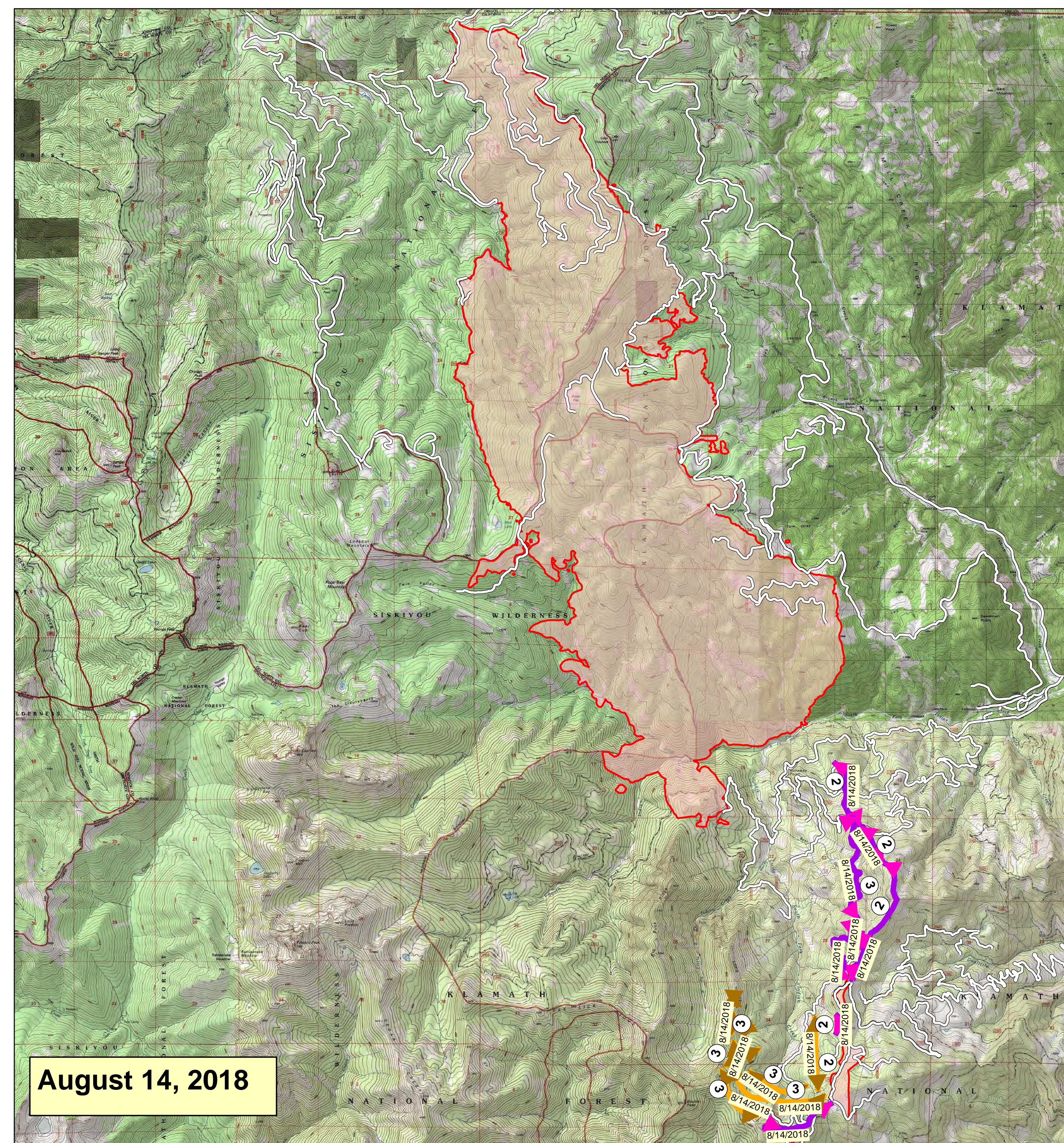
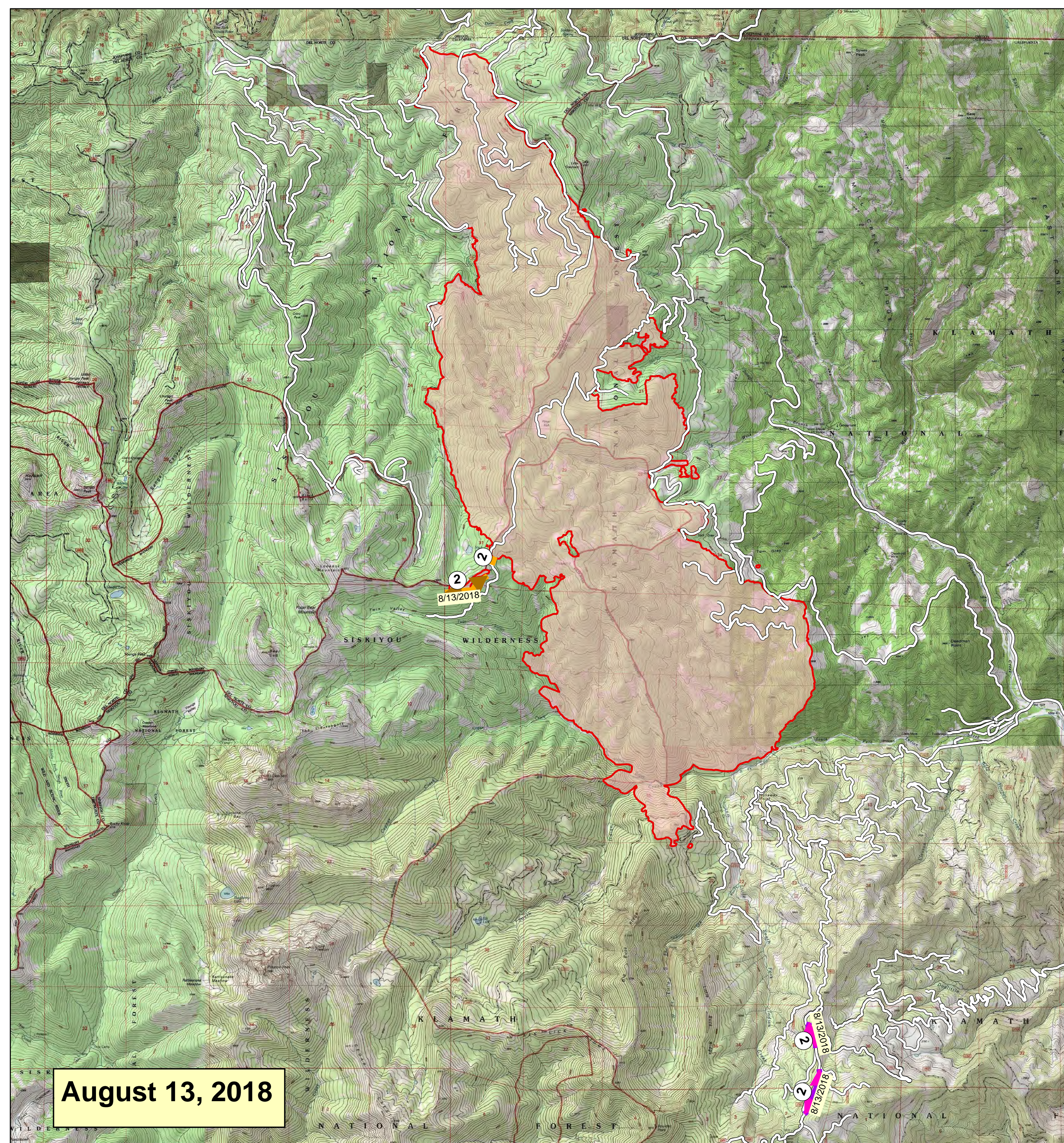
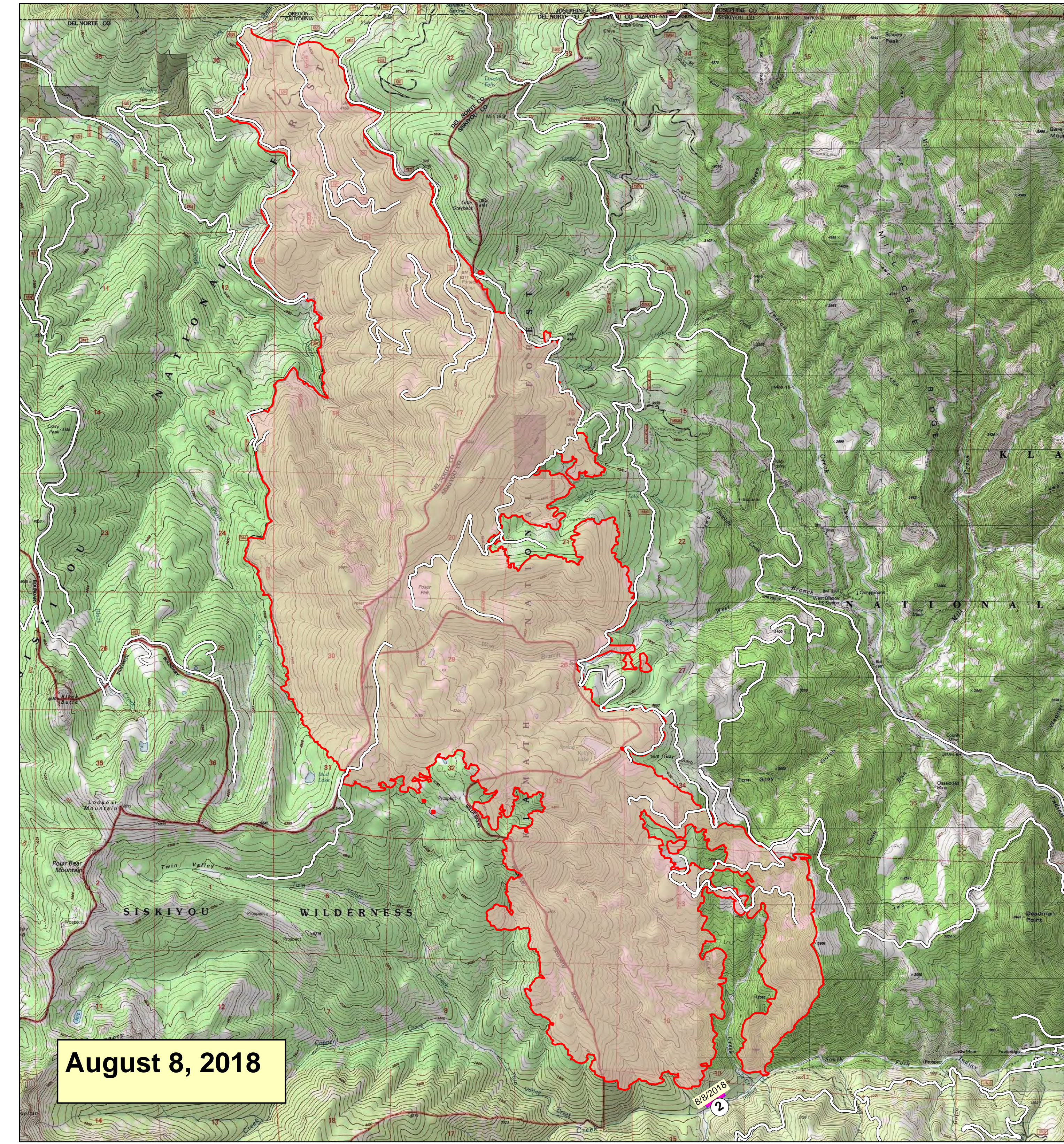
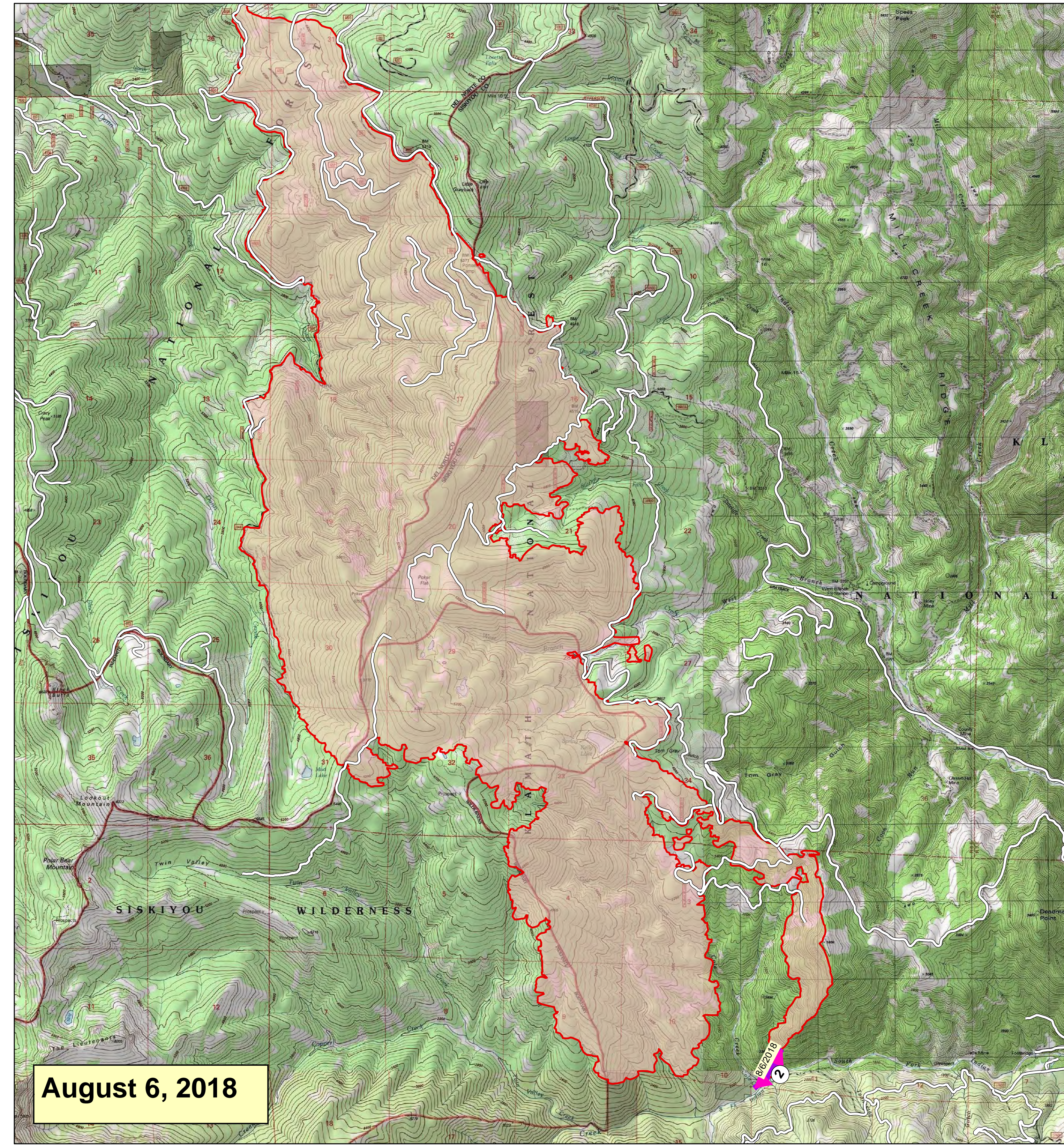
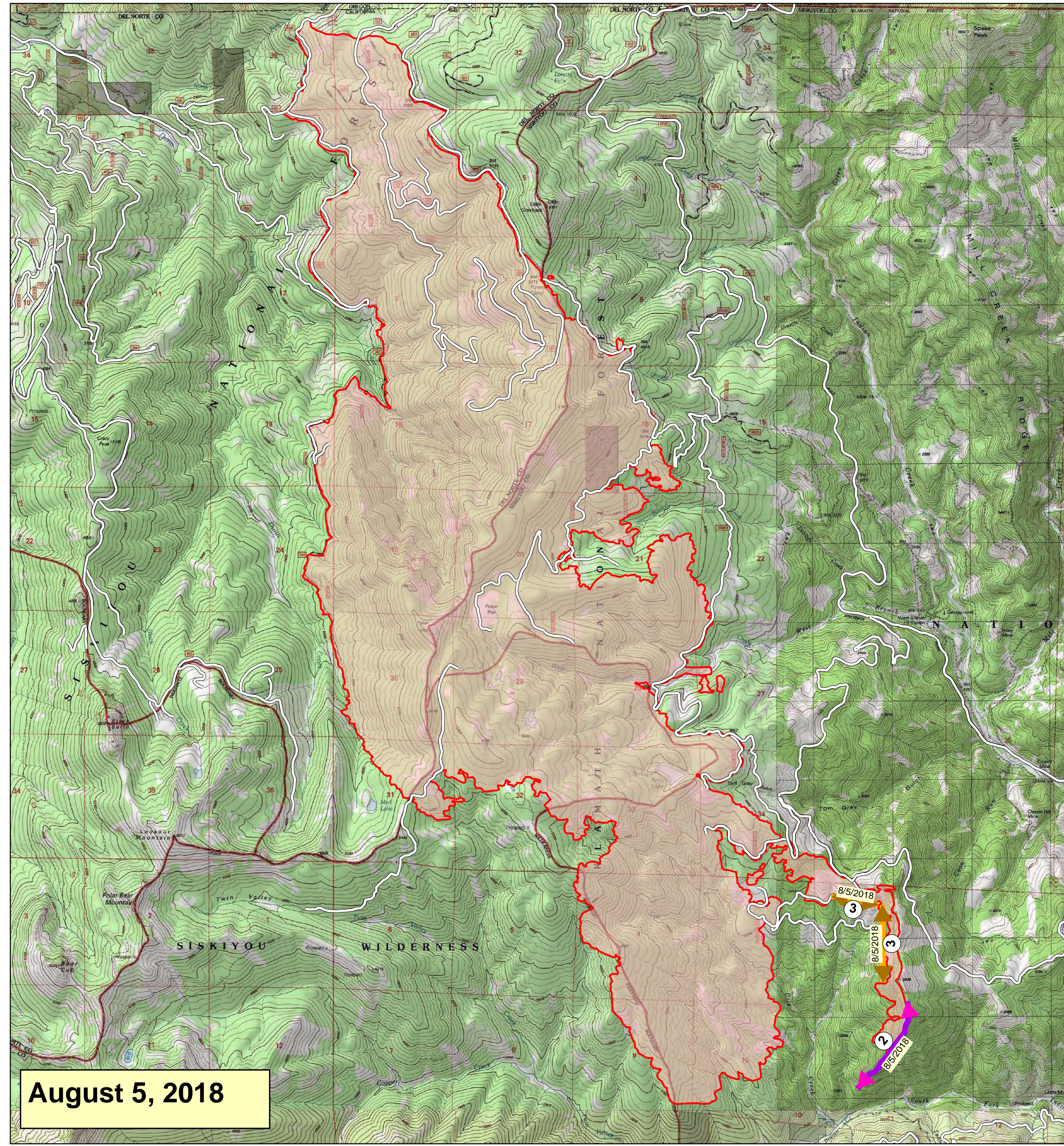




Natchez Fire Burnout Tracking Map



August 5 -
August 18, 2018

Burn Lines
 Aerial Ignition
 Ground Ignition

- 1 Imminent Threat to Firefighter/Public Safety
- 2 Protect Infrastructure
- 3 Reinforce and Improve Line, Add Depth
- 4 Fill gaps in line construction
- 5 Action necessary to establish and maintain low burn intensities