



# Natchez Fire

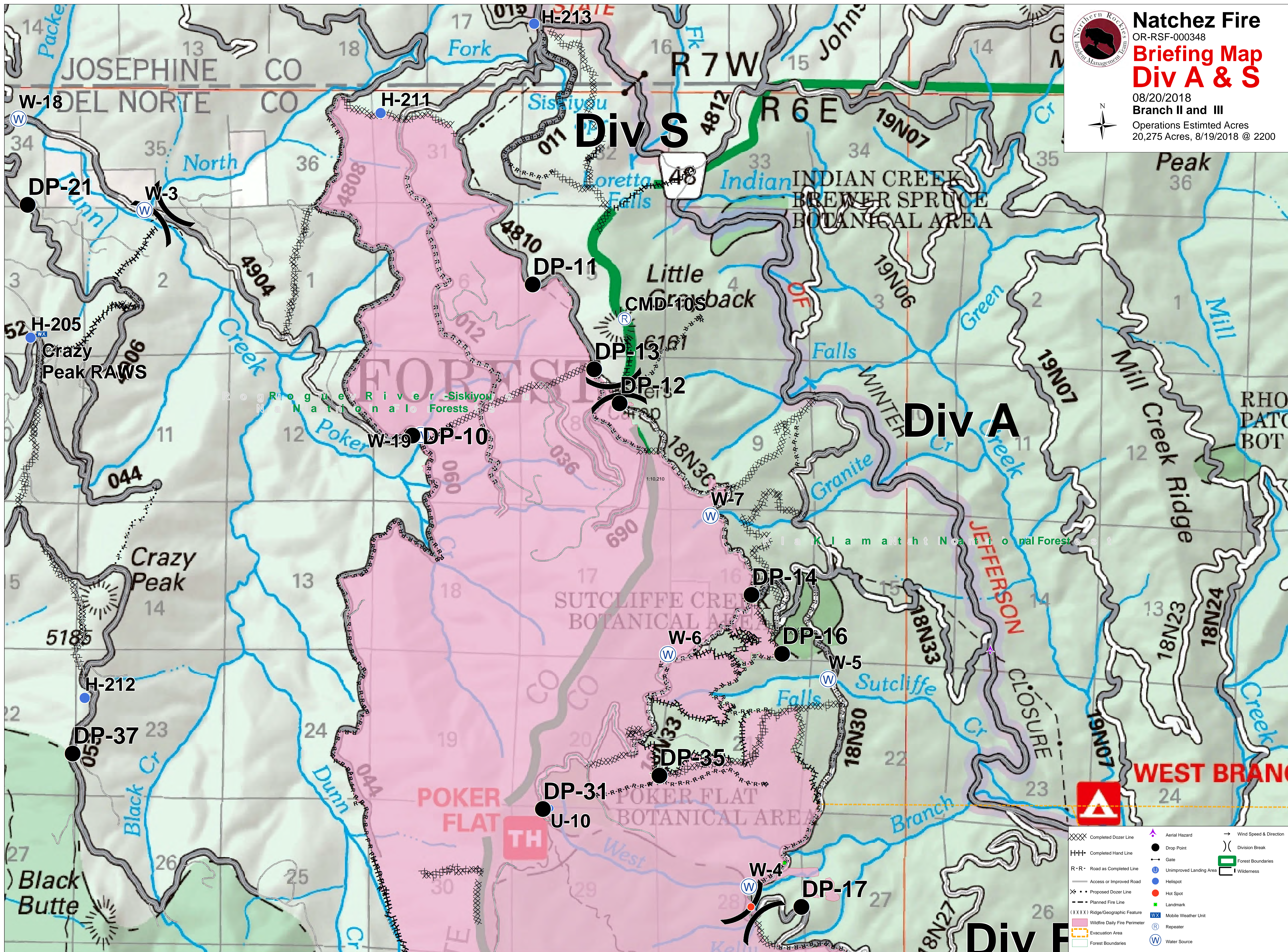
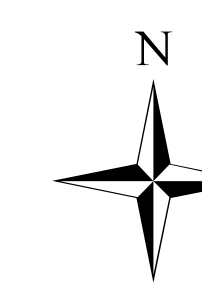
OR-RSF-000348

## Briefing Map Div A & S

08/20/2018

Branch II and III

Operations Estimated Acres  
20,275 Acres, 8/19/2018 @ 2200

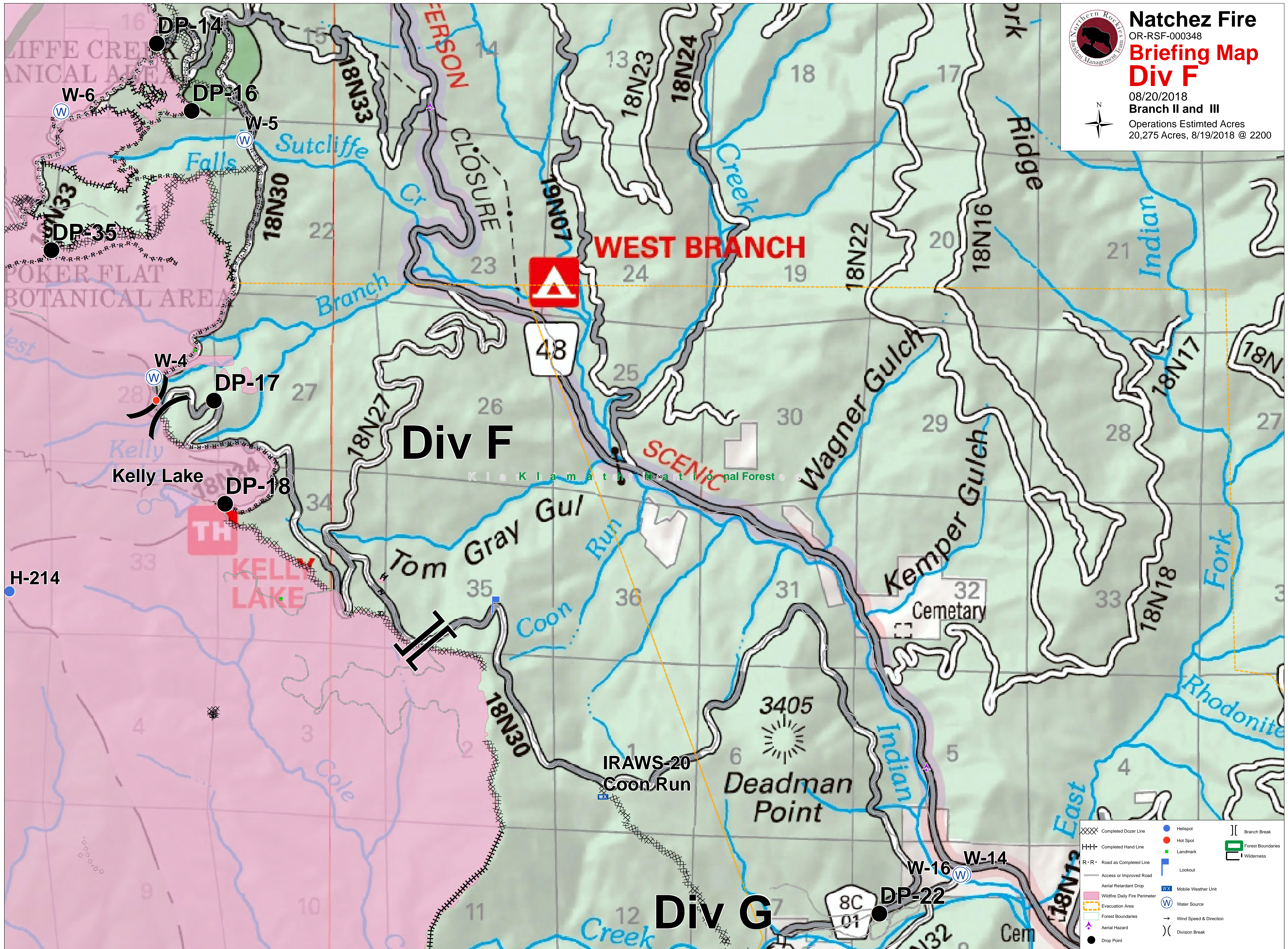
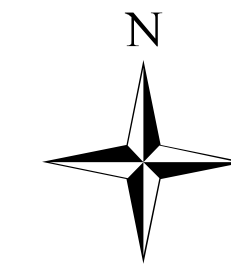


XXXXX	Completed Dozer Line	▲	Aerial Hazard	→	Wind Speed & Direction
HHH	Completed Hand Line	●	Drop Point	))	Division Break
R-R	Road as Completed Line	⬮	Gate	▭	Forest Boundaries
---	Access or Improved Road	●	Unimproved Landing Area	▭	Wilderness
X-X	Proposed Dozer Line	●	Hot Spot		
---	Planned Fire Line	●	Landmark		
XXXX	Ridge/Geographic Feature	⊠	Mobile Weather Unit		
---	Wildfire Daily Fire Perimeter	Ⓡ	Repeater		
---	Evacuation Area	Ⓜ	Water Source		
---	Forest Boundaries				



# Natchez Fire OR-RSF-000348 Briefing Map Div F

08/20/2018  
Branch II and III  
Operations Estimated Acres  
20,275 Acres, 8/19/2018 @ 2200






# Natchez Fire

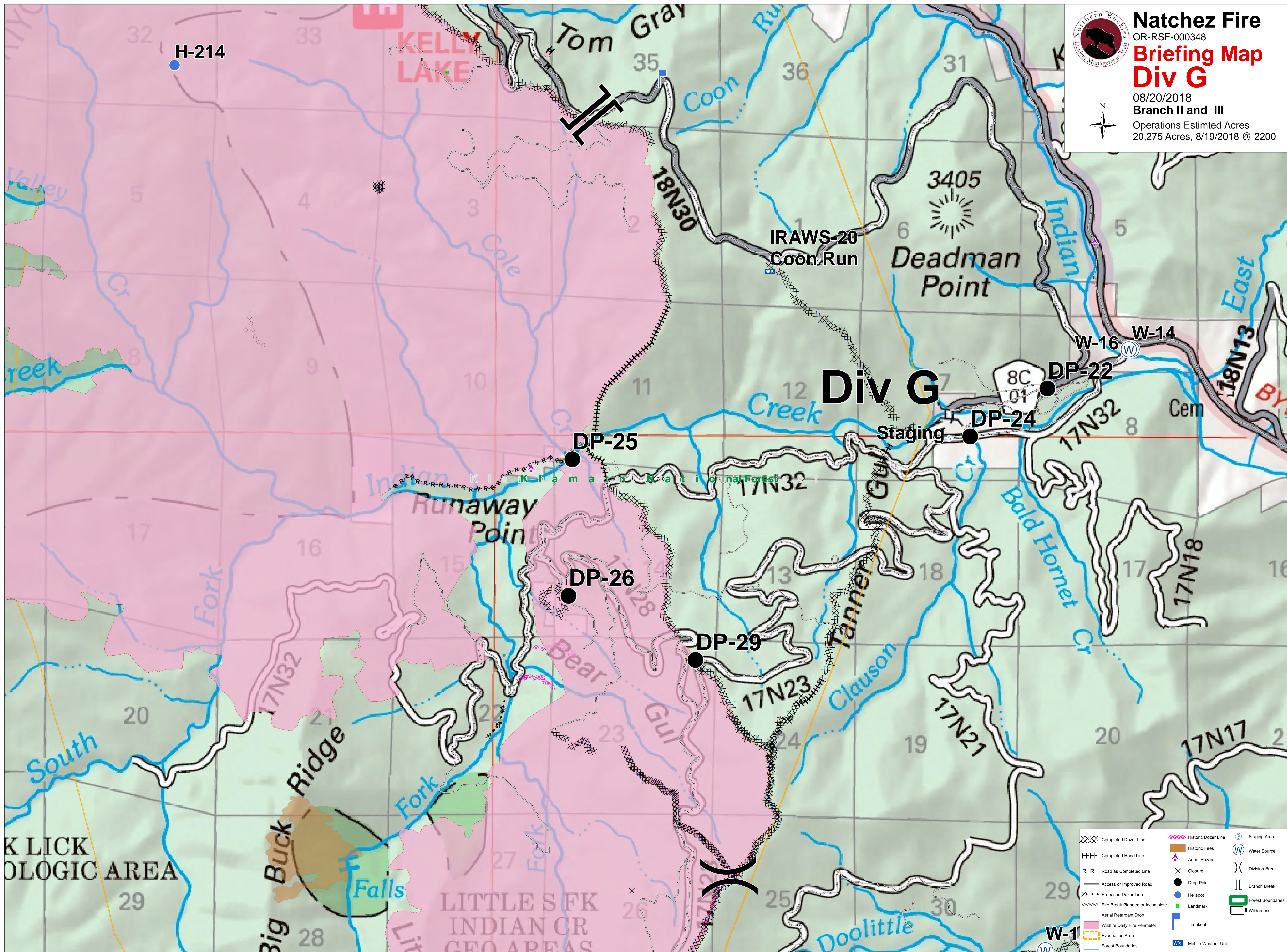
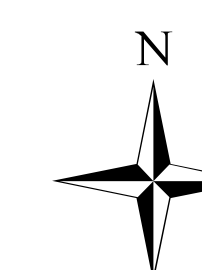
OR-RSF-000348

## Briefing Map Div G

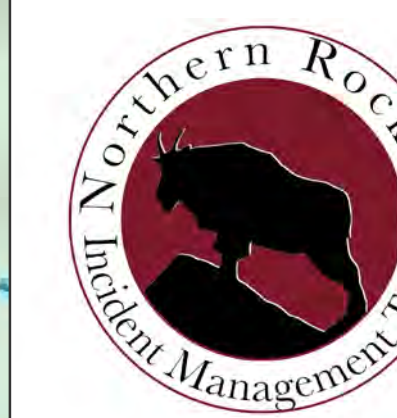
08/20/2018

Branch II and III

Operations Estimated Acres  
20,275 Acres, 8/19/2018 @ 2200

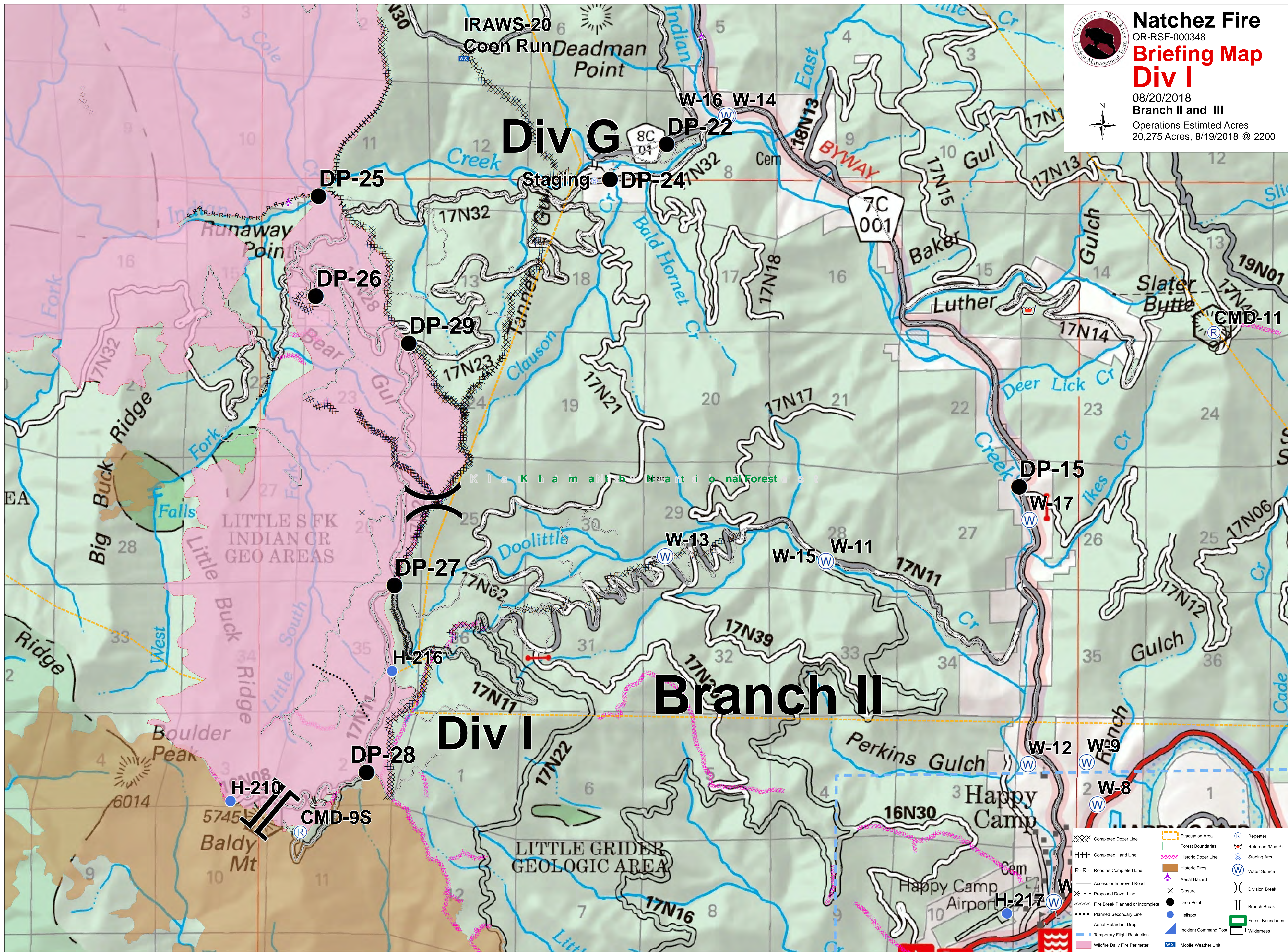
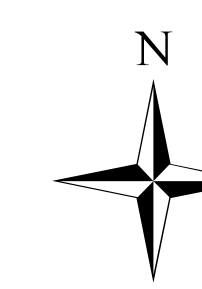


XXXX	Completed Dozer Line	XXXX	Historic Dozer Line	Ⓢ	Staging Area
HHH	Completed Hand Line	■	Historic Fires	Ⓜ	Water Source
R-R	Road as Completed Line	▲	Aerial Hazard	)	Division Break
—	Access or Improved Road	X	Closure		Branch Break
X-X	Proposed Dozer Line	●	Drop Point	Ⓜ	Forest Boundaries
~~~~~	Fire Break Planned or Incomplete	●	Helispot	Ⓜ	Wilderness
⋈	Aerial Retardant Drop	●	Landmark		
Ⓜ	Wildfire Daily Fire Perimeter	Ⓜ	Lookout		
Ⓜ	Evacuation Area	WX	Mobile Weather Unit		
Ⓜ	Forest Boundaries				



**Natchez Fire**  
OR-RSF-000348  
**Briefing Map**  
**Div I**

08/20/2018  
Branch II and III  
Operations Estimated Acres  
20,275 Acres, 8/19/2018 @ 2200



XXXX	Completed Dozer Line	Evacuation Area	Ⓡ	Repeater
HHH	Completed Hand Line	Forest Boundaries	Ⓜ	Retardant/Mud Pit
R-R	Road as Completed Line	Historic Dozer Line	Ⓢ	Staging Area
---	Access or Improved Road	Historic Fires	Ⓜ	Water Source
---	Proposed Dozer Line	Aerial Hazard	Ⓧ	Closure
---	Fire Break Planned or Incomplete	Fire Break Planned or Incomplete	Ⓢ	Division Break
---	Planned Secondary Line	Aerial Retardant Drop	Ⓢ	Branch Break
---	Temporary Flight Restriction	Incident Command Post	Ⓢ	Forest Boundaries
---	Wildfire Daily Fire Perimeter	Mobile Weather Unit	Ⓢ	Wilderness

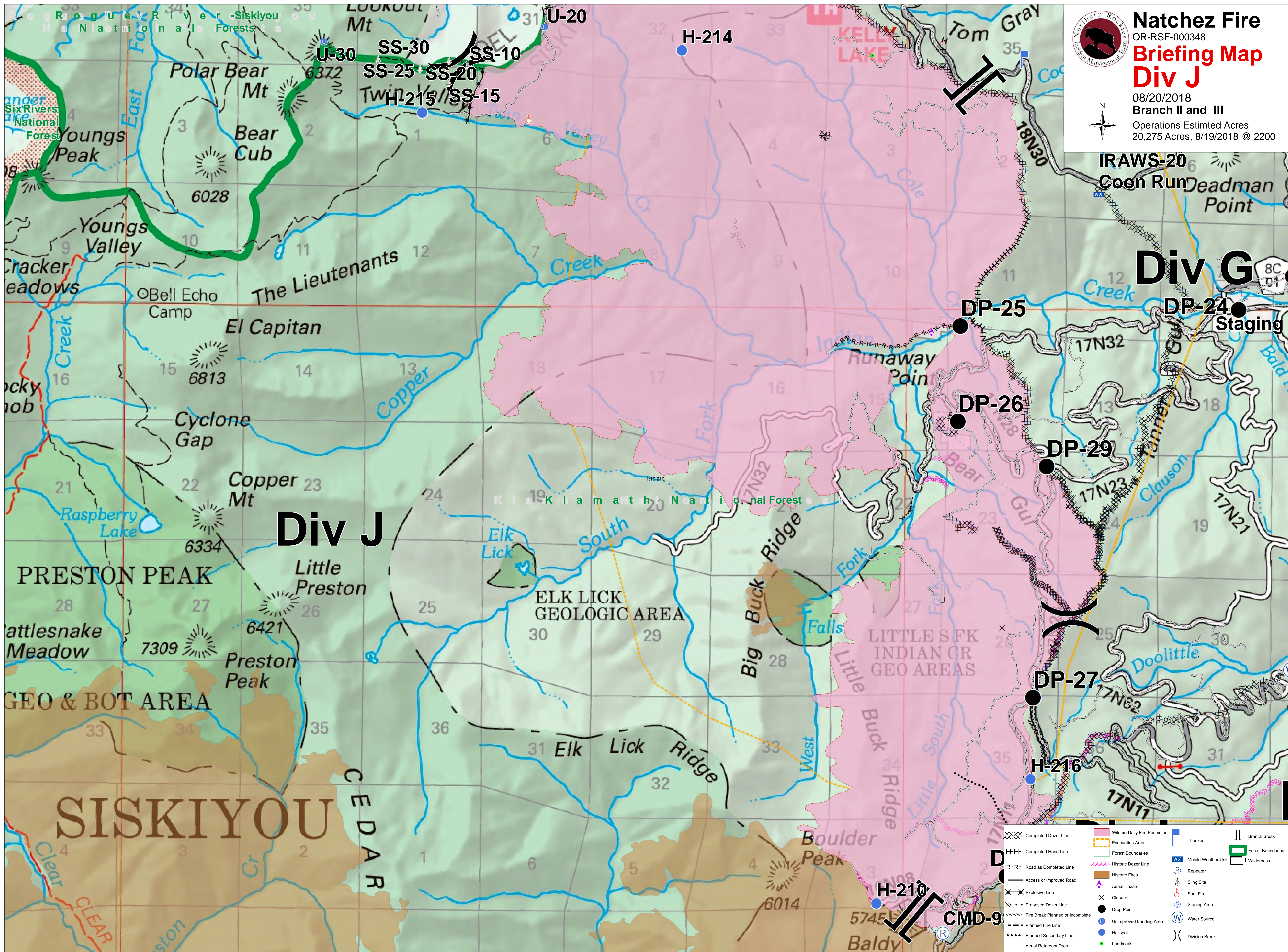
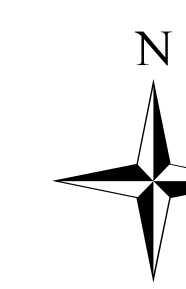


# Natchez Fire

## Briefing Map

### Div J

OR-RSF-000348  
08/20/2018  
Branch II and III  
Operations Estimated Acres  
20,275 Acres, 8/19/2018 @ 2200



## Div J

## Div G

IRAWS-20  
Coon Run  
Deadman Point

DP-25

DP-24  
Staging

DP-26

DP-29

DP-27

H-216

H-210

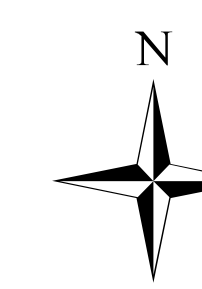
CMD-9

XXXX	Completed Dozer Line	---	Wildfire Daily Fire Perimeter	Ⓛ	Lookout
HHH	Completed Hand Line	---	Evacuation Area	Ⓜ	Mobile Weather Unit
---	Forest Boundaries	---	Historic Dozer Line	Ⓡ	Repeater
---	Historic Dozer Line	---	Historic Fires	Ⓢ	Sling Site
---	Access or Improved Road	---	Aerial Hazard	Ⓣ	Spot Fire
---	Proposed Dozer Line	---	Closure	Ⓤ	Staging Area
---	Explosive Line	---	Drop Point	Ⓦ	Water Source
---	Fire Break Planned or Incomplete	---	Unimproved Landing Area	Ⓧ	Wilderness
---	Planned Fire Line	---	Helispot	Ⓨ	Division Break
---	Planned Secondary Line	---	Landmark		
---	Aerial Retardant Drop				



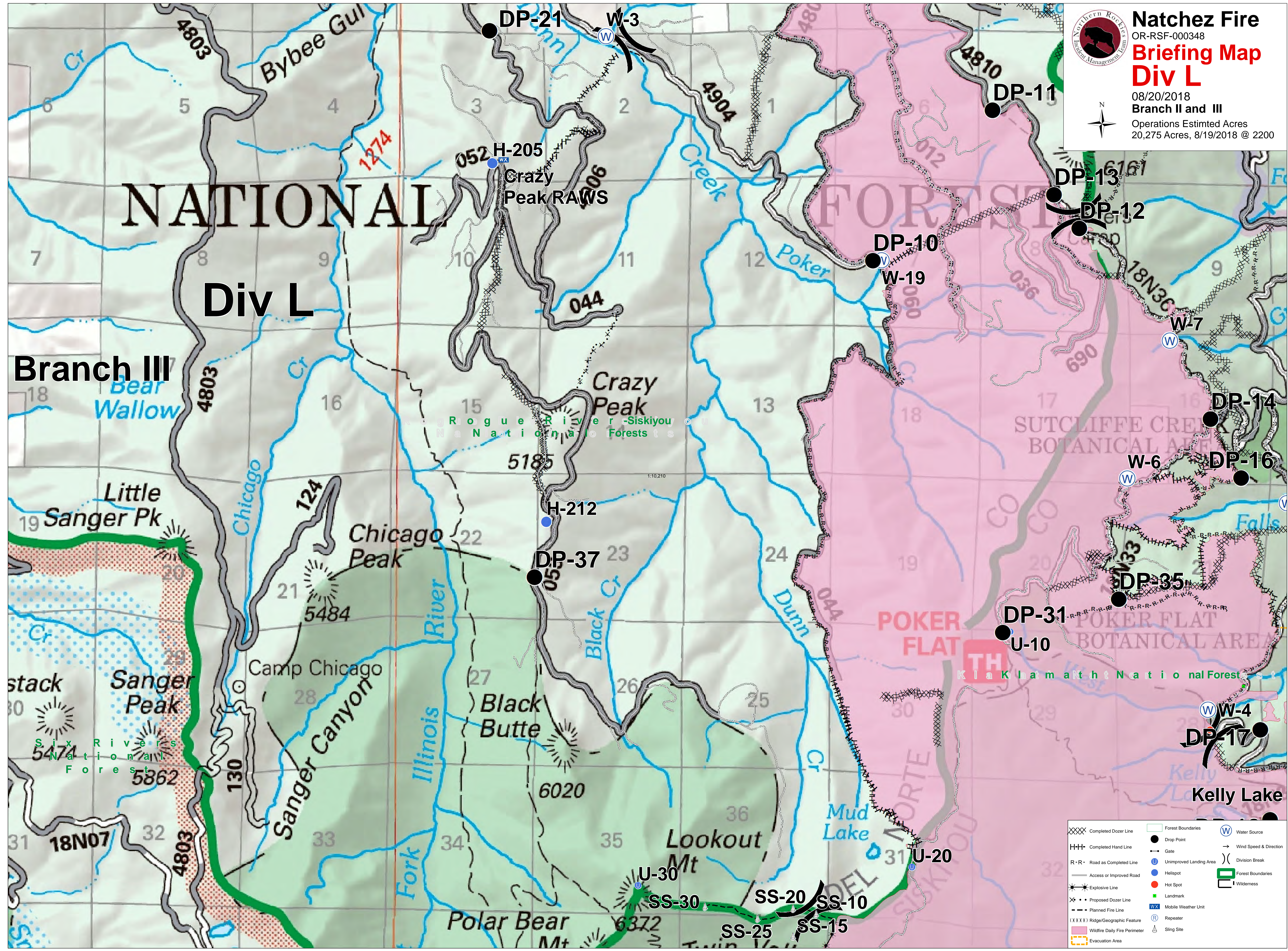
**Natchez Fire**  
OR-RSF-000348  
**Briefing Map**  
**Div L**

08/20/2018  
Branch II and III  
Operations Estimated Acres  
20,275 Acres, 8/19/2018 @ 2200



**NATIONAL**  
**Div L**

**Branch III**



XXXX	Completed Dozer Line	□	Forest Boundaries	W	Water Source
HHH	Completed Hand Line	●	Drop Point	→	Wind Speed & Direction
R-R	Road as Completed Line	—	Gate	)	Division Break
—	Access or Improved Road	●	Unimproved Landing Area	□	Forest Boundaries
*	Explosive Line	●	Hot Spot	□	Wilderness
X	Proposed Dozer Line	■	Landmark		
- - -	Planned Fire Line	W	Mobile Weather Unit		
XXXX	Ridge/Geographic Feature	R	Repeater		
□	Wildfire Daily Fire Perimeter	△	Sling Site		
□	Evacuation Area				

**Natchez Fire**  
 OR-RSF-000348  
**Briefing Map**  
**Div I**  
 08/20/2018  
 Branch II and III  
 Operations Estimated Acres  
 20,275 Acres, 8/19/2018 @ 2200

