

Natchez Fire Pilot Map

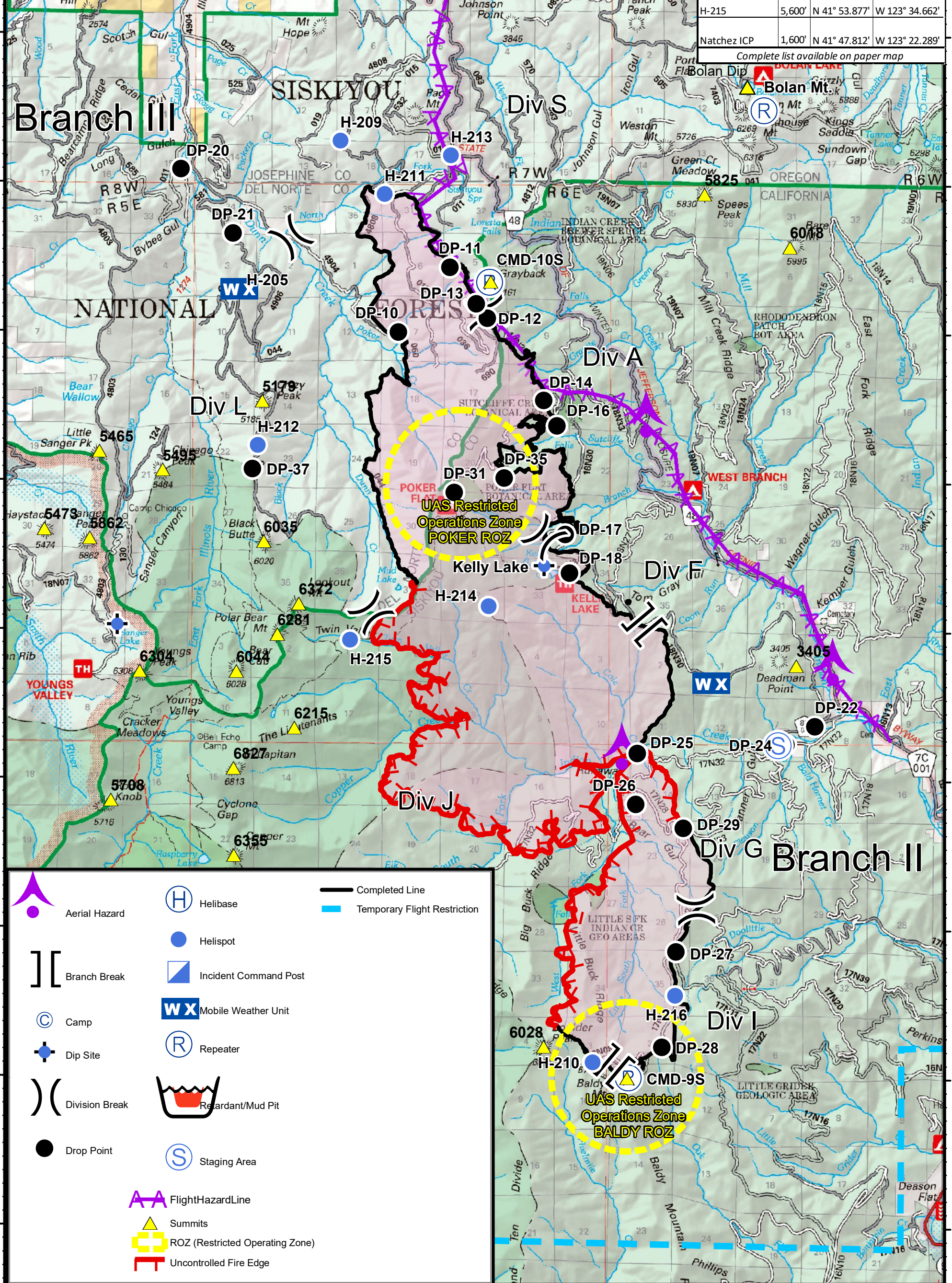
OR-RSF-000348
08/21/2018



0 0.5 1 1.5
Miles

Label	Elev.	Latitude	Longitude
IV Helibase	1,400'	N 42° 06.373'	W 123° 41.029'
HappyCmp HLB	1,200'	N 41° 47.480'	W 123° 23.144'
MRB	2,500'	N 41° 51.615'	W 123° 22.975'
Kelly Lake Dip	4,400'	N 41° 54.880'	W 123° 31.180'
Sanger Lake Dip	5,200'	N 41° 54.064'	W 123° 38.844'
H-213, Snow Park	4,800'	N 42° 00.382'	W 123° 32.908'
H-215	5,600'	N 41° 53.877'	W 123° 34.662'
Natchez ICP	1,600'	N 41° 47.812'	W 123° 22.289'

Complete list available on paper map



	Aerial Hazard		Helibase		Completed Line
	Helispot		Incident Command Post		Temporary Flight Restriction
	Branch Break		Mobile Weather Unit		
	Camp		Repeater		
	Dip Site		Reardant/Mud Pit		
	Division Break		Staging Area		
	Drop Point		Flight Hazard Line		
	Summits		ROZ (Restricted Operating Zone)		
	Uncontrolled Fire Edge				

Feature Category (Point Type)	Label	Comments	Latitude	Longitude
Aerial Hazard		There is nice trailer and pond here - but pond has major cable running over it. This will NOT be used as a dip site - EVER. Please put correct symbology on it!	41° 52.313'	-123° 29.762'
Aerial Hazard		Power line crossing	41° 56.779'	-123° 29.357'
Aerial Hazard		Power line crossing	41° 53.464'	-123° 25.986'
Dip Site	Kelly Lake	4,400'	41° 54.880'	-123° 31.180'
Dip Site		5,200' , Sanger Lake dipsite approved per Klamath NF	41° 54.064'	-123° 38.844'
Helibase		Illinois Valley Airport	42° 6.373'	-123° 41.029'
Helispot	H-209	4,200' , 1 way Type 2	42° 0.607'	-123° 34.901'
Helispot	H-205	3,900'	41° 58.553'	-123° 36.781'
Helispot	H-210	5,200	41° 48.222'	-123° 30.258'
Helispot	H-211	4,300'	41° 59.861'	-123° 34.089'
Helispot	H-212	4,800'	41° 56.479'	-123° 36.344'
Helispot	H-215	5,600' . Approved for type 1, 2, and 3 helicopters	41° 53.877'	-123° 34.662'
Helispot	H-213	4,800' , AOBD approved Type 2 and Type 3.Snow Park paved parking area. Great site for T2 & T3 helo. Needs approval.	42° 0.382'	-123° 32.908'
Helispot	H-216	4,600' , Approved for type 2 helicopters. Helispot is on a road and will need to be confirmed clear of traffic prior to any landings. Will need dust abatement	41° 49.121'	-123° 28.785'
Helispot	H-214	5,200' , Approved for type 2 Helicopter. Will need dust abatement by water drop prior to landing	41° 54.335'	-123° 32.173'
Helispot	H-217	1,200' , Happy Camp Helibase. T2, T3 approved, also rendezvous site for medivac	41° 47.480'	-123° 23.144'
Unimproved Landing Area	U-20	5,000' . Unimproved LZ. Type 3 Helicopter only, HOGE. Dust abatement needed.	41° 54.494'	-123° 33.495'
Unimproved Landing Area	U-10	5,000' , Emergency landing ONLY! Forest doesn't want us to use it. Wet and boggy in the middle of meadow if you have to land for emergency use DON'T land in the middle!	41° 55.861'	-123° 32.746'
Unimproved Landing Area	U-30	6,300' , Nice helispot. No improvement needed.	41° 54.379'	-123° 35.615'
Sling Site	SS-10	5,500 ft	41° 54.219'	-123° 34.235'
Sling Site	SS-15	5,200 ft, 150 long line	41° 54.090'	-123° 34.414'
Sling Site	SS-20	5,600" , Ridgeline/100 longline	41° 54.251'	-123° 34.414'
Sling Site	SS-25	5,600' , Divs J/ Sling Sight 150 ft longline	41° 54.192'	-123° 34.691'
Sling Site	SS-30	5,600' , Divs J Sling Sight/100ft long line	41° 54.259'	-123° 35.096'
Hot Spot			41° 55.050'	-123° 30.663'
Incident Command Post	Natchez ICP		41° 47.812'	-123° 22.289'
Drop Point	DP-10		41° 58.004'	-123° 33.828'
Drop Point	DP-12	A/L Break	41° 58.197'	-123° 32.229'
Drop Point	DP-21		41° 59.319'	-123° 36.812'
Drop Point	DP-13		41° 58.392'	-123° 32.428'
Drop Point	DP-14		41° 57.098'	-123° 31.202'
Drop Point	DP-37		41° 56.158'	-123° 36.434'
Drop Point	DP-31		41° 55.856'	-123° 32.802'
Drop Point	DP-11		41° 58.879'	-123° 32.907'
Drop Point	DP-17		41° 55.247'	-123° 30.914'
Drop Point	DP-18		41° 54.791'	-123° 30.785'
Drop Point	DP-22	intersection o f17N32Rd and south fork. MOVED DP22 IN COLLECTOR TO REFLECT MARKED LOCATION IN FIELD - Branch 2	41° 52.736'	-123° 26.297'
Drop Point	DP-24		41° 52.494'	-123° 26.814'
Drop Point	DP-26		41° 51.683'	-123° 29.505'
Drop Point	DP-28		41° 48.423'	-123° 29.015'
Drop Point	DP-27		41° 49.706'	-123° 28.769'
Drop Point	DP-25		41° 52.368'	-123° 29.485'
Drop Point	DP-35		41° 56.053'	-123° 31.905'
Drop Point	DP-15	Proposed DP by Structure Group Bell at 3521 Hwy48	41° 50.401'	-123° 23.053'
Drop Point	DP-16		41° 56.759'	-123° 30.964'
Drop Point	DP-29	Need a new drop point at this location. DIV G	41° 51.364'	-123° 28.651'
Lookout		View point for spots individual F looking into upper Tom Gray drainage	41° 54.281'	-123° 28.909'
Other		End of two track road, impassible by vehicle from road washout	41° 51.363'	-123° 29.986'
Repeater	CMD-10S		41° 58.684'	-123° 32.195'
Repeater	Bolan Mt.		42° 1.007'	-123° 27.271'
Repeater			42° 1.407'	-123° 15.287'
Repeater	Dutchman Peak		42° 2.608'	-122° 53.470'
Repeater	Mt. Ashland		42° 4.841'	-122° 43.019'
Repeater	CMD-9S		41° 48.012'	-123° 29.619'
Repeater	CMD-11		41° 51.465'	-123° 21.275'
Retardant/Mud Pit			41° 51.615'	-123° 22.975'
Spot Fire			41° 53.825'	-123° 33.644'
Staging Area		Staging area for utv trailers, etc as requested by structure group	41° 52.485'	-123° 26.955'