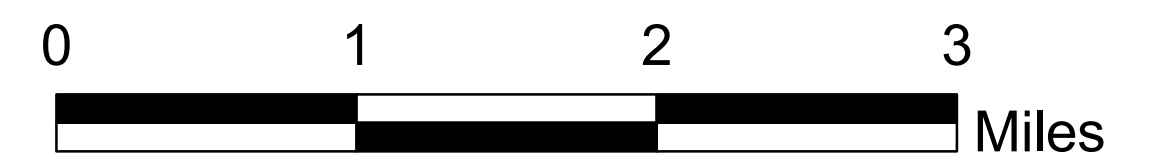


# Natchez Fires

OR-RSF-000348

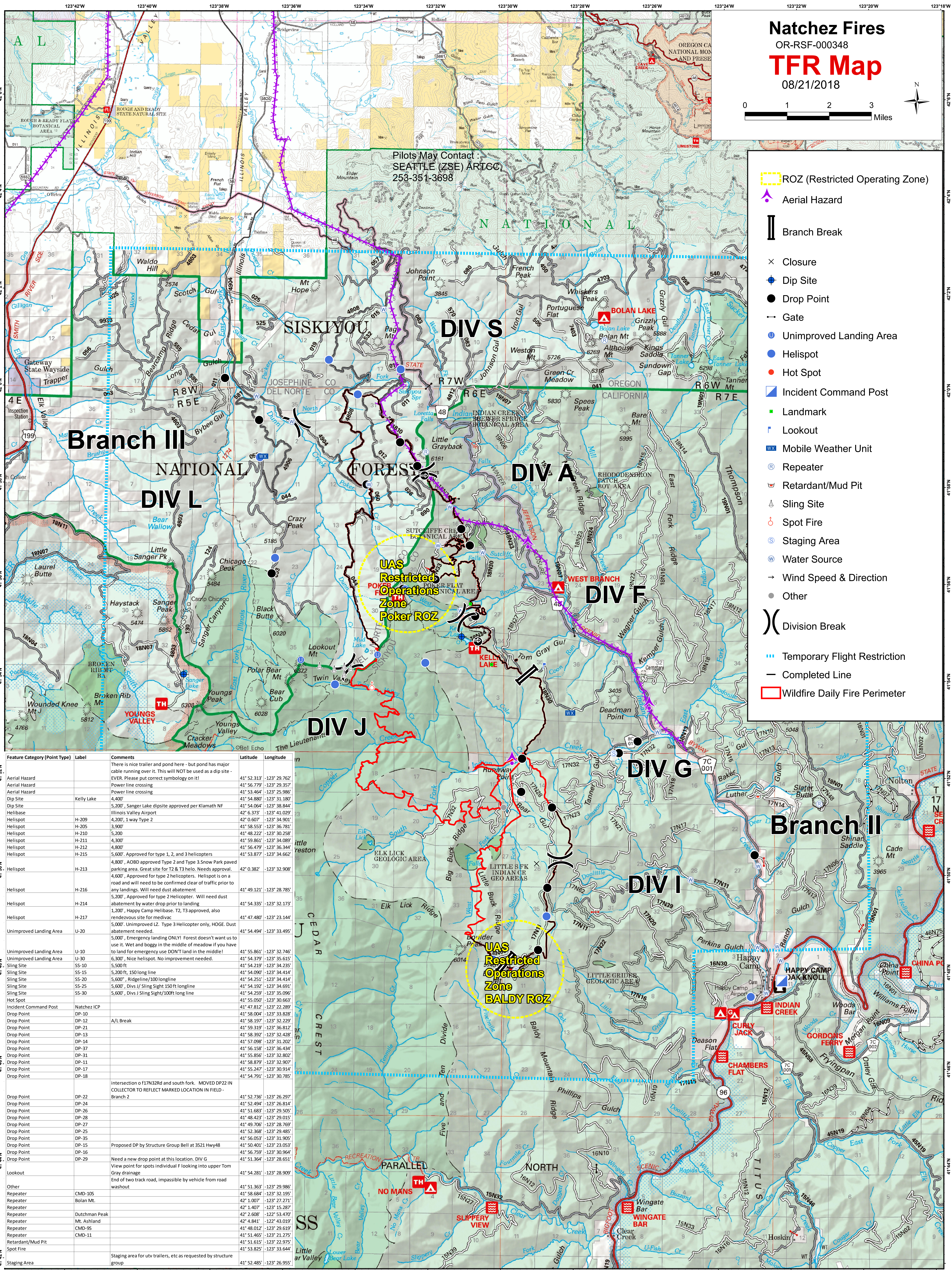
## TFR Map

08/21/2018



Pilots May Contact:  
SEATTLE (ZSE) ARTCC  
253-351-3698

- ROZ (Restricted Operating Zone)
- Aerial Hazard
- Branch Break
- Closure
- Dip Site
- Drop Point
- Gate
- Unimproved Landing Area
- Helispot
- Hot Spot
- Incident Command Post
- Landmark
- Lookout
- Mobile Weather Unit
- Repeater
- Retardant/Mud Pit
- Sling Site
- Spot Fire
- Staging Area
- Water Source
- Wind Speed & Direction
- Other
- Division Break
- Temporary Flight Restriction
- Completed Line
- Wildfire Daily Fire Perimeter



Feature Category (Point Type)	Label	Comments	Latitude	Longitude
Aerial Hazard		There is nice trailer and pond here - but pond has major cable running over it. This will NOT be used as a dip site - EVER. Please put correct symbology on it!	41° 52' 31.3"	-123° 29' 7.62"
Aerial Hazard		Power line crossing	41° 56' 7.79"	-123° 29' 35.7"
Aerial Hazard		Power line crossing	41° 53' 4.64"	-123° 25' 98.6"
Dip Site	Kelly Lake	4,400'	41° 54' 8.80"	-123° 31' 18.0"
Dip Site		5,200', Sanger Lake dip site approved per Klamath NF	41° 54' 0.64"	-123° 38' 84.4"
Helibase		Illinois Valley Airport	42° 6' 3.73"	-123° 41' 02.9"
Helispot	H-209	4,200', 1 way Type 2	42° 0' 6.07"	-123° 34' 90.1"
Helispot	H-205	3,900'	41° 58' 5.53"	-123° 36' 78.1"
Helispot	H-210	5,200'	41° 48' 2.22"	-123° 30' 25.8"
Helispot	H-211	4,300'	41° 59' 8.61"	-123° 34' 08.9"
Helispot	H-212	4,800'	41° 56' 4.79"	-123° 36' 34.4"
Helispot	H-215	5,600'. Approved for type 1, 2, and 3 helicopters	41° 53' 8.77"	-123° 34' 6.62"
Helispot	H-213	4,800', AOB approved Type 2 and Type 3. Snow Park paved parking area. Great site for T2 & T3 helo. Needs approval. 4,600', Approved for type 2 helicopters. Helispot is on a road and will need to be confirmed clear of traffic prior to any landings. Will need dust abatement	42° 0' 3.82"	-123° 32' 90.8"
Helispot	H-216	5,200', Approved for type 2 Helicopter. Will need dust abatement by water drop prior to landing	41° 49' 1.21"	-123° 28' 78.5"
Helispot	H-214	1,200', Happy Camp Helibase. T2, T3 approved, also rendezvous site for medivac	41° 54' 3.35"	-123° 32' 17.3"
Helispot	H-217	5,000'. Unimproved LZ. Type 3 Helicopter only, HOGE. Dust abatement needed.	41° 47' 4.80"	-123° 33' 14.4"
Unimproved Landing Area	U-20	5,000'. Emergency landing ONLY! Forest doesn't want us to use it. Wet and boggy in the middle of meadow if you have to land for emergency use DON'T land in the middle!	41° 54' 4.94"	-123° 33' 49.5"
Unimproved Landing Area	U-10	6,300', Nice helispot. No improvement needed.	41° 55' 8.61"	-123° 32' 74.6"
Sling Site	SS-10	5,500 ft	41° 54' 3.79"	-123° 35' 61.5"
Sling Site	SS-15	5,200 ft, 150 ft long line	41° 54' 2.19"	-123° 34' 23.5"
Sling Site	SS-20	5,600', Divs J/ Sling Sight 150 ft longline	41° 54' 0.90"	-123° 34' 41.4"
Sling Site	SS-25	5,600', Divs J/ Sling Sight 150 ft longline	41° 54' 2.51"	-123° 34' 41.4"
Sling Site	SS-30	5,600', Divs J Sling Sight/100ft long line	41° 54' 1.92"	-123° 34' 6.91"
Hot Spot		5,600', Divs J Sling Sight/100ft long line	41° 54' 2.59"	-123° 35' 09.6"
Incident Command Post	Natchez ICP		41° 55' 0.50"	-123° 30' 6.63"
Drop Point	DP-10		41° 47' 8.12"	-123° 27' 2.89"
Drop Point	DP-12	A/L Break	41° 58' 0.04"	-123° 33' 8.28"
Drop Point	DP-13		41° 58' 1.97"	-123° 32' 2.29"
Drop Point	DP-14		41° 59' 3.19"	-123° 36' 8.12"
Drop Point	DP-15		41° 58' 3.92"	-123° 32' 4.28"
Drop Point	DP-16		41° 57' 0.98"	-123° 31' 20.2"
Drop Point	DP-17		41° 56' 1.58"	-123° 36' 4.34"
Drop Point	DP-18		41° 55' 8.56"	-123° 32' 8.02"
Drop Point	DP-19		41° 58' 8.79"	-123° 32' 90.7"
Drop Point	DP-20		41° 55' 2.47"	-123° 30' 91.4"
Drop Point	DP-21		41° 54' 7.91"	-123° 30' 78.5"
Drop Point	DP-22	intersection of f17N32Rd and south fork. MOVED DP22 IN COLLECTOR TO REFLECT MARKED LOCATION IN FIELD - Branch 2	41° 52' 7.36"	-123° 26' 29.7"
Drop Point	DP-24		41° 52' 4.94"	-123° 26' 81.4"
Drop Point	DP-26		41° 51' 6.83"	-123° 29' 50.5"
Drop Point	DP-28		41° 48' 4.23"	-123° 29' 01.5"
Drop Point	DP-27		41° 49' 7.06"	-123° 28' 7.69"
Drop Point	DP-25		41° 52' 3.68"	-123° 29' 48.5"
Drop Point	DP-35		41° 56' 0.53"	-123° 31' 90.5"
Drop Point	DP-15	Proposed DP by Structure Group Bell at 3521 Hwy48	41° 50' 40.1"	-123° 23' 05.3"
Drop Point	DP-16		41° 56' 7.59"	-123° 30' 96.4"
Drop Point	DP-29	View a new drop point at this location. DIV G	41° 51' 3.64"	-123° 28' 65.1"
Lookout		Need point for spots individual F looking into upper Tom Gray drainage	41° 54' 2.81"	-123° 28' 90.9"
Other		End of two track road, impassible by vehicle from road washout	41° 51' 3.63"	-123° 29' 98.6"
Repeater	CMD-105		41° 58' 6.84"	-123° 32' 19.5"
Repeater	Bolan Mt.		42° 1' 0.07"	-123° 27' 27.1"
Repeater	Dutchman Peak		42° 1' 4.07"	-123° 15' 28.7"
Repeater	Mt. Ashland		42° 2' 6.08"	-123° 53' 47.0"
Repeater	CMD-95		42° 4' 8.41"	-123° 43' 01.9"
Repeater	CMD-11		41° 48' 0.12"	-123° 29' 61.9"
Retardant/Mud Pit	CMD-11		41° 51' 4.65"	-123° 21' 2.75"
Spot Fire			41° 51' 6.15"	-123° 22' 97.5"
Staging Area		Staging area for utv trailers, etc as requested by structure group	41° 53' 8.25"	-123° 33' 64.4"
Staging Area			41° 52' 4.85"	-123° 26' 95.5"