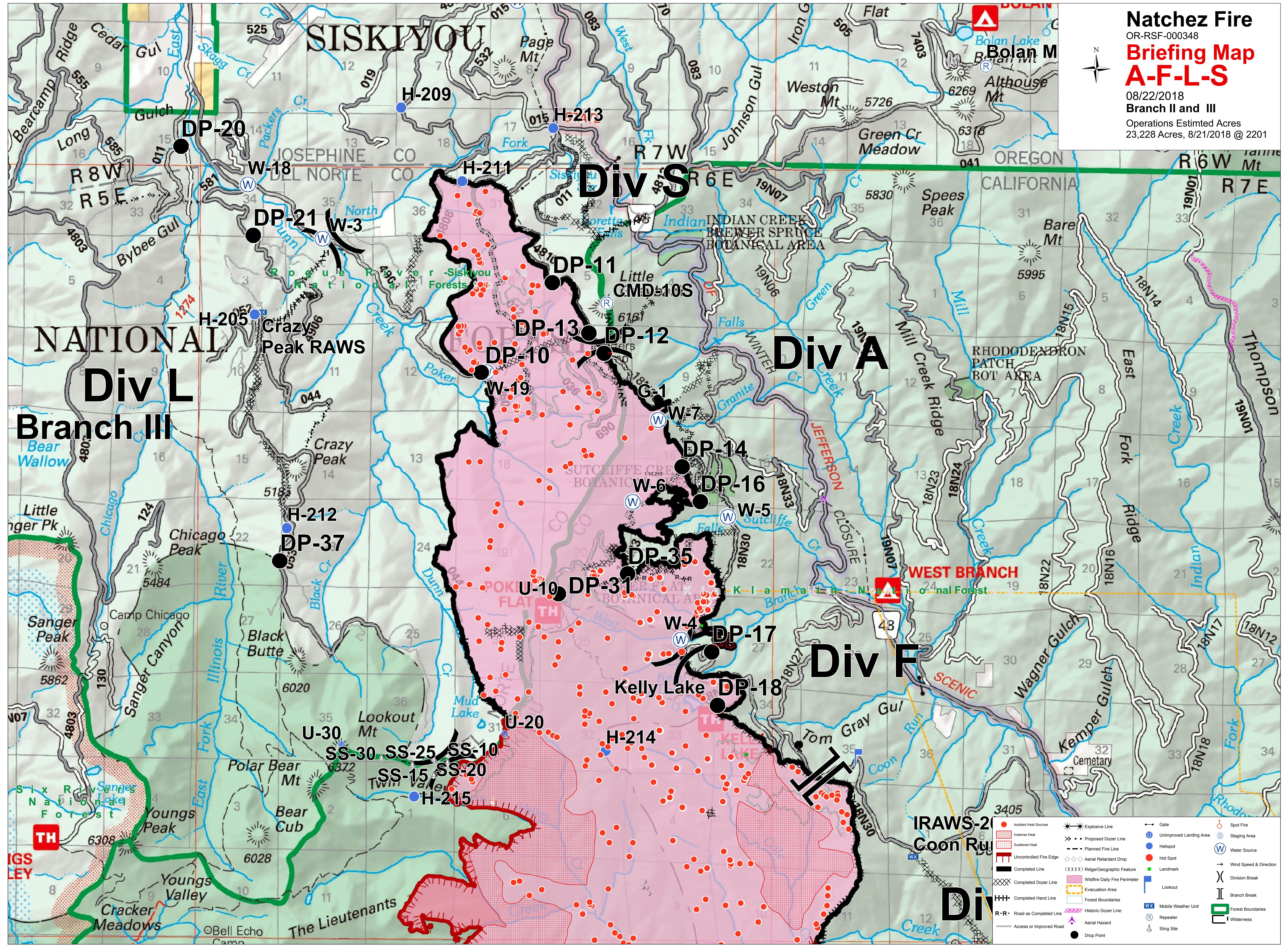
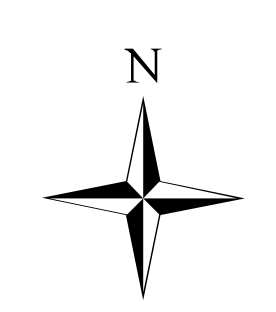


Natchez Fire
 OR-RSF-000348
Briefing Map
A-F-L-S
 08/22/2018
 Branch II and III
 Operations Estimated Acres
 23,228 Acres, 8/21/2018 @ 2201



| | | | |
|----------------------------|-------------------------------|-------------------------|------------------------|
| Isolated Heat Sources | Explosive Line | Gate | Spot Fire |
| Intense Heat | Proposed Dozer Line | Unimproved Landing Area | Staging Area |
| Scattered Heat | Planned Fire Line | Helispot | Water Source |
| Uncontrolled Fire Edge | Aerial Retardant Drop | Hot Spot | Wind Speed & Direction |
| Completed Line | Ridge/Geographic Feature | Lookout | Wilderness |
| Completed Dozer Line | Wildfire Daily Fire Perimeter | Mobile Weather Unit | Repeater |
| Completed Hand Line | Evacuation Area | Sling Site | |
| R-R Road as Completed Line | Forest Boundaries | Division Break | |
| Access or Improved Road | Historic Dozer Line | Branch Break | |
| | Aerial Hazard | Forest Boundaries | |
| | Drop Point | Wilderness | |