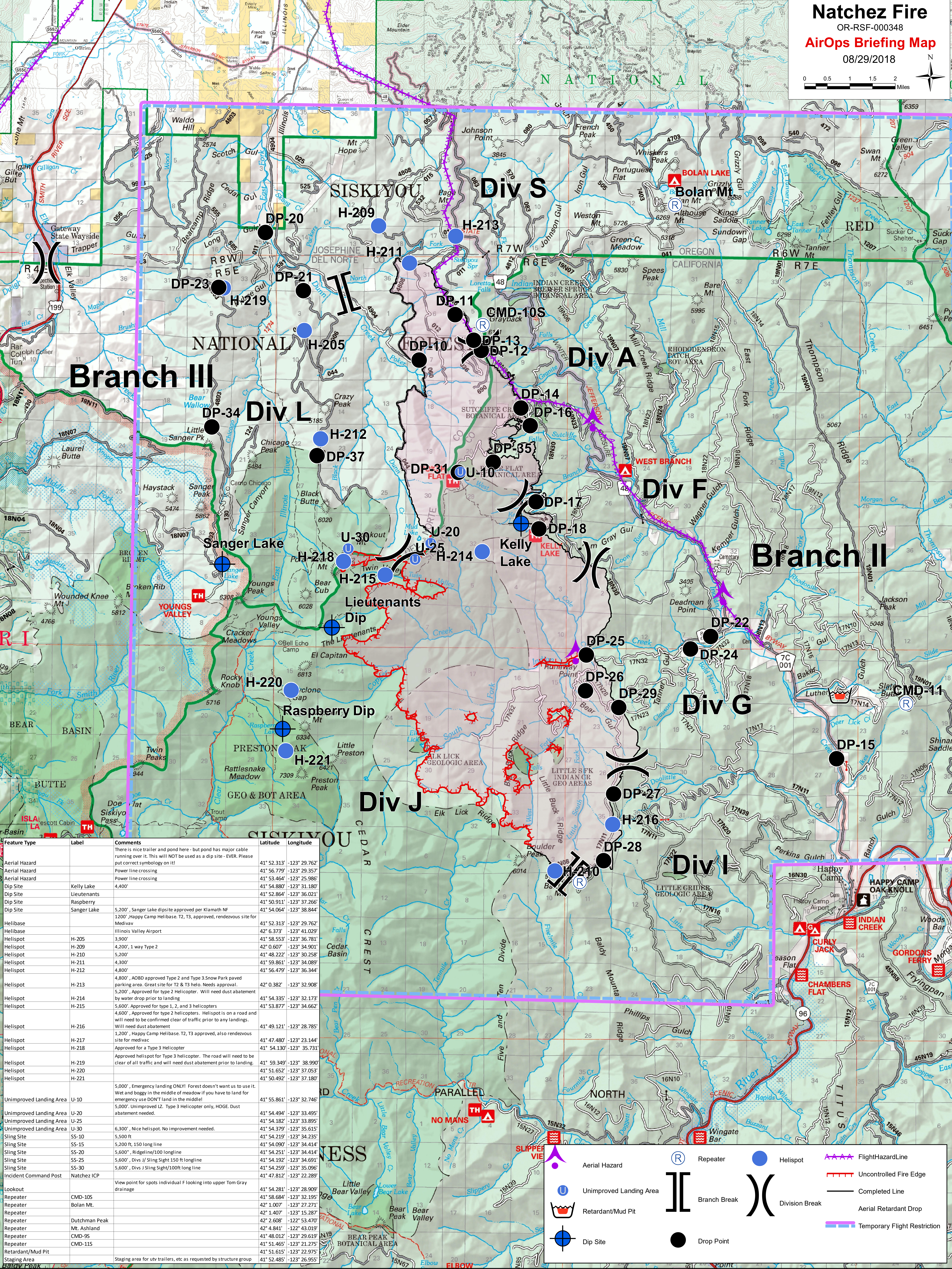
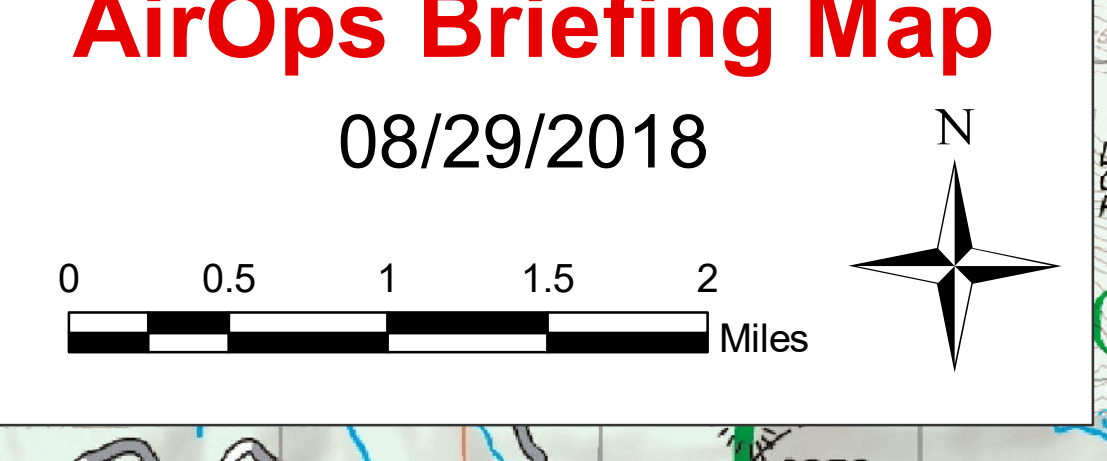


# Natchez Fire

OR-RSF-000348

## AirOps Briefing Map

08/29/2018



Feature Type	Label	Comments	Latitude	Longitude
Aerial Hazard		There is nice trailer and pond here - but pond has major cable running over it. This will NOT be used as a dip site - EVER. Please put correct symbology on it!	41° 52.313'	-123° 29.762'
Aerial Hazard		Power line crossing	41° 56.779'	-123° 29.357'
Aerial Hazard		Power line crossing	41° 53.464'	-123° 25.986'
Dip Site	Kelly Lake	4,400'	41° 54.880'	-123° 31.180'
Dip Site	Lieutenants		41° 52.864'	-123° 36.021'
Dip Site	Raspberry		41° 50.911'	-123° 37.266'
Dip Site	Sanger Lake	5,200' , Sanger Lake dipsite approved per Klamath NF	41° 54.064'	-123° 38.844'
Helibase		1200' , Happy Camp Helibase. T2, T3 approved, rendezvous site for Medivac	41° 52.313'	-123° 29.762'
Helibase		Illinois Valley Airport	42° 6.373'	-123° 41.029'
Helispot	H-205	3,900'	41° 58.553'	-123° 36.781'
Helispot	H-209	4,200' , 1 way Type 2	42° 0.607'	-123° 34.901'
Helispot	H-210	5,200'	41° 48.222'	-123° 30.258'
Helispot	H-211	4,300'	41° 59.861'	-123° 34.089'
Helispot	H-212	4,800'	41° 56.479'	-123° 36.344'
Helispot	H-213	4,800' , AOB approved Type 2 and Type 3. Snow Park paved parking area. Great site for T2 & T3 helo. Needs approval.	42° 0.382'	-123° 32.908'
Helispot	H-214	5,200' , Approved for type 2 Helicopter. Will need dust abatement by water drop prior to landing	41° 54.335'	-123° 32.173'
Helispot	H-215	5,600' , Approved for type 2 Helicopters. Helispot is on a road and will need to be confirmed clear of traffic prior to any landings. Will need dust abatement	41° 53.877'	-123° 34.662'
Helispot	H-216	1,200' , Happy Camp Helibase. T2, T3 approved, also rendezvous site for medivac	41° 49.121'	-123° 28.785'
Helispot	H-217	4,100' , Approved for a Type 3 Helicopter	41° 47.480'	-123° 23.144'
Helispot	H-218	Approved for a Type 3 Helicopter	41° 54.130'	-123° 35.731'
Helispot	H-219	Approved helispot for Type 3 helicopter. The road will need to be clear of all traffic and will need dust abatement prior to landing.	41° 59.349'	-123° 38.990'
Helispot	H-220	4,600' , Emergency landing ONLY! Forest doesn't want us to use it. Wet and boggy in the middle of meadow if you have to land for emergency use. DON'T land in the middle!	41° 51.652'	-123° 37.053'
Helispot	H-221	5,000' , Unimproved LZ. Type 3 Helicopter only, HOGG. Dust abatement needed.	41° 50.492'	-123° 37.180'
Unimproved Landing Area	U-10	5,000' , Emergency landing ONLY! Forest doesn't want us to use it. Wet and boggy in the middle of meadow if you have to land for emergency use. DON'T land in the middle!	41° 55.861'	-123° 32.746'
Unimproved Landing Area	U-20	6,300' , Nice helispot. No improvement needed.	41° 54.494'	-123° 33.495'
Unimproved Landing Area	U-25	5,000'	41° 54.182'	-123° 33.895'
Unimproved Landing Area	U-30	6,300' , Nice helispot. No improvement needed.	41° 54.379'	-123° 35.615'
Sling Site	SS-10	5,500 ft	41° 54.219'	-123° 34.235'
Sling Site	SS-15	5,200 ft, 150 long line	41° 54.090'	-123° 34.414'
Sling Site	SS-20	5,600' , Ridgeline/100 longline	41° 54.251'	-123° 34.414'
Sling Site	SS-25	5,600' , Divs 1/ Sling Sight 150 ft longline	41° 54.192'	-123° 34.691'
Sling Site	SS-30	5,600' , Divs 1/ Sling Sight/100ft long line	41° 54.259'	-123° 35.096'
Incident Command Post	Natchez ICP		41° 47.812'	-123° 22.289'
Lookout		View point for spots individual F looking into upper Tom Gray drainage	41° 54.281'	-123° 28.909'
Repeater	CMD-10S		41° 58.684'	-123° 32.195'
Repeater	Bolan Mt.		42° 1.007'	-123° 27.271'
Repeater			42° 1.407'	-123° 15.287'
Repeater	Dutchman Peak		42° 2.608'	-122° 53.470'
Repeater	Mt. Ashland		42° 4.841'	-122° 43.019'
Repeater	CMD-9S		41° 48.012'	-123° 29.619'
Repeater	CMD-11S		41° 51.465'	-123° 21.275'
Retardant/Mud Pit			41° 51.615'	-123° 22.975'
Staging Area		Staging area for utv trailers, etc as requested by structure group	41° 52.485'	-123° 26.955'

- Aerial Hazard
- Unimproved Landing Area
- Retardant/Mud Pit
- Dip Site
- Repeater
- Branch Break
- Division Break
- Helispot
- Drop Point
- Flight Hazard Line
- Uncontrolled Fire Edge
- Completed Line
- Aerial Retardant Drop
- Temporary Flight Restriction