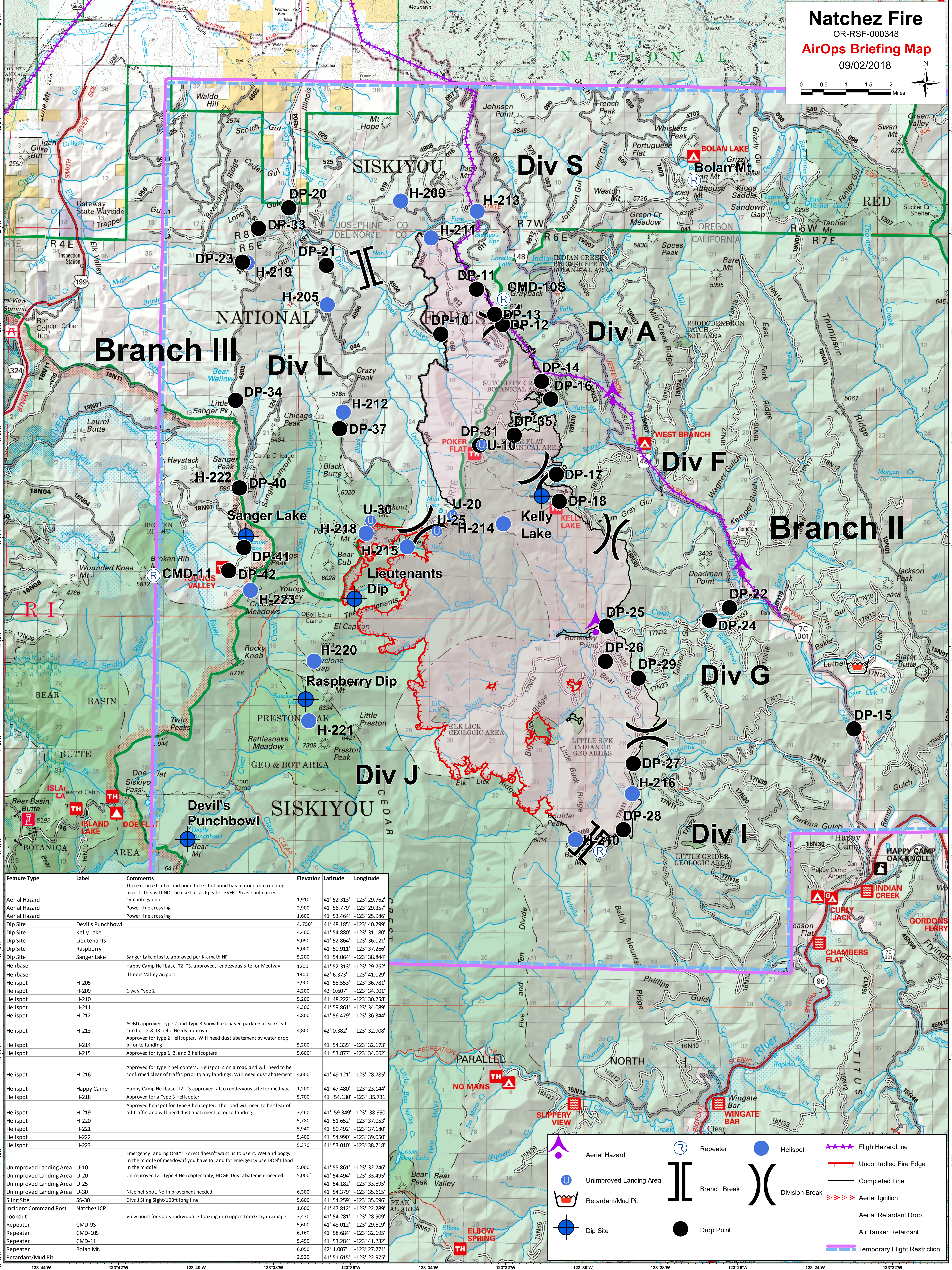
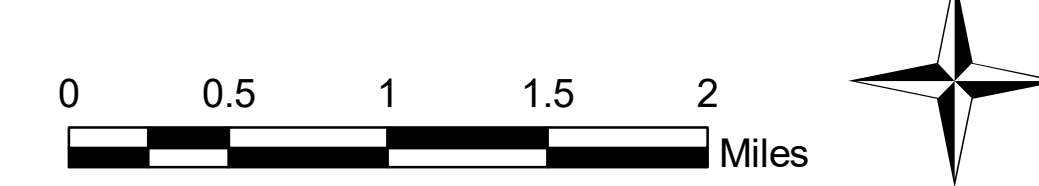


Natchez Fire

OR-RSF-000348

AirOps Briefing Map

09/02/2018



Feature Type	Label	Comments	Elevation	Latitude	Longitude
Aerial Hazard		There is nice trailer and pond here - but pond has major cable running over it. This will NOT be used as a dip site - EVER. Please put correct symbology on it!	1,910'	41° 52.313'	-123° 29.762'
Aerial Hazard		Power line crossing	2,900'	41° 56.779'	-123° 29.357'
Aerial Hazard		Power line crossing	1,600'	41° 53.464'	-123° 25.986'
Dip Site	Devil's Punchbowl		4,750'	41° 48.185'	-123° 40.299'
Dip Site	Kelly Lake		4,400'	41° 54.880'	-123° 31.180'
Dip Site	Lieutenants		5,090'	41° 52.864'	-123° 36.021'
Dip Site	Raspberry		5,000'	41° 50.911'	-123° 37.266'
Dip Site	Sanger Lake		5,200'	41° 54.064'	-123° 38.844'
Helibase		Happy Camp Helibase. T2, T3, approved, rendezvous site for Medivac	1,200'	41° 52.313'	-123° 29.762'
Helibase		Illinois Valley Airport	1,400'	42° 6.373'	-123° 41.029'
Helispot	H-205	1 way Type 2	3,900'	41° 58.553'	-123° 36.781'
Helispot	H-209		4,200'	42° 0.607'	-123° 34.901'
Helispot	H-210		5,200'	41° 48.222'	-123° 30.258'
Helispot	H-211		4,300'	41° 59.861'	-123° 34.089'
Helispot	H-212		4,800'	41° 56.479'	-123° 36.344'
Helispot	H-213		4,800'	42° 0.382'	-123° 32.908'
Helispot	H-214		5,200'	41° 54.335'	-123° 32.173'
Helispot	H-215		5,600'	41° 53.877'	-123° 34.662'
Helispot	H-216	Approved for type 2 helicopters. Helispot is on a road and will need to be confirmed clear of traffic prior to any landings. Will need dust abatement	4,600'	41° 49.121'	-123° 28.785'
Helispot	Happy Camp	Happy Camp Helibase. T2, T3 approved, also rendezvous site for medivac	1,200'	41° 47.480'	-123° 23.144'
Helispot	H-218	Approved for a Type 3 Helicopter	5,700'	41° 54.130'	-123° 35.731'
Helispot	H-219		3,460'	41° 59.349'	-123° 38.990'
Helispot	H-220		5,780'	41° 51.652'	-123° 37.053'
Helispot	H-221		5,940'	41° 50.492'	-123° 37.180'
Helispot	H-222		5,400'	41° 54.990'	-123° 39.050'
Helispot	H-223		5,370'	41° 53.010'	-123° 38.718'
Unimproved Landing Area	U-10	Emergency landing ONLY! Forest doesn't want us to use it. Wet and boggy in the middle of meadow if you have to land for emergency use DON'T land in the middle!	5,000'	41° 55.861'	-123° 32.746'
Unimproved Landing Area	U-20	Unimproved LZ. Type 3 Helicopter only, HOGS. Dust abatement needed.	5,000'	41° 54.494'	-123° 33.495'
Unimproved Landing Area	U-25		6,300'	41° 54.182'	-123° 33.895'
Unimproved Landing Area	U-30	Nice helispot. No improvement needed.	6,300'	41° 54.379'	-123° 35.615'
Sling Site	SS-30	Divs J Sling Sight/100ft long line	5,600'	41° 54.259'	-123° 35.096'
Incident Command Post	Natchez ICP		1,600'	41° 47.812'	-123° 22.289'
Lookout		View point for spots individual F looking into upper Tom Gray drainage	3,470'	41° 54.281'	-123° 28.909'
Repeater	CMD-9S		5,600'	41° 48.012'	-123° 29.619'
Repeater	CMD-10S		6,160'	41° 58.684'	-123° 32.195'
Repeater	CMD-11		5,490'	41° 53.284'	-123° 41.232'
Repeater	Bolan Mt.		6,050'	42° 1.007'	-123° 27.271'
Retardant/Mud Pit			2,520'	41° 51.615'	-123° 22.975'