

123°40'W

123°38'W

123°36'W

123°34'W

123°32'W

123°30'W

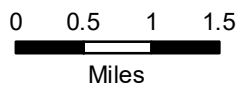
123°28'W

123°26'W

Natchez Fire Pilot Map

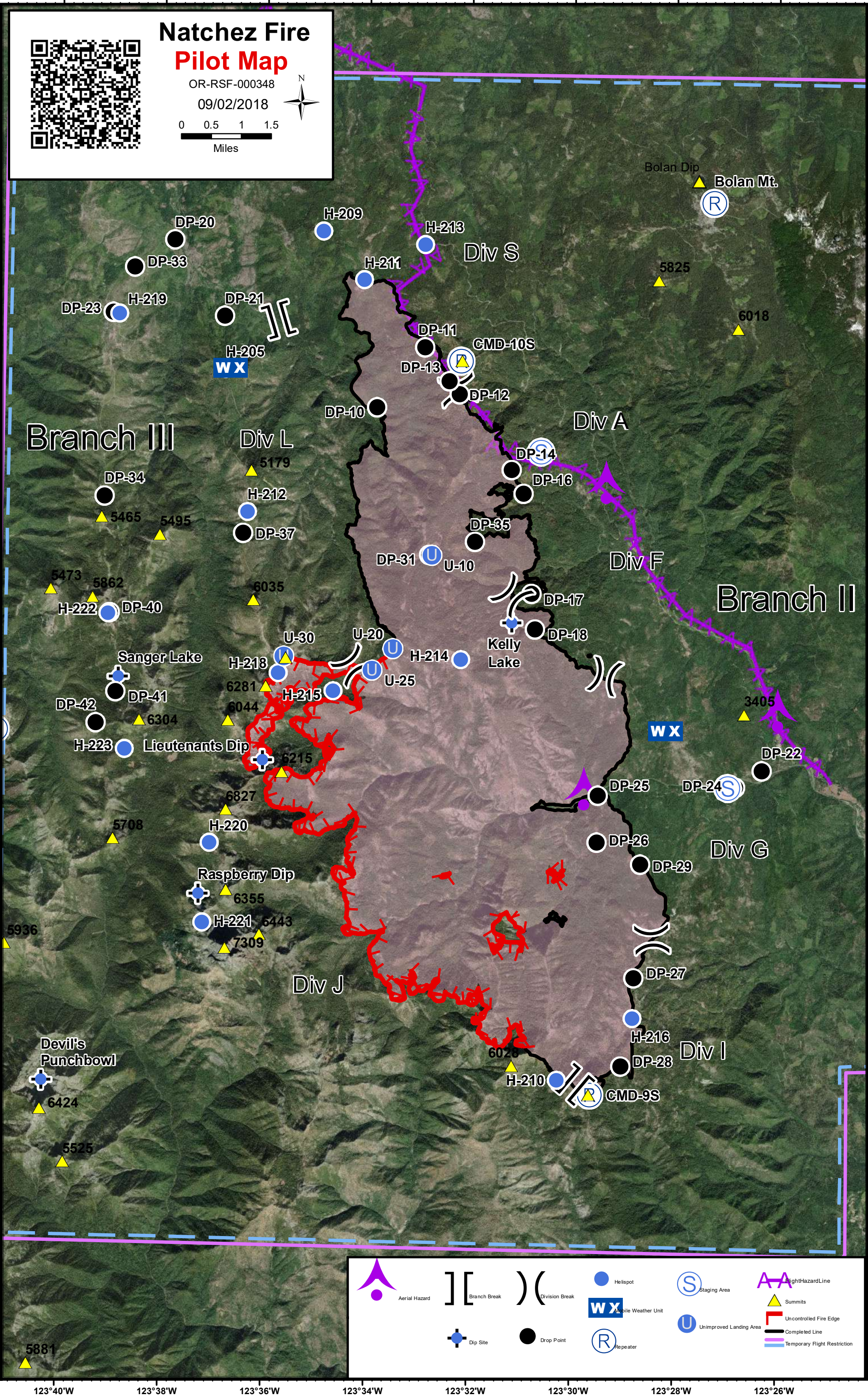
OR-RSF-000348

09/02/2018



42°2'N
42°0'N
41°58'N
41°56'N
41°54'N
41°52'N
41°50'N
41°48'N
41°46'N
41°44'N

42°2'N
42°0'N
41°58'N
41°56'N
41°54'N
41°52'N
41°50'N
41°48'N
41°46'N
41°44'N



Branch III

Branch II

Div S

Div L

Div A

Div F

Div J

Div G

Div I

Bolan Dip
Bolan Mt.

Sanger Lake

Kelly Lake

Devil's Punchbowl

Raspberry Dip

Lieutenants Dip

DP-20
DP-33
DP-23
H-219
DP-21
H-205
WX

H-209
H-211
H-213
DP-11
DP-13
DP-12
CMD-10S

DP-34
H-212
DP-37
5465
5495
5473
5862
H-222
DP-40

DP-10
DP-35
DP-31
U-10
U-30
U-20
U-25
H-214

DP-14
DP-16
DP-17
DP-18
DP-22

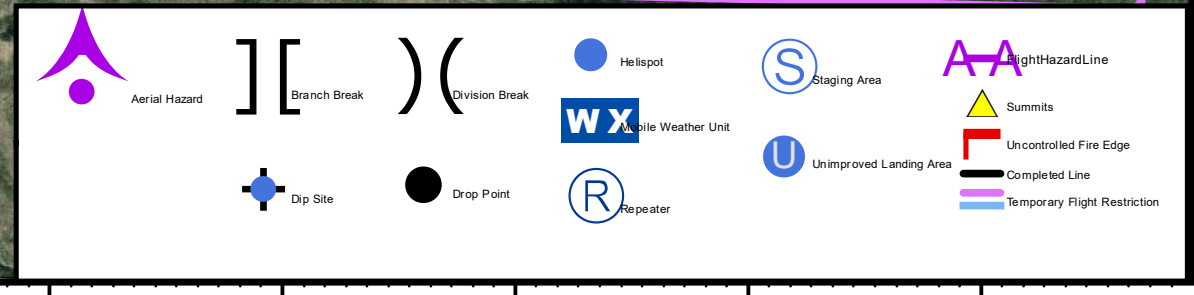
DP-42
DP-41
H-223
6281
6044
H-218
H-215
6215
6827
H-220
5708

DP-25
DP-26
DP-29
DP-27

5936
6424
5525
H-221
6355
6443
7309

6028
H-210
CMD-9S

DP-24
DP-28
H-216



5881

3405

5825

6018

6424

6355

6304

6827

6281

6035

5179

H-219

H-209

H-211

H-213

DP-11

DP-13

DP-12

CMD-10S

DP-34

H-212

DP-37

5473

5862

H-222

DP-40

Sanger Lake

H-218

U-30

U-20

U-25

H-214

Kelly Lake

DP-17

DP-18

DP-42

DP-41

6281

6044

H-215

6215

6827

H-220

5708

Raspberry Dip

6355

H-221

6443

7309

DP-25

DP-26

DP-29

DP-27

6424

5525

6355

H-221

6443

7309

6028

H-210

CMD-9S

DP-24

DP-26

DP-29

DP-27

H-216

DP-28

CMD-9S

3405

DP-22

DP-24

DP-26

DP-29

DP-27

H-216

DP-28

CMD-9S

Bolan Dip

Bolan Mt.

5825

6018

3405

DP-22

DP-24

DP-26

DP-29

DP-27

H-216

DP-28

CMD-9S

DP-24

DP-26

DP-29

DP-27

H-216

DP-28

CMD-9S

DP-24

DP-26

DP-29

DP-27

H-216

DP-28

CMD-9S

DP-24

DP-26

DP-29

DP-27

H-216

DP-28

CMD-9S

DP-24

DP-26

DP-29

DP-27

H-216

DP-28

CMD-9S

DP-24

DP-26

DP-29

DP-27

H-216

DP-28

CMD-9S

DP-24

DP-26

DP-29

DP-27

H-216

DP-28

CMD-9S

DP-24

DP-26

DP-29

DP-27

H-216

DP-28

CMD-9S

DP-24

DP-26

DP-29

DP-27

H-216

DP-28

CMD-9S

DP-24

DP-26

DP-29

DP-27

H-216

DP-28

CMD-9S

DP-24

DP-26

DP-29

DP-27

H-216

DP-28

CMD-9S

DP-24

DP-26

DP-29

DP-27

H-216

DP-28

CMD-9S

DP-24

DP-26

DP-29

DP-27

H-216

DP-28

CMD-9S

DP-24

DP-26

DP-29

DP-27

H-216

DP-28

CMD-9S

DP-24

DP-26

DP-29

DP-27

H-216

DP-28

CMD-9S

DP-24

DP-26

DP-29

DP-27

H-216

DP-28

CMD-9S

DP-24

DP-26

DP-29

DP-27

H-216

DP-28

CMD-9S

DP-24

DP-26

DP-29

DP-27

H-216

DP-28

CMD-9S

DP-24

DP-26

DP-29

DP-27

H-216

DP-28

CMD-9S

DP-24

DP-26

DP-29

DP-27

H-216

DP-28

CMD-9S

DP-24

DP-26

DP-29

DP-27

H-216

DP-28

CMD-9S

DP-24

DP-26

DP-29

DP-27

H-216

DP-28

CMD-9S

DP-24

DP-26

DP-29

DP-27

H-216

DP-28

CMD-9S

DP-24

DP-26

DP-29

DP-27

H-216

DP-28

CMD-9S

DP-24

DP-26

DP-29

DP-27

H-216

DP-28

CMD-9S

DP

Feature Type	Label	Comments	Elevation	Latitude	Longitude
Aerial Hazard		There is nice trailer and pond here - but pond has major cable running over it. This will NOT be used as a dip site - EVER. Please put correct symbology on it!	1,910'	41° 52.313'	-123° 29.762'
Aerial Hazard		Power line crossing	2,900'	41° 56.779'	-123° 29.357'
Aerial Hazard		Power line crossing	1,600'	41° 53.464'	-123° 25.986'
Dip Site	Devil's Punchbowl		4,750'	41° 48.185'	-123° 40.299'
Dip Site	Kelly Lake		4,400'	41° 54.880'	-123° 31.180'
Dip Site	Lieutenants		5,090'	41° 52.864'	-123° 36.021'
Dip Site	Raspberry		5,000'	41° 50.911'	-123° 37.266'
Dip Site	Sanger Lake	Sanger Lake dipsite approved per Klamath NF	5,200'	41° 54.064'	-123° 38.844'
Helibase		Happy Camp Helibase. T2, T3, approved, rendezvous site for Medivav	1200'	41° 52.313'	-123° 29.762'
Helibase		Illinois Valley Airport	1400'	42° 6.373'	-123° 41.029'
Helispot	H-205		3,900'	41° 58.553'	-123° 36.781'
Helispot	H-209	1 way Type 2	4,200'	42° 0.607'	-123° 34.901'
Helispot	H-210		5,200'	41° 48.222'	-123° 30.258'
Helispot	H-211		4,300'	41° 59.861'	-123° 34.089'
Helispot	H-212		4,800'	41° 56.479'	-123° 36.344'
Helispot	H-213	AOBD approved Type 2 and Type 3. Snow Park paved parking area. Great site for T2 & T3 helo. Needs approval.	4,800'	42° 0.382'	-123° 32.908'
Helispot	H-214	Approved for type 2 Helicopter. Will need dust abatement by water drop prior to landing	5,200'	41° 54.335'	-123° 32.173'
Helispot	H-215	Approved for type 1, 2, and 3 helicopters	5,600'	41° 53.877'	-123° 34.662'
Helispot	H-216	Approved for type 2 helicopters. Helispot is on a road and will need to be confirmed clear of traffic prior to any landings. Will need dust abatement	4,600'	41° 49.121'	-123° 28.785'
Helispot	Happy Camp	Happy Camp Helibase. T2, T3 approved, also rendezvous site for medivac	1,200'	41° 47.480'	-123° 23.144'
Helispot	H-218	Approved for a Type 3 Helicopter	5,700'	41° 54.130'	-123° 35.731'
Helispot	H-219	Approved helispot for Type 3 helicopter. The road will need to be clear of all traffic and will need dust abatement prior to landing.	3,460'	41° 59.349'	-123° 38.990'
Helispot	H-220		5,780'	41° 51.652'	-123° 37.053'
Helispot	H-221		5,940'	41° 50.492'	-123° 37.180'
Helispot	H-222		5,400'	41° 54.990'	-123° 39.050'
Helispot	H-223		5,370'	41° 53.010'	-123° 38.718'
Unimproved Landing Area	U-10	Emergency landing ONLY! Forest doesn't want us to use it. Wet and boggy in the middle of meadow if you have to land for emergency use DON'T land in the middle!	5,000'	41° 55.861'	-123° 32.746'
Unimproved Landing Area	U-20	Unimproved LZ. Type 3 Helicopter only, HOGE. Dust abatement needed.	5,000'	41° 54.494'	-123° 33.495'
Unimproved Landing Area	U-25			41° 54.182'	-123° 33.895'
Unimproved Landing Area	U-30	Nice helispot. No improvement needed.	6,300'	41° 54.379'	-123° 35.615'
Sling Site	SS-30	Divs J Sling Sight/100ft long line	5,600'	41° 54.259'	-123° 35.096'
Incident Command Post	Natchez ICP		1,600'	41° 47.812'	-123° 22.289'
Lookout		View point for spots individual F looking into upper Tom Gray drainage	3,470'	41° 54.281'	-123° 28.909'
Repeater	CMD-9S		5,600'	41° 48.012'	-123° 29.619'
Repeater	CMD-10S		6,160'	41° 58.684'	-123° 32.195'
Repeater	CMD-11		5,490'	41° 53.284'	-123° 41.232'
Repeater	Bolan Mt.		6,050'	42° 1.007'	-123° 27.271'
Retardant/Mud Pit			2,520'	41° 51.615'	-123° 22.975'