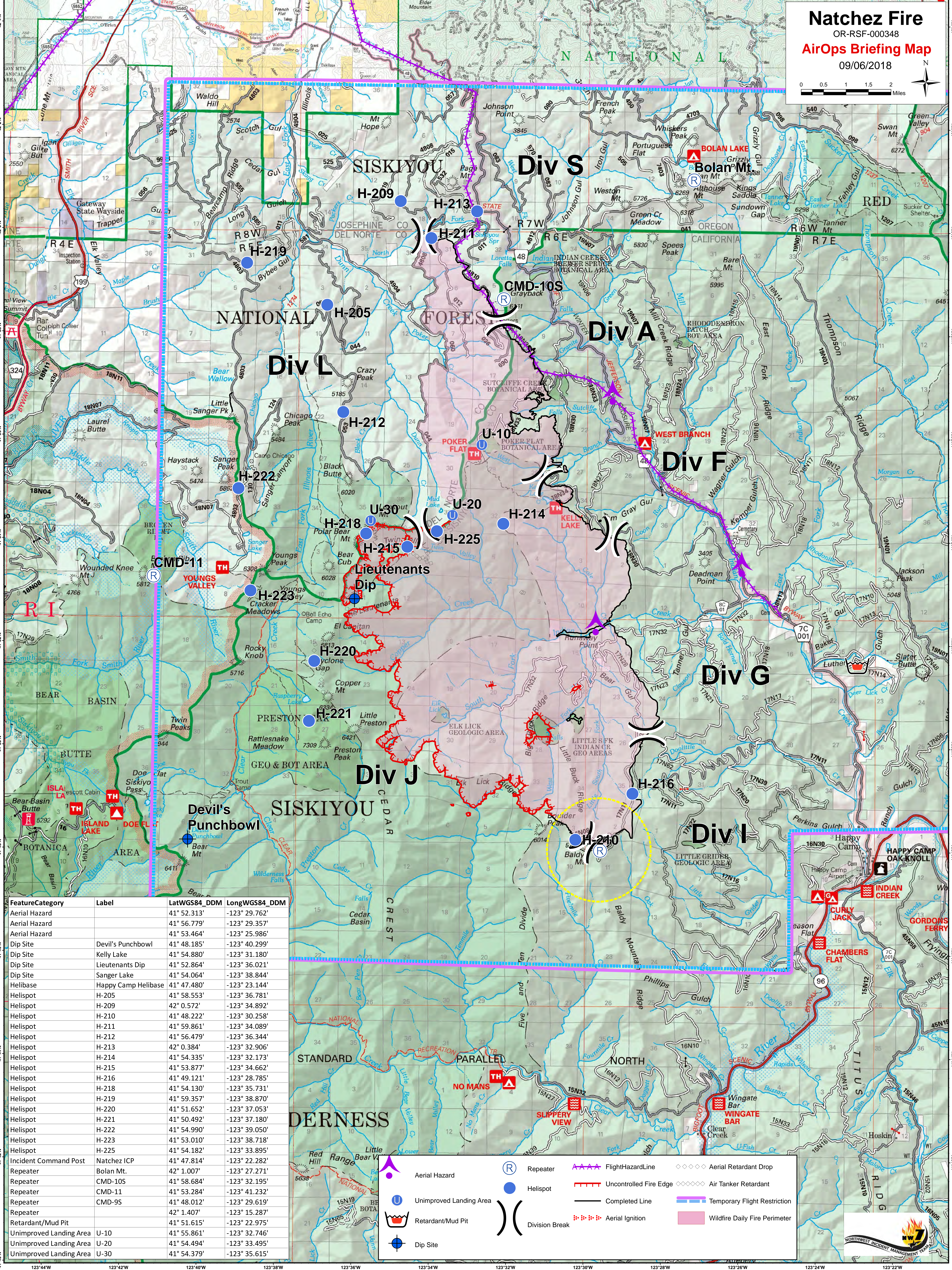
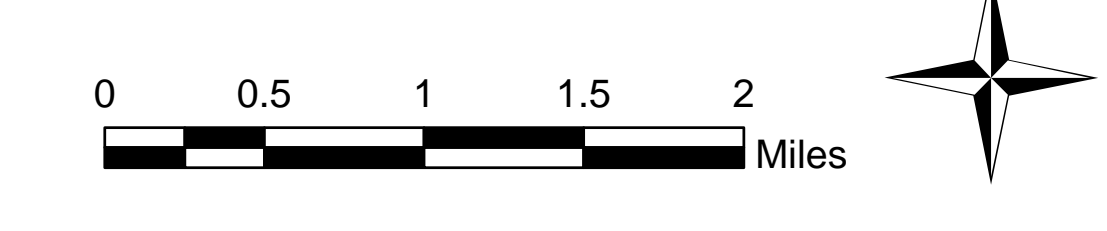


Natchez Fire

OR-RSF-000348

AirOps Briefing Map

09/06/2018



FeatureCategory	Label	LatWGS84_DDM	LongWGS84_DDM
Aerial Hazard		41° 52.313'	-123° 29.762'
Aerial Hazard		41° 56.779'	-123° 29.357'
Aerial Hazard		41° 53.464'	-123° 25.986'
Dip Site	Devil's Punchbowl	41° 48.185'	-123° 40.299'
Dip Site	Kelly Lake	41° 54.880'	-123° 31.180'
Dip Site	Lieutenants Dip	41° 52.864'	-123° 36.021'
Dip Site	Sanger Lake	41° 54.064'	-123° 38.844'
Helibase	Happy Camp Helibase	41° 47.480'	-123° 23.144'
Helispot	H-205	41° 58.553'	-123° 36.781'
Helispot	H-209	42° 0.572'	-123° 34.892'
Helispot	H-210	41° 48.222'	-123° 30.258'
Helispot	H-211	41° 59.861'	-123° 34.089'
Helispot	H-212	41° 56.479'	-123° 36.344'
Helispot	H-213	42° 0.384'	-123° 32.906'
Helispot	H-214	41° 54.335'	-123° 32.173'
Helispot	H-215	41° 53.877'	-123° 34.662'
Helispot	H-216	41° 49.121'	-123° 28.785'
Helispot	H-218	41° 54.130'	-123° 35.731'
Helispot	H-219	41° 59.357'	-123° 38.870'
Helispot	H-220	41° 51.652'	-123° 37.053'
Helispot	H-221	41° 50.492'	-123° 37.180'
Helispot	H-222	41° 54.990'	-123° 39.050'
Helispot	H-223	41° 53.010'	-123° 38.718'
Helispot	H-225	41° 54.182'	-123° 33.895'
Incident Command Post	Natchez ICP	41° 47.814'	-123° 22.282'
Repeater	Bolan Mt.	42° 1.007'	-123° 27.271'
Repeater	CMD-10S	41° 58.684'	-123° 32.195'
Repeater	CMD-11	41° 53.284'	-123° 41.232'
Repeater	CMD-9S	41° 48.012'	-123° 29.619'
Repeater		42° 1.407'	-123° 15.287'
Retardant/Mud Pit		41° 51.615'	-123° 22.975'
Unimproved Landing Area	U-10	41° 55.861'	-123° 32.746'
Unimproved Landing Area	U-20	41° 54.494'	-123° 33.495'
Unimproved Landing Area	U-30	41° 54.379'	-123° 35.615'

Aerial Hazard	Repeater	Flight Hazard Line	Aerial Retardant Drop
Unimproved Landing Area	Helispot	Uncontrolled Fire Edge	Air Tanker Retardant
Retardant/Mud Pit	Division Break	Completed Line	Temporary Flight Restriction
Dip Site		Aerial Ignition	Wildfire Daily Fire Perimeter

