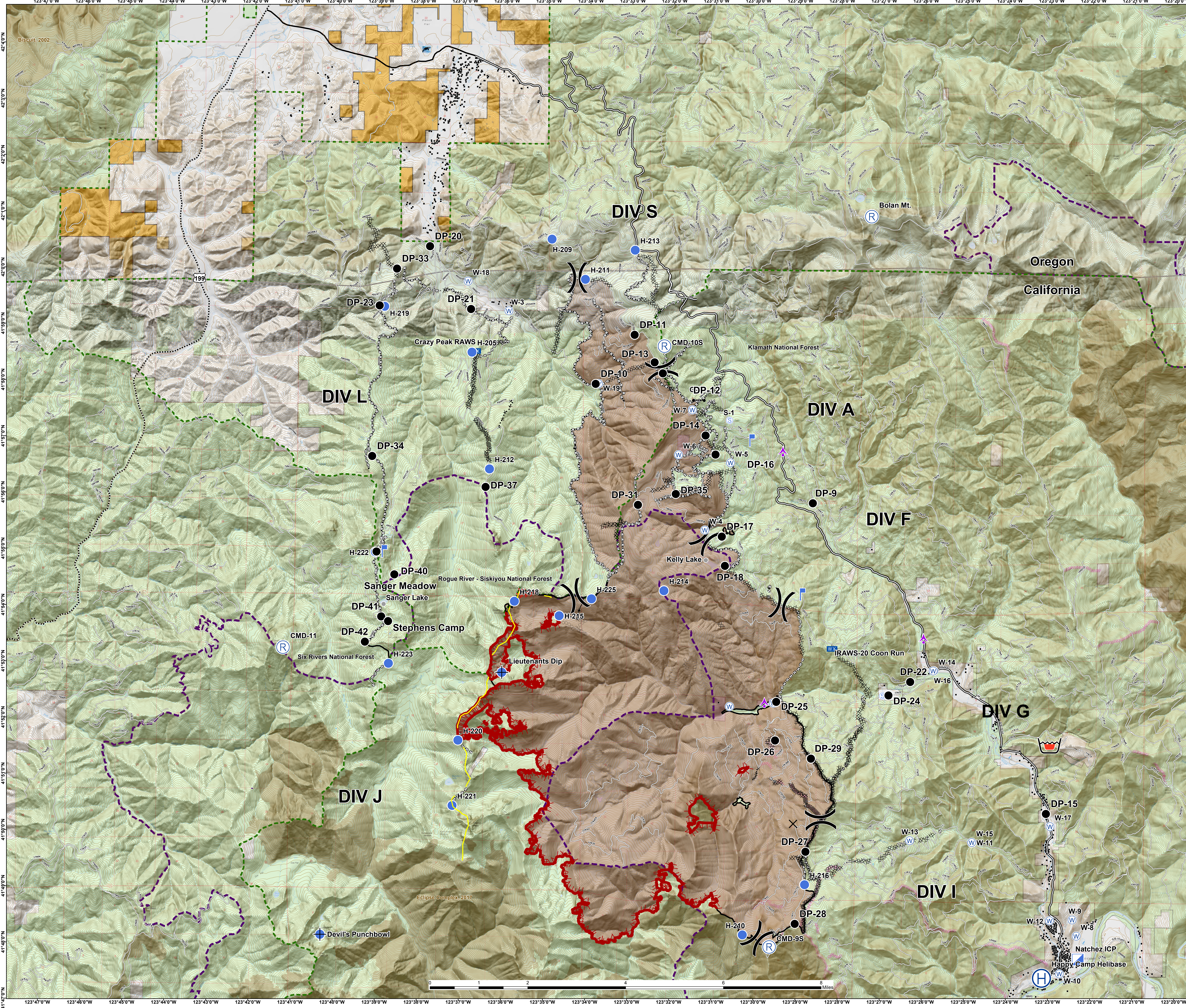


Natchez Fire
OR-RSF-000348
Operations Map
9/10/2018
32,398 acres
NAD 83
UTM Zone 10



Legend

- Natural Barrier
- Aerial Hazard
- Dip Site
- Closure
- Drop Point
- Gate
- Helibase
- Helispot
- Incident Command Post
- Lookout
- Mobile Weather Unit
- Repeater
- Retardant/Mud Pit
- Staging Area
- Water Source
- Value at Risk
- Other
- Division Break
- Uncontrolled Fire Edge
- Completed Line
- Completed Dozer Line
- Completed Hand Line
- Road as Completed Line
- Explosive Line
- Proposed Dozer Line
- Fire Break Planned or Incomplete
- Aerial Ignition
- Aerial Retardant Drop
- Air Tanker Retardant
- Ridge/Geographic Feature
- Structures
- Administrative Forest
- State
- Fire History
- Historic Dozer Line
- U.S. Forest Service
- Bureau of Land Management
- Other Land, Including Private
- Wilderness



42°30'N
42°20'N
42°10'N
41°50'N
41°40'N
41°30'N
41°20'N
41°10'N
41°00'N
40°50'N
40°40'N
40°30'N
40°20'N
40°10'N
40°00'N

123°19'0"W
123°18'0"W
123°17'0"W
123°16'0"W
123°15'0"W
123°14'0"W
123°13'0"W
123°12'0"W
123°11'0"W
123°10'0"W
123°9'0"W
123°8'0"W
123°7'0"W
123°6'0"W
123°5'0"W
123°4'0"W
123°3'0"W
123°2'0"W
123°1'0"W
123°0'0"W

123°47'0"W 123°46'0"W 123°45'0"W 123°44'0"W 123°43'0"W 123°42'0"W 123°41'0"W 123°40'0"W 123°39'0"W 123°38'0"W 123°37'0"W 123°36'0"W 123°35'0"W 123°34'0"W 123°33'0"W 123°32'0"W 123°31'0"W 123°30'0"W 123°29'0"W 123°28'0"W 123°27'0"W 123°26'0"W 123°25'0"W 123°24'0"W 123°23'0"W 123°22'0"W 123°21'0"W 123°20'0"W 123°19'0"W 123°18'0"W 123°17'0"W 123°16'0"W