

INCIDENT ACTION PLAN

Day Shift
Sunday, August 26, 2018
0600-1800

RAMSEY CANYON FIRE

Incident Order Number
OR-711S-325-19
Incident Fire Number
711325-19



"STEWARDSHIP IN FORESTRY"

ICS-202 INCIDENT OBJECTIVES

1. Incident Name	2. Date Prepared	3. Time Prepared
Ramsey Canyon Fire	08/25/2018	2100
4. Operational Period		
DAY SHIFT	Sunday	August 26, 2018
		0600-1800

Incident Objectives

- Provide for the safety of firefighters and the public through deliberate risk management, implementation of appropriate mitigations and clear understanding of assignments.
- Protect private lands, communities, timber, infrastructure and other values at risk by minimizing the size of the fire.
- Protect structures within delegated areas by preposition and use of conflagration resources. Re-evaluate, triage, and perform structure protection as appropriate.
- Provide initial attack within the designated response area and support local IA efforts.
- Develop and deliver accurate and timely fire information to landowners, the public, and cooperators, through the use of personal contacts, social media, public meetings, and web-sites as needed.
- Be fiscally responsible by continuing to evaluate incident needs and make appropriate adjustments.
- Treat all personnel, landowners, cooperators and the public with dignity and respect. Promote a positive and harassment free work environment.
- Provide for the protection of natural and cultural resources during suppression and suppression repair activities, by working in consultation with Resource Advisors and following the special instructions as detailed in the ICS204 for each Division.

Operational Objectives

- Utilize strategies and tactics that will minimize acres burned, and keep the fire:
 - East of East Evans Creek/West Evans Creek Road
 - North of Elkhorn Butte
 - West of Meadows Road
 - South of Evans Creek
- Implement suppression tactics in coordination with Resource Advisors on BLM lands to minimize impacts to resource values, threatened and endangered species, and cultural sites.

6. Weather Forecast for Period

See attached weather forecast.

7. General Safety Message

See attached safety message.

8. Attachments (mark if attached)

- | | | |
|---|--|--|
| <input checked="" type="checkbox"/> Organization List - ICS 203 | <input checked="" type="checkbox"/> Fire Weather Forecast | <input checked="" type="checkbox"/> Incident Map |
| <input checked="" type="checkbox"/> Div. Assignment Lists - ICS 204 | <input checked="" type="checkbox"/> Fire Behavior Forecast | <input type="checkbox"/> Rehab Plan |
| <input checked="" type="checkbox"/> Communications Plan - ICS 205 | <input checked="" type="checkbox"/> Air Operations Summary - ICS 220 | <input checked="" type="checkbox"/> Traffic Plan |
| <input checked="" type="checkbox"/> Medical Plan - ICS 206 | <input checked="" type="checkbox"/> Safety Message | |

9. Prepared by

10. Approved by

Colleen Kizer

Peter H. Hester

ICS-204 Division Assignment List

3. Incident Name Ramsey Canyon Fire	1. Branch I	2. Division/Group A
DAY SHIFT	Sunday	August 26, 2018
		0600-1800

5. Operations Personnel

Operations Chief	Pellissier, John/ Tillotson, John (t)	Division/Group Supervisor	Flock, Matt / Fitch, Jon (t)
Safety Officer	West, Scott	Air Attack Supervisor	Leach, Mike

6. Resources Assigned this Period

Strike Team/Task Force Resource Designator	Leader	Number Persons	14th Day	21st Day	30th Day	Comments
O-46 TFLD	Locke, Brian	1				
O-592 TFLD	McGuire-Dale, Alan	1				
O-37 TFLD (t)	Monteil, James	1				
O-7 HEQB	Coons, Quincy	1				
O-594 FELB	Henneman, Mike	1				
O-1 FMOD Cowboy Fire	Lackler / Smith	2				
O-2 FMOD Wapati Forestry	Syfert / Combe	2				
O-567 FMOD Jesse Wilson	Wright / Wilson	2				
C-514 HC2IA SRV	Kenick, James	20				
C-11 HC2 Lava River	Deja, Javier	20				
C-12 HC2 JC Orzco	Orozco, Chris	20				
C-507 HC2 Franco	Rojas, Ignacio	20				
C-508 HC2 R Franco	Castros, Armondo	20				
E-539 ENG4 Pacific Coast	Voss, Rudi	2				
E-545 ENG4 Diamond Fire	Wilson, Dean	2				
E-17 ENG6 Ben Taylor	Williams, Dakota	3				
E-32 ENG5 Mike Wonsyld Logging	Wonsyld, Brent	2				
E-24 ENG6 Rogue Fire & Logging		3				Double Shift
E-35 ENG6 Wimer Excavation	Bracher, Shane	3				
E-37 WAT2 Valley Fire Rural Metro	Otte, Ed	1				
E-9 DOZ3 D3 Central Pipeline	Slater, Jake	1				Double Shift
E-11 DOZ2 D6 Central Pipeline	Wilson, Jonathan	1				Double Shift
E-513 DOZ2 General Exc & Const	Miller, Jimmy	2				w/ E-514 Lowboy
E-527 MAST Davis Corps	McGloughlin, Craig	2				w/ E-530 lowboy
E-528 MAST Davis Corps	Davis, Chad	2				w/ E-529 lowboy
SWO Taskforce	Keene, Jesse	43				
TAP6 - TCP #4						

7. Control Operations

Fall hazard trees to mitigate threats during holding and mop-up actions.
 Assist structure protection resources to protect and secure structures as necessary.
 Hold and begin mop up operations.
 Mop up 25 feet from perimeter.

8. Special Instructions

Notify and coordinate burn operations with adjacent Divisions and resources.
 Ensure that communications are established with OSFM resources.
 Back haul any garbage and excess equipment.

Be careful not to disturb cultural resources or artifacts. If any artifacts are spotted do not touch or remove them. Report the location (with a picture if possible) to your Division Supervisor to forward to the Liaison Officer.

9. Division/Group Communication Summary

Function	Frequency	Tone	Channel	Function	Frequency	Tone	Channel
Command RX	151.445	146.2	9	Logistics			
TX	158.895						
Tactical Div/Group	151.235	156.7	1	Air to Ground	151.475	156.7	7

Prepared by: *Colleen Kiser* Resource Unit Leader Approved by: *[Signature]* Plans Section Chief

ICS-204 Division Assignment List

3. Incident Name Ramsey Canyon Fire	1. Branch I	2. Division/Group D
DAY SHIFT	Sunday	August 26, 2018
		0600-1800

5. Operations Personnel

Operations Chief	Pellissier, John/ Tillotson, John (t)	Division/Group Supervisor	Arbogast, Tyler
Safety Officer	West, Scott	Air Attack Supervisor	Leach, Mike

6. Resources Assigned this Period

Strike Team/Task Force Resource Designator	Leader	Number Persons	14th Day	21st Day	30th Day	Comments
O-19 TFLD	Stratton, Hunter	1				
O-39 TFLD	Jones, Frank	1				
O-20 HEQB	Altheide, Crystal	1				
C-513 HC2IA Florida Crew 3	Sechrist, David	20				
C-7 HC2 North Reforestation	Rincon, Gerodo	20				
C-8 HC2 Franco Reforestation	Franco, Joshua	20				
C-517 HC2 Grayback	McIntire, Scott	20				
C-518 HC2 First Strike	Reich, Jim	19				
E-540 ENG4 Fanco	Pickering, Jamie	3				
E-542 ENG5 Chewack Wildfire	Reinbold, Tim	3				
E-12 ENG6 Big Elk	Call, Brandon	3				Double Shift
E-522 ENG6 Fourty Boots	Karnes, David	2				
E-8 DOZ2 Roger's Contracting	Low, Skip	1				
E-13 DOZ2 BBC Construction	Burks, Danny	1				
E-525 DOZ2 Brierville	Parker, Richard	2				w/ E-526 lowboy
TAP 6 - TCP #3						

7. Control Operations

Fall hazard trees to mitigate threats during holding and mop-up actions.
 Assist structure protection resources to protect and secure structures as necessary.
 Hold and begin mop up operations.
 Mop up 25 feet from perimeter.

8. Special Instructions

Notify and coordinate burn operations with adjacent Divisions and resources.
 Ensure that communications are established with OSFM resources.
 Back haul any garbage and excess equipment.

Be careful not to disturb cultural resources or artifacts. If any artifacts are spotted do not touch or remove them. Report the location (with a picture if possible) to your Division Supervisor to forward to the Liaison Officer.

9. Division/Group Communication Summary

Function	Frequency	Tone	Channel	Function	Frequency	Tone	Channel
Command RX	151.430	146.2	10	Logistics			
TX	159.450						
Tactical Div/Group	151.250	156.7	2	Air to Ground	151.475	156.7	7

Prepared by: *Colleen Kiser* Resource Unit Leader
 Approved by: *[Signature]* Plans Section Chief
 Date: *8/25/18*

ICS-204 Division Assignment List

3. Incident Name Ramsey Canyon Fire	1. Branch I	2. Division/Group H
DAY SHIFT	Sunday	August 26, 2018
0600-1800		

5. Operations Personnel

Operations Chief	Pellissier, John/ Tillotson, John (t)	Division/Group Supervisor	Waldron, Keith
Safety Officer	West, Scott	Air Attack Supervisor	Leach, Mike

6. Resources Assigned this Period

Strike Team/Task Force Resource Designator	Leader	Number Persons	14th Day	21st Day	30th Day	Comments
O-42 TFLD	VanDenabeele, David	1				
O-43 TFLD	Evans, Brett	1				
O-16 FMOD Roger's Contract Cutting	Brown/Smith	2				
C-13 HC2IA Southwest City Crew	Chavarria, Joshua	21				
C-503 HC2 Oregon Woods	Watking, Chuc	20				
*C-504 HC2 Dustbusters #2	Jurasevich, Braton	20				
C-509 HC2 Tom Ferry	Segal, Glen	20				
E-536 ENG4 All Phase Electric	Harrison, Lonnie	3				
E-553 ENG4 AAA Thunderbolt	Mortimore, Brock	3				
*E-517 ENG6 West Coast	Gatchell, Eric	3				
*E-518 ENG6 West Coast	Webinger, Dusty	3				
*E-1 WAT2 Johnston Water	Johnston, Nathan	1				Double Shift
E-15 WAT1 Table Rock	Okey, Albert	1				Double Shift
E-566 WAT2 Cherokee Const	Bonney, Tom	1				Double Shift
TAP 6 - TCP #2						

7. Control Operations

Fall hazard trees to mitigate threats during holding and mop-up actions.
 Assist structure protection resources to protect and secure structures as necessary.
 Hold and begin mop up operations.
 Mop up 50 feet from perimeter.
 Identify and be prepared to provide Initial Attack resources if requested.

8. Special Instructions

Notify and coordinate burn operations with adjacent Divisions and resources.
 Ensure that communications are established with OSFM resources.
 *Indicates IA resource. Initial Attack designated resources be prepared to respond within 10 minutes.
 Initial Attack resources ensure that the Initial Attack communications plan is understood.
 Back haul any garbage and excess equipment.
 Be careful not to disturb cultural resources or artifacts. If any artifacts are spotted do not touch or remove them. Report the location (with a picture if possible) to your Division Supervisor to forward to the Liaison Officer.

9. Division/Group Communication Summary

Function	Frequency	Tone	Channel	Function	Frequency	Tone	Channel
Command RX	151.430	146.2	10	Logistics			
TX	159.450						
Tactical Div/Group	151.355	156.7	3	Air to Ground	151.475	156.7	7

Prepared by: *Colleen Kiser* Resource Unit Leader Approved by: *[Signature]* Plans Section Chief
 Date: *8/25/16*

ICS-204 Division Assignment List

3. Incident Name Ramsey Canyon Fire	1. Branch I	2. Division/Group K
DAY SHIFT	Sunday	August 26, 2018
		0600-1800

5. Operations Personnel

Operations Chief	Pellissier, John/ Tillotson, John (t)	Division/Group Supervisor	Coley, Glen / Witz, Karl (IA*)
Safety Officer	West, Scott	Air Attack Supervisor	Leach, Mike

6. Resources Assigned this Period

Strike Team/Task Force Resource Designator	Leader	Number Persons	14th Day	21st Day	30th Day	Comments
*O-8 TFLD	Ripberger, Kyle	1				
O-600 TFLD	Pope, Jim	1				
O-15 FMOD Cook's Timber Falling	Hansen/Tungate	2				
*C-505 HC2 Dustbusters #1	Burchett, Silas	20				
C-506 HC2 PR Reforestation	Mendoza, Marco	20				
C-510 HC2 Steelhead Enterprises	Rodriquez, Alejandro	20				
E-510 ENG4 Inbound	Tibbals, Jordan	3				
E-551 ENG4 Firestormers	Knipe, Matt	3				
E-549 ENG5 Allied Water	Cardinal, Phil	2				
*E-25 ENG6 Freeland Farm	Freeland, Greg	2				Double Shift
*E-516 ENG6 Central Wildfire	Wilson, Patrick	3				
E-543 ENG6 Aqua Fire	Callahan, Danny	3				
E-554 ENG6 Tri-Co	Boren, Rich	3				
E-567 WAT3 Allied Water Service	Anderson, Josh	1				
E-5 DOZ2 Parker Excavation	Mendell, Nathan	2				w/ E-39 lowboy - Double Shift
E-509 MAST Brierville	Ireland, Rick	1				
TAP 6 - TCP #1						

7. Control Operations

Assist structure protection resources to protect and secure structures as necessary.
 Locate and contain spot fires.
 Identify and be prepared to provide Initial Attack resources if requested.
 Fall hazard trees to mitigate threats during holding and mop-up actions.
 Assist structure protection resources to protect and secure structures as necessary.
 Hold and begin mop up operations.
 Mop up 50 feet from perimeter.

8. Special Instructions

Notify and coordinate burn operations with adjacent Divisions and resources.
 Ensure that communications are established with OSFM resources.
 *Indicates IA resource. Initial Attack designated resources be prepared to respond within 10 minutes.
 Initial Attack resources ensure that the Initial Attack communications plan is understood.
 Document location of spot fires with ribbon and gps coordinates.
 Back haul any garbage and excess equipment.
 Be careful not to disturb cultural resources or artifacts. If any artifacts are spotted do not touch or remove them. Report the location (with a picture if possible) to your Division Supervisor to forward to the Liaison Officer.

9. Division/Group Communication Summary

Function	Frequency	Tone	Channel	Function	Frequency	Tone	Channel
Command RX	151.430	146.2	10	Logistics			
TX	159.450						
Tactical Div/Group	151.415	156.7	5	Air to Ground	151.475	156.7	7

Prepared by: *Colleen Kiser* Resource Unit Leader Approved by: *[Signature]* PSC Plans Section Chief
 Date: *8/25/18*

ICS-204 Division Assignment List

3. Incident Name Ramsey Canyon Fire	1. Branch I	2. Division/Group N
DAY SHIFT	Sunday	August 26, 2018
		0600-1800

5. Operations Personnel

Operations Chief	Pellissier, John/ Tillotson, John (t)	Division/Group Supervisor	Williams, Mitch
Safety Officer	West, Scott	Air Attack Supervisor	Leach, Mike

6. Resources Assigned this Period

Strike Team/Task Force Resource Designator	Leader	Number Persons	14th Day	21st Day	30th Day	Comments
O-36 TFLD	Peterson, Jana	1				
O-44 TFLD(t)	Korenegay, Anthony	1				
O-554 FELB	Michael, Dylan	1				
O-552 FMOD White's Tree Service	Ehlers/Ackley	2				
O-553 FMOD White's Tree Service	White/Douglas	2				
C-9 HC2 R&R Contracting	Rocha, Victor	20				
C-10 HC2 R&R Contracting	Ceja, Juan	20				
C-511 HC2 CSR Enterprises	Katon, Remington	20				
E-31 ENG6 Wapati	Burroughs, Gary	2				
E-33 ENG6 Rual Metro Fire	Coates, Eathan	2				
E-34 ENG6 JB Forestry	Garcia, Ivan	2				
E-511 ENG6 C&K Wildfire	Reese, Dave	2				
E-512 ENG6 Brierville	Dilling, CJ	3				
E-524 ENG6 C2C Wildfire	Walsh, Wayne	2				
E-565 ENG6 Tom Brooks Trucking	Shoaf, Dusty	2				
E-522 WAT3 Fire Sail 6x6	Mitchell, Tallen	1				

7. Control Operations

Fall hazard trees to mitigate threats during holding and mop-up actions.
 Locate and contain spot fires.
 Mop up 50 feet from perimeter.
 Assist structure protection resources to protect and secure structures as necessary.

8. Special Instructions

Notify and coordinate burn operations with adjacent Divisions and resources.
 Ensure that communications are established with OSFM resources.
 Document location of spot fires with ribbon and gps coordinates.
 Back haul any garbage and excess equipment.
 Be careful not to disturb cultural resources or artifacts. If any artifacts are spotted do not touch or remove them. Report the location (with a picture if possible) to your Division Supervisor to forward to the Liaison Officer.

9. Division/Group Communication Summary

Function	Frequency	Tone	Channel	Function	Frequency	Tone	Channel
Command RX	151.445	146.2	9	Logistics			
TX	158.895						
Tactical Div/Group	151.460	156.7	6	Air to Ground	151.475	156.7	7

Prepared by: <i>Colleen Kiser</i>	Resource Unit Leader	Approved by: <i>[Signature]</i>	Plans Section Chief
Date: <i>8/25/18</i>			

AIR OPERATIONS SUMMARY		Incident: RAMSEY CANYON		DATE: 08/26/2018		TFR? Y							
Prepared By: Dan Menk	Prepared: 08/25/2018	SUNRISE: 06:31	SUNSET: 19:55	PUMPKIN TIME: 2025	TFR radius: 5	nm							
REMARKS: High Power Transmission Lines in/near the fire area		Surface to: 9000ft		Center Lat: 42 34.70		Long: 122 59.61							
Beagle Helibase 5400 Beagle Rd, White City 42 32.2 by 122 54.4 elevation 1425 MSL													
PERSONNEL:		PHONE:		FREQUENCIES		RECEIVE		TRANSMIT		tone		REMARKS	
AOBD	Neal Laugle	503-580-4942		A/A Fixed Wing/TFR		133.4250		same					
ATGS	Mike Leach	541-219-0477		A/A Rotor		118.1250		same					
ATGS	Herb Johnson			A/G Tac 7		151.4750		same		156.7		same	
ATGS (t)	Robert Franson	541-297-7470		A/G Secondary Tac 4		151.3850		same		156.7		same	
HEB1	Dan Menk	541-731-4569		TOLC/Deck		163.1750		same					
HEB1(t)	Kelly Foster	503-586-6944		A/A Initial Attack		124.4750		same				SWO Initial Attack	
HMGB	Terry Owen	601-660-6316		A/G Initial Attack		151.3100		same		156.7		TX tone req'd "WHITE NET"	
HMGB(t)	Brent Chapman	541-816-7162		Disp/FF ODF Medford		151.1750		same		179.9		"Medford ODF" (Roxy Ann rptr)	
HMGB(t)	Cameron Dupree	541-840-9904		Disp/FF ODF G.P.		151.1450		same		179.9		"Grants Pass" (Sexton rptr)	
ABRO	Stephanie Beall			National Flgt Follow		168.6500		168.6500		110.9		Use on Federal fires	
				Air Guard		168.6250		168.6250		110.9		Emergencies. Monitor always.	
HELICOPTERS: Rappel ship ordered by ODF dispatch thru MICC													
FAA#	TYPE	MAKE/MODEL	BASE	AVAIL	REMARKS	TYPE/ID	BASE	AVAIL	REMARKS	FIXED WING: Dispatch must order lead planes			
N84CK	3	206B-3	Beagle	09:00	Air Attack Platform IA	T-62	RDM	0900					
N350AW	3	AS350 B3	Beagle	09:00	With Helitack Crew								
N9047C	3	Bell 206 L4	Beagle	09:00	Air Attack Platform IA								
N12AT	3	Bell 206 B3	Beagle	09:00									
N669KB	2	UH-1F	Beagle	09:00	Bucket/Restricted	52U	GP	1000					
N284MM	2	UH-1F	Beagle	09:00	Bucket/Restricted								
N626CK	1	S-61 N	Beagle	09:00	Tank								
N618CK	1	S-61 NM	White City	09:00	Bucket								
MERCY 105	3+	Bell 407, no hoist	MFR	24/7	NVG. Ordered thru 911								
Alert 3	3+	MD-600N	Ashland	30 min.	Short Haul. Order thru Jackson Co.S.O.								

Incident Radio Communications Plan

1. Incident Name:
Ramsey Canyon Fire

2. Date/Time Prepared:
08/25/2018 19:00

3. Operational Period: Day
8/26/2018

4. Basic Radio Channel Utilization – Ramsey Canyon Fire

System/Cache	Portable Channel	Function	Frequency	Assignment	Remarks
Fire Cache Tac 1	1	Tactical	151.235 TX/RX Tone 156.7	Div. A	
Fire Cache Tac 2	2	Tactical	151.250 TX/RX Tone 156.7	Div. D	
Fire Cache Tac 3	3	Tactical	151.355 TX/RX Tone 156.7	Div. H	
Fire Cache Tac 4	4	Tactical	151.385 TX/RX Tone 156.7	Secondary Air to Ground	
Fire Cache Tac 5	5	Tactical	151.415 TX/RX Tone 156.7	Div. K	
Fire Cache Tac 6	6	Tactical	151.460 TX/RX Tone 156.7	Div. N	
Fire Cache Tac 7	7	Tactical	151.475 TX/RX Tone 156.7	Air to Ground	
Fire Cache Tac 8	8	Tactical	151.490 TX/RX Tone 156.7	unassigned	
CMD 1	9	Repeater	Rx 151.445 Tx 156.895 Tx Tone 146.2	Command 1 <i>Fireline to ICP</i>	FC Net 2 Repeater Div. A / N
CMD 2	10	Repeater	Rx 151.430 Tx 159.450 Tx Tone 146.2	Command 2 <i>Fireline to ICP</i>	FC Net 2 Backup Div. D / H / K
Medford ODF	11	Repeater	Rx 151.175 Tx 159.4125 Rx/Tx Tone 179.9	Medford Dispatch I/A	Roxy Ann Repeater Mobile Dist Relay 16F) (ODF
White Net	12	Tactical	151.310 TX/RX Tone 156.7	I/A Air to Ground	
State Fire Marshal	13	Structural	154.280	Structural Tac	
VTAC 37	14	Structural	Rx 154.4525 Tx 156.7375 Tx Tone 136.5	Structural Repeater	
RV Tac 2	15	Tactical	159.240 TX/RX Tone 156.7	Initial Attack	ODF NICS
Air Guard	16	Emergency	168.625 TX Tone 110.9	Emergency	Air Guard

5. Prepared by: **LeRoy E. Dwire** (Communications Unit)

All frequencies are narrowband analogue.



INCIDENT Weather Forecast

FORECAST NO: 05

NAME OF FIRE: Ramsey Canyon

PREDICTION: Operational Day Shift

UNIT: Oregon Dept. of Forestry

SHIFT DATE: Sunday 08/26/2018

SIGNED: Greg Murdoch 

Incident Meteorologist (IMET)

TIME AND DATE

FORECAST ISSUED: Saturday, 08/25/2018 at 2000

WEATHER DISCUSSION: Minimum RH will trend noticeably higher and temperatures will cool off a few degrees with a better marine influence today. Less mixing and higher moisture levels will cap the Haines Index to a 3 Very Low. A brief morning shower is possible Monday and noticeably dry and warmer conditions are expected Tuesday.

WEATHER FORECAST TODAY:

WEATHER: Areas of smoke, otherwise partly cloudy.

TEMPERATURES: Highs 74-79.

MINIMUM HUMIDITY: 28-38%.

20 FT WINDS:

RIDGETOP – Northwest-north 6-12 mph a few gusts near 18 mph after 11 AM.

SLOPE/VALLEY – Terrain driven 4-7 mph, gusts up to 15 mph in aligned valleys.

HAINES INDEX: 3 (Very low).

STABILITY/INVERSION: Lifting around 11 AM.

SUNDAY NIGHT: Partly cloudy. Lows 50-55. Maximum RH 82-92%. Ridgetop winds north 8-11 mph a few gusts near 18 mph til 1230 AM decreasing 5-8 mph gusts to 18 mph after 1230 AM. Otherwise downslope/downvalley 3-6 mph, gusts up to 15 mph in aligned valleys.

MONDAY: A light morning shower possible. Otherwise warmer and drier. Highs 76-81. Minimum humidity 24-35%. Ridgetop winds north to northwest 6-10 mph otherwise terrain driven 3-5 mph. Haines Index 4 (Low).

EXTENDED...

TUESDAY: Much warmer and drier. Mostly sunny. Highs 82-87. Minimum RH 20-25%. Northeast wind 7-11 mph.

WEDNESDAY: Temperatures back off a few degrees and humidity trends up. Highs mostly in the 70s. Humidity in the 20-30% range. Northwest-north wind 5-10 mph.

Sunrise: 630 AM PDT

Sunset: 755 PM PDT

FIRE BEHAVIOR FORECAST

FORECAST NUMBER: 5	INCIDENT TYPE: Wildfire
FIRE NAME: Ramsey Canyon	OPERATIONAL PERIOD: August 26, 2018 Day
DATE ISSUED: August 25, 2018	TIME ISSUED: 2000
UNIT: OR-MED	PREPARED BY: Brandon Ferguson FBAN-t

INPUTS

WEATHER SUMMARY:

*****See Fire Weather Summary*****

FUELS & FUEL MOISTURE:

- Mixed aged Douglas-fir and brush in the lower elevations.

Fine Fuels 5-8%, based on shading. 100hr (1"-3") 9%; 1000hr (3"+) 8%

OUTPUTS - FIRE BEHAVIOR

GENERAL:

Today: Expect continued moderate to active fire behavior today. Conditions will be very similar to behavior observed yesterday. Terrain will have more of an effect on any unchecked fire and will increase fire behavior as fuels allow. Short uphill runs are possible where wind and topography align, and may be observed within the interior of the fire today. Once again, be aware of fuel type changes and expect faster rates of spread in the brush and grass versus timber.

Fire Behavior based on worst case daytime predicted weather.

Fuel Type	<u>Low-Elevation ROS</u>	<u>Low-Elevation FL</u>	<u>Spotting Distance</u>	<u>Ridgetop ROS</u>	<u>Ridgetop FL</u>
Grass/Shrub (GS2)	30-35 Feet/Minute	4-6 Feet	Up to .4 Miles	50-55 Ft/Min	6-8 Feet
Timber w/ Understory (TU5)	10-15 Feet/Minute	7-9 Feet	Up to .4 Miles	15-20 Ft/Min	9-11 Feet
Brush (FM5)	30-40 Feet/Minute	6-8 Feet	Up to .4 Miles	60-65 Ft/Min	8-10 Feet

Probability of Ignition (PIG): 50-70% during the peak of the burning period.

SPECIFIC:

South Side: Terrain and wind alignments will provide for the most active areas of fire spread. Main fire spread will be south/southeast. Expect spread to continue toward Chimney Rock Butte if allowed. Ramsey Canyon is well aligned to forecast wind direction. Any unchecked fire line has potential to spread down canyon. Primary activity will be on the interior as small islands of fuel continue to burn.

Lower elevations of the fire will still be partially sheltered from the northwest winds by Hull Mountain. If the fire spreads to the Southeast into meadows, expect prevailing/gusty winds to help push the fire towards Cinnabar Mountain.

North Side: The fire will continue to back down Hull Mountain to the north and east. Expect rollout to be a problem, and subsequent uphill runs where fuels and slopes align. Isolated single tree torching can still be observed within the interior of the fire. Identifying any spotting across Evans Creek, and to the Northeast could be a more of a problem with the lighter winds.

AIR OPERATIONS: Valley inversions and smoke will be observed in the morning. Air operations may be hindered along the Northern portions of the fire due to smoke until the smoke clears.

SAFETY: Fire aligned with wind and slope will produce the most active fire behavior.

****Base all action on current and expected fire behavior****

MEDICAL PLAN	1. INCIDENT NAME	2. DATE PREPARED	3. TIME PREPARED	4. OPERATIONAL PERIOD
	Ramsey Canyon Fire	08/25/18	1730	Day

5. INCIDENT MEDICAL AID STATIONS				
MEDICAL AID STATIONS	LOCATION	PARAMEDICS		
		YES	NO	
Ramsey Canyon Fire Camp	Ramsey Canyon Fire Camp	X		
Med Transport	Meadows Staging	X		

6. TRANSPORTATION				
A. Air Ambulances				
NAME	ADDRESS	PHONE	PARAMEDICS	
			YES	NO
Mercy Flights- Medford	BO-105	911	X	
Mercy Flights- Medford	Fixed Wing	911	X	
B. Ground Ambulances				
Mercy Flights	Jackson County	911	X	
Rogue River Fire	Jackson County	911	X	

7. HOSPITALS								
NAME	ADDRESS	TRAVEL TIME		PHONE	HELIPAD		BURN CENTER	
		AIR	GRND		YES	NO	YES	NO
Rogue Regional	2825 Barnett Road, Medford Lat. 42 19 03 Long. 122 49 27			541-787-7000	X			X
Providence	1111 Crater Lake Ave, Medford Lat. 42 20 22 Long. 122 51 32			541-732-5000	X			X
Three Rivers	500 SW Ramsey Ave, Grants Pass Lat. 42 25 13 Long. 123 20 35			541-472-7000		X		X
Burn Center- Emmanuel	Portland, OR			800-222-1222	X		X	

8. MEDICAL EMERGENCY PROCEDURES	
<p>1. LINE EMERGENCY: Crew Supervisor to contact Division Supervisor with patient complaint/condition and location.</p> <ul style="list-style-type: none"> Division Supervisor contacts: <ul style="list-style-type: none"> Line EMT / PM Communications Unit Communication Unit will clear command channel for emergency traffic Communications Unit contacts: <ul style="list-style-type: none"> Medical Unit Safety Operations Division Supervisor will run medical emergency on command channel Medical Unit will: <ol style="list-style-type: none"> Dispatch ground ambulance to nearest drop-point for ground transport only. Or after patient pickup, dispatch ambulance to Helibase for Medical AIR EVAC Flight if needed Notify receiving hospital of injury status. <p>1. CAMP EMERGENCY: Contact Medical Unit with patient complaint/condition and location. Medical Staff will respond to stabilize incident:</p> <ul style="list-style-type: none"> Medical Unit contacts: <ol style="list-style-type: none"> Communications Safety Logistics Operations Crew Supervisor <p>7. INCIDENT COMMUNICATIONS:</p> <ul style="list-style-type: none"> Command: Channel 9 & 10 Air to Ground: Channel 7 	<p style="text-align: center;">INJURY REPORTING PROCEDURES</p> <p>2. EMERGENCY IC _____</p> <p>IS AN EMT WITH PATIENT: YES ____ NO ____</p> <p>IS A PARAMEDIC WITH PATIENT: YES ____ NO ____</p> <p>3. NATURE OF INJURY _____</p> <p>AGE ____ WEIGHT ____ SEX: MALE ____ FEMALE ____</p> <p>CONSCIOUS? YES ____ NO ____ BREATHING? YES ____ NO ____</p> <p>PATIENT UNIT ID _____</p> <p style="text-align: center;"><small>REMINDER: DO NOT GIVE PT NAME OVER RADIO</small></p> <p>4. ____RED-URGENT__ YELLOW-PRIORITY __ GREEN-ROUTINE</p> <p>5. TRANSPORTATION REQUESTED BY: AIR ____ GROUND ____</p> <p>6. ADDITIONAL NEEDS _____</p> <p>8. LOCATION OF PATIENT _____</p> <p style="text-align: center;"><small>Division, closest DP</small></p> <p>POINT OF PICKUP _____</p> <p>LAT _____ LONG _____</p> <p>9. CONTINGENCY _____</p>

ICS 206 5-17	9. PREPARED BY (MEDICAL UNIT LEADER) Raymond Watkins	10. REVIEWED BY (SAFETY OFFICER) Scott West/Darren Bucich
--------------	---	--

Incident Ramsey Canyon Fire	Date: August 26, 2018	Shifts: Day
---------------------------------------	---------------------------------	-----------------------



SAFETY MESSAGE

SAFETY IS OUR FIRST PRIORITY

Fire fighter safety comes first on every fire, every time



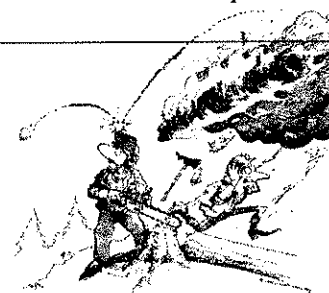
LCES FIREFIGHTERS CODE OF CONDUCT INCIDENT RESPONSE POCKET GUIDE WORK-REST GUIDELINES

SAFETY THOUGHT

Head on collisions are the most violent type of vehicle accident. Read the road ahead. Reduce speed. Drive to the right. Ride off the road if necessary.



Wash-Up Before You Chew-Down!
Safety & Health Working Team



13. ON A HILLSIDE WHERE ROLLING MATERIAL CAN IGNITE FUEL BELOW

MAJOR HAZARDS AND RISKS

<ul style="list-style-type: none"> • Snags • Steep slopes • Powerline through Fire Area 	<ul style="list-style-type: none"> • Driving • Public in the Area of the Fire • Area of urban interface 	<ul style="list-style-type: none"> • Poison Oak • Bees, spiders, and critters that bite • Communications
--	--	---

Bees

Bees starting to bee a problem on the Ramsey Canyon Fire: It's that time year when bees and wasps become more active and aggressive, and conditions aren't helping things.

- Determine who has known allergic reactions to stings and who carries epi.
- Identify and flag areas with hives.
- Remember that little things can attract bees during dry conditions: water in handwashing basins in camp, beverage bottles sitting on tailgates, lunch items left open, Gatorade dumped on the ground... Do your part to reduce the attractants!
- Let your supervisor know if you've been stung so that you can be monitored for possible reactions.



Recognize And Report the Danger!

REGIONAL SAFETY AND HEALTH LEADERSHIP TEAM

Safety Officers: Scott West, Darren Bucich



Safety Analysis of Tactical Actions (215A)

Incident Name: Ramsey Canyon Fire				Date and Time Prepared: 8/25/2018 1900				Operational Period: Day 0600 - 1800			
TACTICAL HAZARDS	Branch I			Branch II			Branch III			LCES MITIGATION	
	A	D	H	K	N						
Indirect Fireline										Establish LCES. Insure that communications between lookouts and line resources are maintained. Escape Routes are identified and reevaluated continuously.	
Downhill Fireline										Follow downhill line standards. Bring fire with you. Insure lookout can see entire area. Identify safety zones and escape routes before starting work. Use page 9 of Incident Response Pocket Guide 2018. Establish LCES.	
Underslung Fireline										Cup trench. Post lookout that can see all areas of under slung line. Establish LCES.	
Mid-Slope Fireline										Insure that lookouts can see ALL area of mid slope line as well as areas upslope of mid slope line. Establish Trigger Points and reassess as fire or weather conditions change. Establish LCES.	
Frontal Assault										Identify thresholds for reassessment. Establish LCES.	
No Anchor Points										Find/construct safe, effective anchor before engaging. Establish LCES.	
Extreme Conditions (Spotting, Wind)										High potential given because of low live fuel moisture and high probability of ignition. Anticipate. Identify thresholds for reassessment, monitor weather. Establish LCES.	
Heavy Equipment	X	X			X	X				Do not work down slope below heavy equipment. Establish communications with operator. Post lookout for rolling debris. Be aware of loose soil and rock. Establish LCES.	
Air Operations Multi Aircraft	X	X	X		X	X				Insure that all personnel are at least 500 feet from bucket or retardant drops. Utilize air attack. Establish LCES.	
Hazard Trees/Snags	X	X	X		X	X				Assess, Identify, Communicate, Isolate, Mitigate. Establish LCES.	
Hazardous Materials	X	X	X							Utilize the Incident Response Pocket Guide. Identify and isolate any suspected hazardous materials. Notify supervisor and warn others in area. Keep your distance. Establish LCES.	
Unburned Area Unknown Fires	X	X	X			X				High potential for re-burn in brush and corners preheated by earlier burn. Blowdown areas keep a close eye on. Post lookouts. Watch for increase in burn activity. Monitor weather for change in RH and or wind conditions. Establish LCES.	
Transportation	X	X	X		X	X				Drive defensively with headlights on, seatbelts fastened. Stay to the right side of the road. Yield to downhill traffic and flaggers. Drive slowly and watch out for the other person. Establish LCES.	
Communication										Establish LCES. Insure that communications between lookouts and line resources are maintained. Escape Routes are identified and reevaluated continuously.	
Steep Terrain Gravity Hazards	X	X				X				Do not work crews above or below each other. Post lookouts for rolling material. Watch footing in loose or wet soil and rock. Do not work below heavy equipment. Establish LCES.	
Environmental Hazards	X	X	X		X	X				Bees, and other animals are in the area. Carry medical kits for those with allergic reactions, do not harass or instigate any confrontations with animals, warn others of presence. Poison Oak - Preventative measures, locate, isolate, mitigate, communicate	
Structures	X	X	X							Follow page(s) 13-16 of Incident Pocket Response Guide 2018. Establish LCES.	
Transfer of Command										Make sure you understand your assignment. Know who your supervisor is and who is working for you. Do not assume. Re-brief all resources.	
Span of Control										Adhere to Span of Control Guidelines-5:1. Ensure Overhead is sufficient for operation and identify chain of command. Ensure everyone receives a briefing. Retain control at all times.	
Falling Operations	X		X		X	X				Post road guards. Have a falling boss who can be in contact with crews working in the area. Use qualified Fallers.	
Power Lines	X	X	X		X	X				Watch for down power lines and poles. Identify, isolate and report. Notify supervisor and warn others in area. Keep your distance.	
I.A. / Staging	X	X	X		X	X				Follow the 10 and 18, LCES - before engaging, re-evaluate for each new start!	
Public	X	X	X		X	X				Identify, Establish communication with public, Notify Supervisor, Mitigate risk to Public.	

Operations Section Chiefs: John Pellissier/Chris Barney	Date / Time: 8/25/18 1900	Safety Officers: Scott West/Darren Bucich	Date / Time: 08/25/18 - 1900
---	-------------------------------------	---	--



Incident Management Team: Incident Within An Incident Plan

The primary goal of this Plan is to allow incident personnel the guidelines necessary to *Locate, Triage, Extricate, Treat and Transport* all accident patients in as quick and safe a manner as possible. **The Division/Group Supervisor will initially oversee the emergency and activation of the Plan.** Radio communication will be on the "Command Frequency" and will take priority over all other radio traffic. **All Command and General Staff will be notified by the Safety Officer of what level (Green, Yellow or Red) the Incident is.**

G	Y	R	INCIDENT COMMANDER
			Ensures the Incident Within an Incident Plan is implemented
			Notifies Agency Administrator(s), Geographic Coordination Center, Salem Coordination Center, Salem Safety.
			Orders Investigator or Investigation Team
G	Y	R	OPERATIONS SECTION CHIEF
			Coordinate and support the Safety Officer's investigation and involved Law Enforcement agencies.
			Coordinate with Safety for ground ambulance transport, medical supplies and other medical needs.
G	Y	R	AVIATION EMERGENCIES:
			Air Attack, Air Operations Branch Director coordinate, as appropriate. OSC and IMT provide Support.
			Implement ODF Aviation Mishap Response Guide and Checklist & Heli-Base Emergency Plan, as appropriate.
			Coordinate with Air Operations Branch Director for notification to appropriate agencies.
G	Y	R	DIVISION/GROUP SUPERVISOR
			Will respond directly to the accident/incident scene and assume command until relieved, or clearly designate another capable person to be responsible, on your behalf.
			Remain aware of surroundings. Delegate Division/Group oversight to other qualified personnel, as needed.
			Size-up the Incident (Nature of Accident, Number/Type of Resources, Location, Safety for Incoming Personnel)
			Coordinate "Line EMT" response to the accident (Utilize Closest EMT's).
			Identify Location and Lat/Long coordinates of site.
			Identify Medical treatment and transportation needs.
			Begin "TRIAGE" (PINK pages of the Incident Response Pocket Guide – IRPG)
			Determine and initiate treatment and transportation needs.
			Evaluate special needs (Law Enforcement, Heavy Rescue, Haz Mat, fire protection or suppression)
			Coordinate with Air Attack for Air-Medical transportation needs
			Notify OSC and SOF of all accidents/incidents.
			Preserve the scene for accident investigation and begin documentation.
G	Y	R	SAFETY OFFICER
			Maintain Overall Incident Safety. Provide coordination between the incident and other IMT sections and units.
			Implement the Incident Within an Incident Plan for all incidents, providing coordination between the on- scene Division/Group and other IMT sections and units.
			Ensure appropriate incident organization.
			Coordinate and oversees line EMT& Paramedic response to the accident site.
			Provide for immediate extrication and medical triage, treatment and transportation.
			Request a Size-up of the situation. Number of people involved and their medical condition (Triage). Nature of the incident (auto/aircraft accident, burn over, etc.) and number of crews, vehicles or aircraft involved.
			Coordinate with Air Operations Branch Director for Air-Medical transportation needs.
			Ensure air/ground ambulances coordinate patient transportation locations with the Medical Unit Leader
			Identify special needs, i.e. Law Enforcement, Heavy Rescue, and Haz Mat response.
			Evaluate safety issues at all accident/incident sites and work with Division/Group Supervisor in charge to mitigate them.
			Initiate the investigation of the emergency and coordinate with the IC to request the appropriate investigation resources/teams.
			Secure witness names, initial statements and all evidence relating to the accident.
			Coordinate with the Logistics Section for on scene support and location of receiving hospitals for patients.
			Coordinate investigation with comps/claims unit.
			Obtain sketches and photos of emergency scene.
			Assist Medical Unit Leader with communications with the hospital and ambulance service.

G	Y	R	LIAISON
			Assist the Medical Unit Leader as needed
			Insure coordination with investigating entities
			Assist other positions as needed
			Coordinate with cooperators and key stakeholders
G	Y	R	INFORMATION OFFICER
			Collect pertinent emergency information.
			Coordinate information release with Incident Commander and Agency Public Affairs Officer.
			Assign Information Officer(s) to field media inquiries at accident scene, med-evac area and hospital.
			Coordinate with Liaison and Safety Officer regarding roadblocks, evacuations and emergency medical information needs.
			No personal information shall be released until approved by Incident Commander. Coordinate with local Agency.
			Coordinate with employee's home unit.
G	Y	R	PLANNING SECTION CHIEF
			Complete the 209 and coordinate with IIO to include accident information and status in the daily morning fire update report sent to Salem Coordination Center.
			Coordinate Critical Incident Stress Debriefing for effected personnel.
			Provide and coordinate a Family Liaison with supporting agencies, (Home Unit, Red Cross, 100 Club, Chaplin)
			Provide Briefing at ICP for Incident Personnel
			Ensure all communications regarding the accident and actions are well-documented.
G	Y	R	LOGISTICS SECTION CHIEF
			Assume command and implement Incident Within Incident Plan for incidents within the ICP or Camp in absence of SOF
			Ensure maintenance of accurate radio logs, use the Injury Communications Protocol Form (Logistics Manual Appendix I – 10) until the emergency has terminated. Ensure Safety Officer receives copies in a timely manner.
			Establish emergency radio communications, on a different frequency, if requested by scene IC.
			Provide ground or air transportation, depending upon need. Coordinate with Air Operations Branch Director.
			Order needed resources for the emergency
			Monitor support functions and assess additional needs.
			Coordinate removal of damaged vehicles.
			Coordinate Security with Team Liaison and Operations Section Chief as necessary.
			Locate and secure personal effects of injured personnel.
G	Y	R	FINANCE SECTION CHIEF
			Coordinate with Agency Administrative Officer(s) and Agency Risk Manager.
			Coordinate Compensation/Claims Unit response (Risk Management Forms).
			Notify Home Unit or Office of injured person(s). (Agency or Contractor)



BURN INJURY PLAN

Oregon Department of Forestry employees deserve the highest standard of burn care management when injured in the performance of their duties.

Burns will be classified as either Minor or Serious. Treatment, transportation, and follow-up specialty care will be based upon the severity of the burn classification. Burns will be classified by the established Medical Unit on project fires. Unit Supervisors will classify burns received in any other situation. Do not delay medical treatment for Medical Unit or Unit Supervisor classification in emergency situations.

Minor Burns

Superficial (first degree) burns involving less than 10% of body surface area that **does not** involve face, hands, feet, genitalia, joint areas, chemical burns, or burns with potential of respiratory complication.

The injured person in conjunction with the Medical Unit or Unit Supervisor will make treatment and transportation decisions for Minor Burns. Minor Burns requiring medical attention will be evaluated at a qualified hospital offering full service emergency care. Urgent care facilities and clinics are not an acceptable source for evaluation and treatment of burn injuries.

NOTE: All burns resulting from fire entrapments, direct flame contact, or superheated gases will be treated as a Serious Burn.

Serious Burns

Burns involving more than 10% of body surface area or burns of the face, hands, feet, genitalia, joint areas, chemical burns, or burns with potential of respiratory complication.

All serious burns will be transported to the closest appropriate medical facility for initial evaluation and stabilization. After stabilization, patients with serious burns will be transported to a qualified regional burn center as soon as possible for evaluation, treatment, and follow-up.

The Incident Commander, Unit Supervisor or designee has the discretion to request that burn injuries, regardless of their apparent severity, be evaluated at a qualified regional burn center. The Incident Commander, Unit Supervisor or designee will assign a representative to maintain contact with the injured employee throughout their care.

REGIONAL BURN CENTERS

OREGON, Portland
Oregon Burn Center
Legacy Emanuel Hospital
2801 N. Gantenbein Ave
Portland, OR 97227
(503) 413-4232

WASHINGTON, Seattle
University of Washington Burn Center
Harborview Medical Center
325 Ninth Avenue
Seattle, WA 98104
(206) 744-3000

CALIFORNIA, Sacramento
Davis Regional Burn Center
University of California
2315 Stockton Boulevard
Sacramento, CA 95817
(916) 734-3636

ODF Ramsey Canyon Fire

MOP UP STANDARDS

August 24th, 2018

Objective: The Ramsey Canyon Fire shall be mopped-up to a standard which the likelihood of the fire escaping the containment lines unlikely. The standards below can be flexible and should be applied based on physical conditions present, considerations for firefighter safety, and the expertise of the Incident Management Team (IMT) as long as the objective is achieved. These standards apply to all lands within the fire perimeter.

- Grid the green out to 300 feet from the fire perimeter for two burning periods
- Mop up 100% into hard black a minimum of 300 feet
- Mop up 100% all spot fires, in addition, a route to them will be flagged and the perimeter mapped in GIS
- Line unburned islands and drainages within 300 feet of the perimeter if they are not within the designated mop up area
- Mop up to 300 feet into hard black any dirty burn areas and areas of higher fuel concentrations. The decision to mop up this far into the fire will be based on the expertise of the IMT which is to consider fuels, aspect, wind exposure and firefighter safety
- Heat detecting equipment will be used to detect for hot spots within 300 feet of the perimeter including spot fires
- Complete felling of all snags and fire damaged trees that have been identified as a safety concern, have the potential to cause spotting outside control lines or is within 300 feet of major travel corridors and structures.

I Work With Others By:

Recognizing the Strength
of the Diversity in Myself
and Others

*Alone we can do so
little, together we
can do so much –
Helen Keller*



CAMP HOURS

SHOWERS

El Dorado Shower

0500 – 1200

1400 – 2300

ODF SHOWERS

0700 – 2300

KITCHEN

0500 – 0930

1700 – 2130

TIME UNIT / CHECK IN

0530 – 0930

CACHE

0530 - 2300

Ramsey Canyon Fire Information

(541) 238-5348 (8am—8pm)

<https://inciweb.nwcg.gov/incident/6167/>

email: RamseyCanyonFireInfo@gmail.com

**For Information on area fires call the
Joint Information Center**

(541) 474-5305 (7am-8pm)

Ramsey Canyon Camp Map

Ramsey Canyon
11 Peninger Rd
Central Point, OR 97502

Parking

ICP

Gate 2

Exit
Gate 1 1/2

Parking

Cache

OSFM
Overhead

Engines

Parking

Crew
Camping

Parking

Crew
Camping

Briefing

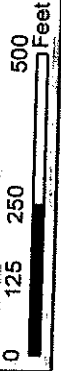
Ground
Support

Kitchen

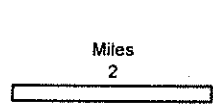
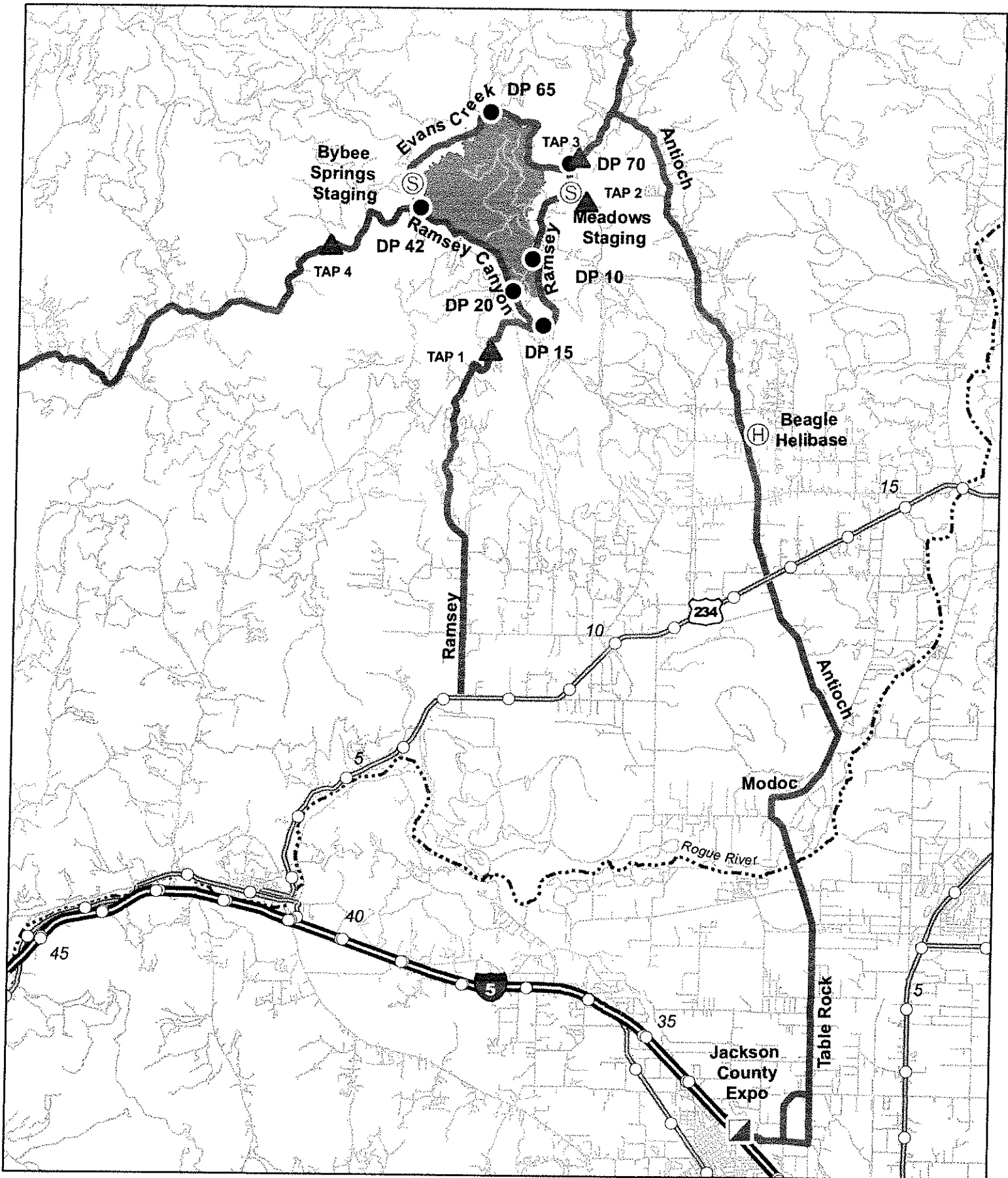
Shower

Entrance
Gate 1

Peninger Rd.



08/25/2018



- Drop Point
- ⊙ Helibase
- ⊙ Staging Area
- ▲ Traffic Assistance Points
- ▣ Incident Command Post
- ⊙ Staging Area
- ▬ I 5
- ▬ Incident Access Route
- - - - - Rogue River

TRANSPORTATION
Ramsey Canyon
 OR 711S-032519
 August 25, 2018
 NAD 83

MEDICAL EMERGENCY PROCEDURES

1. LINE EMERGENCY: Crew Supervisor to contact Division Supervisor with patient complaint/condition and location.

- Division Supervisor contacts:
 - Line EMT / PM
 - Communications Unit
- Communication Unit will clear command channel for emergency traffic
- Communications Unit contacts:
 - Medical Unit
 - Safety
 - Operations
- Division Supervisor will run medical emergency on command channel
- Medical Unit will:
 1. Dispatch ground ambulance to nearest drop-point for ground transport only.
 2. Or after patient pickup, dispatch ambulance to Heli-base for Medical AIR EVAC Flight if needed
 3. Notify receiving hospital of injury status.

INJURY REPORTING PROCEDURES

2. EMERGENCY IC _____

IS AN EMT WITH PATIENT: YES ____ NO ____

IS A PARAMEDIC WITH PATIENT: YES ____ NO ____

3. NATURE OF INJURY _____

AGE ____ WEIGHT _____ SEX: MALE ____ FEMALE ____

CONSCIOUS? YES ____ NO ____ BREATHING? YES ____ NO ____

PATIENT UNIT ID _____

REMINDER: DO NOT GIVE PT NAME OVER RADIO

4. RED / PRIORITY 1 Life or limb threatening injury or illness. Evacuation need is IMMEDIATE

Ex: Unconscious, difficulty breathing, bleeding severely, 2o – 3o burns more than 4 palm sizes, heat stroke, disoriented.

YELLOW / PRIORITY 2 Serious Injury or illness. Evacuation may be DELAYED if necessary.

Ex: Significant trauma, unable to walk, 2o – 3o burns not more than 1-3 palm sizes.

GREEN / PRIORITY 3 Minor Injury or illness. Non-Emergency transport

Ex: Sprains, strains, minor heat-related illness.

5. TRANSPORTATION REQUESTED BY: AIR ____ GROUND ____

6. ADDITIONAL NEEDS _____

7. INCIDENT COMMUNICATIONS:

- Command: Channel 9 & 10
- Air to Ground: Channel 7

8. LOCATION OF PATIENT _____

Division, closest DP

POINT OF PICKUP _____

LAT _____ LONG _____

9. CONTINGENCY _____