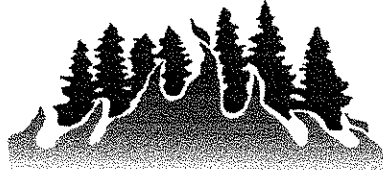


OREGON DEPARTMENT OF FORESTRY



INCIDENT MANAGEMENT TEAM

RAMSEY CANYON FIRE

INCIDENT ACTION PLAN

Day Shift

Monday, August 27, 2018

0600-1800

Incident Order Number

OR-711S-325-19

Incident Fire Number

711325-19



ICS-202 INCIDENT OBJECTIVES

1. Incident Name

Ramsey Canyon Fire

2. Date Prepared

08/26/2018

3. Time Prepared

2100

4. Operational Period

DAY SHIFT

Monday

August 27, 2018

0600-1800

Incident Objectives

- Provide for the safety of firefighters and the public through deliberate risk management, implementation of appropriate mitigations and clear understanding of assignments.
- Protect private lands, communities, timber, infrastructure and other values at risk by minimizing the size of the fire.
- Provide initial attack within the designated response area and support local IA efforts.
- Develop and deliver accurate and timely fire information to landowners, the public, and cooperators, through the use of personal contacts, social media, public meetings, and web-sites as needed.
- Be fiscally responsible by continuing to evaluate incident needs and make appropriate adjustments.
- Treat all personnel, landowners, cooperators and the public with dignity and respect. Promote a positive and harassment free work environment.
- Provide for the protection of natural and cultural resources during suppression and suppression repair activities, by working in consultation with Resource Advisors and following the special instructions as detailed in the ICS204 for each Division.

Operational Objectives

- Utilize strategies and tactics that will minimize acres burned and complete mop-up to ensure fire stays within current control lines.
- Implement suppression tactics in coordination with Resource Advisors on BLM lands to minimize impacts to resource values, threatened and endangered species, and cultural sites.

6. Weather Forecast for Period

See attached weather forecast.

7. General Safety Message

See attached safety message.

8. Attachments (mark if attached)

Organization List - ICS 203

Fire Weather Forecast

Incident Map

Div. Assignment Lists - ICS 204

Fire Behavior Forecast

Suppression Repair

Communications Plan - ICS 205

Air Operations Summary - ICS 220

Traffic Plan

Medical Plan - ICS 206

Safety Message

9. Prepared by

Ron Zill

10. Approved by

Kevin Havel

ICS-203 Organizational Assignment List

Ramsey Canyon Fire

2. DATE PREPARED

08/26/2018

3. TIME PREPARED

1300

DAY SHIFT

Monday

August 27, 2018

0600-1800

Position	Name
5. Incident Commander & Staff	
Incident Commander	Hessel, Joe
Deputy	Smith, Greg
Safety Officer	West, Scott
Public Information Officer	Lertora, Ashley
Liaison Officer	Goff, Larry

Agency	Name
6. Agency Representatives	
ODF	Larson, Dave
ODF (deputy)	Winslow, Lee
BLM	Trulock, Teresa / Teitzel, Dennis
BLM READ	McDaniel, Nick / Engleson, Leo
Jackson County Sheriff	Kennedy, Rick
Jackson County Deputy	Valentino, Daryl
Jackson/Josephine Co. EM	Rubricht, Sara
Hancock	Cummings, Ken
Murphy	Groves, Jake
Weyerhaeuser	Bradac, Brian
Lone Rock	Erickson, Dave
Cow Creek Tribe	DePew, Tracy / Coates, Kelly

	Name
7. Planning Section	
Chief	Ennenga, Jeff
Plans Assistant	Bangs, Cullen
Resources Unit	Kiser, Colleen / Zilli, Ron (t)
Situation Unit	Moore, Barbara
GISS	Nile, Emmor
FBAN	Stampfly, Jeff / Ferguson, Brandon (t)
IMET	Murdoch, Greg

8. Logistics Section	
Chief	Hiatt, Malcolm
Assistant	McBride, Matt
Support Branch	
Director	Rudd, Chris
Supply Unit	Hepler, Jeff
Ordering Manager	Benda, Barb / Martinmass, Freedom
Ground Support Unit	Thompson, Dave
Communications Unit	Dwire, LeRoy
Service Branch	
Director	Sleight, Dawn
Food Unit	DeLong, Vicki

Position	Name
9. Operations Section	
Chief	Pellissier, John
Chief	Tillotson, John (t)

Division/Group		Name
9a. Branch I Divisions/Groups		
Branch Director		
Division/Group	A	Flock, Matt/Fitch, Jon (t)
Division/Group	D	Arbogast, Tyler
Division/Group	H	Waldron, Keith
Division/Group	K	Coley, Glen / Witz, Karl (IA)
Division/Group	N	Williams, Mitch
Staging Area Manager		

9b. Branch II Divisions/Groups		
Branch Director		
Deputy		
Division/Group		
Division/Group		
Division/Group		
Division/Group		
Staging Area Manager		

9c. Structural Branch		
Branch Director		
Deputy		
Division/Group		
Division/Group		
Division/Group		
Staging Area Manager		

9d. Air Operations		
Branch Director		Laugle, Neal
Air Attack Supervisor		Leach, Mike

10. Finance Section		
Chief		Larson, Rachael
Procurement		Dehut, Keith
Time Unit		Simonton, Karen

Prepared By: *Ronzille* 8/26/18

Approved By: *[Signature]* *[Signature]*

ICS-204 Division Assignment List

3. Incident Name Ramsey Canyon Fire	1. Branch I	2. Division/Group A
DAY SHIFT	Monday	August 27, 2018
0600-1800		

5. Operations Personnel

Operations Chief	Pellissier, John/ Tillotson, John (t)	Division/Group Supervisor	Flock, Matt / Fitch, Jon (t)
Safety Officer	West, Scott	Air Attack Supervisor	Leach, Mike

6. Resources Assigned this Period

Strike Team/Task Force Resource Designator	Leader	Number Persons	14th Day	21st Day	30th Day	Comments
O-46 TFLD	Locke, Brian	1	9/5			
O-592 TFLD	McGuire-Dale, Alan	1	9/5			
O-37 TFLD (t)	Monteil, James	1				SEE CHECK IN
O-516 HEQB	Hoggard, Bryan	1	9/2			
O-1 FMOD Cowboy Fire	Lackler / Smith	2				SEE CHECK IN
O-567 FMOD Jesse Wilson	Wright / Wilson	2	9/6			
C-514 HC2IA SRV	Kenick, James	20	9/3			
C-11 HC2 Lava River	Ceja, Javier	20				SEE CHECK IN
C-12 HC2 JC Orozco	Orozco, Chris	20	9/5			
C-507 HC2 Franco	Rojas, Ignacio	20	8/27			
C-508 HC2 R Franco	Castro, Armando	20	8/27			
E-539 ENG4 Pacific Coast	Wilson, Dean	2	9/7			
E-544 ENG4 Firestormer	Harter, James	3	9/7			
E-545 ENG4 Diamond Fire	Voss, Rudy	2	9/7			
E-32 ENG5 Mike Wonsyld Logging	Wonsyld, Brent	2				SEE CHECK IN
E-17 ENG6 Ben Taylor	Williams, Dakota	3				Double Shift - SEE CHECK IN
E-35 ENG6 Wimer Excavation	Bracher, Shane	3				SEE CHECK IN
E-547 ENG6 Leonard Osburn	Gillette, Keith	3	9/7			
E-37 WAT2 Valley Fire Rural Metro	Berrettii, Randy	1	9/5			SEE CHECK IN
E-521 WAT2 Fire Sail	Mitchell, Brett	1	9/5			SEE CHECK IN
E-9 DOZ3 D3 Central Pipeline	Gartin, Cody	1				Double Shift - SEE CHECK IN
E-527 MAST Davis Corps	McGoughlin, Corey	2	9/5			w/ E-530 lowboy
SWO Taskforce	Keene, Jesse	43				
National Guard TAP6	Traffic Control Point #4					

7. Control Operations

Fall hazard trees to mitigate threats during holding and mop-up actions.
Hold and begin mop up operations.
Mop up 100 feet from perimeter.

8. Special Instructions

Back haul any garbage and excess equipment.
Be careful not to disturb cultural resources or artifacts. If any artifacts are spotted do not touch or remove them. Report the location (with a picture if possible) to your Division Supervisor to forward to the Liaison Officer.

9. Division/Group Communication Summary

Function	Frequency	Tone	Channel	Function	Frequency	Tone	Channel
Command RX	151.445	146.2	9	Logistics			
TX	158.895						
Tactical Div/Group	151.235	156.7	1	Air to Ground	151.475	156.7	7

Prepared by: *Ron Zill* Resource Unit Leader 8/26/18 Approved by: *[Signature]* Plans Section Chief

ICS-204 Division Assignment List

3. Incident Name Ramsey Canyon Fire	1. Branch I	2. Division/Group D
DAY SHIFT	Monday	August 27, 2018
0600-1800		

5. Operations Personnel

Operations Chief	Pellissier, John/ Tillotson, John (t)	Division/Group Supervisor	Arbogast, Tyler
Safety Officer	West, Scott	Air Attack Supervisor	Leach, Mike

6. Resources Assigned this Period

Strike Team/Task Force Resource Designator	Leader	Number Persons	14th Day	21st Day	30th Day	Comments
O-19 TFLD	Stratton, Hunter	1	9/5			
O-39 TFLD	Jones, Frank	1	9/5			
O-20 HEQB	Altheide, Crystal	1	9/6			
O-514 HEQB	Wicker, Lee	1	9/5			
O-2 FMOD Wapati Forestry	Syfert / Combe	2				SEE CHECK IN
C-513 HC2IA Florida Crew 3	Sechrist, David	20				SEE CHECK IN
C-7 HC2 North Reforestation	Rincon, Gerodo	20	9/5			
C-8 HC2 Franco Reforestation	Franco, Joshua	20	9/5			
C-517 HC2 Grayback	McIntyre, Scott	20	9/7			
C-518 HC2 First Strike	Reich, Jim	19	9/7			
E-540 ENG4 Fanco	Pickering, Jamie	3	9/7			
E-541 ENG4 J3 Contracting	Thomas, Michael	3	9/7			
E-542 ENG5 Chewack Wildfire	Reinbold, Tim	3	9/7			
E-12 ENG6 Big Elk	Call, Brandon	3	9/4			Double Shift
E-8 DOZ2 Roger's Contracting	Low, Skip	1	9/4			SEE CHECK IN
E-13 DOZ2 BBC Construction	Burks, Danny	1				
E-525 DOZ2 Brierville	Parker, Richard	2	9/3			w/ E-526 lowboy
National Guard TAP 6	Traffic Control Point #3					

7. Control Operations

Fall hazard trees to mitigate threats during holding and mop-up actions.
 Hold and begin mop up operations.
 Mop up 100 feet from perimeter.

8. Special Instructions

Back haul any garbage and excess equipment.
 Be careful not to disturb cultural resources or artifacts. If any artifacts are spotted do not touch or remove them. Report the location (with a picture if possible) to your Division Supervisor to forward to the Liaison Officer.

9. Division/Group Communication Summary

Function	Frequency	Tone	Channel	Function	Frequency	Tone	Channel
Command RX	151.430	146.2	10	Logistics			
TX	159.450						
Tactical Div/Group	151.250	156.7	2	Air to Ground	151.475	156.7	7

Prepared by: *Ron Zill* Resource Unit Leader Approved by: *[Signature]* Plans Section Chief
 Date: *8/26/18*

ICS-204 Division Assignment List

3. Incident Name Ramsey Canyon Fire	1. Branch I	2. Division/Group H
DAY SHIFT	Monday	August 27, 2018
0600-1800		

5. Operations Personnel

Operations Chief	Pellissier, John/ Tillotson, John (t)	Division/Group Supervisor	Waldron, Keith
Safety Officer	West, Scott	Air Attack Supervisor	Leach, Mike

6. Resources Assigned this Period

Strike Team/Task Force Resource Designator	Leader	Number Persons	14th Day	21st Day	30th Day	Comments
O-42 TFLD	VanDenabeele, David	1	9/5			
O-43 TFLD	Evans, Brett	1	9/5			
O-16 FMOD Roger's Contract Cutting	Brown/Smith	2	9/4			
C-503 HC2 Oregon Woods	Watkins, Chuck	20	9/6			
*C-504 HC2 Dustbusters #2	Jurasevich, Braton	20	9/6			
C-509 HC2 Tom Ferry	Segal, Glen	20	9/7			
E-536 ENG4 All Phase Electric	Harrison, Lonnie	3	9/7			
E-553 ENG4 AAA Thunderbolt	Mortimore, Brock	3	9/7			
*E-517 ENG6 West Coast	Gatchell, Eric	3	9/5			
*E-518 ENG6 West Coast	Webinger, Dusty	3	9/6			
*E-1 WAT2 Johnston Water	Johnston, Nathan	1	9/4			Double Shift
E-15 WAT1 Table Rock	Okey, Albert	1	9/5			Double Shift
E-566 WAT2 Cherokee Const	Bonney, Tom	1	9/7			Double Shift
National Guard TAP 6	Traffic Control Point #2					

7. Control Operations

Fall hazard trees to mitigate threats during holding and mop-up actions.
 Hold and begin mop up operations.
 Mop up 100 feet from perimeter.
 Identify and be prepared to provide Initial Attack resources if requested.

8. Special Instructions

*Indicates IA resource. Initial Attack designated resources be prepared to respond within 10 minutes.
 Initial Attack resources ensure that the Initial Attack communications plan is understood.
 Back haul any garbage and excess equipment.
 Be careful not to disturb cultural resources or artifacts. If any artifacts are spotted do not touch or remove them. Report the location (with a picture if possible) to your Division Supervisor to forward to the Liaison Officer.

9. Division/Group Communication Summary

Function	Frequency	Tone	Channel	Function	Frequency	Tone	Channel
Command RX	151.430	146.2	10	Logistics			
TX	159.450						
Tactical Div/Group	151.355	156.7	3	Air to Ground	151.475	156.7	7

Prepared by: *Ron Zill* Resource Unit Leader Approved by: *[Signature]* Plans Section Chief
 Date: *8/26/18*

ICS-204 Division Assignment List

3. Incident Name Ramsey Canyon Fire	1. Branch I	2. Division/Group K
DAY SHIFT	Monday	August 27, 2018
		0600-1800

5. Operations Personnel

Operations Chief	Pellissier, John/ Tillotson, John (t)	Division/Group Supervisor	Coley, Glen / Witz, Karl (IA*)
Safety Officer	West, Scott	Air Attack Supervisor	Leach, Mike

6. Resources Assigned this Period

Strike Team/Task Force Resource Designator	Leader	Number Persons	14th Day	21st Day	30th Day	Comments
*O-8 TFLD	Ripberger, Kyle	1	9/5			
O-600 TFLD	Pope, Jim	1	8/30			
O-7 TFLD(t)	Coons, Quincy	1				SEE CHECK IN
O-515 HEQB	Pittman, Paul	1	9/5			
O-583 FELB	White, Teiva	1	9/9			
O-15 FMOD Cook's Timber Falling	Hansen/Tungate	2	9/4			
*C-505 HC2 Dustbusters #1	Burchett, Silas	20	9/6			
C-506 HC2 PR Reforestation	Mendoza, Marco	20	9/5			SEE CHECK IN
C-510 HC2 Steelhead Enterprises	Rodriquez, Alejandro	20	9/8			
E-510 ENG4 Inbound	Tibbals, Jordan	3	9/7			
E-535 ENG4 Hi Country	Conger, John	3	9/8			
E-551 ENG4 Firestormers	Knipe, Matt	3	9/7			
E-549 ENG5 Allied Water	Cardinal, Phil	2	9/7			
*E-25 ENG6 Freeland Farm	Freeland, Greg	2	9/6			Double Shift
*E-516 ENG6 Central Wildfire	Wilson, Patrick	3	9/6			
E-543 ENG6 Aqua Fire	Callahan, Danny	3	9/7			SEE CHECK IN
E-554 ENG6 Tri-Co	Boren, Rich	3	9/7			
E-567 WAT3 Allied Water Service	Anderson, Josh	1	9/7			
E-5 DOZ2 Parker Excavation	Malachi, Parker	2	9/4			w/ E-39 lowboy - Double Shift - SEE CHECK IN
E-508 MAST Brierville	Ireland, Rick	1	9/3			
National Guard TAP 6	Traffic Control Point #1					

7. Control Operations

Locate and contain spot fires.
Identify and be prepared to provide Initial Attack resources if requested.
Fall hazard trees to mitigate threats during holding and mop-up actions.
Hold and begin mop up operations.
Mop up 100 feet from perimeter.

8. Special Instructions

*Indicates IA resource. Initial Attack designated resources be prepared to respond within 10 minutes.
Initial Attack resources ensure that the Initial Attack communications plan is understood.
Document location of spot fires with ribbon and gps coordinates.
Back haul any garbage and excess equipment.
Be careful not to disturb cultural resources or artifacts. If any artifacts are spotted do not touch or remove them. Report the location (with a picture if possible) to your Division Supervisor to forward to the Liaison Officer.

9. Division/Group Communication Summary

Function	Frequency	Tone	Channel	Function	Frequency	Tone	Channel
Command RX	151.430	146.2	10	Logistics			
TX	159.450						
Tactical Div/Group	151.415	156.7	5	Air to Ground	151.475	156.7	7

Prepared by: *Ron Zille* Resource Unit Leader Approved by: *[Signature]* Plans Section Chief

Date: *8/26/18*

ICS-204 Division Assignment List

3. Incident Name Ramsey Canyon Fire	1. Branch I	2. Division/Group N
DAY SHIFT	Monday	August 27, 2018
		0600-1800

5. Operations Personnel

Operations Chief	Pellissier, John/ Tillotson, John (t)	Division/Group Supervisor	Williams, Mitch
Safety Officer	West, Scott	Air Attack Supervisor	Leach, Mike

6. Resources Assigned this Period

Strike Team/Task Force Resource Designator	Leader	Number Persons	14th Day	21st Day	30th Day	Comments
O-36 TFLD	Peterson, Jana	1	9/5			
O-44 TFLD(t)	Korenegay, Anthony	1	9/5			
O-554 FELB	Michael, Dillon	1	8/28			
O-552 FMOD White's Tree Service	Ehlers/Ackley	2	9/6			
O-553 FMOD White's Tree Service	White/Douglas	2	9/6			
C-13 HC2IA Southwest City Crew	Chavarria, Joshua	21	9/8			
C-9 HC2 R&R Contracting	Rocha, Victor	20	9/5			
C-10 HC2 R&R Contracting	Ceja, Juan	20	9/6			SEE CHECK IN
C-511 HC2 CSR Enterprises	Katon, Remington	20	9/8			
E-31 ENG6 Wapati	Burroughs, Gary	2				SEE CHECK IN
E-33 ENG6 Rual Metro Fire	Coates, Eathan	2	9/5			
E-34 ENG6 JB Forestry	Garcia, Ivan	2	9/5			
E-511 ENG6 C&K Wildfire	Reese, Dave	2	9/6			
E-512 ENG6 Brierville	Dilling, CJ	3	9/3			
E-524 ENG6 C2C Wildfire	Welsh, Wayne	2	8/28			
E-565 ENG6 Tom Brooks Trucking	Shoaf, Dusty	2	9/7			

7. Control Operations

Fall hazard trees to mitigate threats during holding and mop-up actions.
 Locate and contain spot fires.
 Mop up 100 feet from perimeter.

8. Special Instructions

Document location of spot fires with ribbon and gps coordinates.
 Be careful not to disturb cultural resources or artifacts. If any artifacts are spotted do not touch or remove them. Report the location (with a picture if possible) to your Division Supervisor to forward to the Liaison Officer.
 Back haul any garbage and excess equipment.

9. Division/Group Communication Summary

Function	Frequency	Tone	Channel	Function	Frequency	Tone	Channel
Command RX	151.445	146.2	9	Logistics			
TX	158.895						
Tactical Div/Group	151.460	156.7	6	Air to Ground	151.475	156.7	7

Prepared by: *Ron Zill* Resource Unit Leader Approved by: *[Signature]* Plans Section Chief
 Date: *8/26/18*

AIR OPERATIONS SUMMARY		Incident: RAMSEY CANYON		DATE: 08/27/2018		TFR? Y					
Prepared By: Dan Menk	Prepared: 08/26/2018	SUNRISE: 06:32	SUNSET: 19:54	PUMPKIN TIME: 2024	TFR radius: 5	nm					
REMARKS: High Power Transmission Lines in/near the fire area		Surface to: 9000ft									
Beagle Helibase 5400 Beagle Rd, White City 42 32.2 by 122 54.4 elevation 1425 MSL		Center Lat: 42 34.70									
		Long: 122 59.61									
PERSONNEL:		PHONE:		FREQUENCIES		RECEIVE		TRANSMIT		REMARKS	
AODB	Neal Laugle	503-580-4942		A/A Fixed Wing/TFR	133.4250			same			
ATGS	Mike Leach	541-219-0477		A/A Rotor	118.1250			same			
ATGS (t)	Robert Franson	541-297-7470		A/G Tac 7	151.4750	156.7	same	same			
HEB1	Dan Menk	541-731-4569		A/G Secondary Tac 4	151.3850	156.7	same	same			
HEB1(t)	Kelly Foster	503-586-6944		TOLC/Deck	163.1750		same				
HMGB(t)	Brent Chapman	541-816-7162		A/A Initial Attack	124.4750		same				SWO Initial Attack
HMGB(t)	Cameron Dupree	541-840-9904		A/G Initial Attack	151.3100	156.7	same	same			TX tone req'd "WHITE NET"
ABRO	Stephanie Beall			Disp/FF ODF Medford	151.1750	179.9	same	same			"Medford ODF" (Roxy Ann rpt)
				Disp/FF ODF G.P.	151.1450	179.9	same	same			"Grants Pass" (Sexton rpt)
				National Flight Follow	168.6500	110.9	168.6500	110.9			Use on Federal fires
				Air Guard	168.6250	none	168.6250	110.9			Emergencies: Monitor always.
HELICOPTERS: Rappel ship ordered by ODF dispatch thru MICC											
FAAF#	TYPE	MAKE/MODEL	BASE	AVAIL	REMARKS	TYPE/ID	BASE	AVAIL	REMARKS		
N84CK	3	206B-3	Beagle	09:00	Air Attack Platform IA	T-62	RDM	0900			
N350AW	3	AS350 B3	Beagle	09:00	With Helitack Crew						
N12AC	3	Bell 206 B3	Beagle	09:00	Air Attack Platform IA						
N669KB	2	UH-1F	Beagle	09:00	Bucket/Restricted	52U	GP	1000			
N284MM	2	UH-1F	Beagle	09:00	Bucket/Restricted						
N618CK	1	S-61 NM	White City	09:00	Bucket						
MERCY 105	3+	Bell 407, no hoist	MFR	24/7	NVG: Ordered thru 911						
Alert 3	3+	MD-600N	Ashland	30 min.	Short Haul. Order thru Jackson Co.S.O.						

Incident Radio Communications Plan		1. Incident Name: Ramsey Canyon Fire	2. Date/Time Prepared: 08/26/2018 19:00	3. Operational Period: Day 8/27/2018
---	--	--	---	--

4. Basic Radio Channel Utilization – Ramsey Canyon Fire

System/Cache	Portable Channel	Function	Frequency	Assignment	Remarks
Fire Cache Tac 1	1	Tactical	151.235 TX/RX Tone 156.7	Div. A	
Fire Cache Tac 2	2	Tactical	151.250 TX/RX Tone 156.7	Div. D	
Fire Cache Tac 3	3	Tactical	151.355 TX/RX Tone 156.7	Div. H	
Fire Cache Tac 4	4	Tactical	151.385 TX/RX Tone 156.7	Secondary Air to Ground	
Fire Cache Tac 5	5	Tactical	151.415 TX/RX Tone 156.7	Div. K	
Fire Cache Tac 6	6	Tactical	151.460 TX/RX Tone 156.7	Div. N	
Fire Cache Tac 7	7	Tactical	151.475 TX/RX Tone 156.7	Air to Ground	
Fire Cache Tac 8	8	Tactical	151.490 TX/RX Tone 156.7	unassigned	
CMD 1	9	Repeater	Rx 151.445 Tx 158.895 Tx Tone 146.2	Command 1 <i>Fireline to ICP</i>	FC Net 2 Repeater Div. A / N
CMD 2	10	Repeater	Rx 151.430 Tx 159.450 Tx Tone 146.2	Command 2 <i>Fireline to ICP</i>	FC Net 2 Backup Div. D / H / K
Medford ODF	11	Repeater	Rx 151.175 Tx 159.4125 Rx/Tx Tone 179.9	Medford Dispatch I/A	Roxy Ann Repeater Mobile Dist Relay 16F) (ODF
White Net	12	Tactical	151.310 TX/RX Tone 156.7	I/A Air to Ground	
State Fire Marshal	13	Structural	154.280	Structural Tac	
VTAC 37	14	Structural	Rx 154.4525 Tx 158.7375 Tx Tone 136.5	Structural Repeater	Non-Operational
RV Tac 2	15	Tactical	159.240 TX/RX Tone 156.7	Initial Attack	ODF NICS
Air Guard	16	Emergency	168.625 TX Tone 110.9	Emergency	Air Guard

5. Prepared by: LeRoy E. Dwire (Communications Unit)

All frequencies are narrowband analogue.



INCIDENT Weather Forecast

FORECAST NO: 07

NAME OF FIRE: Ramsey Canyon

PREDICTION: Operational Day Shift

UNIT: Oregon Dept. of Forestry

SHIFT DATE: Monday 08/27/2018

SIGNED: Greg Murdoch *Greg Murdoch*

Incident Meteorologist (IMET)

TIME AND DATE

FORECAST ISSUED: Sunday, 08/26/2018 at 2000

WEATHER DISCUSSION: A brief shower this morning with only a few hundredths of an inch possible. It will turn drier and warmer this afternoon with temperatures approaching 80 and minimum humidity near 30%, but even more so Tuesday when a northeast wind prevails. Deeper mixing and dry air above the ridgetops will favor the return of a Haines Index of 5 on Tuesday.

WEATHER FORECAST TODAY:

WEATHER: Areas of smoke and mostly cloudy with a light shower possible through mid-morning. Otherwise mostly sunny by afternoon.

TEMPERATURES: Highs 75-80.

MINIMUM HUMIDITY: 27-36%.

20 FT WINDS:

RIDGETOP – Northwest to north less than 6 mph, then north 6-10 mph a few gusts near 18 mph after 1500.

SLOPE/VALLEY – Terrain driven 3-6 mph, gusts up to 15 mph in aligned valleys.

HAINES INDEX: 4 (Low).

STABILITY/INVERSION: Lifting by 1130 AM.

MONDAY NIGHT: Partly cloudy and drier. Lows 50-58. Maximum humidity 55-60% ridges to 70-80% valleys. North to northeast 6-10 mph.

TUESDAY: Much warmer and drier. Mostly sunny. Highs 82-87. Minimum RH 15-21%. Northeast to east wind 7-11 mph.

EXTENDED...

WEDNESDAY-THURSDAY: Temperatures back off a few degrees and humidity trends up. Highs 75-85. Humidity in the 20-30% range. Northwest wind 5-10 mph.

Monday 27th Sunrise: 631 AM PDT

Monday 27th Sunset: 754 PM PDT

FIRE BEHAVIOR FORECAST

FORECAST NUMBER: 7	INCIDENT TYPE: Wildfire
FIRE NAME: Ramsey Canyon	OPERATIONAL PERIOD: August 27, 2018 Day
DATE ISSUED: August 26, 2018	TIME ISSUED: 1800
UNIT: OR-MED	PREPARED BY: Jeff Stampfly - FBAN

INPUTS

WEATHER SUMMARY:

*****See Incident Weather Forecast*****

FUELS & FUEL MOISTURE:

- Fuels consist of grass and shrubs generally less than 3 ft. tall (GS2), small timber or shrub with heavy forest litter (TU5) and brush (FM5). This is also a mixture of ponderosa pine, lodgepole pine and Douglas fir. It is important to identify the types of fuels where you are as they impact fire behavior.
- **Fine Fuels: 5-8% depending on shading. 100hr (1"-3") 9%; 1000hr (3"+) 8%. Grass fuels are cured.**

OUTPUTS - FIRE BEHAVIOR

GENERAL:

Today: Rainfall amounts are not expected to impact fire behavior as any moisture will be offset with warmer and drier conditions building into Tuesday. Unsuppressed fire activity will be moderate to active this afternoon and any fire activity will linger well into the evening, which will be warmer and drier than previous nights. Where slope and general wind direction align with supporting fuels, expect an increase in fire behavior. When this occurs, short uphill runs are possible, leading to an increased potential in torching and subsequent spotting. As always, be aware of fuel type changes and expect faster rates of spread in the brush and grass versus timber.

Fire Behavior based on worst case daytime predicted weather and unsuppressed fire.

Fuel Type	<u>Low-Elevation ROS</u>	<u>Low-Elevation FL</u>	<u>Spotting Distance</u>	<u>Ridgetop ROS</u>	<u>Ridgetop FL</u>
Grass/Shrub (GS2)	25-30 Feet/Minute	5-6 Feet	Up to .3 Miles	35-40 Ft/Min	6-7 Feet
Timber w/ Understory (TU5)	10-15 Feet/Minute	7-8 Feet	Up to .2 Miles	15-20 Ft/Min	8-9 Feet
Brush (FM5)	30-35 Feet/Minute	6-7 Feet	Up to .3 Miles	45-50 Ft/Min	8-9 Feet

Probability of Ignition (PIG): 40-50% during the peak of the burning period.

SPECIFIC:

South Side (Div. H, K, N): Despite being generally downwind, conditions continue to be favorable for mop up. Torching trees casting embers could drift downwind. Main fire spread will be south/southeast. Any unchecked fire line has potential to spread down canyon. Consider the effect of a northeast wind on Division N on Tuesday.

North Side (Div. A, D): Generally, a north aspect and a northerly wind will cause the fire to continue to back downslope. Flanking fire across slope and short uphill runs are also possible. Heavier fuels are holding more residual fire here. Fuel rollout could be a problem. Expect more fire activity higher on the slope.

AIR OPERATIONS: Areas of smoke, cloud cover and a slight chance of rain. Inversion lifts by 11:30 and skies become sunny later in the day.

SAFETY: If gridding in unburned fuels outside the perimeter, maintain situational awareness of the fire within the perimeter. If gridding inside, be aware of snags and hollow trees. Four days of burning will increase their potential to fall.

****Base all action on current and expected fire behavior****

MEDICAL PLAN	1. INCIDENT NAME	2. DATE PREPARED	3. TIME PREPARED	4. OPERATIONAL PERIOD
	Ramsey Canyon Fire	08/26/18	1530	Day

5. INCIDENT MEDICAL AID STATIONS

MEDICAL AID STATIONS	LOCATION	PARAMEDICS	
		YES	NO
Ramsey Canyon Fire Camp	Ramsey Canyon Fire Camp	X	
Line Medic	Bybee Springs Staging	X	
Med Transport (M-23)	Meadows Staging	X	

6. TRANSPORTATION

A. Air Ambulances

NAME	ADDRESS	PHONE	PARAMEDICS	
			YES	NO
Mercy Flights- Medford	BO-105	911	X	
Mercy Flights- Medford	Fixed Wing	911	X	

B. Ground Ambulances

NAME	ADDRESS	PHONE	PARAMEDICS	
			YES	NO
Mercy Flights	Jackson County	911	X	
Rogue River Fire	Jackson County	911	X	

7. HOSPITALS

NAME	ADDRESS	TRAVEL TIME		PHONE	HELIPAD		BURN CENTER	
		AIR	GRND		YES	NO	YES	NO
Rogue Regional	2825 Barnett Road, Medford Lat. 42 19 03 Long. 122 49 27			541-787-7000	X			X
Providence	1111 Crater Lake Ave, Medford Lat. 42 20 22 Long. 122 51 32			541-732-5000	X			X
Three Rivers	500 SW Ramsey Ave, Grants Pass Lat. 42 25 13 Long. 123 20 35			541-472-7000		X		X
Burn Center- Emmanuel	Portland, OR			800-222-1222	X		X	

8. MEDICAL EMERGENCY PROCEDURES

1. LINE EMERGENCY: Crew Supervisor to contact Division Supervisor with patient complaint/condition and location.

- Division Supervisor contacts:
 - Line EMT / PM
 - Communications Unit
- Communication Unit will clear command channel for emergency traffic
- Communications Unit contacts:
 - Medical Unit
 - Safety
 - Operations
- Division Supervisor will run medical emergency on command channel
- Medical Unit will:
 - Dispatch ground ambulance to nearest drop-point for ground transport only.
 - Or after patient pickup, dispatch ambulance to Helibase for Medical AIR EVAC Flight if needed
 - Notify receiving hospital of injury status.

1. CAMP EMERGENCY: Contact Medical Unit with patient complaint/condition and location. Medical Staff will respond to stabilize incident:

- Medical Unit contacts:
 - Communications
 - Safety
 - Logistics
 - Operations
 - Crew Supervisor

7. INCIDENT COMMUNICATIONS:

- Command: Channel 9 & 10
- Air to Ground: Channel 7

INJURY REPORTING PROCEDURES

2. EMERGENCY IC _____

IS AN EMT WITH PATIENT: YES ____ NO ____

IS A PARAMEDIC WITH PATIENT: YES ____ NO ____

3. NATURE OF INJURY _____

AGE ____ WEIGHT ____ SEX: MALE ____ FEMALE ____

CONSCIOUS? YES ____ NO ____ BREATHING? YES ____ NO ____

PATIENT UNIT ID _____
REMINDER: DO NOT GIVE PT NAME OVER RADIO

4. ____ RED-URGENT ____ YELLOW-PRIORITY ____ GREEN-ROUTINE

5. TRANSPORTATION REQUESTED BY: AIR ____ GROUND ____

6. ADDITIONAL NEEDS _____

8. LOCATION OF PATIENT _____
Division, closest DP

POINT OF PICKUP _____

LAT _____ LONG _____

9. CONTINGENCY _____

Safety Message

INCIDENT NAME: Ramsey Canyon Fire

OPERATIONAL PERIOD: 08/27/2018 Day

MAJOR HAZARDS:

- Snags/Hazard Trees
- Rolling Rocks
- Driving
- Steep Terrain
- Public in the area
- Bees, Snakes & Poison Oak
- Powerline through Fire Area

NARRATIVE:

Fatigue has an impact on risk taking- Take a pause and review LCES.

CONTINGENCY PLANNING:

- **Are your contingency plans in place? Are they viable? Are you prepared for:**

Heat exhaustion on the fire line?
Hazard tree hitting a firefighter?
Tire blow-out while traveling at higher speeds?
Deep chainsaw cut on the line?
Meeting an oncoming public on a narrow corner?
Wildlife in the road as you come around a corner?
Vehicle break down?
Electrical short/fire in ICP?
Pump failure on an engine?
Irate and belligerent homeowner?
Insect bite to an allergic person?
Radio repeater malfunction?
An unexpected initial attack response?

Be prepared for those **LOW FREQUENCY-HIGH CONSEQUENCE EVENTS.**

Leadership Quote of the Night!

***Either You Run The Night
Or
The Night Runs You!***

(Adapted from the original Jim Rohn)

SAFETY OFFICER:

ODF Scott West



Safety Analysis of Tactical Actions (215A)

Incident Name: Ramsey Canyon Fire			Date and Time Prepared: 8/26/2018 - 1545			Operational Period: 8/27/2018: Day 0600 - 1800					
TACTICAL HAZARDS											LCES MITIGATION
	A	D	H	K	N						
Indirect Fireline											Establish LCES. Insure that communications between lookouts and line resources are maintained. Escape Routes are identified and reevaluated continuously.
Downhill Fireline											Follow downhill line standards. Bring fire with you. Insure lookout can see entire area. Identify safety zones and escape routes before starting work. Use page 9 of Incident Response Pocket Guide 2018. Establish LCES.
Underslung Fireline											Cup trench. Post lookout that can see all areas of under slung line. Establish LCES.
Mid-Slope Fireline											Insure that lookouts can see ALL area of mid slope line as well as areas upslope of mid slope line. Establish Trigger Points and reassess as fire or weather conditions change. Establish LCES.
Frontal Assault											Identify thresholds for reassessment. Establish LCES.
No Anchor Points											Find/construct safe, effective anchor before engaging. Establish LCES.
Extreme Conditions (Spotting, Wind)											High potential given because of low live fuel moisture and high probability of ignition. Anticipate. Identify thresholds for reassessment, monitor weather. Establish LCES.
Heavy Equipment	X	X	X	X	X						Do not work down slope below heavy equipment. Establish communications with operator. Post lookout for rolling debris. Be aware of loose soil and rock. Establish LCES.
Air Operations Multi Aircraft	X	X	X	X	X						Insure that all personnel are at least 500 feet from bucket or retardant drops. Utilize air attack. Establish LCES.
Hazard Trees/Snags	X	X	X	X	X						Assess, Identify, Communicate, Isolate, Mitigate. Establish LCES.
Hazardous Materials	X	X	X								Utilize the Incident Response Pocket Guide. Identify and isolate any suspected hazardous materials. Notify supervisor and warn others in area. Keep your distance. Establish LCES.
Unburned Area Unknown Fires											High potential for re-burn in brush and conifers prepared by earlier burn. Blowdown areas keep a close eye on. Post lookouts. Watch for increase in burn activity. Monitor weather for change in RH and or wind conditions. Establish LCES.
Transportation	X	X	X	X	X						Drive defensively with headlights on, seatbelts fastened. Stay to the right side of the road. Yield to downhill traffic and flaggers. Drive slowly and watch out for the other person. Establish LCES.
Communication											Establish LCES. Insure that communications between lookouts and line resources are maintained. Escape Routes are identified and reevaluated continuously.
Steep Terrain Gravity Hazards	X	X			X						Do not work crews above or below each other. Post lookouts for rolling material. Watch footing in loose or wet soil and rock. Do not work below heavy equipment. Establish LCES.
Environmental Hazards	X	X	X	X	X						Bees, and other animals are in the area. Carry medical kits for those with allergic reactions, do not harass or instigate any confrontations with animals, warn others of presence. Poison Oak - Preventative measures, locate, isolate, mitigate, communicate
Structures	X	X	X								Follow page(s) 13-16 of Incident Pocket Response Guide 2018. Establish LCES.
Transfer of Command											Make sure you understand your assignment. Know who your supervisor is and who is working for you. Do not assume. Re-brief all resources.
Span of Control											Adhere to Span of Control Guidelines-5:1. Ensure Overhead is sufficient for operation and identify chain of command. Ensure everyone receives a briefing. Retain control at all times.
Falling Operations	X	X	X	X	X						Post road guards. Have a falling boss who can be in contact with crews working in the area. Use qualified Fallers.
Power Lines	X	X	X	X	X						Watch for down power lines and poles. Identify, isolate and report. Notify supervisor and warn others in area. Keep your distance.
I.A. / Staging	X	X	X	X	X						Follow the 10 and 18, LCES - before engaging, re-evaluate for each new start!
Public	X	X	X	X	X						Identify, Establish communication with public, Notify Supervisor, Mitigate risk to Public.

Operations Section Chiefs: John Pellissier/Chris Barney	Date / Time: 8/26/18 - 1545	Safety Officers: Scott West	Date / Time: 08/26/18 1545
---	---------------------------------------	---------------------------------------	--------------------------------------



Incident Management Team: Incident Within An Incident Plan

The primary goal of this Plan is to allow incident personnel the guidelines necessary to *Locate, Triage, Extricate, Treat and Transport* all accident patients in as quick and safe a manner as possible. **The Division/Group Supervisor will initially oversee the emergency and activation of the Plan.** Radio communication will be on the "Command Frequency" and will take priority over all other radio traffic. **All Command and General Staff will be notified by the Safety Officer of what level (Green, Yellow or Red) the Incident is.**

G	Y	R	INCIDENT COMMANDER
			Ensures the Incident Within an Incident Plan is implemented
			Notifies Agency Administrator(s), Geographic Coordination Center, Salem Coordination Center, Salem Safety.
			Orders Investigator or Investigation Team
G	Y	R	OPERATIONS SECTION CHIEF
			Coordinate and support the Safety Officer's investigation and involved Law Enforcement agencies.
			Coordinate with Safety for ground ambulance transport, medical supplies and other medical needs.
G	Y	R	AVIATION EMERGENCIES:
			Air Attack, Air Operations Branch Director coordinate, as appropriate. OSC and IMT provide Support.
			Implement ODF Aviation Mishap Response Guide and Checklist & Heli-Base Emergency Plan, as appropriate.
			Coordinate with Air Operations Branch Director for notification to appropriate agencies.
G	Y	R	DIVISION/GROUP SUPERVISOR
			Will respond directly to the accident/incident scene and assume command until relieved, or clearly designate another capable person to be responsible, on your behalf.
			Remain aware of surroundings. Delegate Division/Group oversight to other qualified personnel, as needed.
			Size-up the Incident (Nature of Accident, Number/Type of Resources, Location, Safety for Incoming Personnel)
			Coordinate "Line EMT" response to the accident (Utilize Closest EMT's).
			Identify Location and Lat/Long coordinates of site.
			Identify Medical treatment and transportation needs.
			Begin "TRIAGE" (PINK pages of the Incident Response Pocket Guide – IRPG)
			Determine and initiate treatment and transportation needs.
			Evaluate special needs (Law Enforcement, Heavy Rescue, Haz Mat, fire protection or suppression)
			Coordinate with Air Attack for Air-Medical transportation needs
			Notify OSC and SOF of all accidents/incidents.
			Preserve the scene for accident investigation and begin documentation.
G	Y	R	SAFETY OFFICER
			Maintain Overall Incident Safety. Provide coordination between the incident and other IMT sections and units.
			Implement the Incident Within an Incident Plan for all incidents, providing coordination between the on- scene Division/Group and other IMT sections and units.
			Ensure appropriate incident organization.
			Coordinate and oversees line EMT& Paramedic response to the accident site.
			Provide for immediate extrication and medical triage, treatment and transportation.
			Request a Size-up of the situation. Number of people involved and their medical condition (Triage). Nature of the incident (auto/aircraft accident, burn over, etc.) and number of crews, vehicles or aircraft involved.
			Coordinate with Air Operations Branch Director for Air-Medical transportation needs.
			Ensure air/ground ambulances coordinate patient transportation locations with the Medical Unit Leader
			Identify special needs, i.e. Law Enforcement, Heavy Rescue, and Haz Mat response.
			Evaluate safety issues at all accident/incident sites and work with Division/Group Supervisor in charge to mitigate them.
			Initiate the investigation of the emergency and coordinate with the IC to request the appropriate investigation resources/teams.
			Secure witness names, initial statements and all evidence relating to the accident.
			Coordinate with the Logistics Section for on scene support and location of receiving hospitals for patients.
			Coordinate investigation with comps/claims unit.
			Obtain sketches and photos of emergency scene.
			Assist Medical Unit Leader with communications with the hospital and ambulance service.

G	Y	R	LIAISON
			Assist the Medical Unit Leader as needed
			Insure coordination with investigating entities
			Assist other positions as needed
			Coordinate with cooperators and key stakeholders
G	Y	R	INFORMATION OFFICER
			Collect pertinent emergency information.
			Coordinate information release with Incident Commander and Agency Public Affairs Officer.
			Assign Information Officer(s) to field media inquiries at accident scene, med-evac area and hospital.
			Coordinate with Liaison and Safety Officer regarding roadblocks, evacuations and emergency medical information needs.
			No personal information shall be released until approved by Incident Commander. Coordinate with local Agency.
			Coordinate with employee's home unit.
G	Y	R	PLANNING SECTION CHIEF
			Complete the 209 and coordinate with IIO to include accident information and status in the daily morning fire update report sent to Salem Coordination Center.
			Coordinate Critical Incident Stress Debriefing for effected personnel.
			Provide and coordinate a Family Liaison with supporting agencies, (Home Unit, Red Cross, 100 Club, Chaplin)
			Provide Briefing at ICP for Incident Personnel
			Ensure all communications regarding the accident and actions are well-documented.
G	Y	R	LOGISTICS SECTION CHIEF
			Assume command and implement Incident Within Incident Plan for incidents within the ICP or Camp in absence of SOF
			Ensure maintenance of accurate radio logs, use the Injury Communications Protocol Form (Logistics Manual Appendix I – 10) until the emergency has terminated. Ensure Safety Officer receives copies in a timely manner.
			Establish emergency radio communications, on a different frequency, if requested by scene IC.
			Provide ground or air transportation, depending upon need. Coordinate with Air Operations Branch Director.
			Order needed resources for the emergency
			Monitor support functions and assess additional needs.
			Coordinate removal of damaged vehicles.
			Coordinate Security with Team Liaison and Operations Section Chief as necessary.
			Locate and secure personal effects of injured personnel.
G	Y	R	FINANCE SECTION CHIEF
			Coordinate with Agency Administrative Officer(s) and Agency Risk Manager.
			Coordinate Compensation/Claims Unit response (Risk Management Forms).
			Notify Home Unit or Office of injured person(s). (Agency or Contractor)



BURN INJURY PLAN

Oregon Department of Forestry employees deserve the highest standard of burn care management when injured in the performance of their duties.

Burns will be classified as either Minor or Serious. Treatment, transportation, and follow-up specialty care will be based upon the severity of the burn classification. Burns will be classified by the established Medical Unit on project fires. Unit Supervisors will classify burns received in any other situation. Do not delay medical treatment for Medical Unit or Unit Supervisor classification in emergency situations.

Minor Burns

Superficial (first degree) burns involving less than 10% of body surface area that **does not** involve face, hands, feet, genitalia, joint areas, chemical burns, or burns with potential of respiratory complication.

The injured person in conjunction with the Medical Unit or Unit Supervisor will make treatment and transportation decisions for Minor Burns. Minor Burns requiring medical attention will be evaluated at a qualified hospital offering full service emergency care. Urgent care facilities and clinics are not an acceptable source for evaluation and treatment of burn injuries.

NOTE: All burns resulting from fire entrapments, direct flame contact, or superheated gases will be treated as a Serious Burn.

Serious Burns

Burns involving more than 10% of body surface area or burns of the face, hands, feet, genitalia, joint areas, chemical burns, or burns with potential of respiratory complication.

All serious burns will be transported to the closest appropriate medical facility for initial evaluation and stabilization. After stabilization, patients with serious burns will be transported to a qualified regional burn center as soon as possible for evaluation, treatment, and follow-up.

The Incident Commander, Unit Supervisor or designee has the discretion to request that burn injuries, regardless of their apparent severity, be evaluated at a qualified regional burn center. The Incident Commander, Unit Supervisor or designee will assign a representative to maintain contact with the injured employee throughout their care.

REGIONAL BURN CENTERS

OREGON, Portland

Oregon Burn Center
Legacy Emanuel Hospital
2801 N. Gantenbein Ave
Portland, OR 97227
(503) 413-4232

WASHINGTON, Seattle

University of Washington Burn Center
Harborview Medical Center
325 Ninth Avenue
Seattle, WA 98104
(206) 744-3000

CALIFORNIA, Sacramento

Davis Regional Burn Center
University of California
2315 Stockton Boulevard
Sacramento, CA 95817
(916) 734-3636

ODF Ramsey Canyon Fire

MOP UP STANDARDS

August 24th, 2018

Objective: The Ramsey Canyon Fire shall be mopped-up to a standard which the likelihood of the fire escaping the containment lines unlikely. The standards below can be flexible and should be applied based on physical conditions present, considerations for firefighter safety, and the expertise of the Incident Management Team (IMT) as long as the objective is achieved. These standards apply to all lands within the fire perimeter.

- Grid the green out to 300 feet from the fire perimeter for two burning periods
- Mop up 100% into hard black a minimum of 300 feet
- Mop up 100% all spot fires, in addition, a route to them will be flagged and the perimeter mapped in GIS
- Line unburned islands and drainages within 300 feet of the perimeter if they are not within the designated mop up area
- Mop up to 300 feet into hard black any dirty burn areas and areas of higher fuel concentrations. The decision to mop up this far into the fire will be based on the expertise of the IMT which is to consider fuels, aspect, wind exposure and firefighter safety
- Heat detecting equipment will be used to detect for hot spots within 300 feet of the perimeter including spot fires
- Complete felling of all snags and fire damaged trees that have been identified as a safety concern, have the potential to cause spotting outside control lines or is within 300 feet of major travel corridors and structures.

RAMSEY CANYON FIRE
FIRE SUPPRESSION REPAIR
OREGON DEPARTMENT OF FORESTRY PROTECTED PRIVATE LANDS

GENERAL

- Remove and properly dispose of all garbage and litter from control lines, roads, drop points, staging areas.
- Flagging, transportation route signs, and other fire signage will be removed as an ongoing basis. Complete removal upon completion of mop-up activities by transition team.
- All firefighting equipment not necessary for future mop-up and patrol will be removed. Equipment to be left on the line will be negotiated with the Southwest Oregon District and documented in the transition plan.

FIRELINES – FUEL BREAKS – SAFETY ZONES – STAGING AREAS

- Waterbar all control lines (dozer and handlines) as appropriate to control soil erosion and to protect water quality. Steep handline sections should have cross drainage provided for every 10 feet of vertical elevation change.
- Use judgment in placing waterbars to properly facilitate drainage. Where feasible, drain waterbars away from burned areas and into brush or natural vegetation areas.
- Do not install waterbars at more than a 45 degree angle. Steeper slopes generate the need for waterbars near 45 degrees.
- Ensure waterbars are cut into fresh soil deep enough to be effective.

General Guidelines for Waterbar Spacing

Fire Line Slope	Maximum Spacing
1-6%	300 ft.
7-9%	200 ft.
10-14%	150 ft.
15-20%	90 ft.
21-40%	50 ft.
41-60+%	25 ft.

- On steep slopes where machine activity can't place waterbars effectively or would cause additional disturbance, provide hand constructed waterbars.
- Remove any fill or excess side-cast pushed into or immediately adjacent to streambeds or dry streambed channels.
- Waterbar approaches to stream crossings, including dry stream bed approaches.
- Berms created by dozer control actions and access routes should be back-bladed only where excessive and may cause water drainage problems.

- Safety zones, fuel breaks and staging areas that were cleared by dozer should be drifted or back-bladed to remove excessive berms. Reshape to natural contour of land to promote water drainage. Waterbar as necessary to prevent erosion.

ROADS

- Roads opened and utilized for fire suppression activities will, at a minimum, be crossed drained as necessary for effective erosion control. Roads shall remain open and travelable.
- Pre-existing, reopened, and new roads should be stabilized to protect water quality and road surface material.
- If cross drainage waterbars are needed on existing roads they shall be constructed as rolling dips to allow for normal vehicle traffic.
- Roads that were opened or constructed for fire suppression activity may be closed if not needed for continued containment and patrol if desired by landowner.
- Roads will not be returned to pre-fire condition, resurfaced, vacated, rebuilt, or otherwise improved as part of fire suppression repair.

PUMP SITES

- Remove any structures or developments to allow for properly functioning of watercourses.

FENCE SUPPRESSION ACTION DAMAGE

- Fence lines damaged (cut) by suppression action will be identified and repaired.

Initial Guidelines for Suppression Repair of Fire Suppression Activities

BLM Managed Lands

The objective of suppression repair is to mitigate the adverse effects to the land, water, and property resources directly resulting from fire suppression activities. Primary suppression repair needs are erosion control, preventing the establishment of noxious weeds, preventing public access into the burn area via vehicles and/or OHVs, and clean-up of refuse from suppression activities. The following includes general guidance to be applied on all divisions.

General Clean-up Common to all Divisions:

- Following suppression repair actions, remove all litter, signs, and fire-related flagging from all areas utilized for suppression activities, including staging areas, drop points, safety zones, escape routes, water sources, firelines, helibase locations, helispots, access routes, and camping areas.

Fireline Suppression Repair:

Suppression repair of perimeter control lines is to be based on current and future fire behavior and will be coordinated with ODF prior to implementation of suppression repair measures.

Suppression repair of interior and contingency firelines can be completed as appropriate using the following guidelines:

Hand Lines:

- Pull berms back into line.
- Construct hand built water bars based on slope; space in accordance with Table 1: Water Bar Guidelines (below).
- Height of handline water bars should be approximately 12 inches from bottom of ditch to top of bar.
- Water bars should be constructed into the compacted soil and not constructed from loose soil and duff.
- Water bars should have out-sloped trenching at 30 degree angles from perpendicular; preferably into the unburned side of the fireline if topography allows.
- Ensure water bars are placed such that water flows downhill.
- Ensure all water bars have free flowing outlets.
- Outlets shall flow into course woody debris or other vegetative filters.
- Pull slash back over line following water bar construction.

Dozer Lines:

- **Work with Resource Advisor(s) to implement the following repairs utilizing dozers, excavators, or by hand:**
 - Flatten dozer berms back into constructed line.
 - Construct hand or machine water bars; space in accordance with Table 1: Water Bar Guidelines (below).
 - Water bars should have out-sloped trenching at 30 degree angles from perpendicular; preferably into the unburned side of the fireline if topography allows.
 - Utilize changes in topography to facilitate waterbar drainage.
 - Constructed water bars should be approximately 18 inches high from bottom of ditch to top of bar.

- Construct water bars into compacted soil. Do not construct water bars from loose soil and duff.
- Ensure all water bars have free flowing outlets.
- Outlets shall flow into coarse woody debris or other vegetative filters.
- Following water bar construction, pull large and coarse woody debris back over line – to determine percent cover, emulate what the adjacent green side of the line looks like;
 - For dozer line traversing forested areas where there is at least 40% live canopy remaining over line, scatter woody debris over bare soil. Generally, at least 75% of the fireline surface area should be covered with mulch and slash – however, the green side of the line should provide a baseline for what was naturally there prior to line construction, which may be less than 75%.
 - For dozer line traversing open areas (meadows, young plantations, etc) where canopy is nonexistent: use seed and mulch to supplement cover where feasible. Medford BLM will supply seed and mulch.
- Dozer lines that intersect existing roads shall be blocked to prohibit vehicular/ATV traffic; block with root wads, cull/hardwoods logs, boulders, and other general debris. Where sufficient material is not present on site to restrict traffic, trench barricade.

Table 1: Water Bar Guidelines (Hand and Dozer Lines)

Fire Line Slope %	Maximum Water Bar Spacing (feet)
2-5	300
6-10	200
11-15	150
16-20	100
21-35	75
36+	50

Existing Roads:

- Close roads to motorized traffic that were closed prior to suppression activities.
- Disperse berm material from blading over banks and away from ditchlines; along streams pull bermed material back over roadbed to avoid side-casting sediment into streams.
- Pull cut woody and coarse debris out of ditchlines and away from culvert inlets.
- **Ensure all slash from suppression activities along roads is removed and treated.
 - **If treated using chipping, do not exceed a depth of 4 inches of chipped material
 - **If treated using lop and scatter or other methods do not exceed a depth of 18 inches.
- Clean culvert catch basins impacted by suppression actions.
- Maintain roads for safety during fire suppression repair activities.

Safety Zones, Staging Areas, Parking Areas & Drop Points:

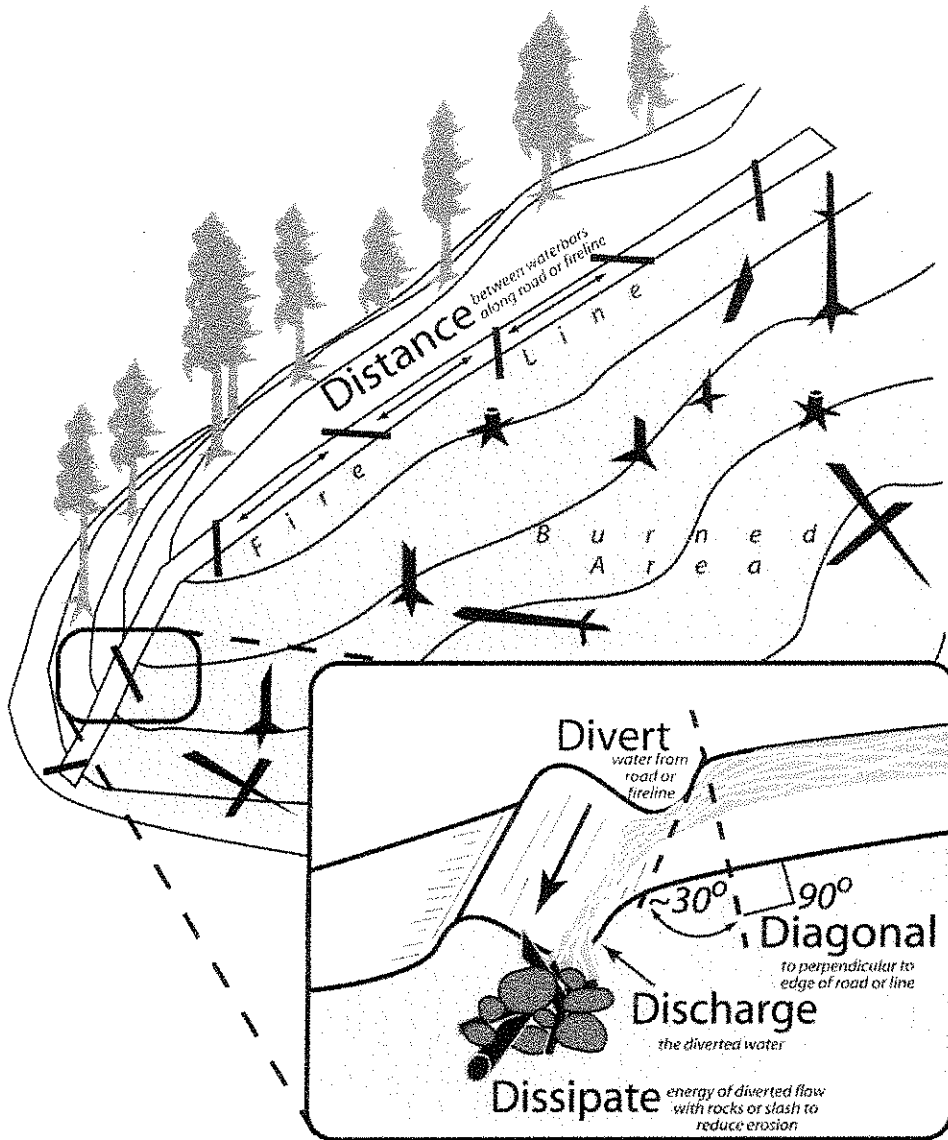
- Feather berm material back across site and re-contour site to allow for drainage to filter into vegetation.
- Seed and mulch all areas that are not part of the existing road bed.

Commercial Logs:

To reduce fuel loading from suppression activities and for safety and infrastructure maintenance

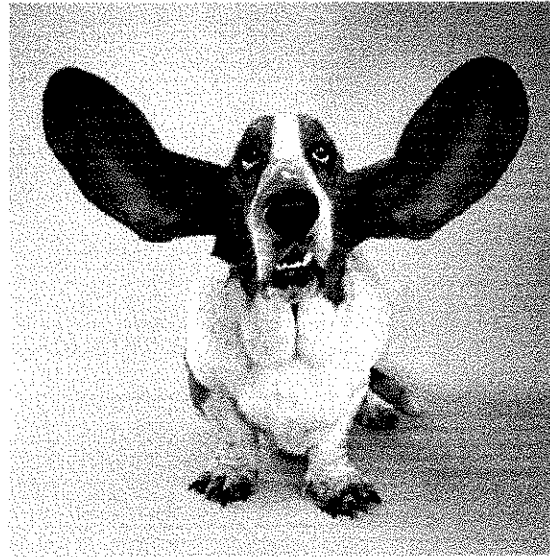
- Process and deck all commercial logs cut along control and contingency lines.
- Process standards – minimum 18 ft with 5 inch diameter top; preferred length 28 or 35 feet
- Coordinate water bar installation and utilization of processed material for dozer line repair.
- Resource advisors will evaluate the need for additional measures.

Use the water bar spacing guide above along with the diagram and specification below for proper water bar installation.



- Cut in the water bar – do not simply push up loose soil.
- Water bars should direct runoff AWAY FROM the burned area where possible.

I Take Responsibility To:
Listen carefully and with an
open mind.



*The biggest communication
problem is we do not listen to
understand, we listen to
reply.*



Ramsey Canyon Fire Information

(541) 238-5348 (8am—8pm)

<https://inciweb.nwcg.gov/incident/6167/>

email: RamseyCanyonFireInfo@gmail.com

**For Information on area fires call the
Joint Information Center**

(541) 474-5305 (7am-8pm)

CAMP HOURS

SHOWERS

El Dorado Shower

0500 – 1200

1400 – 2300

ODF Shower

0700 – 2300

KITCHEN

0500 – 0930

1700 – 2130

TIME UNIT

0530 – 0930

CACHE

0530 – 2300

Laundry

0500 – 2300

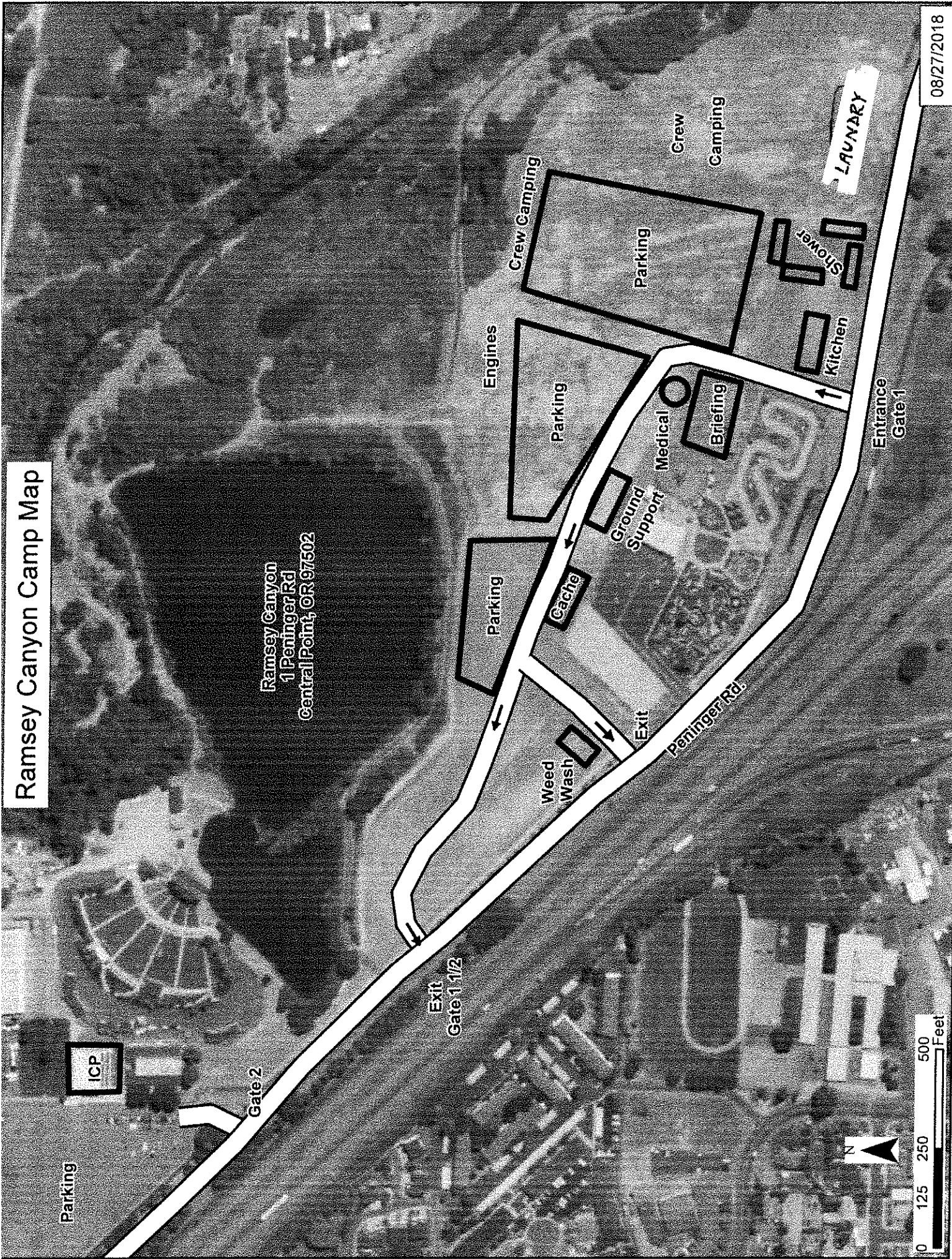
Weed Wash

0600 – 2300

Ramsey Canyon Camp Map

Ramsey Canyon
1 Peninger Rd
Central Point, OR 97502

08/27/2018



Parking

ICP

Gate 2

Exit Gate 1 1/2

Weed Wash

Cache

Parking

Engines

Parking

Ground Support

Medical

Briefing

Crew Camping

Parking

Crew

Camping

Shower

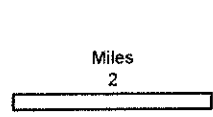
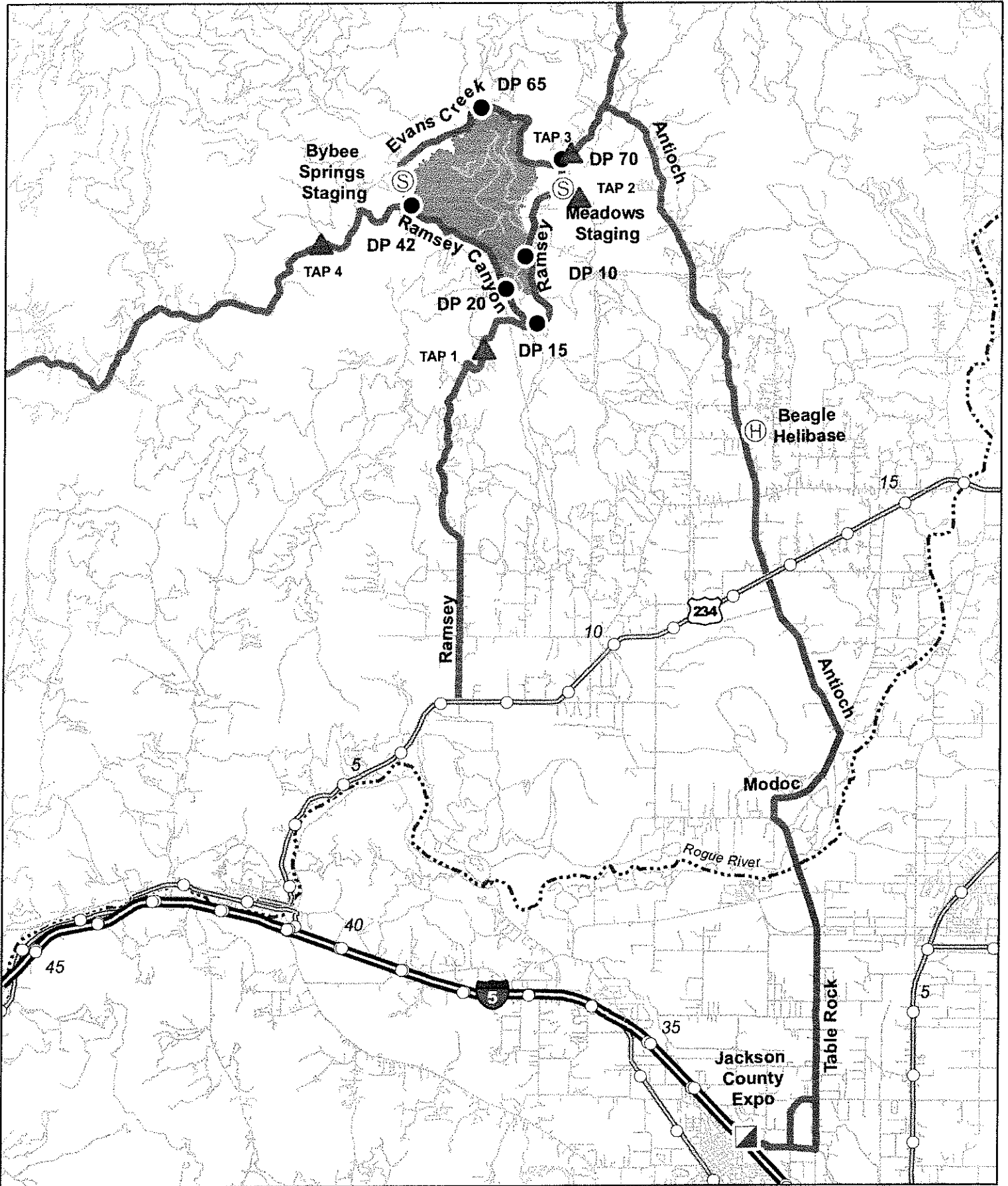
Kitchen

LAUNDRY

Entrance Gate 1

Peninger Rd.





- Drop Point
- ⊙ Helibase
- ⊙ Staging Area
- ▲ Traffic Assistance Points
- ▣ Incident Command Post
- ▬ Incident Access Route
- ▬ 15
- ⋯ Rogue River

ODF GIS
August 25, 2018, 1423 hrs

TRANSPORTATION
Ramsey Canyon
 OR 711S-032519
 August 25, 2018
 NAD 83

UNIT LOG	1. Incident Name	2. Date Prepared	3. Time Prepared
	4. Unit Name/Designators	5. Unit Leader (Name and Position)	6. Operational Period

7. **Personnel Roster Assigned**

Name	ICS Position	Home Base

8. **Activity Log**

Time	Major Events

9. Prepared by (Name and Position)

MEDICAL EMERGENCY PROCEDURES

1. LINE EMERGENCY: Crew Supervisor to contact Division Supervisor with patient complaint/condition and location.

- Division Supervisor contacts:
 - Line EMT / PM
 - Communications Unit
- Communication Unit will clear command channel for emergency traffic
- Communications Unit contacts:
 - Medical Unit
 - Safety
 - Operations
- Division Supervisor will run medical emergency on command channel
- Medical Unit will:
 1. Dispatch ground ambulance to nearest drop-point for ground transport only.
 2. Or after patient pickup, dispatch ambulance to Heli-base for Medical AIR EVAC Flight if needed
 3. Notify receiving hospital of injury status.

INJURY REPORTING PROCEDURES

2. EMERGENCY IC _____

IS AN EMT WITH PATIENT: YES ____ NO ____

IS A PARAMEDIC WITH PATIENT: YES ____ NO ____

3. NATURE OF INJURY _____

AGE ____ WEIGHT _____ SEX: MALE ____ FEMALE ____

CONSCIOUS? YES ____ NO ____ BREATHING? YES ____ NO ____

PATIENT UNIT ID _____

REMINDER: DO NOT GIVE PT NAME OVER RADIO

4.

RED / PRIORITY 1 Life or limb threatening injury or illness. Evacuation need is **IMMEDIATE**

Ex: Unconscious, difficulty breathing, bleeding severely, 2o – 3o burns more than 4 palm sizes, heat stroke, disoriented.

YELLOW / PRIORITY 2 Serious Injury or illness. Evacuation may be **DELAYED** if necessary.

Ex: Significant trauma, unable to walk, 2o – 3o burns not more than 1-3 palm sizes.

GREEN / PRIORITY 3 Minor Injury or illness. Non-Emergency transport

Ex: Sprains, strains, minor heat-related illness.

5. TRANSPORTATION REQUESTED BY: AIR ____ GROUND ____

6. ADDITIONAL NEEDS _____

7. INCIDENT COMMUNICATIONS:

- Command: Channel 9 & 10
- Air to Ground: Channel 7

8. LOCATION OF PATIENT _____

Division, closest DP

POINT OF PICKUP _____

LAT _____ LONG _____

9. CONTINGENCY _____

