

# RAMSEY CANYON FIRE

## Incident Action Plan



"STEWARDSHIP IN FORESTRY"

**Night Shift**  
**Thursday, August 23, 2018**  
**1800-0600**

**Incident Order Number**  
**OR-711S-325-19**

**Incident Fire Number**  
**711325-19**

# ICS-202 INCIDENT OBJECTIVES

1. Incident Name	2. Date Prepared	3. Time Prepared
Ramsey Canyon Fire	08/23/2018	1400

4. Operational Period			
NIGHT SHIFT	THURSDAY	8/23/18-8/24/18	1800-0600

## 5. General Control Objectives for the Incident (include alternatives)

**Incident Objectives**

- Provide for the safety of firefighters and the public through deliberate risk management, implementation of appropriate mitigations and clear understanding of assignments.
- Protect private lands, communities, timber, infrastructure and other values at risk by minimizing the size of the fire.
- Protect structures within delegated areas by preposition and use of conflagration resources. Re-evaluate, triage, and perform structure protection as appropriate.
- Provide initial attack within the designated response area and support local IA efforts.
- Develop and deliver accurate and timely fire information to landowners, the public, and cooperators, through the use of personal contacts, social media, public meetings, and web-sites as needed.
- Be fiscally responsible by continuing to evaluate incident needs and make appropriate adjustments.
- Treat all personnel, landowners, cooperators and the public with dignity and respect. Promote a positive and harassment free work environment.

**Operational Objectives**

- Utilize strategies and tactics that will minimize acres burned, and keep the fire:
  - East of East Evans Creek/West Evans Creek Road
  - North of Elkhorn Butte
  - West of Meadows Road
  - South of Evans Creek
- Implement suppression tactics in coordination with Resource Advisors on BLM lands to minimize impacts to resource values, threatened and endangered species, and cultural sites.

## 6. Weather Forecast for Period

See attached weather forecast.

## 7. General Safety Message

See attached safety message.

## 8. Attachments (mark if attached)

- |   |  |  |
|---|--|--|
| <input checked="" type="checkbox"/> Organization List - ICS 203     | <input checked="" type="checkbox"/> Fire Weather Forecast            | <input checked="" type="checkbox"/> Incident Map |
| <input checked="" type="checkbox"/> Div. Assignment Lists - ICS 204 | <input type="checkbox"/> Fire Behavior Forecast                      | <input type="checkbox"/> Rehab Plan              |
| <input checked="" type="checkbox"/> Communications Plan - ICS 205   | <input checked="" type="checkbox"/> Air Operations Summary - ICS 220 | <input type="checkbox"/> Traffic Plan            |
| <input checked="" type="checkbox"/> Medical Plan - ICS 206          | <input checked="" type="checkbox"/> Safety Message                   |  |

9. Prepared by	10. Approved by
C. H. Bess	

















# AIR OPERATIONS SUMMARY

Incident:

**RAMSEY CANYON**

DATE:

08/22/2018

TFR? Y

Prepared By: Chelsie Stephens

Prepared: 08/22/2018

SUNRISE: 0559 SUNSET: 2002

PUMP/KIN TIME: 2032

TFR radius: 5 nm

**REMARKS:**

Beagle Helibase 5400 Beagle Rd, White City 42 32.2 by 122 54.4 elevation 1425 MSL

Surface to: 9000ft Center Lat: 42 34.70 Long: 122 59.61

**PERSONNEL:** **PHONE:** **FREQUENCIES:** **RECEIVE** **tone** **TRANSMIT** **tone** **REMARKS**

HEB1	Kelly Foster		AIR TO AIR primary	133.4250		same			
ATGS	Steve Wetmore	541-621-4104	AIR TO AIR secondary	132.5250		same			
HMGB(t)	Brent Chapman	541-816-7162	Air to Air Initial Attack	124.4750		same			SWO Initial Attack
			A-G ODF primary	151.3100	156.7	same	156.7		TX tone req'd "WHITE NET"
			Deck- Beagle Helibase	159.2625	156.7	same	156.7		TX tone req'd "BLUE NET"
			Disp/FF ODF Medford	151.1750	179.9	159.4125	179.9		"Medford ODF" (Roxy Ann rpt)
			Disp/FF ODF G.P.	151.1450	179.9	159.2850	179.9		"Grants Pass" (Sexton rpt)
			National Flgt Follow	168.6500	110.9	168.6500	110.9		Use on Federal fires
			Air Guard	168.6250	none	168.6250	110.9		Emergencies: Monitor always.

**HELICOPTERS:** Rappel ship ordered by ODF dispatch thru MICC

FAA#	TYPE	MAKE/MODEL	BASE	AVAIL	REMARKS	TYPE/ID	BASE	AVAIL	REMARKS
N84CK	3	206B-3	Beagle	0900	Air Attack Platform IA	T-62	RDM	0900	
N350AW	3	AS350 B3	Beagle	0900	With Helitack Crew				
N669KB	2L	UH-1F	Beagle	0900	Bucket	52U	GP	1000	
N284MM	2L	UH-1F	Beagle	0900	Bucket				
MERCY 105	3+	Bell 407, no hoist	MFR	24/7	NVG: Ordered thru 911				
Alert 3	3+	MD-600N	Ashland	30 min.	Short Haul. Order thru Jackson Co.S.O.				

Incident Radio Communications Plan		1. Incident Name: Ramsey Fire	2. Date/Time Prepared: 08/23/2018 10:00	3. Operational Period: Night 8/23/2018
------------------------------------	--	----------------------------------	--	--

**4. Basic Radio Channel Utilization – Ramsey Fire**

System/Cache	Portable Channel	Function	Frequency	Assignment	Remarks
Fire Cache Tac 1	1	Tactical	151.235 TX/RX Tone 156.7	unassigned	
Fire Cache Tac 2	2	Tactical	151.250 TX/RX Tone 156.7	unassigned	
Fire Cache Tac 3	3	Tactical	151.355 TX/RX Tone 156.7	unassigned	
Fire Cache Tac 4	4	Tactical	151.385 TX/RX Tone 156.7	Secondary Air to Ground	
Fire Cache Tac 5	5	Tactical	151.415 TX/RX Tone 156.7	unassigned	
Fire Cache Tac 6	6	Tactical	151.460 TX/RX Tone 156.7	unassigned	
Fire Cache Tac 7	7	Tactical	151.475 TX/RX Tone 156.7	Air to Ground	
Fire Cache Tac 8	8	Tactical	151.490 TX/RX Tone 156.7	unassigned	
CMD 1	9	Repeater	Rx 151.445 Tx 158.895 Tx Tone 146.2	<b>Command 1</b> Fireline to ICP	FC Net 2 Repeater
CMD 2	10	Repeater	Rx 151.430 Tx 159.450 Tx Tone 146.2	<b>Command 2</b>	FC Net 2 Backup
Medford ODF	11	Repeater	Rx 151.175 Tx 159.4125 Rx/Tx Tone 179.9	Medford Dispatch I/A	Roxy Ann Repeater (ODF Mobile Dist Relay 16F)
White Net	12	Tactical	151.310 TX/RX Tone 156.7	I/A Air to Ground	
State Fire Marshal	13	Structural	154.280	Structural Tac	
VTAC 37	14	Structural	Rx 154.4525 Tx 158.7375 Tx Tone 136.5	Structural Repeater	
RV Tac 2	15	Tactical	159.240 TX/RX Tone 156.7	Initial Attack	ODF NICS
Air Guard	16	Emergency	168.625 TX Tone 110.9	Emergency	Air Guard

5. Prepared by: LeRoy E. Dwire (Communications Unit)

All frequencies are narrowband analogue.

## Weather Forecast

Spot Forecast for Ramsey Canyon...ODF  
National Weather Service Medford OR  
224 PM PDT Thu Aug 23 2018

Forecast is based on forecast start time of 1500 PDT on August 23.  
If conditions become unrepresentative...contact the National Weather Service.

...Gusty northwest winds and dry conditions this afternoon and evening...

...Breezy again Friday afternoon with higher humidity...

.DISCUSSION...A dry cold front is approaching the fire this afternoon, and will result in the windiest/driest conditions on the fire through Monday at least. Winds are increasing now and will peak later this afternoon and continue through the early evening. Humidity recoveries will trend higher tonight than last night. The most exposed, highest areas on the fire may feel some northerly wind through the night, but confidence is low on this, and we expect most of the fire to experience terrain-driven drainage winds. On Friday, winds will again be gusty but from a slightly more northerly direction. Humidity will trend higher Friday by 5 to 10 percent. Temperatures will be sharply cooler Friday compared to today. No rain is in the forecast for the next 7 days at least.

.REST OF TODAY...

Sky/weather.....Sunny. Smoke.  
Max temperature.....Around 87.  
Min humidity.....20 percent.  
Eye level winds....Northwest 3 to 5 mph with gusts to 8 mph.  
Wind (20 ft).....Northwest 10 to 14 mph with gusts to 22 mph.  
Mixing height.....6000 ft AGL.  
Transport winds....West-northwest around 10 mph.  
CWR.....0 percent.  
LAL.....1.

.TONIGHT...

Sky/weather.....Mostly clear. Smoke in the evening, then areas  
of smoke after midnight.  
Min temperature.....Around 52.  
Max humidity.....80 percent.  
Eye level winds....Northwest 3 to 5 mph with gusts to 8 mph early  
then north 1 to 3 mph in the late evening, then  
downslope/downvalley 0 to 2 mph after midnight.  
Wind (20 ft).....Northwest 10 to 14 mph with gusts to 22 mph early  
then north 4 to 8 mph in the late evening, then  
downslope/downvalley 1 to 3 mph after midnight.  
Mixing height.....5500 ft AGL decreasing to 500 ft AGL overnight.  
Transport winds....North around 8 mph.  
CWR.....0 percent.  
LAL.....1.

<b>MEDICAL PLAN</b>	1. INCIDENT NAME	2. DATE PREPARED	3. TIME PREPARED	4. OPERATIONAL PERIOD
	Ramsey Canyon Fire	08/23/18	1230	Night

**5. INCIDENT MEDICAL AID STATIONS**

MEDICAL AID STATIONS	LOCATION	PARAMEDICS	
		YES	NO
OSFM Task Force Blue and Orange			X

**6. TRANSPORTATION**

**A. Air Ambulances**

NAME	ADDRESS	PHONE	PARAMEDICS	
			YES	NO
Mercy Flights- Medford	BO-105	911	X	
Mercy Flights- Medford	Fixed Wing	911	X	

**B. Ground Ambulances**

NAME	ADDRESS	PHONE	PARAMEDICS	
			YES	NO
Mercy Flights	Jackson County	911	X	
Rogue River Fire	Jackson County	911	X	

**7. HOSPITALS**

NAME	ADDRESS	TRAVEL TIME		PHONE	HELIPAD		BURN CENTER	
		AIR	GRND		YES	NO	YES	NO
Rogue Regional	2825 Barnett Road, Medford Lat. 42 19 03 Long. 122 49 27			541-787-7000	X			X
Providence	1111 Crater Lake Ave, Medford Lat. 42 20 22 Long. 122 51 32			541-732-5000	X			X
Three Rivers	500 SW Ramsey Ave, Grants Pass Lat. 42 25 13 Long. 123 20 35			541-472-7000		X		X
Burn Center- Emmanuel	Portland, OR			800-222-1222	X		X	

**8. MEDICAL EMERGENCY PROCEDURES**

**1. LINE EMERGENCY:** Crew Supervisor to contact Division Supervisor with patient complaint/condition and location.

- Division Supervisor contacts:
  - Line EMT / PM
  - Communications Unit
- Communication Unit will clear command channel for emergency traffic
- Communications Unit contacts:
  - Medical Unit
  - Safety
  - Operations
- Division Supervisor will run medical emergency on command channel
- Medical Unit will:
  - Dispatch ground ambulance to nearest drop-point for ground transport only.
  - Or after patient pickup, dispatch ambulance to Heli-base for Medical AIR EVAC Flight if needed
  - Notify receiving hospital of injury status.

**1. CAMP EMERGENCY:** Contact Medical Unit with patient complaint/condition and location. Medical Staff will respond to stabilize incident:

- Medical Unit contacts:
  - Communications
  - Safety
  - Logistics
  - Operations
  - Crew Supervisor

**7. INCIDENT COMMUNICATIONS:**

- Command: Channel 9 & 10
- Air to Ground: Channel 7

**INJURY REPORTING PROCEDURES**

2. EMERGENCY IC \_\_\_\_\_

IS AN EMT WITH PATIENT: YES \_\_\_\_ NO \_\_\_\_

IS A PARAMEDIC WITH PATIENT: YES \_\_\_\_ NO \_\_\_\_

3. NATURE OF INJURY \_\_\_\_\_

AGE \_\_\_\_ WEIGHT \_\_\_\_ SEX: MALE \_\_\_\_ FEMALE \_\_\_\_

CONSCIOUS? YES \_\_\_\_ NO \_\_\_\_ BREATHING? YES \_\_\_\_ NO \_\_\_\_

PATIENT UNIT ID \_\_\_\_\_  
REMINDER: DO NOT GIVE PT NAME OVER RADIO

4. \_\_\_\_ RED-URGENT \_\_\_\_ YELLOW-PRIORITY \_\_\_\_ GREEN-ROUTINE

5. TRANSPORTATION REQUESTED BY: AIR \_\_\_\_ GROUND \_\_\_\_

6. ADDITIONAL NEEDS \_\_\_\_\_

8. LOCATION OF PATIENT \_\_\_\_\_  
Division, closest DP

POINT OF PICKUP \_\_\_\_\_

LAT \_\_\_\_\_ LONG \_\_\_\_\_

9. CONTINGENCY \_\_\_\_\_

ICS 206 5-17	9. PREPARED BY (MEDICAL UNIT LEADER) Scott West/Darren Bucich	10. REVIEWED BY (SAFETY OFFICER) Scott West/Darren Bucich
--------------	--	--

# HEALTH AND SAFETY MESSAGE

*SAFETY* starts with *YOU*

We are ALL accountable for SAFE behaviors

INCIDENT: Ramsey Canyon Fire

DATE: 8/23/2018 to 8/24/2018 Oper. Period: Night

## Major Hazards and Risks:

- Extreme Fire Conditions
- Steep Terrain and narrow roads
- Large amount of snags in and around fires
- Public in the Area of the Fire
- Area of urban interface
- Powerline through Fire Area
- Team Transition

## Fire Order of the Day – *Keep Informed on Fire Weather Conditions and Forecasts*

### Narrative:

- Have clear contact and communications with all air resources within your area.
- Make sure you are in good communication with all resources and with ICP.
- Drive Slow and have headlights on at all times.
- Be aware of working distance and position when working around equipment.
- Make sure LCES is in place at all times.
- Know where the Escape Routes and Safety Zones are and communicate and mark clearly.
- Say Hydrated. 4 Waters to 1 Gatorade
- Poison Oak & Snakes in Area
- Thick Smoke

## Watch Out Situation of the Day



2. IN COUNTRY NOT SEEN IN DAYLIGHT

## Look Up, Look Down, Look Around

- **Fuel Characteristics**- Assess prior to beginning operations
- **Fuel Moisture**- Read daily shift plan and assess on site
- **Fuel Temperatures**- Varies with exposure to direct sunlight
- **Terrain & Fuel Accumulations**- Scout prior to beginning operations and throughout the operational period
- **Wind**- Measure, observe and notice changes
- **Fire Behavior**- Monitor throughout the operational period
- **Safety**- Ask questions in unfamiliar situations. Keep your situation awareness up and say something if you have questions. The only dumb question is the one you did not ask.



# **BURN INJURY PLAN**

**Oregon Department of Forestry employees deserve the highest standard of burn care management when injured in the performance of their duties.**

Burns will be classified as either Minor or Serious. Treatment, transportation, and follow-up specialty care will be based upon the severity of the burn classification. Burns will be classified by the established Medical Unit on project fires. Unit Supervisors will classify burns received in any other situation. Do not delay medical treatment for Medical Unit or Unit Supervisor classification in emergency situations.

## **Minor Burns**

Superficial (first degree) burns involving less than 10% of body surface area that **does not** involve face, hands, feet, genitalia, joint areas, chemical burns, or burns with potential of respiratory complication.

The injured person in conjunction with the Medical Unit or Unit Supervisor will make treatment and transportation decisions for Minor Burns. Minor Burns requiring medical attention will be evaluated at a qualified hospital offering full service emergency care. Urgent care facilities and clinics are not an acceptable source for evaluation and treatment of burn injuries.

**NOTE:** All burns resulting from fire entrapments, direct flame contact, or superheated gases will be treated as a Serious Burn.

## **Serious Burns**

Burns involving more than 10% of body surface area or burns of the face, hands, feet, genitalia, joint areas, chemical burns, or burns with potential of respiratory complication.

All serious burns will be transported to the closest appropriate medical facility for initial evaluation and stabilization. After stabilization, patients with serious burns will be transported to a qualified regional burn center as soon as possible for evaluation, treatment, and follow-up.

The Incident Commander, Unit Supervisor or designee has the discretion to request that burn injuries, regardless of their apparent severity, be evaluated at a qualified regional burn center. The Incident Commander, Unit Supervisor or designee will assign a representative to maintain contact with the injured employee throughout their care.

## **REGIONAL BURN CENTERS**

### **OREGON, Portland**

Oregon Burn Center  
Legacy Emanuel Hospital  
2801 N. Gantenbein Ave  
Portland, OR 97227  
(503) 413-4232

### **WASHINGTON, Seattle**

University of Washington Burn Center  
Harborview Medical Center  
325 Ninth Avenue  
Seattle, WA 98104  
(206) 744-3000

### **CALIFORNIA, Sacramento**

Davis Regional Burn Center  
University of California  
2315 Stockton Boulevard  
Sacramento, CA 95817  
(916) 734-3636



## Incident Management Team: Incident Within An Incident Plan

The primary goal of this Plan is to allow incident personnel the guidelines necessary to *Locate, Triage, Extricate, Treat and Transport* all accident patients in as quick and safe a manner as possible. **The Division/Group Supervisor will initially oversee the emergency and activation of the Plan.** Radio communication will be on the “Command Frequency” and will take priority over all other radio traffic. **All Command and General Staff will be notified by the Safety Officer of what level (Green, Yellow or Red) the Incident is.**

G	Y	R	INCIDENT COMMANDER
			Ensures the Incident Within an Incident Plan is implemented
			Notifies Agency Administrator(s), Geographic Coordination Center, Salem Coordination Center, Salem Safety.
			Orders Investigator or Investigation Team
G	Y	R	OPERATIONS SECTION CHIEF
			Coordinate and support the Safety Officer’s investigation and involved Law Enforcement agencies.
			Coordinate with Safety for ground ambulance transport, medical supplies and other medical needs.
G	Y	R	AVIATION EMERGENCIES:
			Air Attack, Air Operations Branch Director coordinate, as appropriate. OSC and IMT provide Support.
			Implement ODF Aviation Mishap Response Guide and Checklist & Heli-Base Emergency Plan, as appropriate.
			Coordinate with Air Operations Branch Director for notification to appropriate agencies.
G	Y	R	DIVISION/GROUP SUPERVISOR
			Will respond directly to the accident/incident scene and assume command until relieved, or clearly designate another capable person to be responsible, on your behalf.
			Remain aware of surroundings. Delegate Division/Group oversight to other qualified personnel, as needed.
			Size-up the Incident (Nature of Accident, Number/Type of Resources, Location, Safety for Incoming Personnel)
			Coordinate “Line EMT” response to the accident (Utilize Closest EMT’s).
			Identify Location and Lat/Long coordinates of site.
			Identify Medical treatment and transportation needs.
			Begin “TRIAGE” (PINK pages of the Incident Response Pocket Guide – IRPG)
			Determine and initiate treatment and transportation needs.
			Evaluate special needs (Law Enforcement, Heavy Rescue, Haz Mat, fire protection or suppression)
			Coordinate with Air Attack for Air-Medical transportation needs
			Notify OSC and SOF of all accidents/incidents.
			Preserve the scene for accident investigation and begin documentation.
G	Y	R	SAFETY OFFICER
			Maintain Overall Incident Safety. Provide coordination between the incident and other IMT sections and units.
			Implement the Incident Within an Incident Plan for all incidents, providing coordination between the on-scene Division/Group and other IMT sections and units.
			Ensure appropriate incident organization.
			Coordinate and oversees line EMT& Paramedic response to the accident site.
			Provide for immediate extrication and medical triage, treatment and transportation.
			Request a Size-up of the situation. Number of people involved and their medical condition (Triage). Nature of the incident (auto/aircraft accident, burn over, etc.) and number of crews, vehicles or aircraft involved.
			Coordinate with Air Operations Branch Director for Air-Medical transportation needs.
			Ensure air/ground ambulances coordinate patient transportation locations with the Medical Unit Leader
			Identify special needs, i.e. Law Enforcement, Heavy Rescue, and Haz Mat response.
			Evaluate safety issues at all accident/incident sites and work with Division/Group Supervisor in charge to mitigate them.
			Initiate the investigation of the emergency and coordinate with the IC to request the appropriate investigation resources/teams.
			Secure witness names, initial statements and all evidence relating to the accident.
			Coordinate with the Logistics Section for on scene support and location of receiving hospitals for patients.
			Coordinate investigation with comps/claims unit.
			Obtain sketches and photos of emergency scene.
			Assist Medical Unit Leader with communications with the hospital and ambulance service.



<b>G</b>	<b>Y</b>	<b>R</b>	<b>LIAISON</b>
			Assist the Medical Unit Leader as needed
			Insure coordination with investigating entities
			Assist other positions as needed
			Coordinate with cooperators and key stakeholders
<b>G</b>	<b>Y</b>	<b>R</b>	<b>INFORMATION OFFICER</b>
			Collect pertinent emergency information.
			Coordinate information release with Incident Commander and Agency Public Affairs Officer.
			Assign Information Officer(s) to field media inquiries at accident scene, med-evac area and hospital.
			Coordinate with Liaison and Safety Officer regarding roadblocks, evacuations and emergency medical information needs.
			No personal information shall be released until approved by Incident Commander. Coordinate with local Agency.
			Coordinate with employee's home unit.
<b>G</b>	<b>Y</b>	<b>R</b>	<b>PLANNING SECTION CHIEF</b>
			Complete the 209 and coordinate with IIO to include accident information and status in the daily morning fire update report sent to Salem Coordination Center.
			Coordinate Critical Incident Stress Debriefing for effected personnel.
			Provide and coordinate a Family Liaison with supporting agencies, (Home Unit, Red Cross, 100 Club, Chaplin)
			Provide Briefing at ICP for Incident Personnel
			Ensure all communications regarding the accident and actions are well-documented.
<b>G</b>	<b>Y</b>	<b>R</b>	<b>LOGISTICS SECTION CHIEF</b>
			Assume command and implement Incident Within Incident Plan for incidents within the ICP or Camp in absence of SOF
			Ensure maintenance of accurate radio logs, use the Injury Communications Protocol Form (Logistics Manual Appendix I – 10) until the emergency has terminated. Ensure Safety Officer receives copies in a timely manner.
			Establish emergency radio communications, on a different frequency, if requested by scene IC.
			Provide ground or air transportation, depending upon need. Coordinate with Air Operations Branch Director.
			Order needed resources for the emergency
			Monitor support functions and assess additional needs.
			Coordinate removal of damaged vehicles.
			Coordinate Security with Team Liaison and Operations Section Chief as necessary.
			Locate and secure personal effects of injured personnel.
<b>G</b>	<b>Y</b>	<b>R</b>	<b>FINANCE SECTION CHIEF</b>
			Coordinate with Agency Administrative Officer(s) and Agency Risk Manager.
			Coordinate Compensation/Claims Unit response (Risk Management Forms).
			Notify Home Unit or Office of injured person(s). (Agency or Contractor)

123°0'W

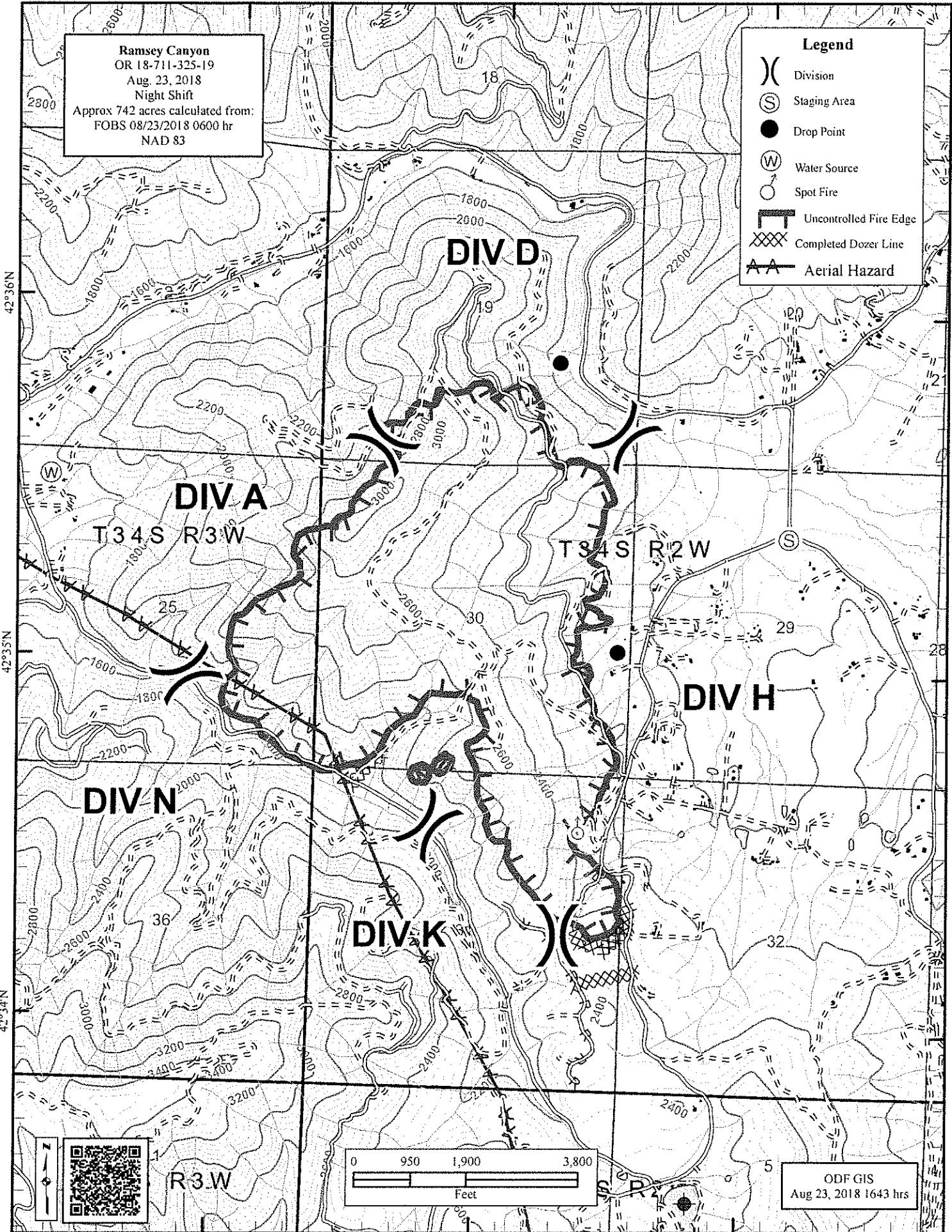
122°59'W

122°58'W

Ramsey Canyon  
 OR 18-711-325-19  
 Aug. 23, 2018  
 Night Shift  
 Approx 742 acres calculated from:  
 FOBS 08/23/2018 0600 hr  
 NAD 83

**Legend**

- ( ) Division
- (S) Staging Area
- Drop Point
- (W) Water Source
- Spot Fire
- ▬ Uncontrolled Fire Edge
- ▨ Completed Dozer Line
- AA Aerial Hazard



ODF GIS  
 Aug 23, 2018 1643 hrs





## MEDICAL EMERGENCY PROCEDURES

- 1. LINE EMERGENCY:** Crew Supervisor to contact Division Supervisor with patient complaint/condition and location.
- Division Supervisor contacts:
    - Line EMT / PM
    - Communications Unit
  - Communication Unit will clear command channel for emergency traffic
  - Communications Unit contacts:
    - Medical Unit
    - Safety
    - Operations
  - Division Supervisor will run medical emergency on command channel
  - Medical Unit will:
    1. Dispatch ground ambulance to nearest drop-point for ground transport only.
    2. Or after patient pickup, dispatch ambulance to Heli-base for Medical AIR EVAC Flight if needed
    3. Notify receiving hospital of injury status.

## INJURY REPORTING PROCEDURES

**2. EMERGENCY IC** \_\_\_\_\_

IS AN EMT WITH PATIENT: YES \_\_\_\_ NO \_\_\_\_

IS A PARAMEDIC WITH PATIENT: YES \_\_\_\_ NO \_\_\_\_

**3. NATURE OF INJURY** \_\_\_\_\_

AGE \_\_\_\_ WEIGHT \_\_\_\_ SEX: MALE \_\_\_\_ FEMALE \_\_\_\_

CONSCIOUS? YES \_\_\_\_ NO \_\_\_\_ BREATHING? YES \_\_\_\_ NO \_\_\_\_

PATIENT UNIT ID \_\_\_\_\_

REMINDER: DO NOT GIVE PT NAME OVER RADIO

**4.**  
 **RED / PRIORITY 1** Life or limb threatening injury or illness. Evacuation need is **IMMEDIATE**

*Ex: Unconscious, difficulty breathing, bleeding severely, 2o – 3o burns more than 4 palm sizes, heat stroke, disoriented.*

**YELLOW / PRIORITY 2** Serious Injury or illness. Evacuation may be **DELAYED** if necessary.

*Ex: Significant trauma, unable to walk, 2o – 3o burns not more than 1-3 palm sizes.*

**GREEN / PRIORITY 3** Minor Injury or illness. Non-Emergency transport

*Ex: Sprains, strains, minor heat-related illness.*

**5. TRANSPORTATION REQUESTED BY:** AIR \_\_\_\_ GROUND \_\_\_\_

**6. ADDITIONAL NEEDS** \_\_\_\_\_

**7. INCIDENT COMMUNICATIONS:**

- Command: Channel 9 & 10
- Air to Ground: Channel 7

**8. LOCATION OF PATIENT** \_\_\_\_\_

Division, closest DP

POINT OF PICKUP \_\_\_\_\_

LAT \_\_\_\_\_ LONG \_\_\_\_\_

**9. CONTINGENCY** \_\_\_\_\_