

# RAMSEY CANYON FIRE

## Incident Action Plan



"STEWARDSHIP IN FORESTRY"

**Night Shift**  
**Sunday, August 26, 2018**  
**1800-0600**

**Incident Order Number**  
**OR-711S-325-19**

**Incident Fire Number**  
**711325-19**



# ICS-202 INCIDENT OBJECTIVES

1. Incident Name Ramsey Canyon Fire	2. Date Prepared 8/26/2018	3. Time Prepared 1400
4. Operational Period <b>NIGHT SHIFT</b> <b>SUNDAY</b>	<b>8/26/18-8/27/18</b> <b>1800-0600</b>	

5. General Control Objectives for the Incident (include alternatives)

**Incident Objectives**

- Provide for the safety of firefighters and the public through deliberate risk management, implementation of appropriate mitigations and clear understanding of assignments.
- Protect private lands, communities, timber, infrastructure and other values at risk by minimizing the size of the fire.
- Protect structures within delegated areas by preposition and use of conflagration resources. Re-evaluate, triage, and perform structure protection as appropriate.
- Provide initial attack within the designated response area and support local IA efforts.
- Develop and deliver accurate and timely fire information to landowners, the public, and cooperators, through the use of personal contacts, social media, public meetings, and web-sites as needed.
- Be fiscally responsible by continuing to evaluate incident needs and make appropriate adjustments.
- Treat all personnel, landowners, cooperators and the public with dignity and respect. Promote a positive and harassment free work environment.
- Provide for the protection of natural and cultural resources during suppression and suppression repair activities, by working in consultation with Resource Advisors and following the special instructions as detailed in the ICS204 for each Division.

**Operational Objectives**

- Utilize strategies and tactics that will minimize acres burned, and keep the fire:
  - o East of East Evans Creek/West Evans Creek Road
  - o North of Elkhorn Butte
  - o West of Meadows Road
  - o South of Evans Creek
- Implement suppression tactics in coordination with Resource Advisors on BLM lands to minimize impacts to resource values, threatened and endangered species, and cultural sites.

6. Weather Forecast for Period  
See attached weather forecast.

7. General Safety Message  
See attached safety message.

8. Attachments (mark if attached)

<input checked="" type="checkbox"/> Organization List - ICS 203	<input checked="" type="checkbox"/> Fire Weather Forecast	<input checked="" type="checkbox"/> Incident Map
<input checked="" type="checkbox"/> Div. Assignment Lists - ICS 204	<input checked="" type="checkbox"/> Fire Behavior Forecast	<input type="checkbox"/> Fire Suppression Repair Plan
<input checked="" type="checkbox"/> Communications Plan - ICS 205	<input checked="" type="checkbox"/> Air Operations Summary - ICS 220	<input type="checkbox"/> Traffic Plan
<input checked="" type="checkbox"/> Medical Plan - ICS 206	<input checked="" type="checkbox"/> Safety Message	

9. Prepared by C. L. Bays	10. Approved by 
------------------------------	---

# ICS-203 Organizational Assignment List

1. NAME OF INCIDENT		2. DATE PREPARED	3. TIME PREPARED
Ramsey Canyon Fire		8/26/2018	1300
4.1 SHIFT	4.2 DAY	4.3 OPERATIONAL PERIOD (DATE)	4.4 ESTIMATED PERIOD (TIME)
NIGHT SHIFT	SUNDAY	8/26/18-8/27/18	1800-0600
Position	Name	Position	Name
<b>5. Incident Commander &amp; Staff</b>		<b>9. Operations Section</b>	
Incident Commander	Hessel, Joe (ODF) / Hallman, Les (OSFM)	Chief	Turchetto, Jeff (ODF)
Deputy	Smith, Greg / Lighty, Lance (OSFM)	Chief	Stafford, Vince (OSFM)
Deputy	Williams, Tom(t) (OSFM)	Plans Chief	Barney, Chris (OSFM)
Safety Officer	West, Scott (ODF) / Bucich, Darren (OSFM)	<b>9a. Branch I Divisions/Groups</b>	
Public Information Officer	Lertora, Ashley (ODF) / Myers, Stefan (OSFM)	Branch Director	
Public Information Officer	DeRuyter, Justin (OSFM) / Zoutendijk, Ger(t) (OSFM)	Deputy	
Liaison Officer	Goff, Larry (ODF)	Division/Group	A/N Storksens, Nils / Cox, Alex(t)
Law Enforcement Officer	Warden, Steve (OSFM)	Division/Group	D Hill, Kevin
		Division/Group	H Vigil, Wayne
		Division/Group	K Foshee, Jason(t)
		Staging Area Manager	
<b>6. Agency Representatives</b>		<b>9b. Branch II Divisions/Groups</b>	
Agency	Name	Branch Director	
ODF	Larson, Dave	Deputy	
ODF (deputy)	Swearingen, Scott	Division/Group	
OSFM	Walker, Jim	Division/Group	
BLM	Mastrofini, Kristi	Division/Group	
BLM READ	Worman, Aaron / Mason, Allen	Division/Group	
Jackson County Sheriff	Kennedy, Rick	Division/Group	
Jackson/Josephine Co. EM	Rubricht, Sara	Division/Group	
Hancock	Cummings, Ken	Staging Area Manager	
Murphy	Groves, Jake	<b>9c. Structural Branch</b>	
Weyerhaeuser	Bradac, Brian	Branch Director	
Lone Rock	Erickson, Dave	Deputy	
Cow Creek Tribe	DePew, Tracy / Coates, Kelly	Division/Group	
		Division/Group	
		Division/Group	
		Staging Area Manager	
<b>7. Planning Section</b>		<b>9d. Air Operations</b>	
Chief	Ennega, Jeff (ODF) / Pedersen, Tad (OSFM)	Branch Director	Laugle, Neal
Deputy	Cane, Jason (OSFM)	Air Attack Supervisor	Leach, Mike
Plans Assistant	Bangs, Cullen (ODF)		
Resources Unit	Kiser, Colleen (ODF)		
Resources Unit	Heppel, Chris (OSFM)		
Situation Unit	Moore, Barbara (ODF)		
GISS	Nile, Emmor (ODF) / Hawksworth, John (ODF)		
FOBS	Smith, Randy (ODF)	<b>10. Finance Section</b>	
FBAN	Ferguson, Brandon(t) (ODF)	Chief	Larson, Rachael (ODF)
IMET	Murdoch, Greg (NWS)	Chief	Kometz, Jamie (OSFM)
		Procurement	Dehut, Keith (ODF)
		Time Unit	Simonton, Karen (ODF)
		Finance Assistant	Albright, Sande (ODF)
<b>8. Logistics Section</b>			
Chief	Hiatt, Malcolm (ODF) / Shanders, Kevin (OSFM)		
Assistant	McBride, Matt (ODF) / Bregman, Steve (OSFM)		
<b>Support Branch</b>			
Director	Rudd, Chris (ODF)		
Supply Unit	Hepler, Jeff (ODF)		
Ordering Manager	Benda, Barb (ODF) / Martinmass, Freedom (ODF)		
Ground Support Unit	Thompson, Dave (ODF)		
Communications Unit	Dwire, LeRoy (ODF) / Heuchert, Rick (OSFM)		
Communications Unit	Woodley, Brian (OSFM)		
<b>Service Branch</b>			
Director	Sleight, Dawn (ODF)		
Food Unit	DeLong, Vicki (ODF)		
Prepared By: <u>C.H. B...</u>		Approved By: <u>[Signature]</u> <u>[Signature]</u>	

# ICS-204 Division Assignment List

3. Incident Name <b>Ramsey Canyon Fire</b>		1. Branch <b>I</b>	2. Division/Group <b>A/N</b>
<b>NIGHT SHIFT</b>	<b>SUNDAY</b>	<b>8/26/18-8/27/18</b>	<b>1800-0600</b>

## 6. Operations Personnel

Operations Chief	Turchetto, Jeff	Division/Group Supervisor	Storksens, Nils / Cox, Alex(t)
Safety Officer	West, Scott	Air Attack Supervisor	Leach, Mike

## 8. Resources Assigned this Period

Strike Team/Task Force Resource Designator	Leader	Number Persons	14th Day	21st Day	30th Day	Comments	R&R Complete
O-18 TFLD	Haile, Nick	1	9/4				
O-6 HEQB(t)	Downs, Rufus	1	9/4				
C-2 HC2 MP Forestry	Moreno, Enrique	20	9/4				
C-4 HC2 Ponderosa	Bencomo, Sergio	20				SEE CHECK IN	
C-512 HC2 Birrueta	Ibarra, Jose	20	9/7				
E-557 ENG3 Arizona	McGovern, Tyler	4	9/3				
E-17 ENG6 Ben Taylor	Serrano, Jose	2	9/5			Double Shift - SEE CHECK IN	
E-515 ENG6 North Pacific	Teel, Tim	3	9/7				
E-538 ENG6 Arizona	Middleton, Chris	4	9/2				
E-548 ENG6 Arizona	Revovato, Mike	3	9/3				
E-556 ENG6 Arizona	Vallejos, Robert	3	9/3				
E-21 WAT1 Siskiyou Cascade	Peterson, Rick	1				SEE CHECK IN	
E-6 DOZ2 LA Fire	Patterson, Brandon	1	9/5				
National Guard TAP6	Traffic Control Point #4						

## 7. Control Operations

Secure, hold, and patrol containment lines.  
 Grid and patrol for spot fires.  
 Patrol around structures.  
 Mop up 50 feet from perimeter.

## 8. Special Instructions

Be careful not to disturb cultural resources or artifacts. If any artifacts are spotted do not touch or remove them. Report the location (with a picture if possible) to you Division Supervisor to forward to the Liason Officer.

## 9. Division/Group Communication Summary

Function	Frequency	Tone	Channel	Function	Frequency	Tone	Channel
Command RX	151.445	146.2	9	Logistics			
TX	158.895						
Tactical Div/Group	151.235	156.7	1	Air to Ground	151.475	156.7	7

Prepared by: *Cil-Bry5* Resource Unit Leader  
 Approved by: *[Signature]* Plans Section Chief  
 Date: *8/26/18*





# ICS-204 Division Assignment List

3. Incident Name <b>Ramsey Canyon Fire</b>	1. Branch <b>I</b>	2. Division/Group <b>K</b>
<b>NIGHT SHIFT</b>	<b>SUNDAY</b>	<b>8/26/18-8/27/18</b>
	<b>1800-0600</b>	


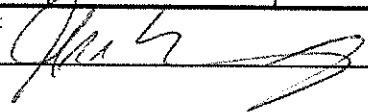
5. Operations Personnel			
Operations Chief	Turchetto, Jeff	Division/Group Supervisor	Foshee, Jason(t)
Safety Officer	West, Scott	Air Attack Supervisor	Leach, Mike

6. Resources Assigned this Period							
Strike Team/Task Force Resource Designator	Leader	Number Persons	14th Day	21st Day	30th Day	Comments	R&R Complete
O-4 TFLD	Petruncia, Mike	1	9/4				
O-5 HEQB(t)	Carpenter, Justin	1	9/4				
E-12 ENG6 Big Elk	Cardinal, Phil	2				Double Shift - SEE CHECK IN	
E-24 ENG6 Rogue Fire	Kiser, Jared	2	9/5				
E-519 ENG6 Cooper Contracting	Cutshall, Will	3	9/7				
E-537 ENG6 Arizona	Huddleston, Eric	4					
E-555 ENG6 Arizona	Haney, Tom	4	9/3				
E-2 WAT2 Estremado	Day, Jim	1	9/5				
E-11 DOZ2 Central Pipeline	Banwart, Skyler	1				Double Shift - SEE CHECK IN	
National Guard TAP 6	Traffic Control Point #1						

**7. Control Operations**  
Secure, hold, and patrol containment lines.  
Grid and patrol for spot fires.  
Patrol around structures.  
Mop up 50 feet from perimeter.

**8. Special Instructions**  
Be careful not to disturb cultural resources or artifacts. If any artifacts are spotted do not touch or remove them. Report the location (with a picture if possible) to you Division Supervisor to forward to the Liason Officer.

9. Division/Group Communication Summary							
Function	Frequency	Tone	Channel	Function	Frequency	Tone	Channel
Command	RX 151.430	146.2	10	Logistics	151.475	156.7	7
	TX 159.450						
Tactical Div/Group	151.415	156.7	5	Air to Ground	151.475	156.7	7

Prepared by:  Resource Unit Leader      Approved by:  Plans Section Chief  
Date: 8/26/18

# AIR OPERATIONS SUMMARY

Prepared By: Dan Menk      Incident: **RAMSEY CANYON**      DATE: **08/26/2018**      TFR? **Y**

Prepared: 08/25/2018      SUNRISE: 06:31      SUNSET: 19:55      PUMPKIN TIME: 2025      TFR radius: 5 nmi

REMARKS: High Power Transmission Lines in/near the fire area      Surface to: 9000ft

Beagle Helibase      5400 Beagle Rd, White City      42 32.2 by 122 54.4 elevation 1425 MSL      Center Lat: 42 34.70

Long: 122 59.61

PERSONNEL:	PHONE:	FREQUENCIES	RECEIVE	tone	TRANSMIT	tone	REMARKS
AODB Neal Laugle	503-580-4942	A/A Fixed Wing/TFR	133.4250		same		
ATGS Mike Leach	541-219-0477	A/A Rotor	118.1250		same		
ATGS Herb Johnson		A/G Tac 7	151.4750	156.7	same	same	
ATGS (t) Robert Franson	541-297-7470	A/G Secondary Tac 4	151.3850	156.7	same	same	
HEB1 Dan Menk	541-731-4569	TOLC/Deck	163.1750		same		
HEB1(t) Kelly Foster	503-586-6944	A/A Initial Attack	124.4750		same		SWO Initial Attack
HMGB Terry Owen	601-660-6316	A/G Initial Attack	151.3100	156.7	same	156.7	TX tone req'd "WHITE NET"
HMGB(t) Brent Chapman	541-816-7162	Disp/FF ODF Medford	151.1750	179.9	same	179.9	"Medford ODF" (Roxy Ann rpttr)
HMGB(t) Cameron Dupree	541-840-9904	Disp/FF ODF G.P.	151.1450	179.9	same	179.9	"Grants Pass" (Sexton rpttr)
ABRO Stephanie Beall		National Flgt Follow	168.6500	110.9	168.6500	110.9	Use on Federal fires
		Air Guard	168.6250	none	168.6250	110.9	Emergencies. Monitor always.

## HELICOPTERS: Rappel ship ordered by ODF dispatch thru MICC

FAA#	TYPE	MAKE/MODEL	BASE	AVAIL	REMARKS	TYPE/ID	BASE	AVAIL	REMARKS
N84CK	3	206B-3	Beagle	09:00	Air Attack Platform IA	T-62	RDM	0900	
N350AW	3	AS350 B3	Beagle	09:00	With Helitack Crew				
N9047C	3	Bell 206 L4	Beagle	09:00	Air Attack Platform IA				
N12AT	3	Bell 206 B3	Beagle	09:00					
N669KB	2	UH-1F	Beagle	09:00	Bucket/Restricted	52U	GP	1000	
N284MM	2	UH-1F	Beagle	09:00	Bucket/Restricted				
N626CK	1	S-61 N	Beagle	09:00	Tank				
N618CK	1	S-61 NM	White City	09:00	Bucket				
MERCY 105	3+	Bell 407, no hoist	MFR	24/7	NVG: Ordered thru 911				
Alert 3	3+	MD-600N	Ashland	30 min.	Short Haul. Order thru Jackson Co.S.O.				

Dispatch must order lead planes



# Incident Radio Communications Plan

## 4. Basic Radio Channel Utilization – Ramsey Canyon Fire

System/Cache	Portable Channel	Function	Frequency	Assignment	Remarks
Fire Cache Tac 1	1	Tactical	151.235 TX/RX Tone 156.7	Div. A / N	
Fire Cache Tac 2	2	Tactical	151.250 TX/RX Tone 156.7	Div. D	
Fire Cache Tac 3	3	Tactical	151.355 TX/RX Tone 156.7	Div. H	
Fire Cache Tac 4	4	Tactical	151.385 TX/RX Tone 156.7	Secondary Air to Ground	
Fire Cache Tac 5	5	Tactical	151.415 TX/RX Tone 156.7	Div. K	
Fire Cache Tac 6	6	Tactical	151.460 TX/RX Tone 156.7	unassigned	
Fire Cache Tac 7	7	Tactical	151.475 TX/RX Tone 156.7	Air to Ground Primary	
Fire Cache Tac 8	8	Tactical	151.490 TX/RX Tone 156.7	unassigned	
CMD 1	9	Repeater	Rx 151.445 Tx 158.895 Tx Tone 146.2	Command 1 Fireline to ICP	FC Net 2 Repeater Div. A / N
CMD 2	10	Repeater	Rx 151.430 Tx 159.450 Tx Tone 146.2	Command 2 Fireline to ICP	FC Net 2 Backup Div. D / H / K
Medford ODF	11	Repeater	Rx 151.175 Tx 159.4125 Rx/Tx Tone 179.9	Medford Dispatch I/A	Roxy Ann Repeater (ODF Mobile Dist Relay 16F)
White Net	12	Tactical	151.310 TX/RX Tone 156.7	I/A Air to Ground	
State Fire Marshal	13	Structural	154.280	Structural Tac	
VTAC 37	14	Structural	Rx 154.4525 Tx 158.7375 Tx Tone 136.5	Structural Repeater	
RV Tac 2	15	Tactical	159.240 TX/RX Tone 156.7	Initial Attack	ODF NICS
Air Guard	16	Emergency	168.625 TX Tone 110.9	Emergency	Air Guard

5. Prepared by: LeRoy E. Dwire (Communications Unit)

All frequencies are narrowband analogue.

1. Incident Name: Ramsey Canyon Fire	2. Date/Time Prepared: 08/26/2018 10:00	3. Operational Period: Night 8/26/2018
---	--	--



## INCIDENT Weather Forecast



**FORECAST NO:** 06

**NAME OF FIRE:** Ramsey Canyon

**PREDICTION:** Operational Night Shift

**UNIT:** Oregon Dept. of Forestry

**SHIFT DATE:** Sunday night 08/26-27/2018

**SIGNED:** Greg Murdoch *Greg Murdoch*

**Incident Meteorologist (IMET)**

**TIME AND DATE**

**FORECAST ISSUED:** Sunday, 08/26/2018 at 1400

---

**WEATHER DISCUSSION:** Another night with very good recovery as a marine influence holds. A similar wind pattern is expected with increased northerly winds through mid-late evening. However a brief shower is possible late tonight and early Monday with a few hundredths of an inch possible. It will turn drier and warmer Monday afternoon, but even more so Tuesday.

---

**WEATHER FORECAST TONIGHT:**

**WEATHER:** Areas of smoke, otherwise partly to mostly cloudy. A light shower possible after midnight.

**TEMPERATURES:** Lows 50-55.

**MAXIMUM HUMIDITY:** 85-95%.

**20 FT WINDS:**

**RIDGETOP** – North 8-11 mph a few gusts near 16 mph til 1230 AM, then north less than 10 mph.

**SLOPE/VALLEY** – Terrain driven 3-6 mph, gusts up to 15 mph in aligned valleys.

**HAINES INDEX:** 3 (Very low).

**STABILITY/INVERSION:** Poorly developing by midnight.

---

**MONDAY:** A light early morning shower possible. Otherwise warmer and drier. Highs 75-80. Minimum humidity 27-37%. Ridgetop winds north 6-10 mph otherwise terrain driven 3-5 mph. Haines Index 4 (Low).

**MONDAY NIGHT:** Partly cloudy. Warmer, lows 53-58. Maximum humidity 65-75%. Northeast 6-10 mph.

---

**EXTENDED...**

**TUESDAY:** Much warmer and drier. Mostly sunny. Highs 82-87. Minimum RH 17-22%. Northeast wind 7-11 mph.

**WEDNESDAY-THURSDAY:** Temperatures back off a few degrees and humidity trends up. Highs 75-85. Humidity in the 20-30% range. Northwest wind 5-10 mph.

**Monday 27<sup>th</sup> Sunrise:** 631 AM PDT

**Monday 27<sup>th</sup> Sunset:** 754 PM PDT

## FIRE BEHAVIOR FORECAST

<b>FORECAST NUMBER:</b> 06	<b>INCIDENT TYPE:</b> Wildfire
<b>FIRE NAME:</b> Ramsey Canyon	<b>OPERATIONAL PERIOD:</b> August 26, 2018 Night
<b>DATE ISSUED:</b> August 26, 2018	<b>TIME ISSUED:</b> 1400
<b>UNIT:</b> OR-MED	<b>PREPARED BY:</b> Brandon Ferguson FBAN-t

### INPUTS

**WEATHER SUMMARY:**

\*\*\*\*\*See Fire Weather Summary\*\*\*\*\*

**FUELS & FUEL MOISTURE:**

- Mixed aged Douglas-fir and brush in the lower elevations.

**Fine Fuels 5-8%, based on shading. 100hr (1"-3") 11%; 1000hr (3"+) 10%**

### OUTPUTS - FIRE BEHAVIOR

**GENERAL:**

**Tonight:** Expect moderate to active behavior this afternoon and into this evening until around 2100 with the forecasted increase in winds. Inversion will be poorly developed in the lower elevations occurring around midnight. Cooler temperatures and high humidity recoveries will diminish fire behavior to moderate levels. Combined wind and terrain influences will have more of an effect on any unchecked fire, and will increase fire behavior as fuels allow. Short uphill runs are possible where wind and topography align along upper ridges, and when fire intensity increases. Once again, be aware of fuel type changes and expect faster rates of spread in the brush and grass versus timber.

**Fire Behavior based on worst case from 1400-2200 predicted weather.**

Fuel Type	<u>Low-Elevation ROS</u>	<u>Low-Elevation FL</u>	<u>Spotting Distance</u>	<u>Ridgetop ROS</u>	<u>Ridgetop FL</u>
<b>Grass/Shrub (GS2)</b>	30-35 Feet/Minute	5-6 Feet	Up to .4 Miles	40-45 Ft/Min	6-7 Feet
<b>Timber w/ Understory (TU5)</b>	10-15 Feet/Minute	8-9 Feet	Up to .4 Miles	15-20 Ft/Min	9-10 Feet
<b>Brush (FM5)</b>	40-45 Feet/Minute	7-8 Feet	Up to .4 Miles	50-55 Ft/Min	8-9 Feet

**Probability of Ignition (PIG): 40-60% during the peak of the burning period.**

**SPECIFIC:**

**South Side Div. H/K/N:** Terrain and wind alignments will provide for moderate activity and fire spread this evening. Primary concerns will be spotting potential from interior burning snags in the mid and upper slopes. Main fire spread concerns will be South/Southeast (DIV. H/K). Heavy rollers and large burning snags could pose threats along the SW (DIV. K/N) and near the A/N Division break. Expect spread to continue toward and into southern drainages if allowed. Ramsey Canyon is well aligned to forecasted wind directions. Any unchecked fire line has potential to spread down canyon.

Lower elevations of the fire will still be partially sheltered from the northwest winds by Hull Mountain. If the fire spreads to the Southeast into meadows and becomes established, possibility exists for prevailing/gusty winds to help push the fire towards the South and Southwest.

**North Side Div. A/D:** The fire will continue to back down and clean up unburned fuels along the North (DIV.A) and Northeast (DIV.D). Expect rollout to be a problem and subsequent uphill runs where fuels and slopes align. Upper slope fire intensity can create wind variability within drainages. Spotting across Evans Creek could be possible with the heavier winds near the A/N Division break, and along Division D.

**AIR OPERATIONS:** Valleys may be smoky in the morning. Afternoon winds should clear out smoke.

**SAFETY:** Wind can accelerate fire spread more than Terrain tonight. Fire aligned with wind and slope will produce the most active fire behavior.

**\*\*Base all action on current and expected fire behavior\*\***

<b>MEDICAL PLAN</b>	1. INCIDENT NAME	2. DATE PREPARED	3. TIME PREPARED	4. OPERATIONAL PERIOD
	<b>Ramsey Canyon Fire</b>	08/26/18	1130	Night

**5. INCIDENT MEDICAL AID STATIONS**

MEDICAL AID STATIONS	LOCATION	PARAMEDICS	
		YES	NO
Ramsey Canyon Fire Camp	Ramsey Canyon Fire Camp	X	
Med Transport (M-23)	Meadows Staging	X	
Line Medic	Bybee Springs Staging	X	

**6. TRANSPORTATION**

**A. Air Ambulances**

NAME	ADDRESS	PHONE	PARAMEDICS	
			YES	NO
Mercy Flights- Medford	BO-105	911	X	
Mercy Flights- Medford	Fixed Wing	911	X	

**B. Ground Ambulances**

NAME	ADDRESS	PHONE	PARAMEDICS	
			YES	NO
Mercy Flights	Jackson County	911	X	
Rogue River Fire	Jackson County	911	X	

**7. HOSPITALS**

NAME	ADDRESS	TRAVEL TIME		PHONE	HELIPAD		BURN CENTER	
		AIR	GRND		YES	NO	YES	NO
<b>Rogue Regional</b>	2825 Barnett Road, Medford Lat. 42 19 03 Long. 122 49 27			541-787-7000	X			X
<b>Providence</b>	1111 Crater Lake Ave, Medford Lat. 42 20 22 Long. 122 51 32			541-732-5000	X			X
<b>Three Rivers</b>	500 SW Ramsey Ave, Grants Pass Lat. 42 25 13 Long. 123 20 35			541-472-7000		X		X
<b>Burn Center- Emmanuel</b>	Portland, OR			800-222-1222	X		X	

**8. MEDICAL EMERGENCY PROCEDURES**

**1. LINE EMERGENCY:** Crew Supervisor to contact Division Supervisor with patient complaint/condition and location.

- Division Supervisor contacts:
  - Line EMT / PM
  - Communications Unit
- Communication Unit will clear command channel for emergency traffic
- Communications Unit contacts:
  - Medical Unit
  - Safety
  - Operations
- Division Supervisor will run medical emergency on command channel
- Medical Unit will:
  - Dispatch ground ambulance to nearest drop-point for ground transport only.
  - Or after patient pickup, dispatch ambulance to Helibase for Medical AIR EVAC Flight if needed
  - Notify receiving hospital of injury status.

**1. CAMP EMERGENCY:** Contact Medical Unit with patient complaint/condition and location. Medical Staff will respond to stabilize incident:

- Medical Unit contacts:
  - Communications
  - Safety
  - Logistics
  - Operations
  - Crew Supervisor

**7. INCIDENT COMMUNICATIONS:**

- Command: Channel 9 & 10
- Air to Ground: Channel 7

**INJURY REPORTING PROCEDURES**

**2. EMERGENCY IC** \_\_\_\_\_

IS AN EMT WITH PATIENT: YES \_\_\_\_ NO \_\_\_\_

IS A PARAMEDIC WITH PATIENT: YES \_\_\_\_ NO \_\_\_\_

**3. NATURE OF INJURY** \_\_\_\_\_

AGE \_\_\_\_ WEIGHT \_\_\_\_ SEX: MALE \_\_\_\_ FEMALE \_\_\_\_

CONSCIOUS? YES \_\_\_\_ NO \_\_\_\_ BREATHING? YES \_\_\_\_ NO \_\_\_\_

PATIENT UNIT ID \_\_\_\_\_  
REMINDER: DO NOT GIVE PT NAME OVER RADIO

**4. \_\_\_\_ RED-URGENT \_\_\_\_ YELLOW-PRIORITY \_\_\_\_ GREEN-ROUTINE**

**5. TRANSPORTATION REQUESTED BY: AIR \_\_\_\_ GROUND \_\_\_\_**

**6. ADDITIONAL NEEDS** \_\_\_\_\_

**8. LOCATION OF PATIENT** \_\_\_\_\_  
Division, closest DP

POINT OF PICKUP \_\_\_\_\_

LAT \_\_\_\_\_ LONG \_\_\_\_\_

**9. CONTINGENCY** \_\_\_\_\_

# HEALTH AND SAFETY MESSAGE

*SAFETY* starts with *YOU*

We are ALL accountable for SAFE behaviors

INCIDENT: Ramsey Canyon Fire	DATE: 8/26/2018 to 8/27/2018 Oper. Period: Night
------------------------------	--

- Major Hazards and Risks:**
- Steep Terrain and narrow roads
  - Large amount of snags in and around fires
  - Public in the Area of the Fire
  - Powerline through Fire Area
  - Team Transition

Fire Order of the Day #7:  
*Maintain prompt communications with your forces, your supervisor and adjoining forces.*

- Narrative: Rolling Debris Watch Outs!
- Identify snags, hazard trees and unstable rocks (Look up, look down, look around).
  - Secure, eliminate or avoid unstable material on slopes.
  - Remember logs can/do roll, spin, slide & shift.
  - Rocks can/do roll, slide & bounce
  - Remain alert to noise or movement – it could signal immediate danger. Face your danger to decide escape.

**Patient Priority Levels**

**RED / PRIORITY 1:** Life or limb threatening injury or illness. Evacuation need is IMMEDIATE.  
*Ex. Unconscious, difficulty breathing, bleeding severely, heat stroke, disoriented.*

**YELLOW / PRIORITY 2:** Serious Injury or illness. Evacuation may be DELAYED if necessary.  
*Ex: Significant trauma, unable to walk.*

**GREEN / PRIORITY 3:** Minor Injury or illness. Non-Emergency transport.  
*Ex: Sprains, strains, minor heat-related illness.*

- Mitigate or Change Tactics**
- We are into the mop-up and hold phase of this fire – DON'T GET COMPLACENT!!!
  - Everyone is part of the Safety Program. Watch out for each other. If you recognize an unsafe situation, take the initiative to correct it.
  - LCES still applies. Look up, look down, and all around.
  - Watch for snags, falling trees and rolling debris.
  - Avoid working into areas that have not been adequately snagged.
  - Employ the "Buddy System"; don't wander off by yourself after dark without someone knowing your whereabouts; stay in pairs as much as possible.



# Safety Analysis of Tactical Actions (215A)

Incident Name:				Date and Time Prepared:				Operational Period:			
Ramsey Canyon Fire				8/26/18 - 1100				Night 1800 - 0600			
HAZARDS	A	D	H	K	N					LCES MITIGATION	
	Indirect Fireline										
Downhill Fireline										Follow downhill line standards. Bring fire with you. Insure lookout can see entire area. Identify safety zones and escape routes before starting work. Use page 9 of Incident Response Pocket Guide 2018. Establish LCES.	
Underslung Fireline										Cup trench. Post lookout that can see all areas of under slung line. Establish LCES.	
Mid-Slope Fireline										Insure that lookouts can see ALL area of mid slope line as well as areas upslope of mid slope line. Establish Trigger Points and reassess as fire or weather conditions change. Establish LCES.	
Frontal Assault										Identify thresholds for reassessment. Establish LCES.	
No Anchor Points										Find/construct safe, effective anchor before engaging. Establish LCES.	
Extreme Conditions (Spotting, Wind)										High potential given because of low live fuel moisture and high probability of ignition. Anticipate. Identify thresholds for reassessment, monitor weather. Establish LCES.	
Heavy Equipment	X	X			X					Do not work down slope below heavy equipment. Establish communications with operator. Post lookout for rolling debris. Be aware of loose soil and rock. Establish LCES.	
Air Operations Multi Aircraft	X	X	X		X	X				Insure that all personnel are at least 500 feet from bucket or retardant drops. Utilize air attack. Establish LCES.	
Hazard Trees/Snags	X	X	X		X	X				Assess, Identify, Communicate, Isolate, Mitigate. Establish LCES.	
Hazardous Materials	X	X	X							Utilize the Incident Response Pocket Guide. Identify and isolate any suspected hazardous materials. Notify supervisor and warn others in area. Keep your distance. Establish LCES.	
Unburned Area Unknown Fires	X	X	X			X				High potential for re-burn in brush and corners preheated by earlier burn. Blowdown areas keep a close eye on. Post lookouts. Watch for increase in burn activity. Monitor weather for change in RH and or wind conditions. Establish LCES.	
Transportation	X	X	X		X	X				Drive defensively with headlights on, seatbelts fastened. Stay to the right side of the road. Yield to downhill traffic and flaggers. Drive slowly and watch out for the other person. Establish LCES.	
Communication										Establish LCES. Insure that communications between lookouts and line resources are maintained. Escape Routes are identified and reevaluated continuously.	
Steep Terrain Gravity Hazards	X	X				X				Do not work crews above or below each other. Post lookouts for rolling material. Watch footing in loose or wet soil and rock. Do not work below heavy equipment. Establish LCES.	
Environmental Hazards	X	X	X		X	X				Bees, and other animals are in the area. Carry medical kits for those with allergic reactions, do not harass or instigate any confrontations with animals, warn others of presence. Poison Oak - Preventative measures, locate, isolate, mitigate, communicate	
Structures	X	X	X							Follow page(s) 13-16 of Incident Pocket Response Guide 2018. Establish LCES.	
Transfer of Command										Make sure you understand your assignment. Know who your supervisor is and who is working for you. Do not assume. Re-brief all resources.	
Span of Control										Adhere to Span of Control Guidelines-5.1. Ensure Overhead is sufficient for operation and identify chain of command. Ensure everyone receives a briefing. Retain control at all times.	
Falling Operations										Post road guards. Have a falling boss who can be in contact with crews working in the area. Use qualified Fallers.	
Power Lines	X	X	X		X	X				Watch for down power lines and poles. Identify, isolate and report. Notify supervisor and warn others in area. Keep your distance.	
I.A. / Staging	X	X	X		X	X				Follow the 10 and 18, LCES - before engaging, re-evaluate for each new start!	
Public	X	X	X		X	X				Identify, Establish communication with public, Notify Supervisor, Mitigate risk to Public.	
Operations Section Chiefs:				Date / Time:				Safety Officers:			
John Pellissier (ODF) Chris Barney (OSFM)				08/26/18 - 1100				Scott West/Darren Bucich			
								Date / Time:			
								08/26/18 - 1100			



## Incident Management Team: Incident Within An Incident Plan

The primary goal of this Plan is to allow incident personnel the guidelines necessary to *Locate, Triage, Extricate, Treat and Transport* all accident patients in as quick and safe a manner as possible. **The Division/Group Supervisor will initially oversee the emergency and activation of the Plan.** Radio communication will be on the **"Command Frequency"** and will take priority over all other radio traffic. **All Command and General Staff will be notified by the Safety Officer of what level (Green, Yellow or Red) the Incident is.**

G	Y	R	INCIDENT COMMANDER
			Ensures the Incident Within an Incident Plan is implemented
			Notifies Agency Administrator(s), Geographic Coordination Center, Salem Coordination Center, Salem Safety.
			Orders Investigator or Investigation Team
G	Y	R	OPERATIONS SECTION CHIEF
			Coordinate and support the Safety Officer's investigation and involved Law Enforcement agencies.
			Coordinate with Safety for ground ambulance transport, medical supplies and other medical needs.
G	Y	R	AVIATION EMERGENCIES:
			Air Attack, Air Operations Branch Director coordinate, as appropriate. OSC and IMT provide Support.
			Implement ODF Aviation Mishap Response Guide and Checklist & Heli-Base Emergency Plan, as appropriate.
			Coordinate with Air Operations Branch Director for notification to appropriate agencies.
G	Y	R	DIVISION/GROUP SUPERVISOR
			Will respond directly to the accident/incident scene and assume command until relieved, or clearly designate another capable person to be responsible, on your behalf.
			Remain aware of surroundings. Delegate Division/Group oversight to other qualified personnel, as needed.
			Size-up the Incident (Nature of Accident, Number/Type of Resources, Location, Safety for Incoming Personnel)
			Coordinate "Line EMT" response to the accident (Utilize Closest EMT's).
			Identify Location and Lat/Long coordinates of site.
			Identify Medical treatment and transportation needs.
			Begin "TRIAGE" (PINK pages of the Incident Response Pocket Guide – IRPG)
			Determine and initiate treatment and transportation needs.
			Evaluate special needs (Law Enforcement, Heavy Rescue, Haz Mat, fire protection or suppression)
			Coordinate with Air Attack for Air-Medical transportation needs
			Notify OSC and SOF of all accidents/incidents.
			Preserve the scene for accident investigation and begin documentation.
G	Y	R	SAFETY OFFICER
			Maintain Overall Incident Safety. Provide coordination between the incident and other IMT sections and units.
			Implement the Incident Within an Incident Plan for all incidents, providing coordination between the on- scene Division/Group and other IMT sections and units.
			Ensure appropriate incident organization.
			Coordinate and oversees line EMT& Paramedic response to the accident site.
			Provide for immediate extrication and medical triage, treatment and transportation.
			Request a Size-up of the situation. Number of people involved and their medical condition (Triage). Nature of the incident (auto/aircraft accident, burn over, etc.) and number of crews, vehicles or aircraft involved.
			Coordinate with Air Operations Branch Director for Air-Medical transportation needs.
			Ensure air/ground ambulances coordinate patient transportation locations with the Medical Unit Leader
			Identify special needs, i.e. Law Enforcement, Heavy Rescue, and Haz Mat response.
			Evaluate safety issues at all accident/incident sites and work with Division/Group Supervisor in charge to mitigate them.
			Initiate the investigation of the emergency and coordinate with the IC to request the appropriate investigation resources/teams.
			Secure witness names, initial statements and all evidence relating to the accident.
			Coordinate with the Logistics Section for on scene support and location of receiving hospitals for patients.
			Coordinate investigation with comps/claims unit.
			Obtain sketches and photos of emergency scene.
			Assist Medical Unit Leader with communications with the hospital and ambulance service.

<b>G</b>	<b>Y</b>	<b>R</b>	<b>LIAISON</b>
			Assist the Medical Unit Leader as needed
			Insure coordination with investigating entities
			Assist other positions as needed
			Coordinate with cooperators and key stakeholders
<b>G</b>	<b>Y</b>	<b>R</b>	<b>INFORMATION OFFICER</b>
			Collect pertinent emergency information.
			Coordinate information release with Incident Commander and Agency Public Affairs Officer.
			Assign Information Officer(s) to field media inquiries at accident scene, med-evac area and hospital.
			Coordinate with Liaison and Safety Officer regarding roadblocks, evacuations and emergency medical information needs.
			No personal information shall be released until approved by Incident Commander. Coordinate with local Agency.
			Coordinate with employee's home unit.
<b>G</b>	<b>Y</b>	<b>R</b>	<b>PLANNING SECTION CHIEF</b>
			Complete the 209 and coordinate with IIO to include accident information and status in the daily morning fire update report sent to Salem Coordination Center.
			Coordinate Critical Incident Stress Debriefing for effected personnel.
			Provide and coordinate a Family Liaison with supporting agencies, (Home Unit, Red Cross, 100 Club, Chaplin)
			Provide Briefing at ICP for Incident Personnel
			Ensure all communications regarding the accident and actions are well-documented.
<b>G</b>	<b>Y</b>	<b>R</b>	<b>LOGISTICS SECTION CHIEF</b>
			Assume command and implement Incident Within Incident Plan for incidents within the ICP or Camp in absence of SOF
			Ensure maintenance of accurate radio logs, use the Injury Communications Protocol Form (Logistics Manual Appendix I – 10) until the emergency has terminated. Ensure Safety Officer receives copies in a timely manner.
			Establish emergency radio communications, on a different frequency, if requested by scene IC.
			Provide ground or air transportation, depending upon need. Coordinate with Air Operations Branch Director.
			Order needed resources for the emergency
			Monitor support functions and assess additional needs.
			Coordinate removal of damaged vehicles.
			Coordinate Security with Team Liaison and Operations Section Chief as necessary.
			Locate and secure personal effects of injured personnel.
<b>G</b>	<b>Y</b>	<b>R</b>	<b>FINANCE SECTION CHIEF</b>
			Coordinate with Agency Administrative Officer(s) and Agency Risk Manager.
			Coordinate Compensation/Claims Unit response (Risk Management Forms).
			Notify Home Unit or Office of injured person(s). (Agency or Contractor)





# **BURN INJURY PLAN**

**Oregon Department of Forestry employees deserve the highest standard of burn care management when injured in the performance of their duties.**

Burns will be classified as either Minor or Serious. Treatment, transportation, and follow-up specialty care will be based upon the severity of the burn classification. Burns will be classified by the established Medical Unit on project fires. Unit Supervisors will classify burns received in any other situation. Do not delay medical treatment for Medical Unit or Unit Supervisor classification in emergency situations.

## **Minor Burns**

Superficial (first degree) burns involving less than 10% of body surface area that **does not** involve face, hands, feet, genitalia, joint areas, chemical burns, or burns with potential of respiratory complication.

The injured person in conjunction with the Medical Unit or Unit Supervisor will make treatment and transportation decisions for Minor Burns. Minor Burns requiring medical attention will be evaluated at a qualified hospital offering full service emergency care. Urgent care facilities and clinics are not an acceptable source for evaluation and treatment of burn injuries.

**NOTE:** All burns resulting from fire entrapments, direct flame contact, or superheated gases will be treated as a Serious Burn.

## **Serious Burns**

Burns involving more than 10% of body surface area or burns of the face, hands, feet, genitalia, joint areas, chemical burns, or burns with potential of respiratory complication.

All serious burns will be transported to the closest appropriate medical facility for initial evaluation and stabilization. After stabilization, patients with serious burns will be transported to a qualified regional burn center as soon as possible for evaluation, treatment, and follow-up.

The Incident Commander, Unit Supervisor or designee has the discretion to request that burn injuries, regardless of their apparent severity, be evaluated at a qualified regional burn center. The Incident Commander, Unit Supervisor or designee will assign a representative to maintain contact with the injured employee throughout their care.

## **REGIONAL BURN CENTERS**

**OREGON, Portland**  
Oregon Burn Center  
Legacy Emanuel Hospital  
2801 N. Gantenbein Ave  
Portland, OR 97227  
(503) 413-4232

**WASHINGTON, Seattle**  
University of Washington Burn Center  
Harborview Medical Center  
325 Ninth Avenue  
Seattle, WA 98104  
(206) 744-3000

**CALIFORNIA, Sacramento**  
Davis Regional Burn Center  
University of California  
2315 Stockton Boulevard  
Sacramento, CA 95817  
(916) 734-3636

# **ODF Ramsey Canyon Fire**

## **MOP UP STANDARDS**

August 24<sup>th</sup>, 2018

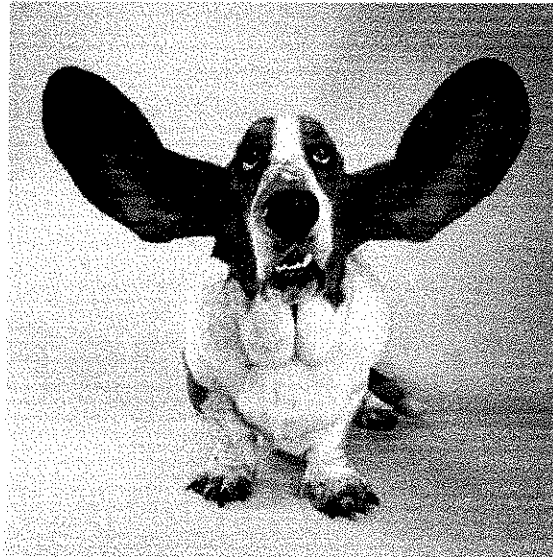
Objective: The Ramsey Canyon Fire shall be mopped-up to a standard which the likelihood of the fire escaping the containment lines unlikely. The standards below can be flexible and should be applied based on physical conditions present, considerations for firefighter safety, and the expertise of the Incident Management Team (IMT) as long as the objective is achieved. These standards apply to all lands within the fire perimeter.

- Grid the green out to 300 feet from the fire perimeter for two burning periods
- Mop up 100% into hard black a minimum of 300 feet
- Mop up 100% all spot fires, in addition, a route to them will be flagged and the perimeter mapped in GIS
- Line unburned islands and drainages within 300 feet of the perimeter if they are not within the designated mop up area
- Mop up to 300 feet into hard black any dirty burn areas and areas of higher fuel concentrations. The decision to mop up this far into the fire will be based on the expertise of the IMT which is to consider fuels, aspect, wind exposure and firefighter safety
- Heat detecting equipment will be used to detect for hot spots within 300 feet of the perimeter including spot fires
- Complete felling of all snags and fire damaged trees that have been identified as a safety concern, have the potential to cause spotting outside control lines or is within 300 feet of major travel corridors and structures.



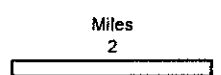
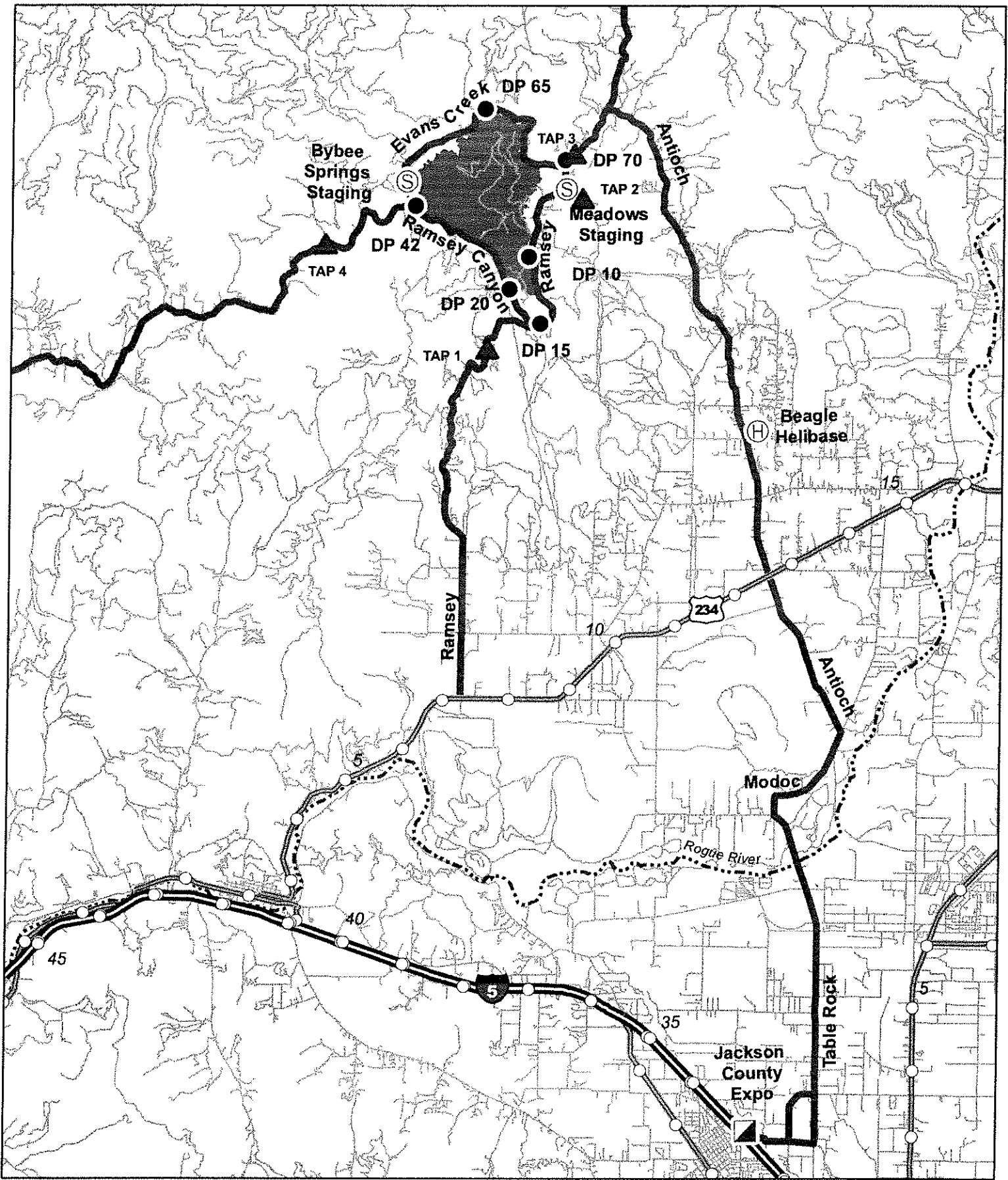


**I Take Responsibility To:**  
Listen carefully and with an  
open mind.



*The biggest communication  
problem is we do not listen to  
understand, we listen to  
reply.*





- Drop Point
- ◻ Incident Command Post
- ▬ I 5
- ⊙ Helibase
- ⊙ Staging Area
- ▬ Incident Access Route
- ▬ Rogue River
- ▲ Traffic Assistance Points

**TRANSPORTATION**  
**Ramsey Canyon**  
 OR 711S-032519  
 August 25, 2018  
 NAD 83

# Ramsey Canyon Camp Map

Ramsey Canyon  
11 Peninger Rd  
Central Point, OR 97502

Parking

ICP

Gate 2

Exit  
Gate 1 1/2

Parking

OSFM  
Overhead

Engines

Parking

Crew Camping

Parking

Crew  
Camping

Parking

Briefing

Ground  
Support

Cache

Peninger Rd.

Exit

Shower

Kitchen

Entrance  
Gate 1



08/25/2018







## MEDICAL EMERGENCY PROCEDURES

**1. LINE EMERGENCY:** Crew Supervisor to contact Division Supervisor with patient complaint/condition and location.

- Division Supervisor contacts:
  - Line EMT / PM
  - Communications Unit
- Communication Unit will clear command channel for emergency traffic
- Communications Unit contacts:
  - Medical Unit
  - Safety
  - Operations
- Division Supervisor will run medical emergency on command channel
- Medical Unit will:
  1. Dispatch ground ambulance to nearest drop-point for ground transport only.
  2. Or after patient pickup, dispatch ambulance to Heli-base for Medical AIR EVAC Flight if needed
  3. Notify receiving hospital of injury status.

## INJURY REPORTING PROCEDURES

**2. EMERGENCY IC** \_\_\_\_\_

IS AN EMT WITH PATIENT: YES \_\_\_\_\_ NO \_\_\_\_\_

IS A PARAMEDIC WITH PATIENT: YES \_\_\_\_\_ NO \_\_\_\_\_

**3. NATURE OF INJURY** \_\_\_\_\_

AGE \_\_\_\_\_ WEIGHT \_\_\_\_\_ SEX: MALE \_\_\_\_\_ FEMALE \_\_\_\_\_

CONSCIOUS? YES \_\_\_\_\_ NO \_\_\_\_\_ BREATHING? YES \_\_\_\_\_ NO \_\_\_\_\_

PATIENT UNIT ID \_\_\_\_\_

REMINDER: DO NOT GIVE PT NAME OVER RADIO

**4.**

**RED / PRIORITY 1** Life or limb threatening injury or illness. Evacuation need is **IMMEDIATE**

*Ex: Unconscious, difficulty breathing, bleeding severely, 2o – 3o burns more than 4 palm sizes, heat stroke, disoriented.*

**YELLOW / PRIORITY 2** Serious Injury or illness. Evacuation may be **DELAYED** if necessary.

*Ex: Significant trauma, unable to walk, 2o – 3o burns not more than 1-3 palm sizes.*

**GREEN / PRIORITY 3** Minor Injury or illness. Non-Emergency transport

*Ex: Sprains, strains, minor heat-related illness.*

**5. TRANSPORTATION REQUESTED BY:** AIR \_\_\_\_\_ GROUND \_\_\_\_\_

**6. ADDITIONAL NEEDS** \_\_\_\_\_

**7. INCIDENT COMMUNICATIONS:**

- Command: Channel 9 & 10
- Air to Ground: Channel 7

**8. LOCATION OF PATIENT** \_\_\_\_\_

Division, closest DP

POINT OF PICKUP \_\_\_\_\_

LAT \_\_\_\_\_ LONG \_\_\_\_\_

**9. CONTINGENCY** \_\_\_\_\_