

## INFRARED INTERPRETER'S DAILY LOG

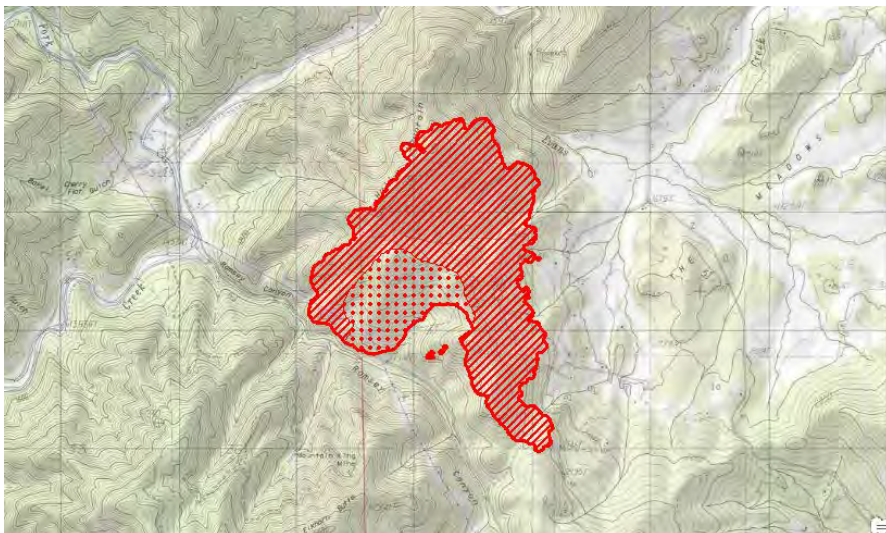
<b>Incident Name:</b> Miles OR-UPF-000264	<b>IR Interpreter(s):</b> Tammy Hocut thocut@fs.fed.us	<b>Local Dispatch Phone:</b> Rogue Valley CC 541-618-2510	<b>Interpreted Size (acres):</b> Columbus: 10,140 Miles: 35,367 <b>Growth last period (acres):</b> Columbus: 166 Miles: 1,444
<b>Flight Time:</b> 0230 (MDT) <b>Flight Date:</b> 08/23/2018	<b>Interpreter(s) location:</b> Jasper, AR <b>Interpreter(s) Phone:</b> 870-446-5878 (landline) 870-365-2810 (cell)	<b>GACC IR Liaison:</b> Jim Grace <b>GACC IR Liaison Phone:</b> 541-416-6593	<b>National Coordinator:</b> Jan Johnson <b>National Coord. Phone:</b> 208-387-5900
<b>Ordered By:</b> Stacy Ainslie - SITL 509-680-0111 pnw2sit@gmail.com	<b>A Number:</b> A-28	<b>Aircraft/Scanner System:</b> N149Z / Phoenix	<b>Pilots/Techs:</b> Netcher/Nelson/Brantlinger
<b>IRIN Comments on imagery:</b> 4 imagery strips in north to south runs.		<b>Weather at time of flight:</b> Clear	<b>Flight Objective:</b> Identify and map Heat perimeter, Scattered Heat and Isolated Heat Sources.
<b>Date and Time Imagery Received by Interpreter:</b> 08/23/2018 – 0305 (MDT)		<b>Type of media for final product:</b> Shape files, KMZ, PDF, and IRIN Log	
<b>Date and Time Products Delivered to Incident:</b> 08/23/2018 – 0550 (MDT)		<b>Digital files sent to: NIFC FTP @</b> <a href="https://ftp.nifc.gov/public/incident_specific_data/pacific_nw/2018/Incidents/Oregon/2018_SouthUmpquaComplex_OR_UPF_000264/IR/20180823/">https://ftp.nifc.gov/public/incident_specific_data/pacific_nw/2018/Incidents/Oregon/2018_SouthUmpquaComplex_OR_UPF_000264/IR/20180823/</a> Email: pnw2sit@gmail.com	

**Comments /notes on tonight's mission and this interpretation:**

I started incident fire perimeter dated 08/22/2018 - . New growth for Columbus and Miles fires – 1,610 acres.

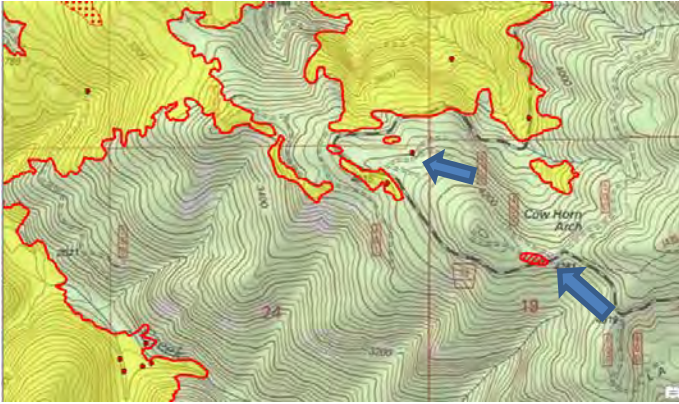
Yellow is 8/20/2018's incident perimeter. Red line is current IR heat perimeter.

A new fire to the southwest of Miles was seen by plane and scanned as they went to the Miles fires. I mapped it and included it with the Miles data – 722 acres.

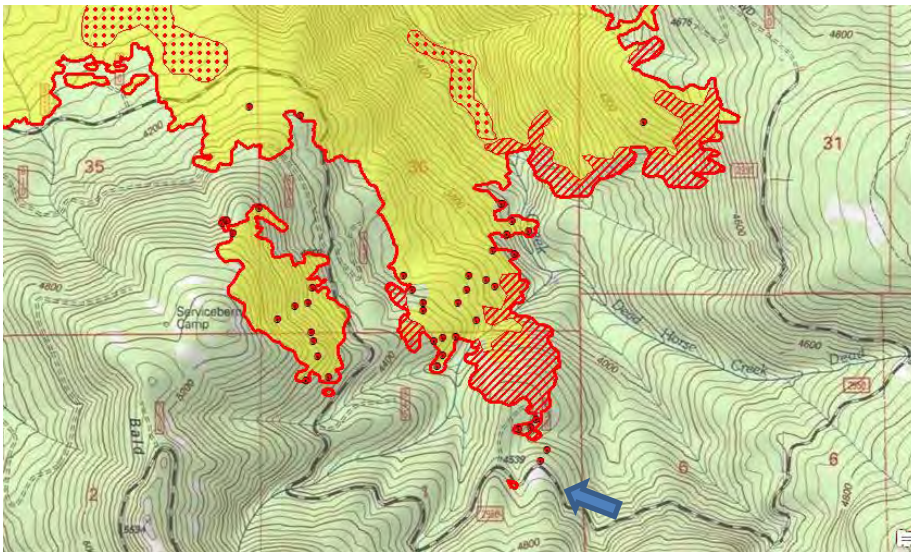


## INFRARED INTERPRETER'S DAILY LOG

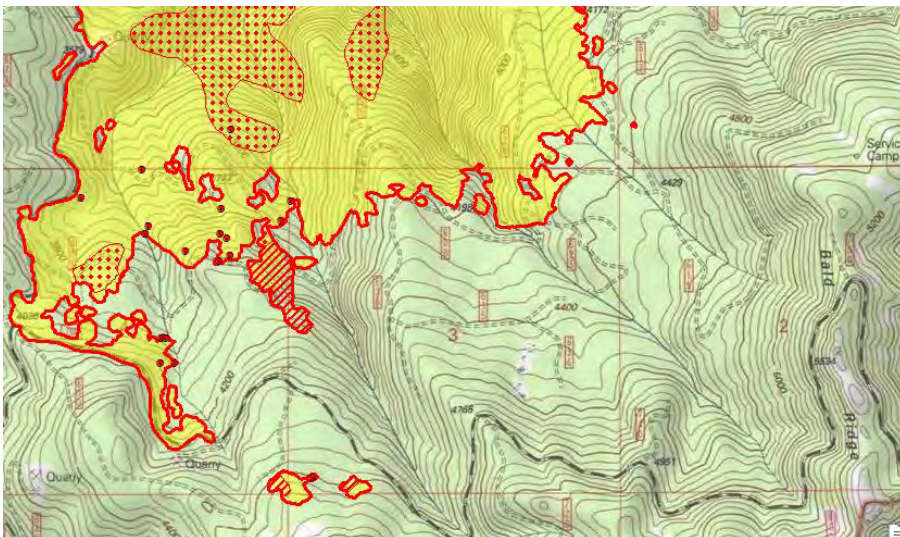
The growth again was on the north half of the Miles fire and the south end of the Columbus fire. There was a new heat polygon on the east side of the Columbus fire just south of Cow Horn Arch and an isolated heat source to the northwest of Cow Horn Arch on highway 88 in section 19.



There was growth on the southeast part of the Columbus fire to the north and south of Dead Horse Creek with a new fire polygon and isolated heat sources in Section 1 along highway 2950.

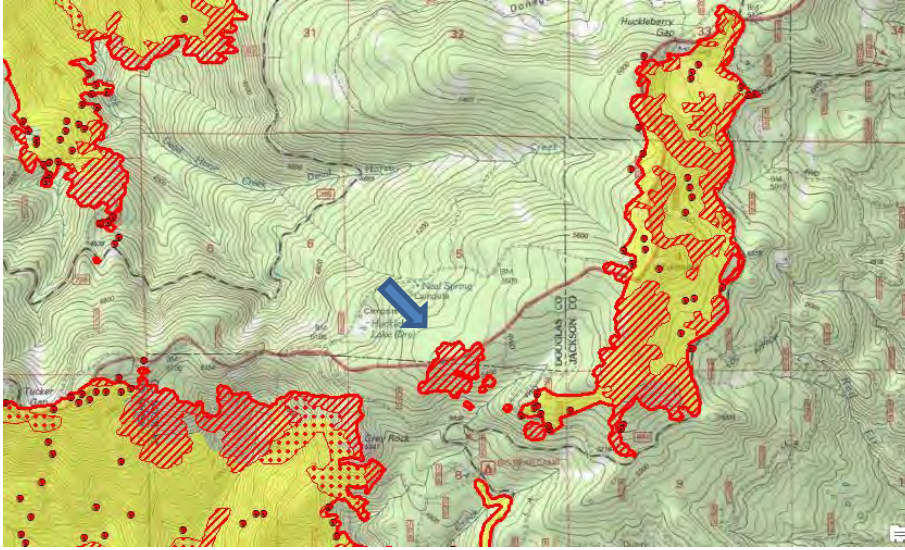


There was also some growth in sections 3 and 4 north of highway 701.

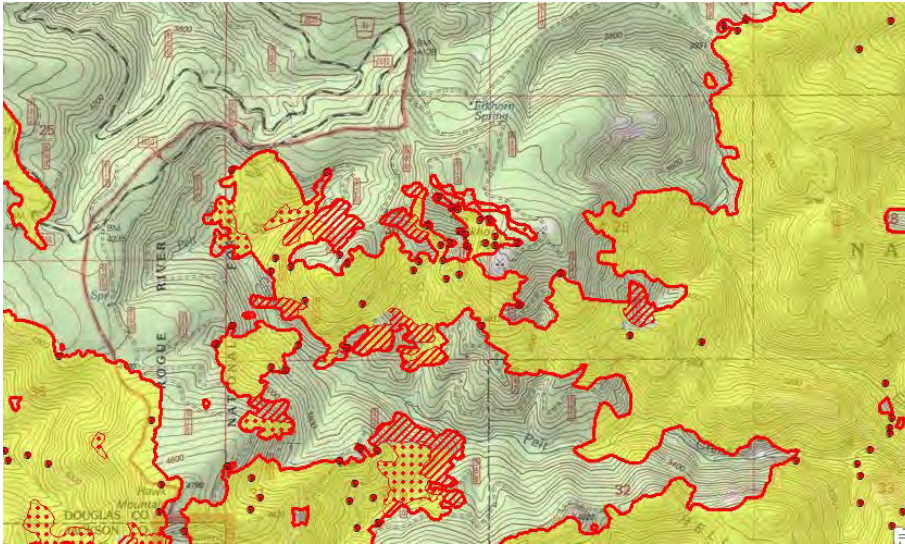


## INFRARED INTERPRETER'S DAILY LOG

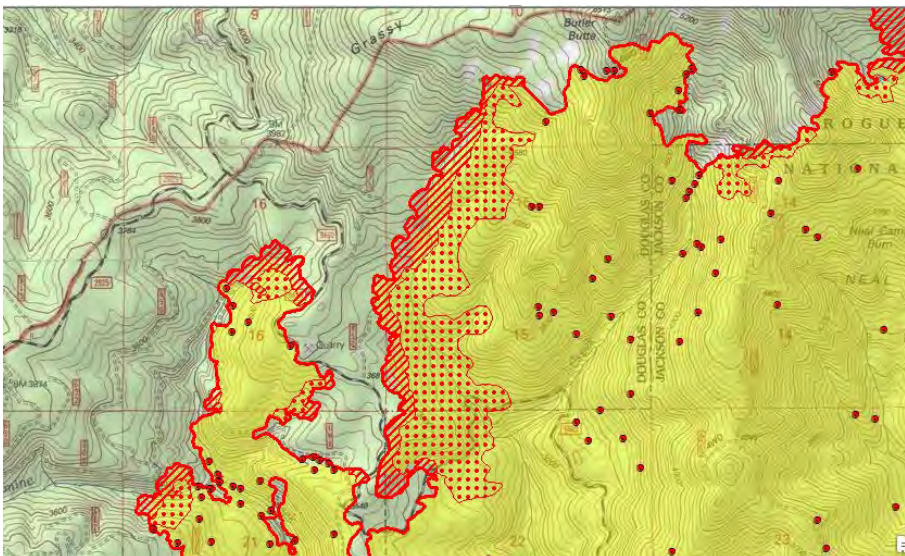
The miles fire had growth on the northeast part around the Huckleberry Gap area and south to Grey Rock. There was several new heat polygons and isolated heat sources in this area.



On the northwest side of Miles south of the Elkhorn Spring area there was growth with some intense heat.

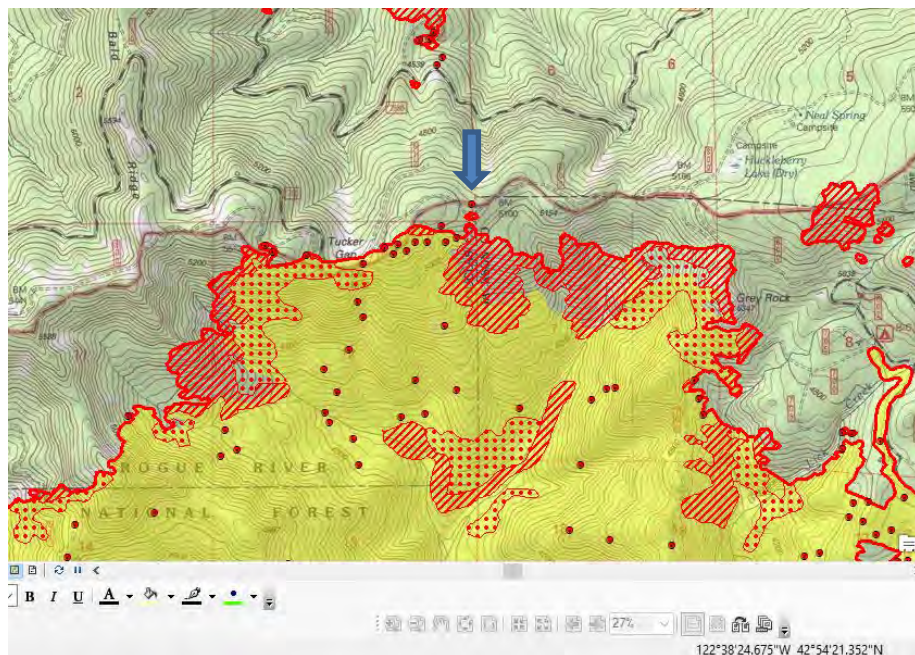


In the northwest part of Miles south of Butler Butte there was some growth with intense heat.

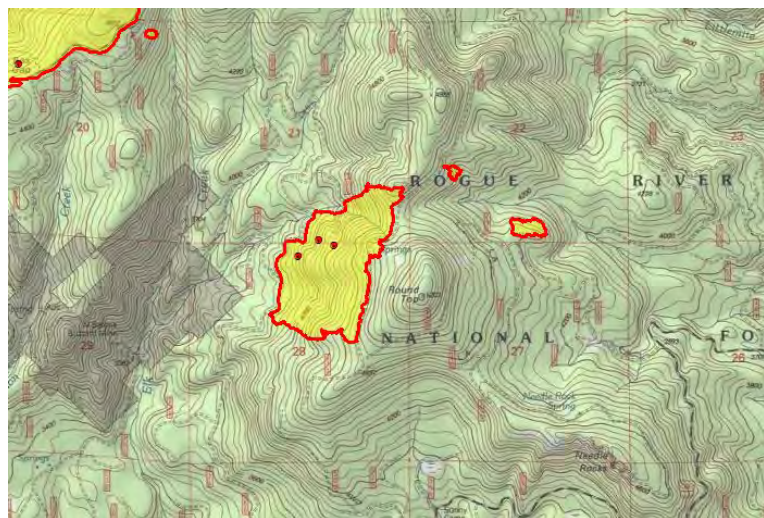


## INFRARED INTERPRETER'S DAILY LOG

Growth on north part of Miles from just west of Tucker Gap east to Grey Rock with Intense heat and a new heat polygon and isolated heat source north of the fire just east of Tucker Gap.



Round Top only had 3 isolated heat sources within its heat perimeter.



Scattered and isolated heat throughout interior of fires.