

## INFRARED INTERPRETER'S DAILY LOG

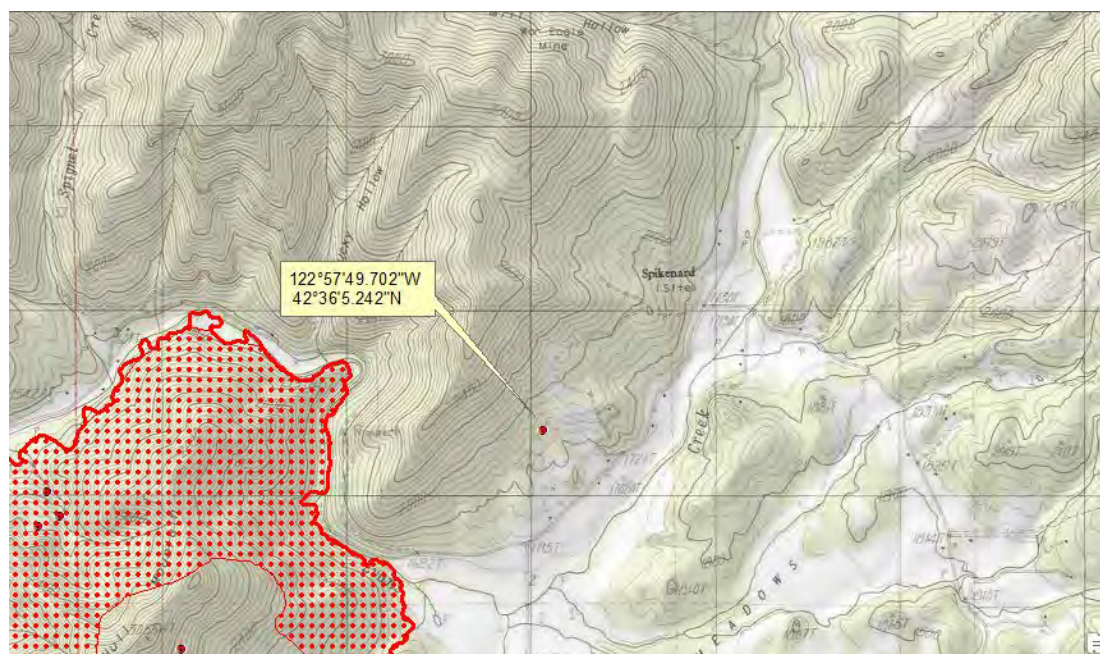
<b>Incident Name:</b> Ramsey Canyon OR-711S-032519	<b>IR Interpreter(s):</b> Tammy Hocut thocut@fs.fed.us	<b>Local Dispatch Phone:</b> Medford ODF 541-644-3328	<b>Interpreted Size (acres):</b> 1,888 acres <b>Growth last period (acres):</b> 17 acres
<b>Flight Time:</b> 0154 (MDT) <b>Flight Date:</b> 08/25/2018	<b>Interpreter(s) location:</b> Jasper, AR <b>Interpreter(s) Phone:</b> 870-446-5878 (landline) 870-365-2810 (cell)	<b>GACC IR Liaison:</b> Jim Grace <b>GACC IR Liaison Phone:</b> 541-416-6593	<b>National Coordinator:</b> Tom Mellin <b>National Coord. Phone:</b> 208-387-5900
<b>Ordered By:</b> Barb Moore 541-207-7092 barbara.e.moore@oregon.gov	<b>A Number:</b> A-53	<b>Aircraft/Scanner System:</b> N149Z / Phoenix	<b>Pilots/Techs:</b> Nelson/DeHaas/Navarro
<b>IRIN Comments on imagery:</b> Good clear imagery – one imagery file		<b>Weather at time of flight:</b> Clear	<b>Flight Objective:</b> Identify and map Heat perimeter, Scattered Heat and Isolated Heat Sources.
<b>Date and Time Imagery Received by Interpreter:</b> 08/25/2018 – 2207 (MDT)		<b>Type of media for final product:</b> Shape files, KMZ, PDF, and IRIN Log	
<b>Date and Time Products Delivered to Incident:</b> 08/25/2018 – 2230 (MDT)		<b>Digital files sent to: NIFC FTP @</b> <a href="https://ftp.nifc.gov/public/incident_specific_data/pacific_nw/2018/Incidents/Oregon/2018_RamseyCanyon_OR711S_1871132519/IR/20180826/">https://ftp.nifc.gov/public/incident_specific_data/pacific_nw/2018/Incidents/Oregon/2018_RamseyCanyon_OR711S_1871132519/IR/20180826/</a> Email: barbara.e.moore@oregon.gov	

**Comments /notes on tonight's mission and this interpretation:**

I started from infra-red heat perimeter dated 08/25/2018. New growth for the Ramsey Canyon fire is 17 acres.

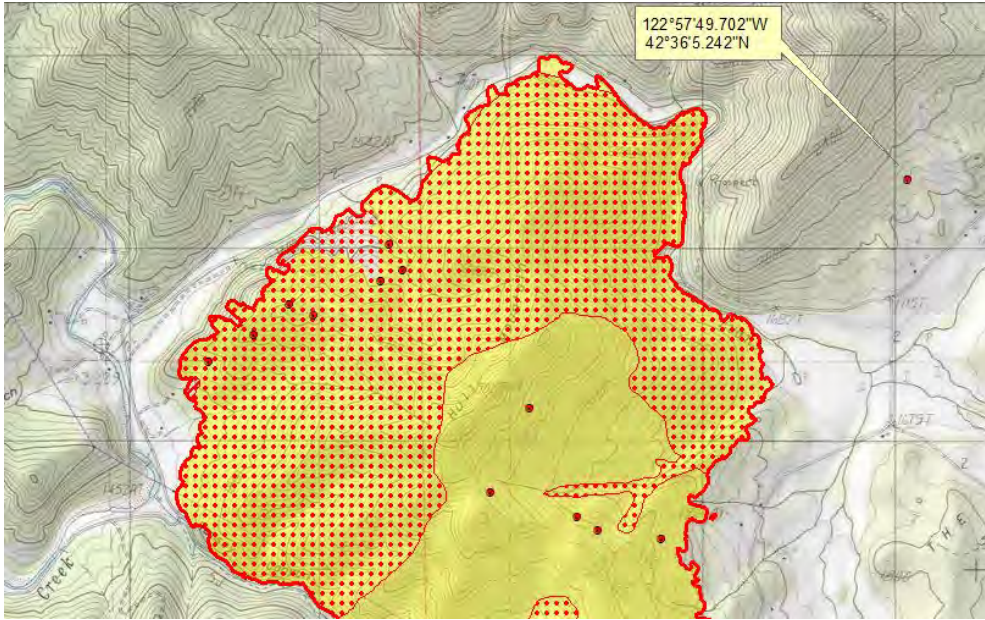
On the following maps yellow is 8/25/2018's IR heat perimeter. Red line is current IR heat perimeter.

There was one isolated heat source outside the main fire perimeter to the east about 0.7 miles just southwest of Spikenard.



# INFRARED INTERPRETER'S DAILY LOG

Some growth on the north side of fire with scattered heat and a few isolated heat sources within the heat perimeter.



Some growth in the center area of the fire and down on the southern tip of the fire.

