

Silver Creek Fire

PJT58200819

Incident Action Plan



Sunday

07/15/2018

Day Shift

0600 - 1800

Incident Objectives	1. Incident Name <i>Silver Creek Fire</i>	2. Date Prepared <i>07/14/2018</i>	3. Time Prepared <i>1100</i>
4. Operational Period (Date and Time) <i>07/15/2018 0600 - 1800</i>			
5. General Control Objectives for the Incident (include Alternatives)			
- Fight fire aggressively and safely; maintain LCES at all times.			
- Minimize fire size perimeter through the use of direct tactics and a staffed night shift where possible.			
- Maintain and build positive relationship with landowners, general public, and Silver Falls State Park Staff			
See attached weather forecast			
7. General Safety Message			
- High public use area, stay hydrated, and always maintain situational awareness			
ICS-202	9. Prepared by (PSC) Kyle Kaupp	10. Approved by (IC) Brent O'Nion	

ORGANIZATION ASSIGNMENT LIST			9. Operations Section	
1. Incident Name	Silver Creek Fire		Chief	Eric Perkins
2. Date	07/14/2018	3. Time	2330	Deputy
4. Operational Period	07/15/2018	0600 - 1800		a. Branch I - Division/Groups
5. Incident Commander and Staff			Division A	Marc Desjardin
Incident Commander	Brent O'Nion		Division B	Mike Haasken
Deputy				
Safety Officer	Scott West			
Information Officer	Bobbi Doan			
Agency Admin				
MCFR			b. Branch II - Division/Groups	
ODF	Steve Wilson			
Deputy ODF	Levi Hopkins			
Silver Falls	Craig Leach			
Drakes Crossing	Fred Patterson			
USFS				
OSFM				
USFS Res. Advisor				
LOFR - Hood River			c. Group	
7. Planning Section				
Chief	Kyle Kaupp			
Deputy				
Resource Unit	Dawn Sleight			
Situation Unit				
Demobilization Unit				
IMET			d. Air Operations Branch	
FBAN			Air Ops Branch Director	
Technical Specialists			Air Support Supervisor	
Investigation - ODF			Air Attack Supervisor	Neal Laugle
Radio Operator	Renee Shippey		Helibase Manager	Mark Reed
Training Specialist			Air Tanker Coordinator	
FOBS			10. Finance Section	
			Chief	Chad Montoya
8. Logistics Section			Deputy	
Chief			Time Unit	Pat Swehosky
Deputy			Procurement Unit	
Service Branch Dir.			Comp/Claims Unit	
Support Branch Dir.			Cost Unit	
Supply Unit			CRNW	
Ground Support Unit	Mike Thompson			
Communications Unit	Leroy Dwire			
Medical Unit			Prepared by (Planning Section Chief)	
Ordering Unit	Shannon Loffelmacher		Kyle Kaupp	
Food Unit				
Base Camp Manager	Macy Yates			

DIVISION ASSIGNMENT LIST		1. Branch		2. Division A			
3. Incident Name Silver Creek Fire		4. Operational Period Date: 07/15/2018 Time: 0600 - 1800					
5. Operations Personnel							
Operations Chief	Eric Perkins	Division/Group Supervisor			Marc Desjardin		
Branch Director		Safety Officer			Scott West		
6. Resources Assigned this Period							
Resource	Name	Personnel	Company	Notes		Resource #	
Crew	South Fork	11	ODF	CRWB: Jones		C-10	
Crew	South Fork	11	ODF	CRWB: Thomas		C-11	
Crew	South Fork	11	ODF	CRWB: Kaiser		C-12	
Crew	South Fork	11	ODF	CRWB: Huserik		C-13	
TFLD	Spencer Mitchell	1	ODF			O-9	
FALM	Gabe Silbernagel	2					
7. Control Operations Initial attack fire, build control lines, and mitigate overhead hazards							
8. Special Instructions							
9. Division/Group Communication Summary							
Function	Branch	Frequency Rx	Tone	Frequency Tx	Tone	Channel	Remarks
Command		151.28000	162.2	159.27000	162.2	6	FC Relay
Tactical		151.34000	156.7	151.34000	156.7	3	Red Net
A/G		151.31000	156.7	151.31000	156.7	4	White Net
Prepared by (RESL)		Approved by (PSC)			Date		Time
Kyle Kaupp		Kyle Kaupp			07/14/2018		2330

DIVISION ASSIGNMENT LIST		1. Branch		2. Division B			
3. Incident Name Silver Creek Fire		4. Operational Period Date: 07/15/2018 Time: 0600 - 1800					
5. Operations Personnel							
Operations Chief		Eric Perkins		Division/Group Supervisor		Mike Haasken	
Branch Director				Safety Officer		Scott West	
6. Resources Assigned this Period							
Resource	Name	Personnel	Company	Notes		Resource #	
Type 2 Crew	Tom Fery Farm	20	Tom Fery Farm			C-7	
Type 2 Crew	J Franco	20	J Franco			C-8	
Type 2 IA Crew	Mt. Hood	20	USFS	Devils Ridge Crew		C-9	
TFLD	David Helmricks	1	ODF			O-14	
FALM	Aaron Silbernagel	2					
DOZER	Matt Chavarria	1	Jan Hupp				
Tender 448		1	Drakes Crossing				
Tender 449		1	Drakes Crossing				
Tender 418		1	Silverton Fire				
7. Control Operations Initial attack fire, build control lines, and mitigate overhead hazards							
8. Special Instructions							
9. Division/Group Communication Summary							
Function	Branch	Frequency Rx	Tone	Frequency Tx	Tone	Channel	Remarks
Command		151.28000	162.2	159.27000	162.2	6	FC Relay
Tactical		159.26250	156.7	159.26250	156.7	5	Blue Net
A/G		151.31000	156.7	151.31000	156.7	4	White Net
Prepared by (RESL)		Approved by (PSC)			Date		Time
Kyle Kaupp		Kyle Kaupp			07/14/2018		2330

DIVISION ASSIGNMENT LIST		1. Branch		2. Division Unassigned Resources			
3. Incident Name Silver Creek Fire		4. Operational Period Date: 07/15/2018 Time: 0600 - 1800					
5. Operations Personnel							
Operations Chief	Eric Perkins	Division/Group Supervisor			Marc Desjardin, Mike Haasken		
Branch Director		Safety Officer			Scott West		
6. Resources Assigned this Period							
Resource	Name	Personnel	Company	Notes	Resource #		
FELB	Andrew Arvin	1	ODF		O-17		
FELB	Steven Cooke	1	BLM		O-18		
FELB	UTF	1		Available Monday	O-19		
Type 6 Engine	Lambert	2	ODF	West Oregon	E-2		
Type 6 Engine	Morton	2	ODF	Forest Grove	E-3		
FALM	Zyglinski	2					
FALM	VanHoose	2					
7. Control Operations Initial attack fire, build control lines, and mitigate overhead hazards							
8. Special Instructions							
9. Division/Group Communication Summary							
Function	Branch	Frequency Rx	Tone	Frequency Tx	Tone	Channel	Remarks
Command		151.28000	162.2	159.27000	162.2	6	FC Relay
Tactical		151.34000	156.7	151.34000	156.7	3	Red Net
Tactical		159.26250	156.7	159.26250	156.7	5	Blue Net
A/G		151.31000	156.7	151.31000	156.7	4	White Net
Prepared by (RESL) Kyle Kaupp		Approved by (PSC) Kyle Kaupp			Date 07/14/2018		Time 2330

INCIDENT RADIO COMMUNICATIONS PLAN		Incident Name			Date/Time Prepared			Operational Period Date/Time			
		Silver Creek Fire			07/14/2018 @ 2300			07/15/2018 0600 - 1800			
Ch #	Function	Channel Name/Ttalked Radio System Talkgroup	Assignment	RX Freq	N or W	RX Tone/NAC	TX Freq	N or W	Tx Tone/NAC	Mode A, D or M	Remarks
1		Horeb		151.20500		179.9	159.43500		151.4		
2	District IA	High Heaven		151.20500		179.9	159.43500		179.9		Command Secondary/Helibase
3	Tactical	Red Net		151.34000		156.7	151.34000		156.7		Tactical Primary
4	Air/Ground	White Net		151.31000		156.7	151.31000		156.7		Air to Ground
5	Tactical	Blue Net		159.26250		156.7	159.26250		156.7		Tactical Secondary
6	Command	FC Relay		151.28000		162.2	159.27000		162.2		Command Primary
7		South 2		154.01000		123.0	154.01000		123.0		
8		South 3		154.25000		123.0	154.25000		123.0		
9		South 4		154.29500		123.0	154.29500		123.0		
10		Linn Co 1		154.31000		167.9	154.31000		167.9		
11		Linn Co 2		154.13000		167.9	154.13000		167.9		
12		Linn Co 3		153.99500		167.9	153.99500		167.9		
13		Linn Co 4		155.56500		167.9	155.56500		167.9		
14		North 1		154.16000		123.0	154.16000		123.0		
15		North 7		154.21250		D516N	158.96250		D516N		
16		Repeater		170.42500			170.42500		156.7		
Prepared By (Communications Unit)											
Kyle Kaupp/Leroy Dwire											

The convention calls for frequency lists to show four digits after the decimal place, followed by either an "N" or a "W", depending on whether the frequency is narrow or wide band. Mode refers to either "A" or "D" indicating analog or digital (e.g. Project 25) or "M" indicating mixed mode. All channels are shown as if programmed in a control station, mobile or portable radio. Repeater and base stations must be programmed with the Rx and Tx reversed.

MEDICAL PLAN	1. INCIDENT NAME	2. DATE PREPARED	3. TIME PREPARED	4. OPERATIONAL PERIOD
	Silver Creek Fire	07/14/18	2300	07/15/18

5. INCIDENT MEDICAL AID STATIONS

MEDICAL AID STATIONS	LOCATION	PARAMEDICS	
		YES	NO
Drakes Crossing Fire Department	19364 Powers Creek Loop Rd NE, Silverton, OR 97381	X	

6. TRANSPORTATION

A. Air Ambulances				
NAME	ADDRESS	PHONE	PARAMEDICS	
			YES	NO
Life Flight	Portland	1-800-452-7434	X	
Air Life	La Grande/Bend	1-800-621-5433	X	
B. Ground Ambulances				
Santiam Ambulances Service	1401 N. 10 th , Stayton, OR	911/503-769-2175	X	

7. HOSPITALS

NAME	ADDRESS	TRAVEL TIME		PHONE	HELIPAD		BURN CENTER	
		AIR	GRND		YES	NO	YES	NO
Santiam Memorial Hospital	1401 N. 10 th , Stayton, OR	10min	20min	503-769-2175	X			X
Providence Portland	3181 Sam Jackson Park Rd. Portland OR	30min	90min	509-525-3320	X			X
Legacy Emmanuel	2801 N. Gantenbein Ave, Portland, OR	30min	90min	503-413-2200	X		X	

8. MEDICAL EMERGENCY PROCEDURES

<p>1. LINE EMERGENCY: Crew Supervisor to contact Division Supervisor with patient complaint/condition and location.</p> <ul style="list-style-type: none"> Division Supervisor contacts: <ul style="list-style-type: none"> Line EMT / PM Communications Unit Communication Unit will clear command channel for emergency traffic Communications Unit contacts: <ul style="list-style-type: none"> Medical Unit Safety Operations Division Supervisor will run medical emergency on command channel Medical Unit will: <ol style="list-style-type: none"> Dispatch ground ambulance to nearest drop-point for ground transport only. Or after patient pickup, dispatch ambulance to Heli-base for Medical AIR EVAC Flight if needed Notify receiving hospital of injury status. <p>1. CAMP EMERGENCY: Contact Medical Unit with patient complaint/condition and location. Medical Staff will respond to stabilize incident:</p> <ul style="list-style-type: none"> Medical Unit contacts: <ol style="list-style-type: none"> Communications Safety Logistics Operations Crew Supervisor <p>7. INCIDENT COMMUNICATIONS:</p> <ul style="list-style-type: none"> Command: Channel High Heaven Air to Ground: Channel White Net 	<p align="center"><u>INJURY REPORTING PROCEDURES</u></p> <p>2. EMERGENCY IC _____</p> <p>IS AN EMT WITH PATIENT: YES ____ NO ____</p> <p>IS A PARAMEDIC WITH PATIENT: YES ____ NO ____</p> <p>3. NATURE OF INJURY _____</p> <p>AGE ____ WEIGHT ____ SEX: MALE ____ FEMALE ____</p> <p>CONSCIOUS? YES ____ NO ____ BREATHING? YES ____ NO ____</p> <p>PATIENT UNIT ID _____</p> <p align="center"><small>REMINDER: DO NOT GIVE PT NAME OVER RADIO</small></p> <p>4. ____RED-URGENT____YELLOW-PRIORITY____GREEN-ROUTINE</p> <p>5. TRANSPORTATION REQUESTED BY: AIR ____ GROUND ____</p> <p>6. ADDITIONAL NEEDS _____</p> <p>8. LOCATION OF PATIENT _____</p> <p align="right"><small>Division, closest DP</small></p> <p>POINT OF PICKUP _____</p> <p>LAT _____ LONG _____</p> <p>9. CONTINGENCY _____</p>
---	--

ICS 206 5-17	9. PREPARED BY (PLANNING SECTION CHIEF) Kyle Kaupp	10. REVIEWED BY (IC) Brent O'Nion
--------------	---	--------------------------------------

FNUS76 KPQR 141722
FWSPQR

Spot Forecast for Silver Creek...ODF
National Weather Service Portland OR
1022 AM PDT Sat Jul 14 2018

Forecast is based on forecast start time of 1400 PDT on July 14.
If conditions become unrepresentative...contact the National Weather
Service Portland, Oregon office.

...WARMER SUNDAY...

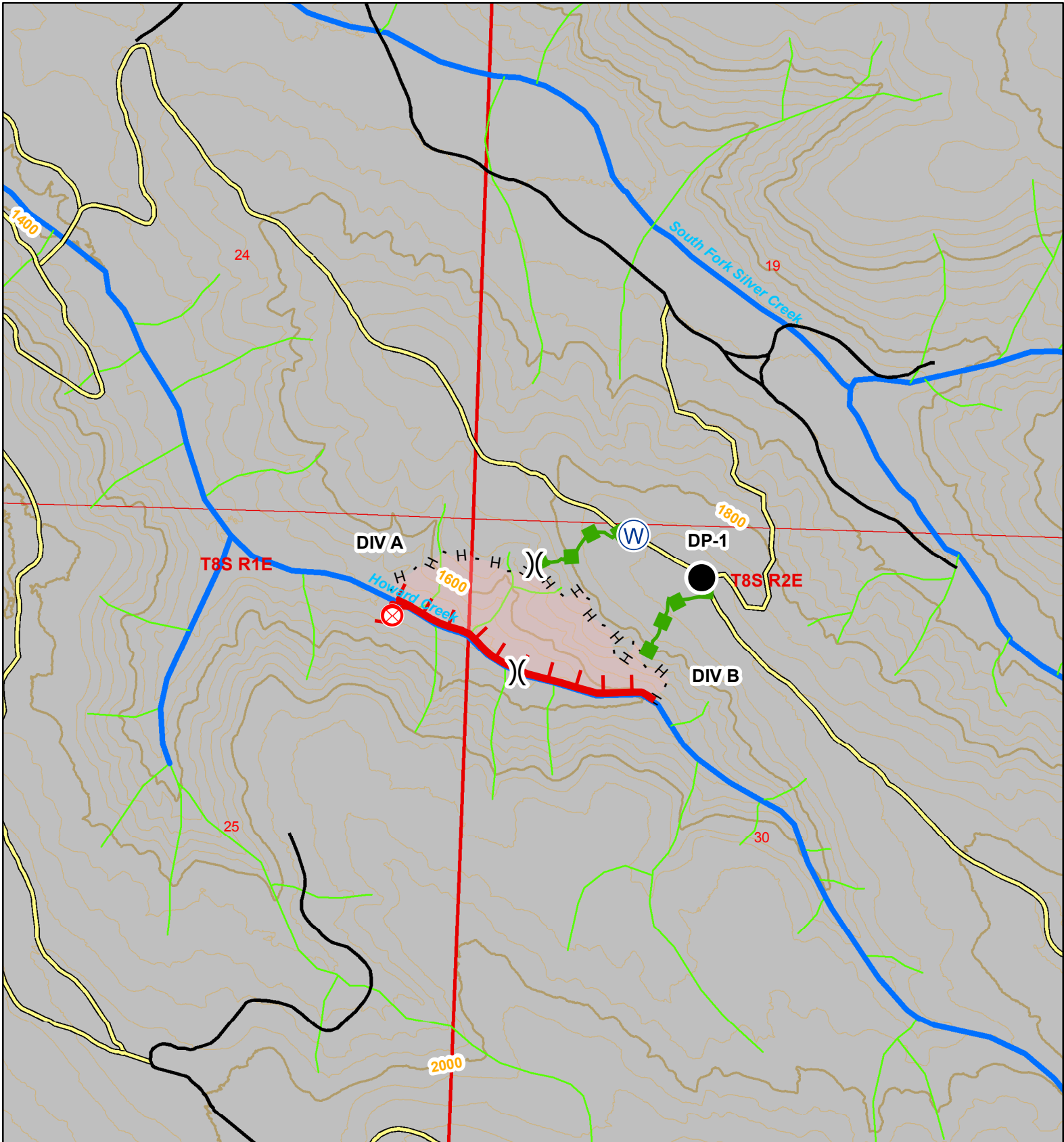
.DISCUSSION...High pressure aloft will continue for the
next few days. Onshore flow is expected to be weaker today
compared to Friday. Thus, look for terrain-driven wind
pattern. An upper level disturbance off the North California
coast Sunday morning will move east to northeast Sunday and
Sunday night. A surfaced thermal trough is forecast to
set up over the Willamette Valley or Cascade foothills
tonight, resulting in weak offshore low-level flow. The
offshore flow weakens through Sunday morning and will
eventually become onshore mid to late afternoon. Monday
and Tuesday will be a few degrees cooler than Sunday,
followed by more substantial cooling the middle and
latter parts of next week.

.REST OF TODAY...

Sky/weather.....Sunny.
CWR.....0 percent.
Chance of pcpn.....0 percent.
LAL.....1.
Max temperature.....86-91.
Min humidity.....27-35 percent.
Wind (20 ft).....
Slope/valley.....Up-slope 4 to 8 mph.
Ridgetop.....Northwest to North 5 to 10 mph.
Mixing height.....Rising to around 3500 ft AGL.
Transport winds.....North around 7 mph.
Haines Index(High)..5 (moderate).
Haines Index (Mid)..5 (moderate).
Rainfall amount.....0.00 inches.

.TONIGHT...

Sky/weather.....Mostly clear.
CWR.....0 percent.
Chance of pcpn.....0 percent.
LAL.....1.
Min temperature.....58-63.
Max humidity.....65-80 percent.
Wind (20 ft).....
Slope/valley.....Up-slope 4 to 8 mph early evening then
decreasing. Wind becoming local drainage
to 5 mph after dark.
Ridgetop.....North 4 to 8 mph, shifting to East after



Legend

- | | | | | | |
|--|----------------|--|------------------------|-------------------|-----------------------|
| | Port-a-Tank | | Escape Route | Highways | Streams |
| | Drop Point | | Uncontrolled Fire Edge | Route Type | Fish Presence |
| | Division Break | | Completed Handline | | |
| | Fire Origin | | Fire Polygon | | |
| | | | | | |
| | | | | | 40 ft Contours |
| | | | | | Contour Type |
| | | | | | |
| | | | | | |

IAP Map

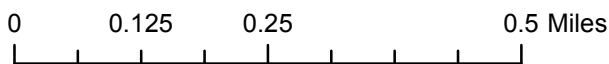
Silver Creek Fire Fire # 582008

Approximate Acres: 27



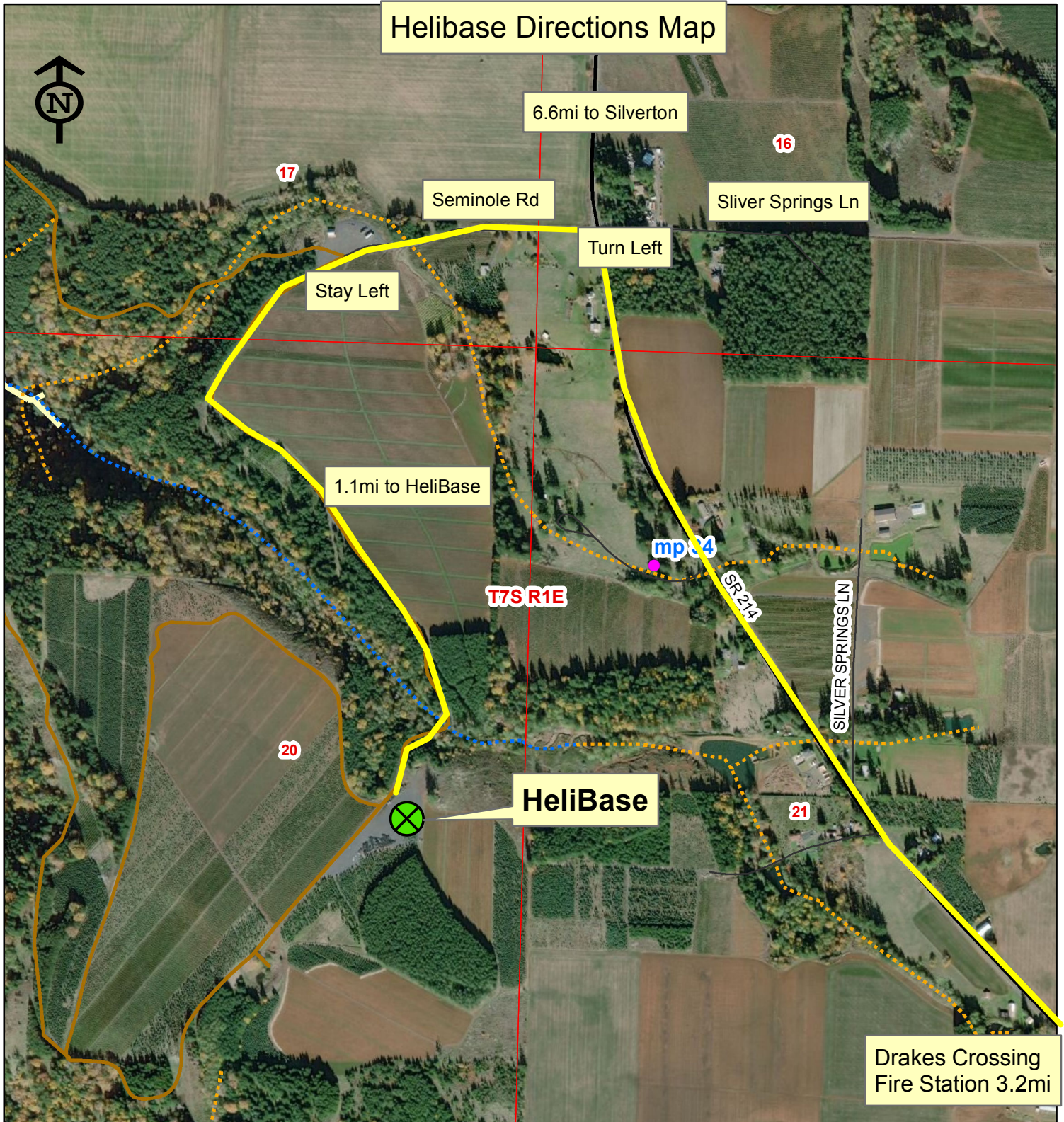
Date: 07/14/2018
Created By: Kyle Kaupp @ 2220

1 inch = 1,000 feet



Projection: NAD 83
Oregon Statewide Lambert Intl.

Helibase Directions Map



From the Drakes crossing Fire Station head North on HWY 214 for 3.2 miles and turn Left onto Seminole Rd (1500ft past MP 34). Continue on Seminole (staying Left at Junct after .25mi) for 1.1 mi to the Helibase Location.
From Silverton Head South on Hwy 214 for Approx. 6.6mi. and turn Right onto Seminole Rd.

Source: Esri, DigitalGlobe, GeoEye, Earthstar Geographics, CNES/Airbus DS, USDA, USGS, AeroGRID, IGN, and the GIS User Community