

# Silver Creek Fire

PJT58200819

Incident Action Plan



Monday

**07/16/2018**

Day Shift

0630 - 1830

<b>Incident Objectives</b>	1. Incident Name <i>Silver Creek Fire</i>	2. Date Prepared <i>07/15/2018</i>	3. Time Prepared <i>1815</i>
4. Operational Period (Date and Time) <i>07/16/2018 0630 - 1830</i>			
5. General Control Objectives for the Incident (include Alternatives)			
- Fight fire aggressively and safely; maintain LCES at all times.			
- Minimize fire size perimeter through the use of direct tactics and a staffed night shift where possible.			
- Maintain and build positive relationship with landowners, general public, and Silver Falls State Park Staff			
- Establish handline along Howard Creek			
- Mop-up 50' from containment lines			
- Continue mitigating snag hazards where it can be safely done inside and outside fire perimeter			
See attached weather forecast			
7. General Safety Message			
- High public use area, stay hydrated, and always maintain situational awareness			
ICS-202	9. Prepared by (PSC) Kyle Kaupp	10. Approved by (IC) Brent O'Nion	

<b>DIVISION ASSIGNMENT LIST</b>		1. Branch	2. Division <b>A</b>				
3. Incident Name Silver Creek Fire		4. Operational Period Date: 07/16/2018 Time: 0630 - 1830					
<b>5. Operations Personnel</b>							
Operations Chief	Eric Perkins	Division/Group Supervisor			Marc Desjardin		
Branch Director		Safety Officer					
<b>6. Resources Assigned this Period</b>							
Resource	Name	Personnel	Company	Notes	Resource #		
Type 2 Crew	Franco Reforestation	20	Franco Reforestation		C-14		
Type 2 Crew	R Franco Reforestation	20	R Franco Reforestation		C-15		
FALM	VanHoose	2					
Type 6 Engine	Morton	2	ODF	Forest Grove	E-3		
TFLD	Spencer Mitchell	1	ODF		O-9		
FALM	Gabe Silbernagel	2					
FELB	Andrew Arvin	1	ODF		O-17		
7. Control Operations Initial attack fire, build control lines, and mitigate overhead hazards. Mop-up 50' inside containment lines.							
8. Special Instructions							
<b>9. Division/Group Communication Summary</b>							
Function	Branch	Frequency Rx	Tone	Frequency Tx	Tone	Channel	Remarks
Command		151.28000	162.2	159.27000	162.2	6	FC Relay
Tactical		151.34000	156.7	151.34000	156.7	3	Red Net
A/G		151.31000	156.7	151.31000	156.7	4	White Net
Prepared by (RESL)		Approved by (PSC)			Date		Time
Kyle Kaupp		Kyle Kaupp			07/15/2018		1815

<b>DIVISION ASSIGNMENT LIST</b>		1. Branch		2. Division <b>B</b>			
3. Incident Name Silver Creek Fire		4. Operational Period Date: 07/16/2018 Time: 0630 - 1830					
<b>5. Operations Personnel</b>							
Operations Chief		Eric Perkins		Division/Group Supervisor		Mike Haasken	
Branch Director				Safety Officer			
<b>6. Resources Assigned this Period</b>							
Resource	Name	Personnel	Company	Notes		Resource #	
Type 2 Crew	Tom Fery Farm	20	Tom Fery Farm			C-7	
Type 2 Crew	J Franco	20	J Franco			C-8	
Type 2 Crew	West Coast Reforestation	20	West Coast Reforestation			C-16	
TFLD	David Helmricks	1	ODF			O-14	
DOZER	Matt Chavarria	1	Jan Hupp				
Tender 448	Mike Williams	1	Drakes Crossing	Paramedic			
Tender 449	Chris Debrito	1	Drakes Crossing	EMT - Basic			
Tender 418	Joe Humutoff	1	Silverton Fire				
Type 6 Engine	Lambert	2	ODF	West Oregon		E-2	
FELB	Steven Cooke	1	BLM			O-18	
FALM	Zyglinski	2					
7. Control Operations Initial attack fire, build control lines, and mitigate overhead hazards. Mop-up 50' inside containment lines.							
8. Special Instructions							
<b>9. Division/Group Communication Summary</b>							
Function	Branch	Frequency Rx	Tone	Frequency Tx	Tone	Channel	Remarks
Command		151.28000	162.2	159.27000	162.2	6	FC Relay
Tactical		159.26250	156.7	159.26250	156.7	5	Blue Net
A/G		151.31000	156.7	151.31000	156.7	4	White Net
Prepared by (RESL)		Approved by (PSC)			Date		Time
Kyle Kaupp		Kyle Kaupp			07/15/2018		1815



INCIDENT RADIO COMMUNICATIONS PLAN		Incident Name Silver Creek Fire			Date/Time Prepared 07/15/2018 @ 1845	Operational Period Date/Time 07/16/2018 0630 - 1830			
Ch #	Function	Channel Name/Trunked Radio System Talkgroup	Assignment	RX Freq N or W	RX Tone/NAC	TX Freq N or W	TX Tone/NAC	Mode A, D or M	Remarks
1		Horeb		151.20500	179.9	159.43500	151.4		
2	District IA	High Heaven		151.20500	179.9	159.43500	179.9		Command Secondary/Helibase
3	Tactical	Red Net		151.34000	156.7	151.34000	156.7		Tactical Primary
4	Air/Ground	White Net		151.31000	156.7	151.31000	156.7		Air to Ground
5	Tactical	Blue Net		159.26250	156.7	159.26250	156.7		Tactical Secondary
6	Command	FC Relay		151.28000	162.2	159.27000	162.2		Command Primary
7		South 2		154.01000	123.0	154.01000	123.0		
8		South 3		154.25000	123.0	154.25000	123.0		
9		South 4		154.29500	123.0	154.29500	123.0		
10		Linn Co 1		154.31000	167.9	154.31000	167.9		
11		Linn Co 2		154.13000	167.9	154.13000	167.9		
12		Linn Co 3		153.99500	167.9	153.99500	167.9		
13		Linn Co 4		155.56500	167.9	155.56500	167.9		
14		North 1		154.16000	123.0	154.16000	123.0		
15		North 7		154.21250	D516N	158.96250	D516N		
16		Repeater		170.42500		170.42500	156.7		
Prepared By (Communications Unit)				Incident Location					
Kyle Kaupp				County	State	Latitude	Longitude		

The convention calls for frequency lists to show four digits after the decimal place, followed by either an "N" or a "W", depending on whether the frequency is narrow or wide band. Mode refers to either "A" or "D" indicating analog or digital (e.g. Project 25) or "M" indicating mixed mode. All channels are shown as if programmed in a control station, mobile or portable radio. Repeater and base stations must be programmed with the Rx and Tx reversed.



## Safety Analysis of Tactical Actions (215A)

Incident Name: Silver Creek Fire				Date and Time Prepared: 7/15/18 - 1030				Operational Period: Day 7/16/18 - 0630 to 1830							
<b>TACTICAL HAZARDS</b>												<b>LCES MITIGATION</b>			
	A	B													
Indirect Fireline												Establish LCES. Insure that communications between lookouts and line resources are maintained. Escape Routes are identified and reevaluated continuously.			
Downhill Fireline												Follow downhill line standards. Bring fire with you. Insure lookout can see entire area. Identify safety zones and escape routes before starting work. Use page 9 of Incident Response Pocket Guide 2014. Establish LCES.			
Underslung Fireline												Cup trench. Post lookout that can see all areas of under stung line. Establish LCES.			
Mid-Slope Fireline	X	X										insure that lookouts can see ALL area of mid slope line as well as areas upslope of mid slope line. Establish Trigger Points and reassess as fire or weather conditions change. Establish LCES.			
Frontal Assault												Identify thresholds for reassessment. Establish LCES.			
No Anchor Points												Find/construct safe, effective anchor before engaging. Establish LCES.			
Extreme Conditions (Spotting, Wind)												High potential given because of low live fuel moisture and high probability of ignition. Anticipate. Identify thresholds for reassessment, monitor weather. Establish LCES.			
Heavy Equipment												Do not work down slope below heavy equipment. Establish communications with operator. Post lookout for rolling debris. Be aware of loose soil and rock. Establish LCES.			
Air Operations Multi Aircraft	X	X										Insure that all personnel are at least 500 feet from bucket or retardant drops. Utilize air attack. Establish LCES.			
Hazard Trees/Snags	X	X										Assess, Identify, Communicate, Isolate, Mitigate. Establish LCES.			
Hazardous Materials												Utilize the Incident Response Pocket Guide. Identify and isolate any suspected hazardous materials. Notify supervisor and warn others in area. Keep your distance. Establish LCES.			
Unburned Area Unknown Fires												High potential for re-burn in brush and corners preheated by earlier burn. Blowdown areas keep a close eye on. Post lookouts. Watch for increase in burn activity. Monitor weather for change in RH and or wind conditions. Establish LCES.			
Transportation	X	X										Drive defensively with headlights on, seatbelts fastened. Stay to the right side of the road. Yield to downhill traffic and flaggers. Drive slowly and watch out for the other person. Establish LCES.			
Communication												Establish LCES. Insure that communications between lookouts and line resources are maintained. Escape Routes are identified and reevaluated continuously.			
Steep Terrain Gravity Hazards	X	X										Do not work crews above or below each other. Post lookouts for rolling material. Watch footing in loose or wet soil and rock. Do not work below heavy equipment. Establish LCES.			
Environmental Hazards	X	X										Bees, and other animals are in the area. Carry medical kits for those with allergic reactions, do not harass or instigate any confrontations with animals, warn others of presence.			
Structures												Follow page(s) 13-16 of Incident Pocket Response Guide 2014. Establish LCES.			
Transfer of Command												Make sure you understand your assignment. Know who your supervisor is and who is working for you. Do not assume. Re-brief all resources.			
Span of Control												Adhere to Span of Control Guidelines-5:1. Ensure Overhead is sufficient for operation and identify chain of command. Ensure everyone receives a briefing. Retain control at all times.			
Falling Operations	X	X										Post road guards. Have a falling boss who can be in contact with crews working in the area. Use qualified Fallers.			
Power Lines												Watch for down power lines and poles. Identify, isolate and report. Notify supervisor and warn others in area. Keep your distance.			
I.A. / Staging												Follow the 10 and 18, LCES - before engaging, re-evaluate for each new start!			
Public	X	X										Identify, Establish communication with public, Notify Supervisor, Mitigate risk to Public.			
Operations Section Chiefs: Eric Perkins				Date / Time: 7/15/18 - 1030				Safety Officers: Scott West				Date / Time: 7/15/18 - 1030			

# HEALTH AND SAFETY MESSAGE

*SAFETY* starts with *YOU*

We are ALL accountable for SAFE behaviors

INCIDENT: Silver Creek Fire

DATE: 7/16/18

Oper. Period: Day

## Major Hazards and Risks:

- Narrow Roads
- Snags
- Low Visibility do to Dust
- Public in the Area of the Fire
- Steep ground, watch footing and for rollers

Fire Order of the Day – *Fight fire Safely and aggressively*

## Narrative:

- Have clear contact and communications with all air resources within your area.
- Make sure you are in good communication with all resources and with ICP.
- Drive Slow and have headlights on at all times.
- Be aware of working distance and position when working around Fallers & air craft.
- Look up, down and around.
- Make sure LCES is in placed at all times.
- Review and follow the 206 Medical Plan for all medical incidents.
- Stay Hydrated.

## Watch Out Situation #6



## Instructions & Assignments Not Clear Make sure you:

1. Brief others
2. Debrief your actions
3. Communicate hazards to others
4. Acknowledge messages
5. Ask if you do not know

## Escape Route/Safety Zone Checklist

### Escape Routes:

- \*More than one escape route
- \*Scouted – soils, vegetation, slope
- \*Timed – slowest person, fatigue, dozer speed
- \*Marked – flagged for day and night use

### Safety Zones:

- \*Survivable without a shelter
- \*Natural – clean burn, water, bare soil/rock
- \*Manmade – constructed sites, roads
- \*Scouted for size and hazards
- \*Close enough considering escape time needed

### Remember and Follow:

- \*The 10 Standard Fire Orders
- \*The 18 Situations That Shout Watch Out
- \*The Common Denominators of Fire Behavior on Tragedy Fires
- \***The Downhill Line Construction Guidelines**

Incident Safety Officer: Scott West



<b>MEDICAL PLAN</b>	1. INCIDENT NAME	2. DATE PREPARED	3. TIME PREPARED	4. OPERATIONAL PERIOD
	Silver Creek Fire	07/15/18	2000	07/15/18

**5. INCIDENT MEDICAL AID STATIONS**

MEDICAL AID STATIONS	LOCATION	PARAMEDICS	
		YES	NO
Drakes Crossing Fire Department	19364 Powers Creek Loop Rd NE, Silverton, OR 97381	X	

**6. TRANSPORTATION**

**A. Air Ambulances**

NAME	ADDRESS	PHONE	PARAMEDICS	
			YES	NO
Life Flight	Portland	1-800-452-7434	X	
Air Life	La Grande/Bend	1-800-621-5433	X	

**B. Ground Ambulances**

NAME	ADDRESS	PHONE	PARAMEDICS
Santiam Ambulances Service	1401 N. 10 <sup>th</sup> , Stayton, OR	911/503-769-2175	X

**7. HOSPITALS**

NAME	ADDRESS	TRAVEL TIME		PHONE	HELIPAD		BURN CENTER	
		AIR	GRND		YES	NO	YES	NO
Santiam Memorial Hospital	1401 N. 10 <sup>th</sup> , Stayton, OR	10min	20min	503-769-2175	X			X
Providence Portland	3181 Sam Jackson Park Rd. Portland OR	30min	90min	509-525-3320	X			X
Legacy Emmanuel	2801 N. Gantenbein Ave, Portland, OR	30min	90min	503-413-2200	X		X	

**8. MEDICAL EMERGENCY PROCEDURES**

**1. LINE EMERGENCY:** Crew Supervisor to contact Division Supervisor with patient complaint/condition and location.

- Division Supervisor contacts:
  - Line EMT / PM
  - Communications Unit
- Communication Unit will clear command channel for emergency traffic
- Communications Unit contacts:
  - Medical Unit
  - Safety
  - Operations
- Division Supervisor will run medical emergency on command channel
- Medical Unit will:
  1. Dispatch ground ambulance to nearest drop-point for ground transport only.
  2. Or after patient pickup, dispatch ambulance to Helibase for Medical AIR EVAC Flight if needed
  3. Notify receiving hospital of injury status.

**1. CAMP EMERGENCY:** Contact Medical Unit with patient complaint/condition and location. Medical Staff will respond to stabilize incident:

- Medical Unit contacts:
  1. Communications
  2. Safety
  3. Logistics
  4. Operations
  5. Crew Supervisor

**7. INCIDENT COMMUNICATIONS:**

- Command: Channel High Heaven
- Air to Ground: Channel White Net

**INJURY REPORTING PROCEDURES**

**2. EMERGENCY IC** \_\_\_\_\_

IS AN EMT WITH PATIENT: YES \_\_\_\_ NO \_\_\_\_

IS A PARAMEDIC WITH PATIENT: YES \_\_\_\_ NO \_\_\_\_

**3. NATURE OF INJURY** \_\_\_\_\_

AGE \_\_\_\_\_ WEIGHT \_\_\_\_\_ SEX: MALE \_\_\_ FEMALE \_\_\_

CONSCIOUS? YES \_\_\_ NO \_\_\_ BREATHING? YES \_\_\_ NO \_\_\_

PATIENT UNIT ID \_\_\_\_\_

REMINDER: DO NOT GIVE PT NAME OVER RADIO

**4. \_\_\_RED-URGENT\_\_\_ YELLOW-PRIORITY \_\_\_ GREEN-ROUTINE**

**5. TRANSPORTATION REQUESTED BY: AIR \_\_\_ GROUND \_\_\_**

**6. ADDITIONAL NEEDS** \_\_\_\_\_

**8. LOCATION OF PATIENT** \_\_\_\_\_

Division, closest DP

POINT OF PICKUP \_\_\_\_\_

LAT \_\_\_\_\_ LONG \_\_\_\_\_

**9. CONTINGENCY** \_\_\_\_\_

ICS 206 5-17	9. PREPARED BY (PLANNING SECTION CHIEF) Kyle Kaupp	10. REVIEWED BY (IC) Brent O'Nion
--------------	---	--------------------------------------

FNUS76 KPQR 160302  
FWSPQR

Spot Forecast for Silver Creek...Oregon Department of Forestry  
National Weather Service Portland OR  
802 PM PDT Sun Jul 15 2018

Forecast is based on forecast start time of 2000 PDT on July 15.  
If conditions become unrepresentative...contact the National Weather  
Service Portland, Oregon office.

...HOT AND DRY WEATHER TO CONTINUE MONDAY...

.DISCUSSION...Little change is expected to the hot and dry weather  
pattern Monday, at least through the afternoon. Thermal low  
pressure sprawls across much of Oregon and Washington, both west  
and east of the Cascades. This thermal trough will gradually  
shift east of the Cascades later Monday through Tuesday, allowing  
for some increase in onshore flow. Initially, this will have  
little to no impact on temperatures and RH Monday afternoon, as  
the marine layer remains very shallow. The marine layer is  
expected to deepen somewhat Monday night and Tuesday, allowing for  
some moderation in temperatures and RH. West to Northwest winds  
will likely be a tad stronger on Tuesday as well.

.REST OF TONIGHT...

Sky/weather.....Mostly clear.  
CWR.....Near zero.  
Chance of pcpn.....Near zero.  
LAL.....1.  
Min temperature.....Around 60.  
Max humidity.....75-85 percent.  
Wind (20 ft).....  
Slope/valley.....Down-drainage to 5 mph.  
Ridgetop.....Northwest 2 to 5 mph becoming east overnight.  
Mixing height.....1000 ft AGL early evening then near surface.  
Transport winds.....Northwest 3 to 6 mph, becoming northeast 5 to  
10 mph overnight.  
Haines Index(High)..4 (low).  
Haines Index (Mid)..5 (moderate).  
Rainfall amount.....0.00 inches.

.MONDAY...

Sky/weather.....Mostly sunny.  
CWR.....Near zero.  
Chance of pcpn.....Near zero.  
LAL.....1.  
Max temperature.....90-95.  
Min humidity.....20-25 percent.  
Wind (20 ft).....  
Slope/valley.....Upslope 2 to 6 mph becoming Northwest 4 to 8 mph  
with gusts to 15 mph in the afternoon.  
Ridgetop.....East 1 to 4 mph early, shifting to Northwest  
2 to 6 mph by early afternoon, then increasing to

4 to 8 mph with gusts to 15 mph.  
Mixing height.....Near surface early, rising to around 4000 ft AGL  
for the afternoon.  
Transport winds.....Northeast 4 to 8 mph, becoming Northwest 6 to  
12 mph for the afternoon.  
Haines Index(High)..4 (low).  
Haines Index (Mid)..4 (low).  
Rainfall amount.....0.00 inches.

.MONDAY NIGHT...

Sky/weather.....Mainly clear.  
CWR.....0 percent.  
Chance of pcpn.....0 percent.  
LAL.....1.  
Min temperature.....Around 55.  
Max humidity.....75-90 percent.  
Wind (20 ft).....  
Slope/valley.....Northwest 3 to 7 mph early evening, then down-  
drainage 5 mph or less.  
Ridgetop.....Northwest 4 to 8 mph with early evening gusts  
to 15 mph, then diminishing.  
Mixing height.....3500 ft AGL early evening then near surface.  
Transport winds.....West to Northwest 5 to 10 mph early, then  
diminishing.  
Haines Index(High)..5 (moderate).  
Haines Index (Mid)..4 (low).  
Rainfall amount.....0.00 inches. .

.TUESDAY...

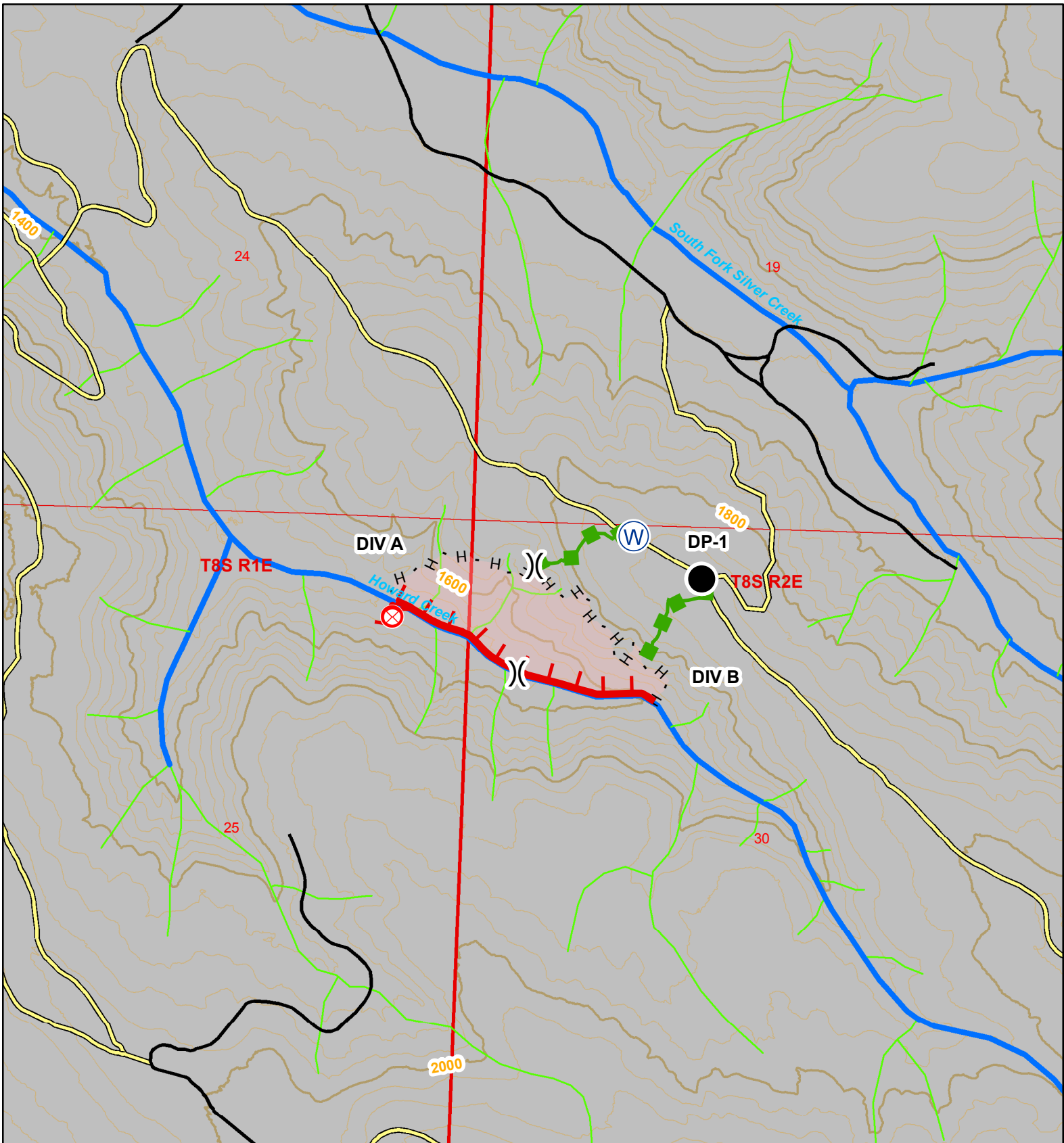
Sky/weather.....Sunny.  
CWR.....0 percent.  
Chance of pcpn.....0 percent.  
LAL.....1.  
Max temperature.....84-88.  
Min humidity.....25-30 percent.  
Wind (20 ft).....  
Slope/valley.....Upslope 2 to 6 mph becoming Northwest 5 to 8 mph  
with gusts up to 18 mph in the afternoon.  
Ridgetop.....Light wind early, becoming West to Northwest  
5 to 9 mph with gusts up to 18 mph in the  
afternoon.  
Mixing height.....Near surface then 3500-4000 ft AGL.  
Transport winds.....Light and variable early, increasing West to  
Northwest 10 to 15 mph during the afternoon.  
Haines Index(High)..5 (moderate).  
Haines Index (Mid)..5 (moderate).  
Rainfall amount.....0.00 inches.

\$\$

Forecaster...Weagle  
Requested by...Kyle Kaupp  
Type of request...WILDFIRE  
.TAG 1812866.0/PQR  
.DELDT 07/15/18  
.EMAIL [kyle.f.kaupp@oregon.gov](mailto:kyle.f.kaupp@oregon.gov)







**Legend**

- |  |                |  |                        |                   |                       |
|--|----------------|--|------------------------|-------------------|-----------------------|
|  | Port-a-Tank    |  | Escape Route           | <b>Highways</b>   | <b>Streams</b>        |
|  | Drop Point     |  | Uncontrolled Fire Edge | <b>Route Type</b> | <b>Fish Presence</b>  |
|  | Division Break |  | Completed Handline     |                   |                       |
|  | Fire Origin    |  | Fire Polygon           |                   |                       |
|  |                |  |                        |                   |                       |
|  |                |  |                        |                   | <b>40 ft Contours</b> |
|  |                |  |                        |                   | <b>Contour Type</b>   |
|  |                |  |                        |                   |                       |
|  |                |  |                        |                   |                       |

# IAP Map

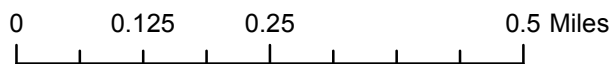
## Silver Creek Fire Fire # 582008

Approximate Acres: 27



Date: 07/15/2018  
Created By: Kyle Kaupp @ 1900

1 inch = 1,000 feet



Projection: NAD 83  
Oregon Statewide Lambert Intl.