

Silver Creek Fire

PJT58200819

Incident Action Plan



Tuesday

07/17/2018

Day Shift

0630 - 1830

Incident Objectives	1. Incident Name <i>Silver Creek Fire</i>	2. Date Prepared <i>07/16/2018</i>	3. Time Prepared <i>1800</i>
4. Operational Period (Date and Time) <i>07/17/2018 0630 - 1830</i>			
5. General Control Objectives for the Incident (include Alternatives)			
- Fight fire aggressively and safely; maintain LCES at all times.			
- Minimize fire size perimeter through the use of direct tactics and a staffed night shift where possible.			
- Maintain and build positive relationship with landowners, general public, and Silver Falls State Park Staff			
- Establish handline along Howard Creek			
- Mop-up 50' from containment lines			
- Continue mitigating snag hazards where it can be safely done inside and outside fire perimeter			
See attached weather forecast			
7. General Safety Message			
- High public use area, stay hydrated, and always maintain situational awareness			
ICS-202	9. Prepared by (PSC) Kyle Kaupp	10. Approved by (IC) Brent O'Nion	

ORGANIZATION ASSIGNMENT LIST			9. Operations Section		
1. Incident Name		Silver Creek Fire		Chief	Eric Perkins (O-1)
2. Date	07/16/2018	3. Time	1800	Deputy	
4. Operational Period		07/17/2018	0630 - 1830	a. Branch I - Division/Groups	
5. Incident Commander and Staff			Division A	Marc Desjardin (O-8)	
Incident Commander	Brent O'Nion (O-2)		Division B	Mike Haasken (O-15)	
Deputy					
Safety Officer	Jesse Batson				
Information Officer	Ryan Gordon (O-28)				
Information Officer					
Agency Admin			b. Branch II - Division/Groups		
ODF	Steve Wilson				
Deputy ODF	Levi Hopkins				
Silver Falls	Craig Leech				
Drakes Crossing	Fred Patterson				
USFS					
OSFM					
USFS Res. Advisor					
LOFR - Hood River			c. Group		
7. Planning Section					
Chief	Kyle Kaupp (O-31)				
Deputy					
Resource Unit	Dawn Sleight				
Situation Unit					
Demobilization Unit					
IMET			d. Air Operations Branch		
FBAN			Air Ops Branch Director		
Technical Specialists	Danny Norlander		Air Support Supervisor		
Investigation - ODF			Air Attack Supervisor	Neal Laugle	
Radio Operator	Renee Shippey (O-27)		Helibase Manager		
Training Specialist			Air Tanker Coordinator		
FOBS			10. Finance Section		
8. Logistics Section			Chief	Chad Montoya	
Chief			Deputy		
Deputy			Time Unit	Pat Swehosky	
Service Branch Dir.			Procurement Unit		
Support Branch Dir.			Comp/Claims Unit		
Supply Unit			Cost Unit		
Ground Support Unit	Mike Thompson		CRNW		
Communications Unit					
Medical Unit			Prepared by (Planning Section Chief)		
Ordering Unit			Kyle Kaupp		
Food Unit					
Facilities Unit Leader	Macy Yates (O-21)				

DIVISION ASSIGNMENT LIST		1. Branch		2. Division A			
3. Incident Name Silver Creek Fire		4. Operational Period Date: 07/17/2018 Time: 0630 - 1830					
5. Operations Personnel							
Operations Chief		Eric Perkins		Division/Group Supervisor		Marc Desjardin	
Branch Director				Safety Officer		Jesse Batson	
6. Resources Assigned this Period							
Resource	Name	Personnel	Company	Notes		Resource #	
Type 2 Crew	Franco Reforestation	20	Franco Reforestation			C-14	
Type 2 Crew	R Franco Reforestation	20	R Franco Reforestation			C-15	
FALM	VanHoose	2					
Type 6 Engine	Morton	2	ODF	Forest Grove		E-3	
TFLD	Spencer Mitchell	1	ODF			O-9	
FELB	Andrew Arvin	1	ODF			O-17	
7. Control Operations Build control lines and mitigate overhead hazards. Mop-up 50' inside containment lines.							
8. Special Instructions							
9. Division/Group Communication Summary							
Function	Branch	Frequency Rx	Tone	Frequency Tx	Tone	Channel	Remarks
Command		151.28000	162.2	159.27000	162.2	6	FC Relay
Tactical		151.34000	156.7	151.34000	156.7	3	Red Net
A/G		151.31000	156.7	151.31000	156.7	4	White Net
Prepared by (RESL)		Approved by (PSC)			Date		Time
Kyle Kaupp		Kyle Kaupp			07/16/2018		1800

DIVISION ASSIGNMENT LIST		1. Branch		2. Division B			
3. Incident Name Silver Creek Fire		4. Operational Period Date: 07/17/2018 Time: 0630 - 1830					
5. Operations Personnel							
Operations Chief		Eric Perkins		Division/Group Supervisor		Mike Haasken	
Branch Director				Safety Officer		Jesse Batson	
6. Resources Assigned this Period							
Resource	Name	Personnel	Company	Notes		Resource #	
Type 2 Crew	Tom Fery Farm	20	Tom Fery Farm			C-7	
Type 2 Crew	J Franco	20	J Franco			C-8	
Type 2 Crew	West Coast Reforestation	20	West Coast Reforestation			C-16	
TFLD	David Helmricks	1	ODF			O-14	
DOZER	Matt Chavarria	1	Jan Hupp				
Tender 448	Mike Williams	1	Drakes Crossing	Paramedic			
Tender 449	Chris Debrito	1	Drakes Crossing	EMT - Basic			
Tender 418	Joe Humutoff	1	Silverton Fire				
Type 6 Engine	Lambert	2	ODF	West Oregon		E-2	
FELB	Steven Cooke	1	USFS			O-18	
FALM	Ziglinski	2					
7. Control Operations Build control lines and mitigate overhead hazards. Mop-up 50' inside containment lines.							
8. Special Instructions							
9. Division/Group Communication Summary							
Function	Branch	Frequency Rx	Tone	Frequency Tx	Tone	Channel	Remarks
Command		151.28000	162.2	159.27000	162.2	6	FC Relay
Tactical		159.26250	156.7	159.26250	156.7	5	Blue Net
A/G		151.31000	156.7	151.31000	156.7	4	White Net
Prepared by (RESL)		Approved by (PSC)			Date		Time
Kyle Kaupp		Kyle Kaupp			07/16/2018		1800

DIVISION ASSIGNMENT LIST		1. Branch		2. Division Night Shift			
3. Incident Name Silver Creek Fire		4. Operational Period Date: 07/17/2018 Time: 1830 - 0630					
5. Operations Personnel							
Operations Chief		Eric Perkins		Division/Group Supervisor			
Branch Director				Safety Officer			
6. Resources Assigned this Period							
Resource	Name	Personnel	Company	Notes		Resource #	
Type 6 Engine	Helgerson & Dunn	2	ODF	17-471 IR Crew		5863	
ICT4(t)	Waibel	1	ODF				
Palm IR Camera						E-4	
7. Control Operations							
8. Special Instructions Patrol, Utilize Palm IR Camera to find hot spots and keep in contact with NC District Fire personnel							
9. Division/Group Communication Summary							
Function	Branch	Frequency Rx	Tone	Frequency Tx	Tone	Channel	Remarks
Command		151.20500	179.9	159.43500	179.9	2	High Heaven
Tactical		151.34000	156.7	151.34000	156.7	3	Red Net
Tactical		159.26250	156.7	159.26250	156.7	5	Blue Net
A/G		151.31000	156.7	151.31000	156.7	4	White Net
Prepared by (RESL)		Approved by (PSC)			Date		Time
Kyle Kaupp		Kyle Kaupp			07/16/2018		1800

INCIDENT RADIO COMMUNICATIONS PLAN		Incident Name Silver Creek Fire			Date/Time Prepared 07/16/2018 @ 1845	Operational Period Date/Time 07/17/2018 0630 - 1830			
Ch #	Function	Channel Name/Trunked Radio System Talkgroup	Assignment	RX Freq N or W	RX Tone/NAC	TX Freq N or W	Tx Tone/NAC	Mode A, D or M	Remarks
1		Horeb		151.20500	179.9	159.43500	151.4		
2	District IA	High Heaven		151.20500	179.9	159.43500	179.9		Command Secondary/Helibase
3	Tactical	Red Net		151.34000	156.7	151.34000	156.7		Tactical Primary
4	Air/Ground	White Net		151.31000	156.7	151.31000	156.7		Air to Ground
5	Tactical	Blue Net		159.26250	156.7	159.26250	156.7		Tactical Secondary
6	Command	FC Relay		151.28000	162.2	159.27000	162.2		Command Primary
7		South 2		154.01000	123.0	154.01000	123.0		
8		South 3		154.25000	123.0	154.25000	123.0		
9		South 4		154.29500	123.0	154.29500	123.0		
10		Linn Co 1		154.31000	167.9	154.31000	167.9		
11		Linn Co 2		154.13000	167.9	154.13000	167.9		
12		Linn Co 3		153.99500	167.9	153.99500	167.9		
13		Linn Co 4		155.56500	167.9	155.56500	167.9		
14		North 1		154.16000	123.0	154.16000	123.0		
15		North 7		154.21250	D516N	158.96250	D516N		
16		Repeater		170.42500		170.42500	156.7		
Prepared By (Communications Unit)				Incident Location					
Kyle Kaupp				County	State	Latitude	Longitude		

The convention calls for frequency lists to show four digits after the decimal place, followed by either an "N" or a "W", depending on whether the frequency is narrow or wide band. Mode refers to either "A" or "D" indicating analog or digital (e.g. Project 25) or "M" indicating mixed mode. All channels are shown as if programmed in a control station, mobile or portable radio. Repeater and base stations must be programmed with the Rx and Tx reversed.

HEALTH AND SAFETY MESSAGE

SAFETY starts with *YOU*

We are ALL accountable for SAFE behaviors

INCIDENT: Silver Creek Fire

DATE: 7/17/18

Oper. Period: Day

Major Hazards and Risks:

- Narrow Roads
- Snags
- Low Visibility do to Dust
- Public in the Area of the Fire
- Steep ground, watch footing and for rollers

Fire Order of the Day – Fight fire Safely and aggressively

Narrative:

- Have clear contact and communications with all air resources within your area.
- Make sure you are in good communication with all resources and with ICP.
- Drive Slow and have headlights on at all times.
- Be aware of working distance and position when working around Fallers & air craft.
- Look up, down and around.
- Make sure LCES is in placed at all times.
- Review and follow the 206 Medical Plan for all medical incidents.
- Stay Hydrated.

Watch Out Situation #6



Instructions & Assignments Not Clear Make sure you:

1. Brief others
2. Debrief your actions
3. Communicate hazards to others
4. Acknowledge messages
5. Ask if you do not know

Escape Route/Safety Zone Checklist

Escape Routes:

- *More than one escape route
- *Scouted – soils, vegetation, slope
- *Timed – slowest person, fatigue, dozer speed
- *Marked – flagged for day and night use

Safety Zones:

- *Survivable without a shelter
- *Natural – clean burn, water, bare soil/rock
- *Manmade – constructed sites, roads
- *Scouted for size and hazards
- *Close enough considering escape time needed

Remember and Follow:

- *The 10 Standard Fire Orders
- *The 18 Situations That Shout Watch Out
- *The Common Denominators of Fire Behavior on Tragedy Fires
- *The Downhill Line Construction Guidelines

Incident Safety Officer: Jesse Batson



Safety Analysis of Tactical Actions (215A)

Incident Name: Silver Creek Fire			Date and Time Prepared: 07/16/18 1800												Operational Period: Day 07/17/18 0630-1830
TACTICAL HAZARDS													LCES MITIGATION		
	A	B													
Indirect Fireline															Establish LCES. Insure that communications between lookouts and line resources are maintained. Escape Routes are identified and reevaluated continuously.
Downhill Fireline															Follow downhill line standards. Bring fire with you. Insure lookout can see entire area. Identify safety zones and escape routes before starting work. Use page 9 of Incident Response Pocket Guide 2014. Establish LCES.
Underslung Fireline															Cup trench. Post lookout that can see all areas of under slung line. Establish LCES.
Mid-Slope Fireline	X	X													Insure that lookouts can see ALL area of mid slope line as well as areas upslope of mid slope line. Establish Trigger Points and reassess as fire or weather conditions change. Establish LCES.
Frontal Assault															Identify thresholds for reassessment. Establish LCES.
No Anchor Points															Find/construct safe, effective anchor before engaging. Establish LCES.
Extreme Conditions (Spotting, Wind)															High potential given because of low live fuel moisture and high probability of ignition. Anticipate. Identify thresholds for reassessment, monitor weather. Establish LCES.
Heavy Equipment															Do not work down slope below heavy equipment. Establish communications with operator. Post lookout for rolling debris. Be aware of loose soil and rock. Establish LCES.
Air Operations Multi Aircraft	X	X													Insure that all personnel are at least 500 feet from bucket or retardant drops. Utilize air attack. Establish LCES.
Hazard Trees/Snags	X	X													Assess, Identify, Communicate, Isolate, Mitigate. Establish LCES.
Hazardous Materials															Utilize the Incident Response Pocket Guide. Identify and isolate any suspected hazardous materials. Notify supervisor and warn others in area. Keep your distance. Establish LCES.
Unburned Area Unknown Fires															High potential for re-burn in brush and corners preheated by earlier burn. Blowdown areas keep a close eye on. Post lookouts. Watch for increase in burn activity. Monitor weather for change in RH and or wind conditions. Establish LCES.
Transportation	X	X													Drive defensively with headlights on, seatbelts fastened. Stay to the right side of the road. Yield to downhill traffic and flaggers. Drive slowly and watch out for the other person. Establish LCES.
Communication															Establish LCES. Insure that communications between lookouts and line resources are maintained. Escape Routes are identified and reevaluated continuously.
Steep Terrain Gravity Hazards	X	X													Do not work crews above or below each other. Post lookouts for rolling material. Watch footing in loose or wet soil and rock. Do not work below heavy equipment. Establish LCES.
Environmental Hazards	X	X													Bees, and other animals are in the area. Carry medical kits for those with allergic reactions, do not harass or instigate any confrontations with animals, warn others of presence.
Structures															Follow page(s) 13-16 of Incident Pocket Response Guide 2014. Establish LCES.
Transfer of Command															Make sure you understand your assignment. Know who your supervisor is and who is working for you. Do not assume. Re-brief all resources.
Span of Control															Adhere to Span of Control Guidelines-5:1. Ensure Overhead is sufficient for operation and identify chain of command. Ensure everyone receives a briefing. Retain control at all times.
Falling Operations	X	X													Post road guards. Have a falling boss who can be in contact with crews working in the area. Use qualified Fallers.
Power Lines															Watch for down power lines and poles. Identify, isolate and report. Notify supervisor and warn others in area. Keep your distance.
I.A. / Staging															Follow the 10 and 18, LCES - before engaging, re-evaluate for each new start!
Public	X	X													Identify, Establish communication with public, Notify Supervisor, Mitigate risk to Public.
Operations Section Chiefs: Eric Perkins			Date / Time: 07/16/18 1800						Safety Officers: Jesse Batsom						Date / Time: 07/16/18 1800

MEDICAL PLAN	1. INCIDENT NAME Silver Creek Fire	2. DATE PREPARED 07/16/18	3. TIME PREPARED 1800	4. OPERATIONAL PERIOD 07/17/18				
5. INCIDENT MEDICAL AID STATIONS								
MEDICAL AID STATIONS		LOCATION		PARAMEDICS				
				YES NO				
Drakes Crossing Fire Department		19364 Powers Creek Loop Rd NE, Silverton, OR 97381		X				
6. TRANSPORTATION								
A. Air Ambulances								
NAME		ADDRESS		PHONE				
				PARAMEDICS				
				YES NO				
Life Flight		Portland		1-800-452-7434				
Air Life		La Grande/Bend		1-800-621-5433				
B. Ground Ambulances								
Santiam Ambulances Service		1401 N. 10 th , Stayton, OR		911/503-769-2175				
7. HOSPITALS								
NAME	ADDRESS	TRAVEL TIME		PHONE	HELIPAD		BURN CENTER	
		AIR	GRND		YES	NO	YES	NO
Santiam Memorial Hospital	1401 N. 10 th , Stayton, OR	10min	20min	503-769-2175	X			X
Providence Portland	3181 Sam Jackson Park Rd. Portland OR	30min	90min	509-525-3320	X			X
Legacy Emmanuel	2801 N. Gantenbein Ave, Portland, OR	30min	90min	503-413-2200	X		X	
8. MEDICAL EMERGENCY PROCEDURES								
<p>1. LINE EMERGENCY: Crew Supervisor to contact Division Supervisor with patient complaint/condition and location.</p> <ul style="list-style-type: none"> • Division Supervisor contacts: <ul style="list-style-type: none"> • Line EMT / PM • Communications Unit • Communication Unit will clear command channel for emergency traffic • Communications Unit contacts: <ul style="list-style-type: none"> • Medical Unit • Safety • Operations • Division Supervisor will run medical emergency on command channel • Medical Unit will: <ol style="list-style-type: none"> 1. Dispatch ground ambulance to nearest drop-point for ground transport only. 2. Or after patient pickup, dispatch ambulance to Helibase for Medical AIR EVAC Flight if needed 3. Notify receiving hospital of injury status. <p>1. CAMP EMERGENCY: Contact Medical Unit with patient complaint/condition and location. Medical Staff will respond to stabilize incident:</p> <ul style="list-style-type: none"> • Medical Unit contacts: <ol style="list-style-type: none"> 1. Communications 2. Safety 3. Logistics 4. Operations 5. Crew Supervisor <p>7. INCIDENT COMMUNICATIONS:</p> <ul style="list-style-type: none"> • Command: Channel High Heaven • Air to Ground: Channel White Net 					<p><u>INJURY REPORTING PROCEDURES</u></p> <p>2. EMERGENCY IC _____</p> <p>IS AN EMT WITH PATIENT: YES ____ NO ____</p> <p>IS A PARAMEDIC WITH PATIENT: YES ____ NO ____</p> <p>3. NATURE OF INJURY _____</p> <p>AGE ____ WEIGHT ____ SEX: MALE ____ FEMALE ____</p> <p>CONSCIOUS? YES ____ NO ____ BREATHING? YES ____ NO ____</p> <p>PATIENT UNIT ID _____</p> <p style="text-align: center; font-size: small;">REMINDER: DO NOT GIVE PT NAME OVER RADIO</p> <p>4. ____ RED-URGENT ____ YELLOW-PRIORITY ____ GREEN-ROUTINE</p> <p>5. TRANSPORTATION REQUESTED BY: AIR ____ GROUND ____</p> <p>6. ADDITIONAL NEEDS _____</p> <p>8. LOCATION OF PATIENT _____</p> <p style="text-align: right; font-size: small;">Division, closest DP</p> <p>POINT OF PICKUP _____</p> <p>LAT _____ LONG _____</p> <p>9. CONTINGENCY _____</p>			
9. PREPARED BY (PLANNING SECTION CHIEF)		10. REVIEWED BY (IC)						
ICS 206 5-17		Kyle Kaupp		Brent O'Nion				

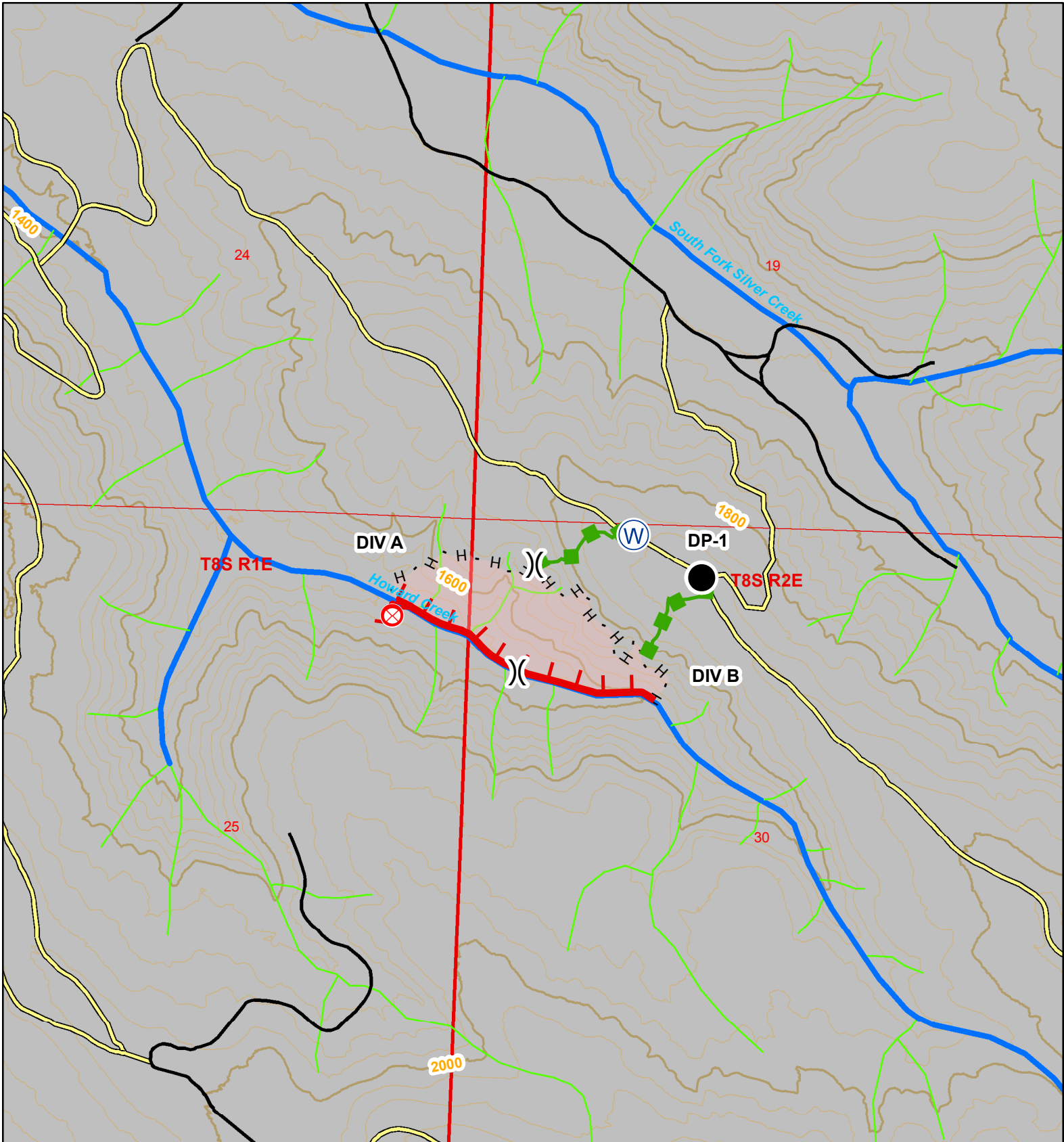
.TUESDAY...

Sky/weather.....Sunny.
CWR.....0 percent.
Chance of pcpn.....0 percent.
LAL.....1.
Max temperature.....84-88.
Min humidity.....25-30 percent.
Wind (20 ft).....
Slope/valley.....Upslope 2 to 6 mph becoming Northwest 5 to 8 mph
with gusts up to 18 mph in the afternoon.
Ridgetop.....Light wind early, becoming West to Northwest
5 to 9 mph with gusts up to 18 mph in the
afternoon.
Mixing height.....Near surface then 3500-4000 ft AGL.
Transport winds.....Light and variable early, increasing West to
Northwest 10 to 15 mph during the afternoon.
Haines Index(High)..5 (moderate).
Haines Index (Mid)..5 (moderate).
Rainfall amount.....0.00 inches.

\$\$

Forecaster...Weagle
Requested by...Kyle Kaupp
Type of request...WILDFIRE
.TAG 1812866.0/PQR
.DELDT 07/15/18
.EMAIL kyle.f.kaupp@oregon.gov

AIR OPERATIONS SUMMARY		1. Incident Name		Helibases					
		Silver Creek Fire		Fixed Wing Bases					
4. Personnel and Communications	Name	Air/Air Frequency	Air/Ground Frequency	5. Remarks (Spec. Instructions, Safety Notes, Hazards, Priorities)					
Air Operations Director				Aircraft available out of Salem if needed					
Air Attack Supervisor			White Net						
Helibase Manager									
Air Tanker Coordinator									
6. Location/Function	7. Assignment	8. Fixed Wing		9. Helicopters		10. Time		11. Aircraft Assigned	12. Operating Base
		No.	Type	No.	Type	Available	Commence		
Silver Creek Helibase - Bucket	A-11			80NH	2	1000			
Silver Creek Helibase - Bucket	A-12			626CK	1	1000			
13. Totals									
14. Air Operations Support Equipment				15. Prepared by (include Date and Time)		7/16/18		1800	
				Kyle Kaupp					



Legend

- | | | | |
|----------------|------------------------|-------------------|-----------------------|
| Port-a-Tank | Escape Route | Highways | Streams |
| Drop Point | Uncontrolled Fire Edge | Route Type | Fish Presence |
| Division Break | Completed Handline | Interstate | Fish |
| Fire Origin | Fire Polygon | US Highway | Nonfish |
| | | State Highway | Unknown |
| | | Roads | 40 ft Contours |
| | | Trails | Contour Type |
| | | | Index |
| | | | Intermediate |

IAP Map - 07/17/18

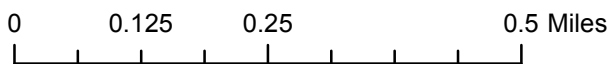
Approximate Acres: 27

**Silver Creek Fire
Fire # 582008**



Date: 07/16/2018
Created By: Kyle Kaupp @ 1900

1 inch = 1,000 feet



Projection: NAD 83
Oregon Statewide Lambert Intl.