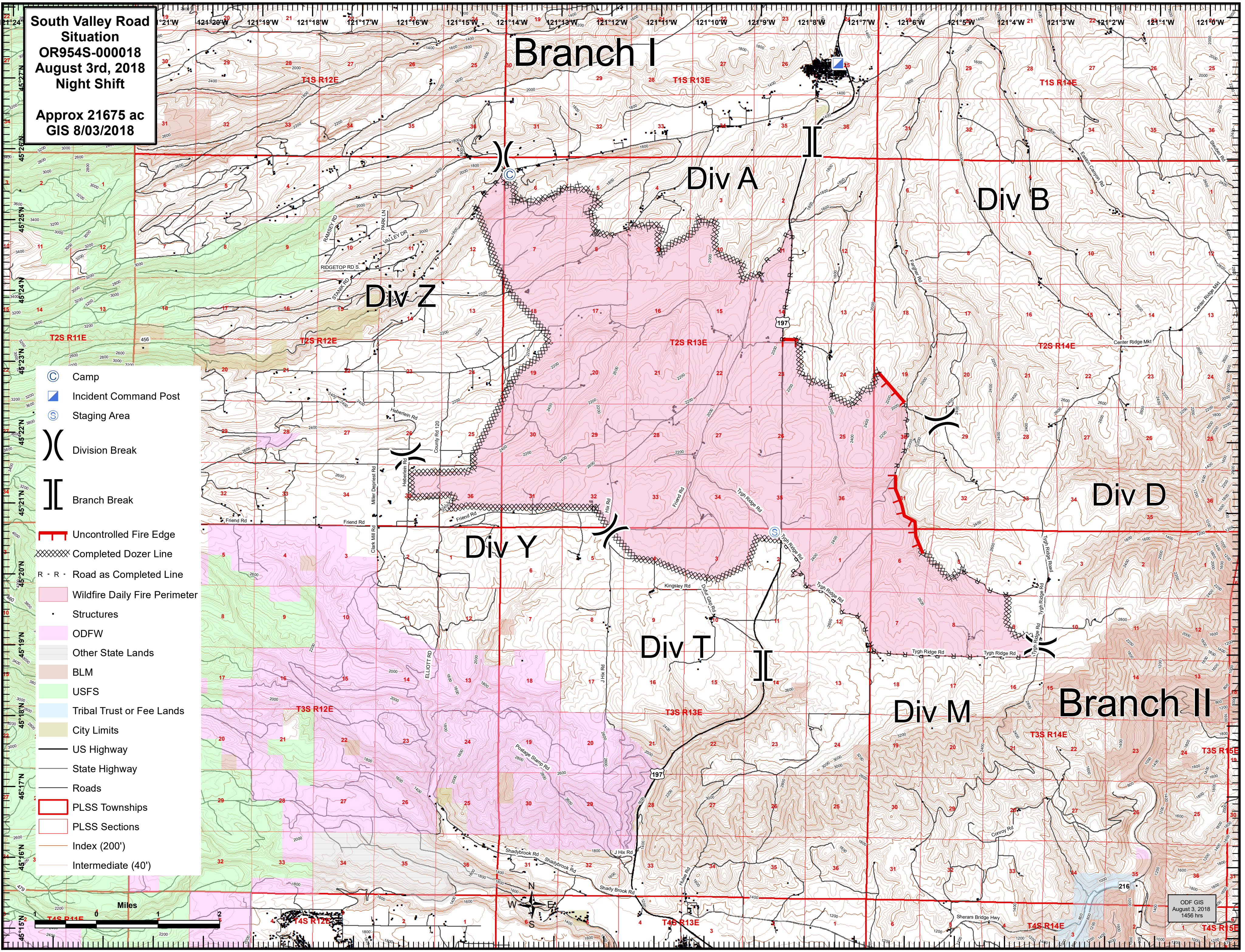


**South Valley Road  
Situation  
OR954S-00018  
August 3rd, 2018  
Night Shift**

**Approx 21675 ac  
GIS 8/03/2018**

# Branch I



- Camp
- Incident Command Post
- Staging Area
- Division Break
- Branch Break
- Uncontrolled Fire Edge
- Completed Dozer Line
- Road as Completed Line
- Wildfire Daily Fire Perimeter
- Structures
- ODFW
- Other State Lands
- BLM
- USFS
- Tribal Trust or Fee Lands
- City Limits
- US Highway
- State Highway
- Roads
- PLSS Townships
- PLSS Sections
- Index (200')
- Intermediate (40')