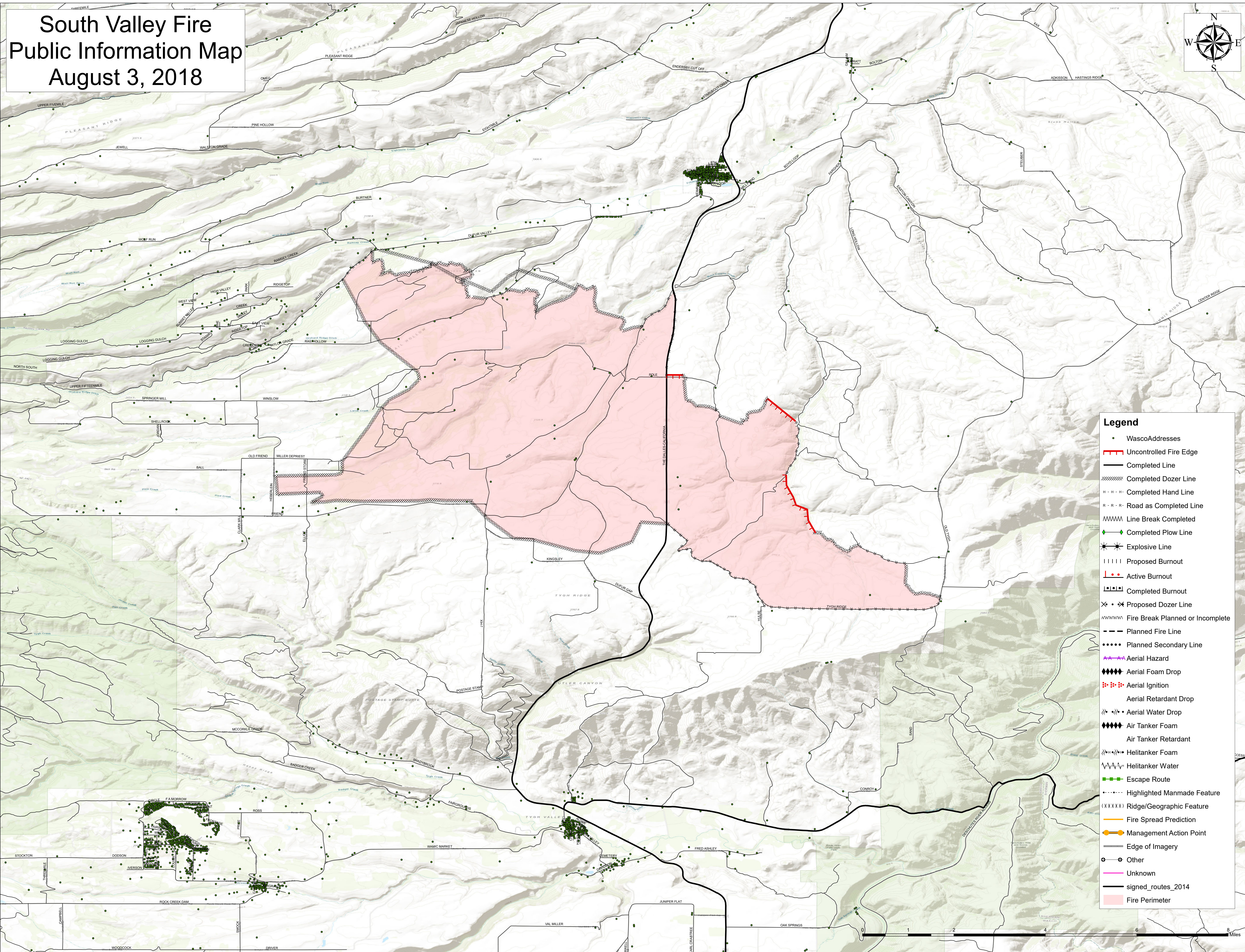
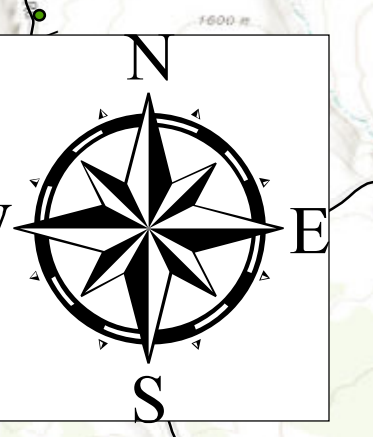


South Valley Fire Public Information Map August 3, 2018



Legend

- WascoAddresses
- Uncontrolled Fire Edge
- Completed Line
- Completed Dozer Line
- Completed Hand Line
- Road as Completed Line
- Line Break Completed
- Completed Plow Line
- Explosive Line
- Proposed Burnout
- Active Burnout
- Completed Burnout
- Proposed Dozer Line
- Fire Break Planned or Incomplete
- Planned Fire Line
- Planned Secondary Line
- Aerial Hazard
- Aerial Foam Drop
- Aerial Ignition
- Aerial Retardant Drop
- Aerial Water Drop
- Air Tanker Foam
- Air Tanker Retardant
- Helitanker Foam
- Helitanker Water
- Escape Route
- Highlighted Manmade Feature
- Ridge/Geographic Feature
- Fire Spread Prediction
- Management Action Point
- Edge of Imagery
- Other
- Unknown
- signed_routes_2014
- Fire Perimeter

Sources: Esri, HERE, Garmin, Intermap, increment P Corp., GEBCO, USGS, FAO, NPS, NRCAN, Geobase, IGN, Kadaster NL, Ordnance Survey, Esri Japan, METI, Esri China (Hong Kong), Swisstopo, © OpenStreetMap contributors, and the GIS User Community