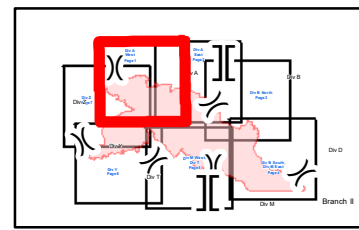
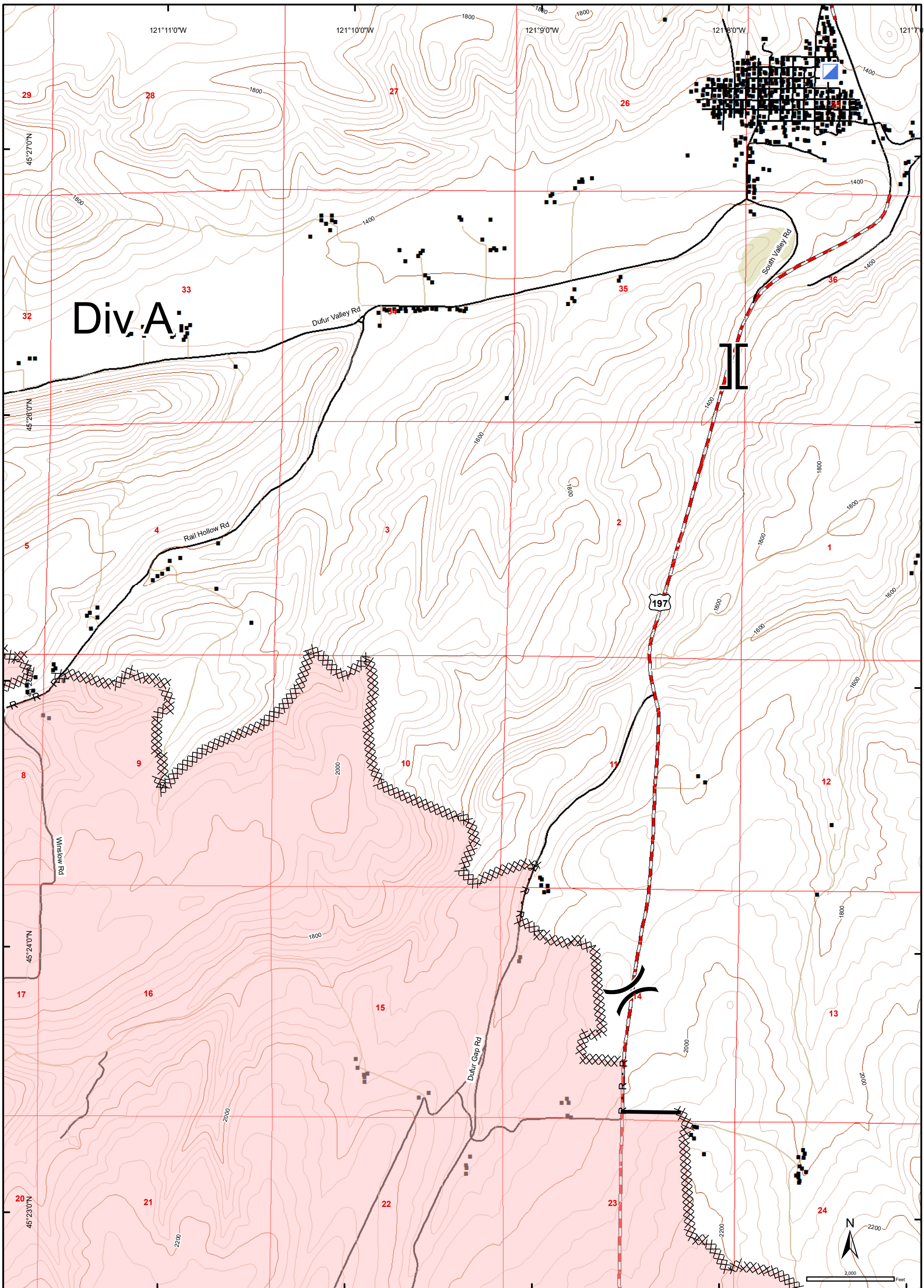


South Valley Road
 OR954S-000018
 Branch I
Div A West
 Night Shift
 6 August 2018
 20026 ac
 GIS 08/05/2018

ODF GIS
 August 6, 2018
 @ 1120 hrs

- | | | | |
|--|------------------------------|--|--------------------|
| | Camp | | Structures |
| | Drop Point | | Index (200') |
| | Water Source | | Intermediate (40') |
| | Completed Line | | Paved Road |
| | Completed Dozer Line | | Dirt Road |
| | R - R Road as Completed Line | | PLSS Sections |
| | Fire Perimeter | | |

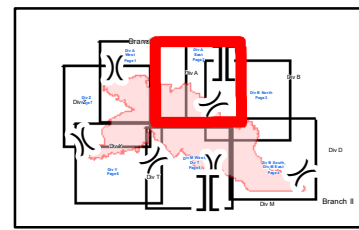


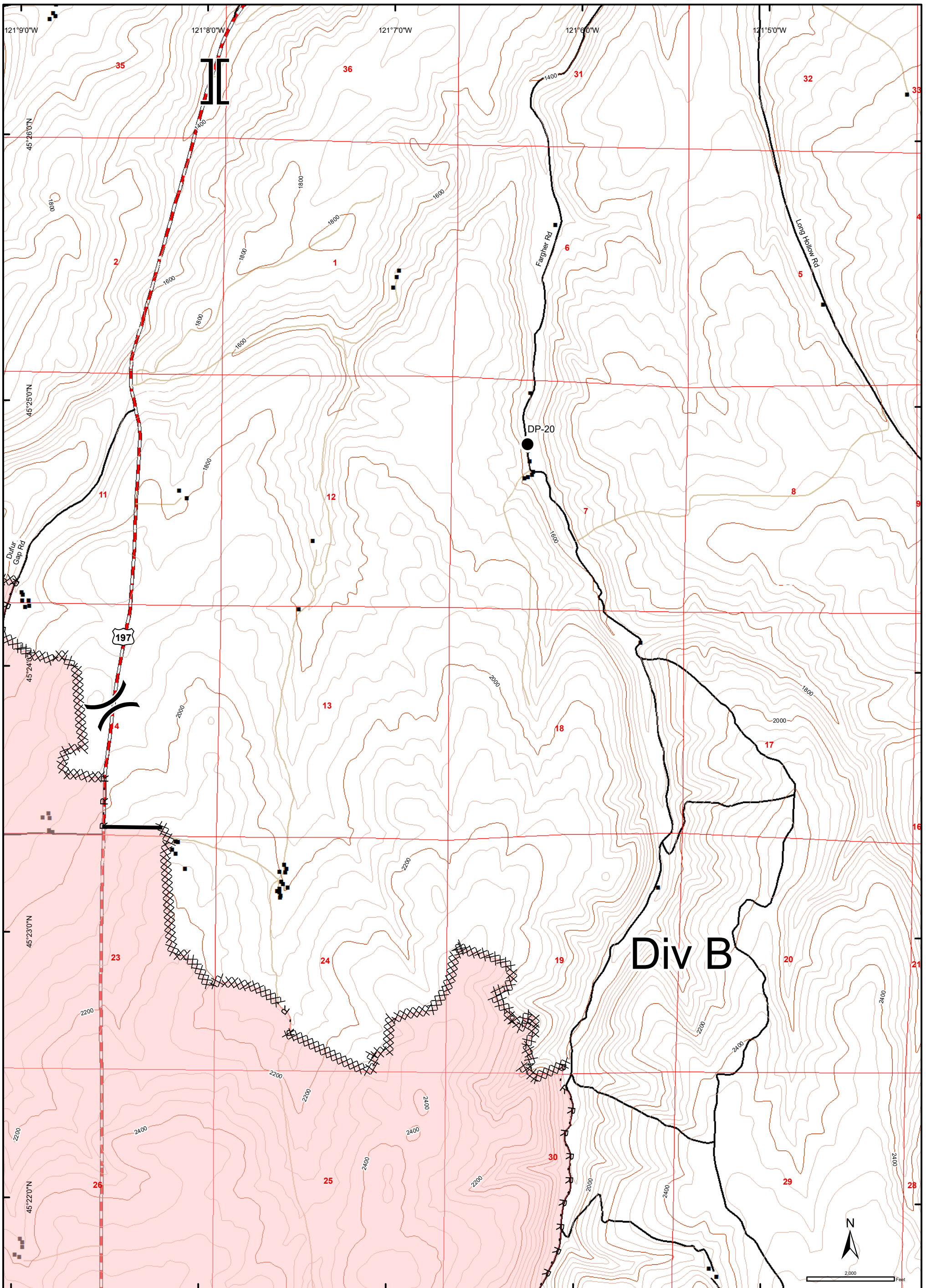


South Valley Road
 OR954S-000018
 Branch I
Div A East
 Night Shift
 6 August 2018
 20026 ac
 GIS 08/05/2018

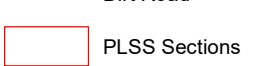
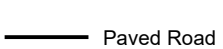
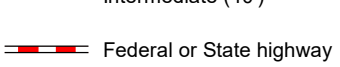
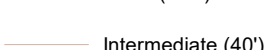
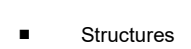
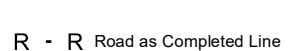
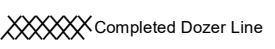
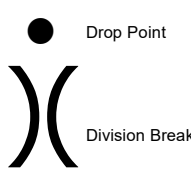
ODF GIS
 August 6, 2018
 @ 1121 hrs

- | | | |
|------------------------------|----------------------------|------------------|
| ● Drop Point | ■ Structures | Local Government |
| ▣ Incident Command Post | — Index (200') | |
| ⌋ Branch Break | — Intermediate (40') | |
| ⌋ Division Break | — Federal or State highway | |
| — Completed Line | — Paved Road | |
| XXXXX Completed Dozer Line | — Dirt Road | |
| R - R Road as Completed Line | ▭ PLSS Sections | |
| ▭ Fire Perimeter | | |

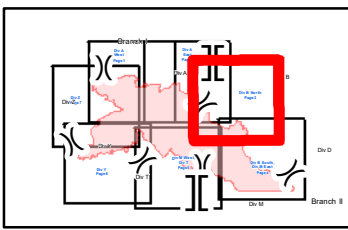


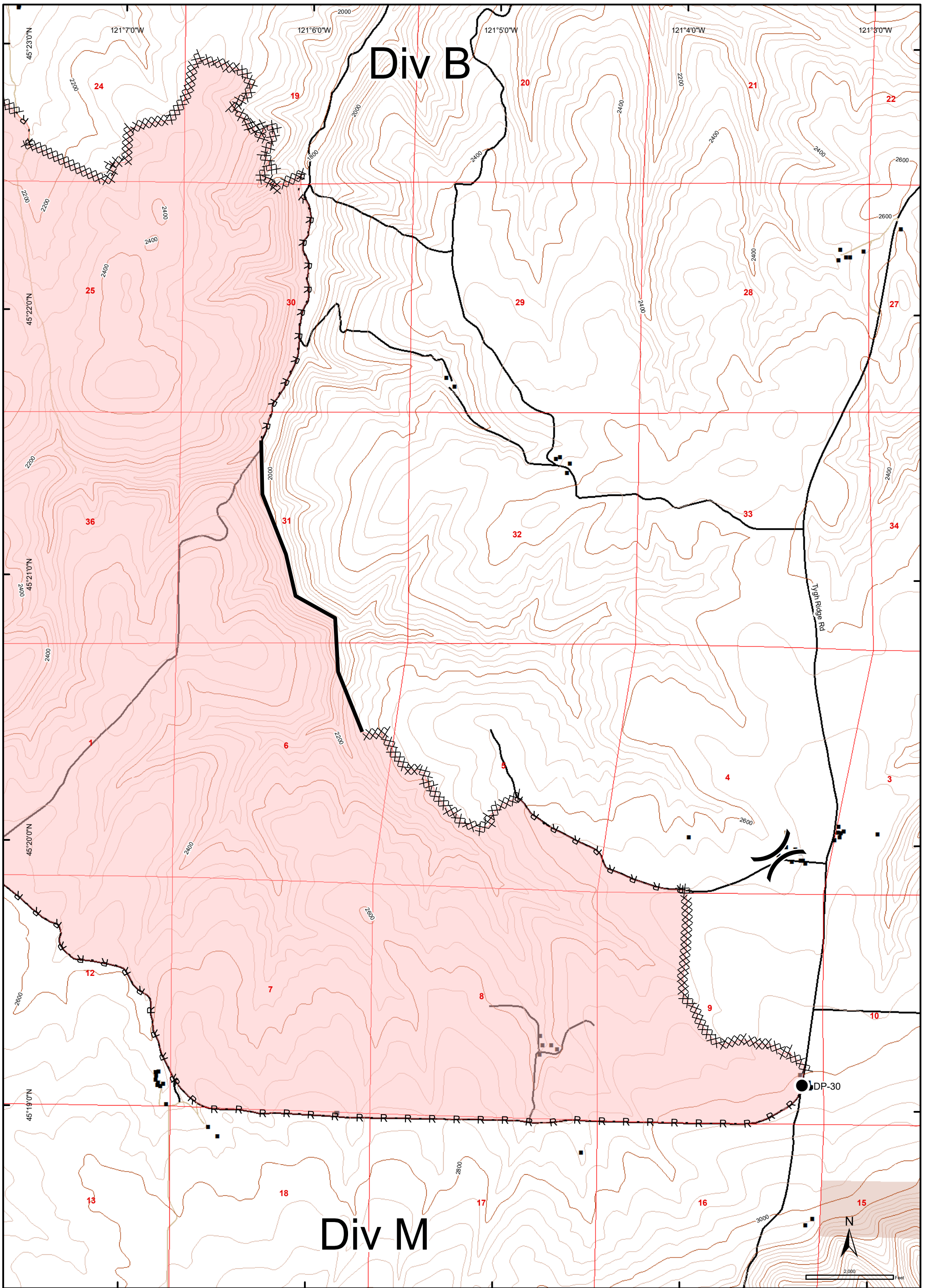


South Valley Road
 OR954S-000018
 Branch II
Div B North
 Night Shift
 6 August 2018
 20026 ac
 GIS 08/05/2018



ODF GIS
 August 6, 2018
 @ 1121 hrs

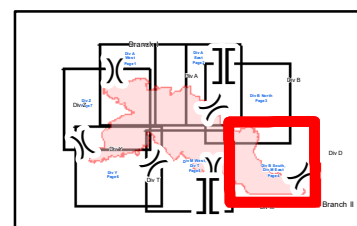


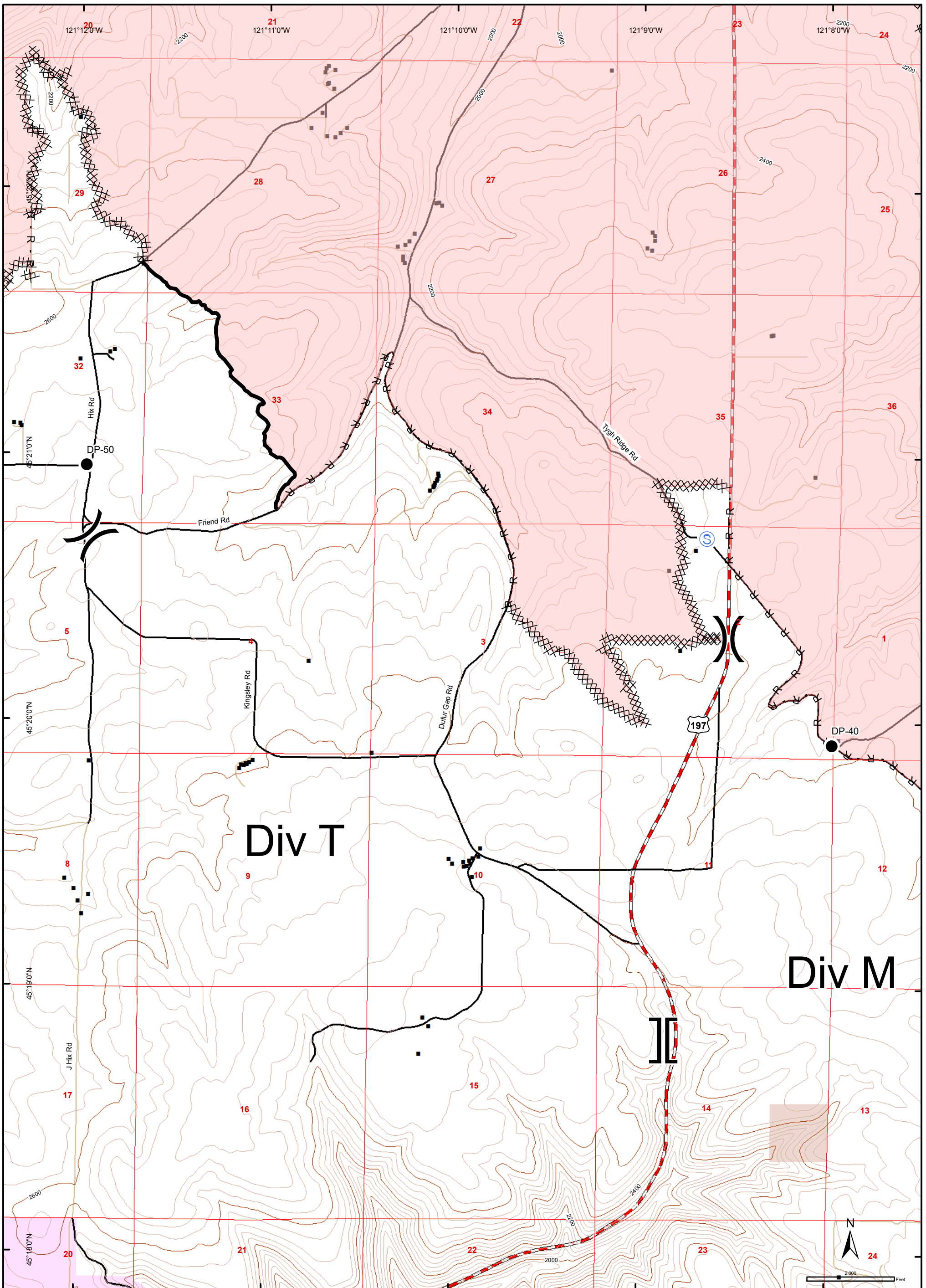


South Valley Road
 OR954S-000018
 Branch II
Div B South, Div M East
 Night Shift
 6 August 2018
 20026 ac
 GIS 08/05/2018

ODF GIS
 August 6, 2018
 @ 1121 hrs

- Drop Point
- ⌋ Division Break
- Structures
- BLM
- Index (200')
- Intermediate (40')
- Completed Line
- Paved Road
- Dirt Road
- XXXXX Completed Dozer Line
- R - R Road as Completed Line
- PLSS Sections
- Fire Perimeter

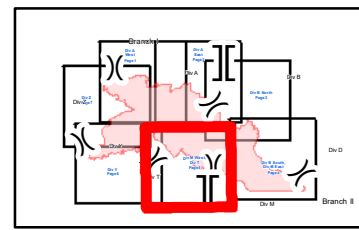


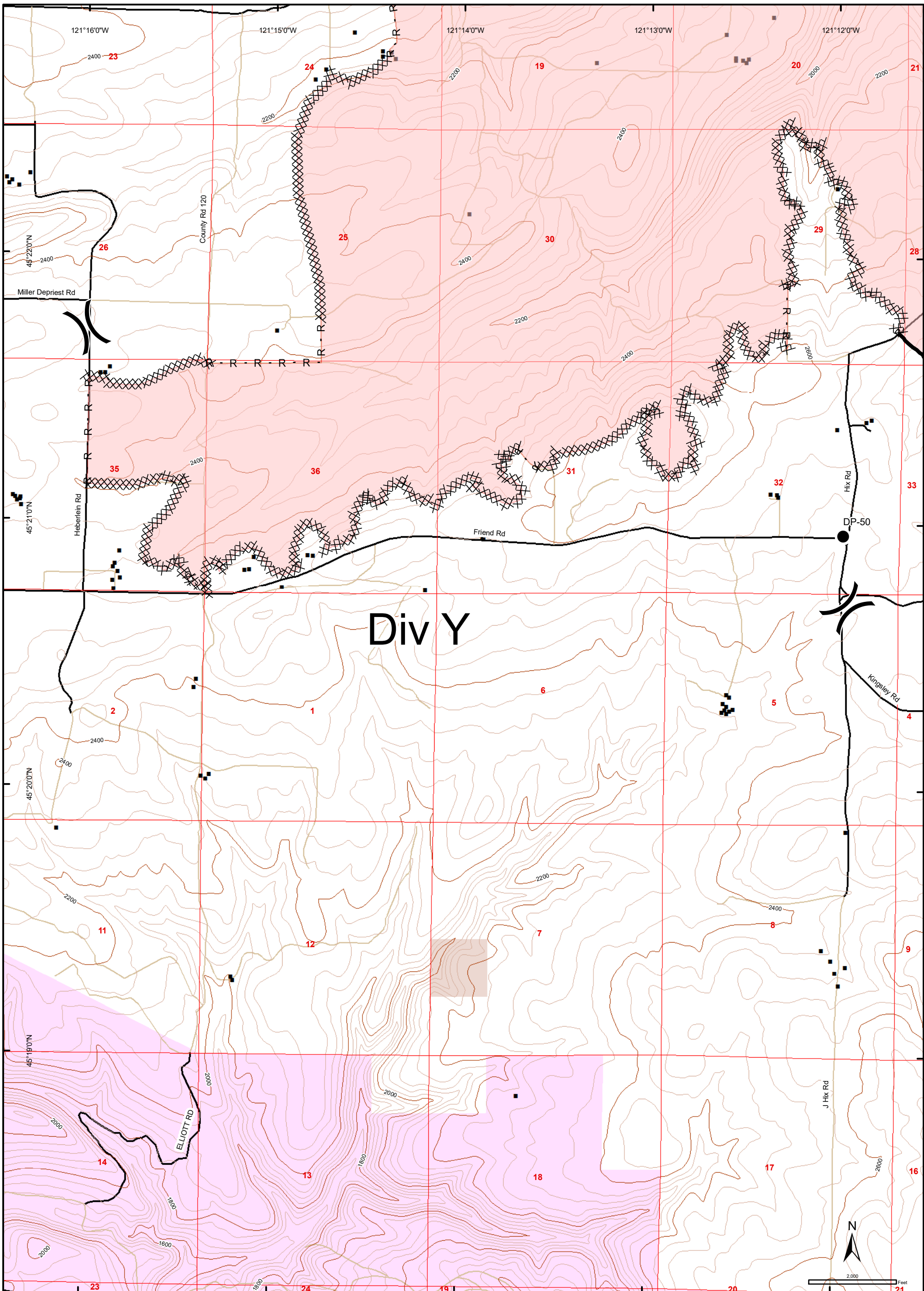


South Valley Road
 OR954S-000018
 Branch I
 Div M West, Div T
 Night Shift
 6 August 2018
 20026 ac
 GIS 08/05/2018

ODF GIS
 August 6, 2018
 @ 1121 hrs

- Drop Point
- Ⓢ Staging Area
-) Division Break
- || Branch Break
- Completed Line
- XXXXX Completed Dozer Line
- R - R Road as Completed Line
- Structures
- Index (200')
- Intermediate (40')
- Federal or State highway
- Paved Road
- Dirt Road
- ODFW
- BLM
- Fire Perimeter
- PLSS Sections



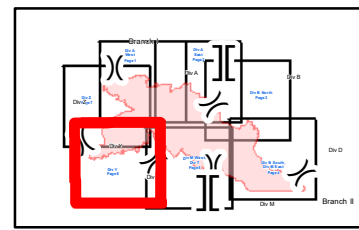


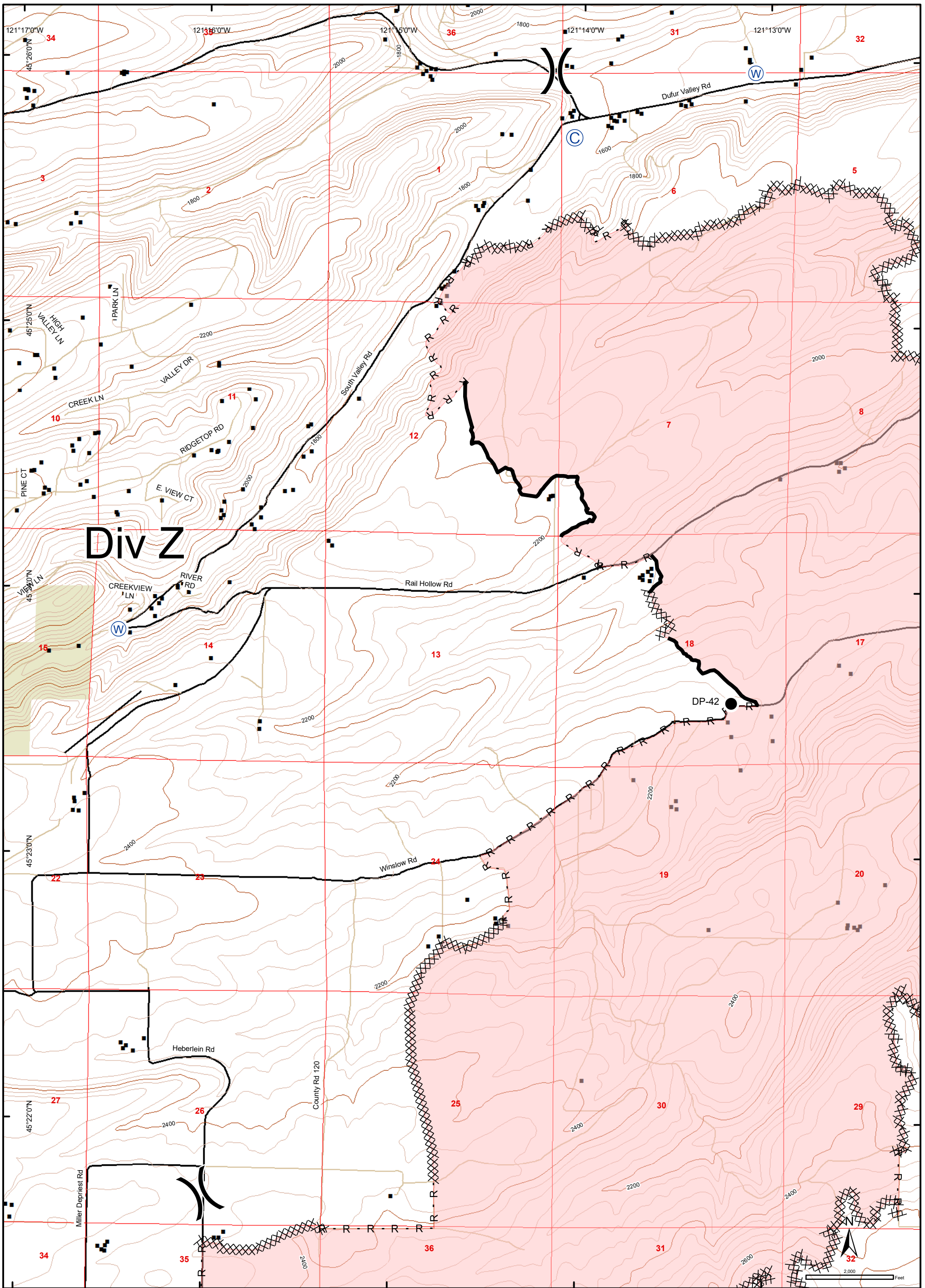
South Valley Road
 OR954S-000018
 Branch I
 Div Y
 Night Shift
 6 August 2018
 20026 ac
 GIS 08/05/2018

ODF GIS
 August 6, 2018
 @ 1121 hrs

- Drop Point
-)) Division Break
- Completed Line
- XXXXX Completed Dozer Line
- R - R Road as Completed Line
- Structures
- Index (200')
- Intermediate (40')
- Paved Road
- Dirt Road
- PLSS Sections
- Fire Perimeter

- ODFW
- BLM





South Valley Road
 OR954S-000018
 Branch I
Div Z
 Night Shift
 6 August 2018
 20026 ac
 GIS 08/05/2018

ODF GIS
 August 6, 2018
 @ 1121 hrs

- | | | | | | | | |
|--|--------------|--|------------------------------|--|--------------------|--|------------------|
| | Camp | | Division Break | | Structures | | Local Government |
| | Drop Point | | Completed Line | | Index (200') | | |
| | Water Source | | Completed Dozer Line | | Intermediate (40') | | |
| | | | R - R Road as Completed Line | | Paved Road | | |
| | | | Fire Perimeter | | Dirt Road | | |
| | | | | | PLSS Sections | | |

