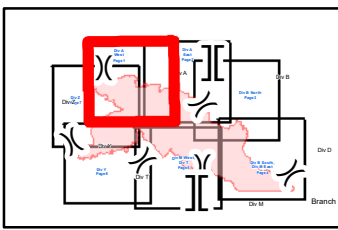
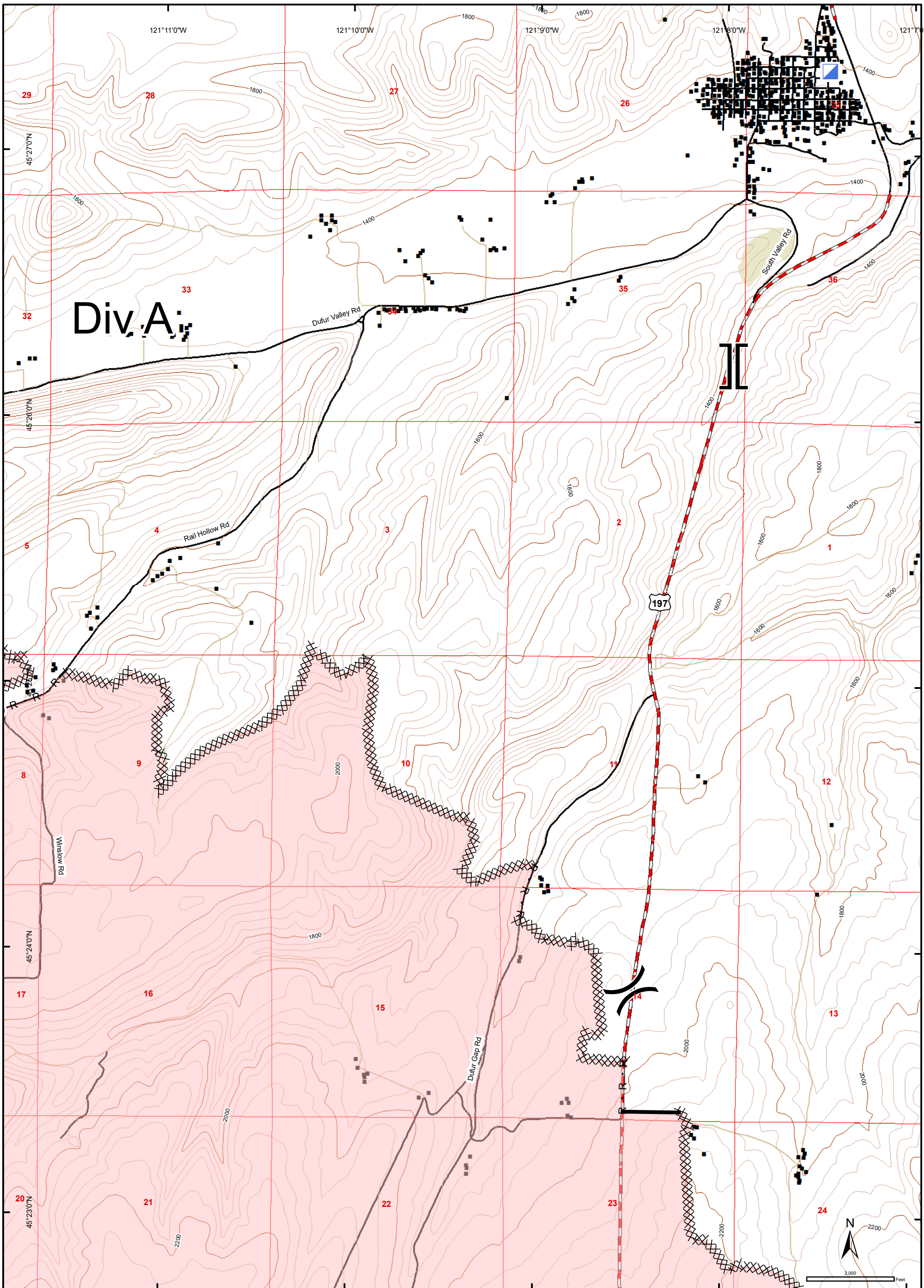


South Valley Road  
 OR954S-000018  
 Branch I  
 Div A West  
 7 August 2018  
 20026 ac  
 GIS 08/05/2018

- |  |              |  |                              |  |                    |
|--|--------------|--|------------------------------|--|--------------------|
|  | Camp         |  | Division Break               |  | Structures         |
|  | Drop Point   |  | Index (200')                 |  | Intermediate (40') |
|  | Water Source |  | Completed Line               |  | Paved Road         |
|  |              |  | Completed Dozer Line         |  | Dirt Road          |
|  |              |  | R - R Road as Completed Line |  | PLSS Sections      |
|  |              |  | Fire Perimeter               |  |                    |

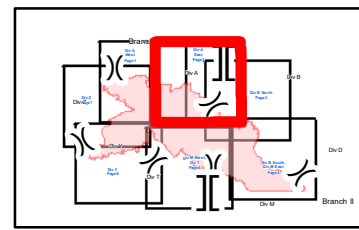




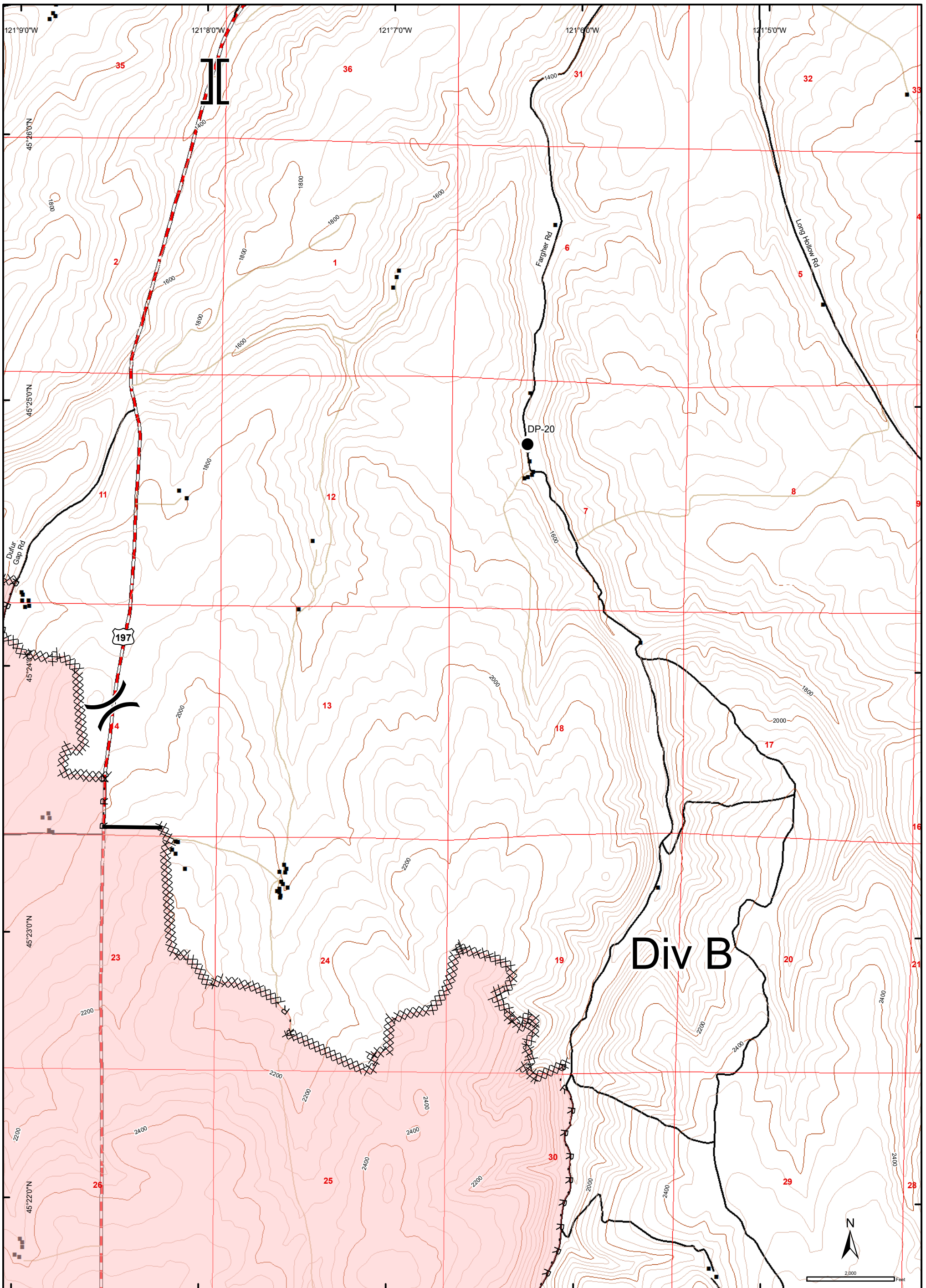


South Valley Road  
 OR954S-000018  
 Branch I  
 Div A East  
 7 August 2018  
 20026 ac  
 GIS 08/05/2018


- Drop Point
- Incident Command Post
- Division Break
- Branch Break
- Completed Line
- Completed Dozer Line
- R - R Road as Completed Line
- Fire Perimeter
- Structures
- Index (200')
- Intermediate (40')
- Federal or State highway
- Paved Road
- Dirt Road
- PLSS Sections
- Local Government

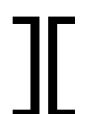








South Valley Road  
 OR954S-000018  
 Branch II  
 Div B North  
 7 August 2018  
 20026 ac  
 GIS 08/05/2018

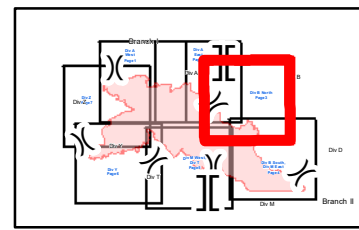
● Drop Point  
 Division Break

 Branch Break

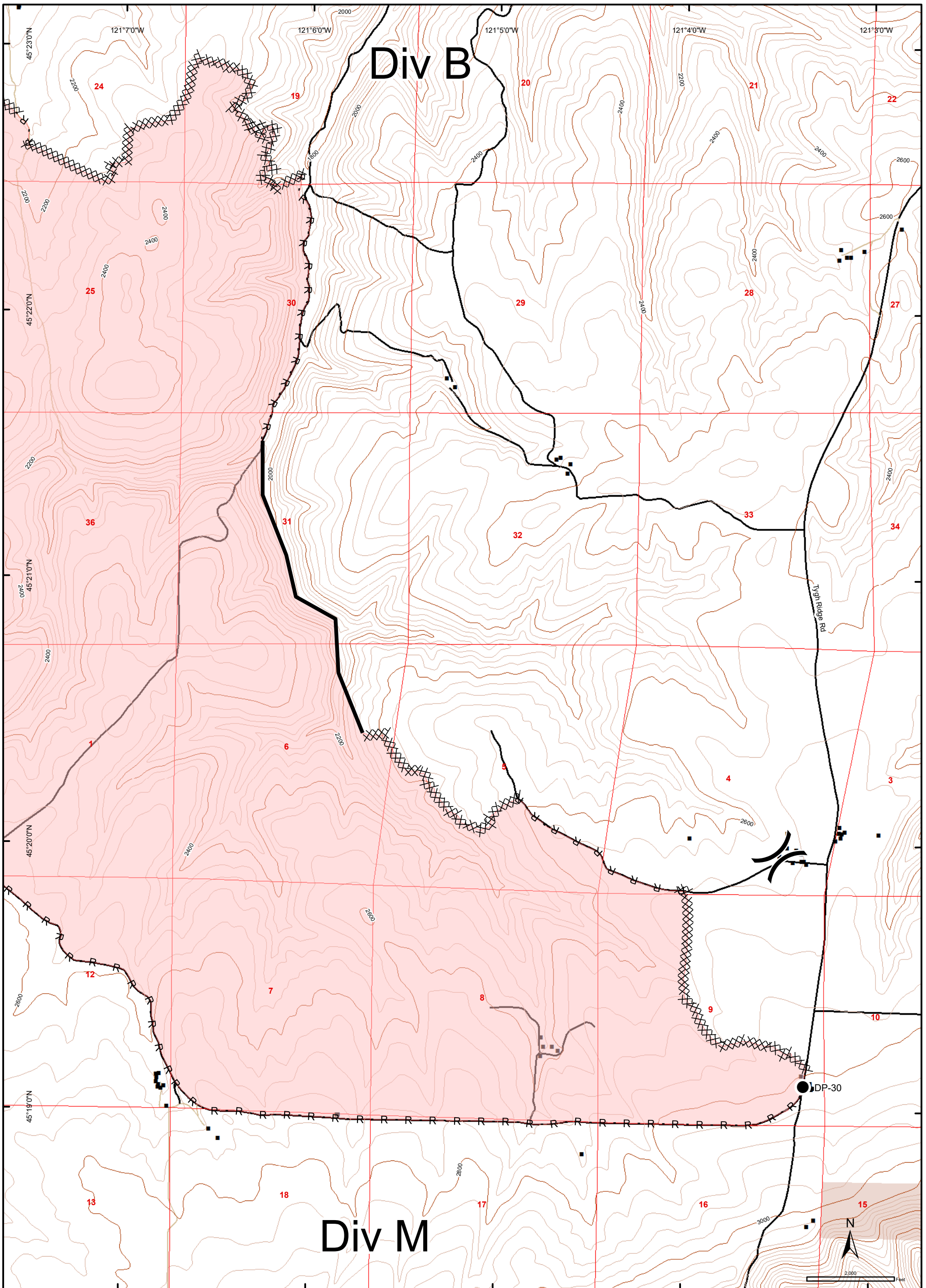
— Completed Line  
 XXXXX Completed Dozer Line  
 R - R Road as Completed Line

 Fire Perimeter

■ Structures  
 — Index (200')  
 — Intermediate (40')  
 Federal or State highway  
 — Paved Road  
 — Dirt Road  
 PLSS Sections

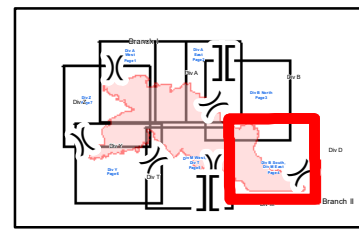


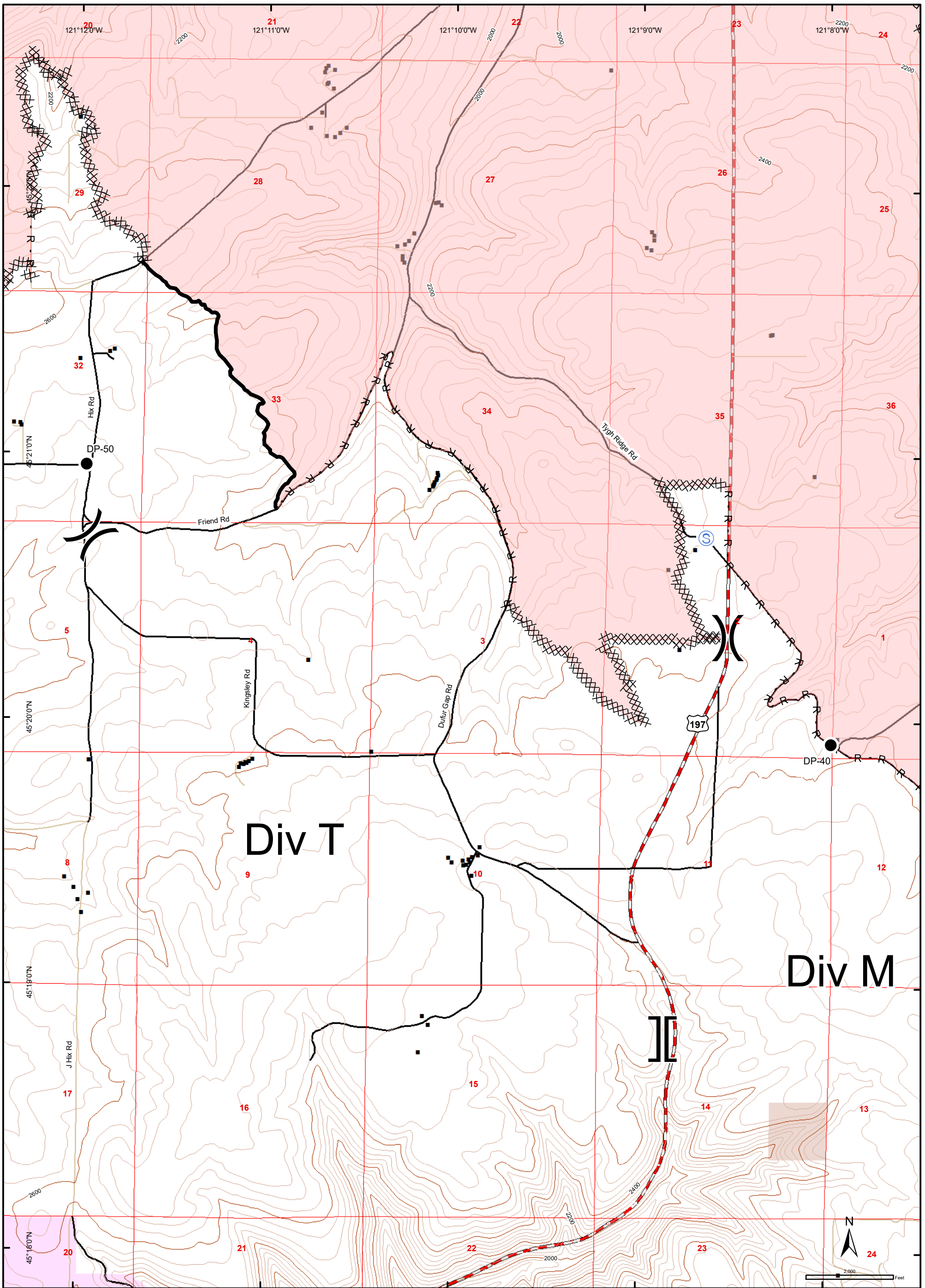




South Valley Road  
 OR954S-000018  
 Branch II  
 Div B South, Div M East  
 7 August 2018  
 20026 ac  
 GIS 08/05/2018

- Drop Point
- ⌋ Division Break
- Structures
- BLM
- Index (200')
- Intermediate (40')
- Completed Line
- Paved Road
- XXXXX Completed Dozer Line
- Dirt Road
- R - R Road as Completed Line
- PLSS Sections
- Fire Perimeter

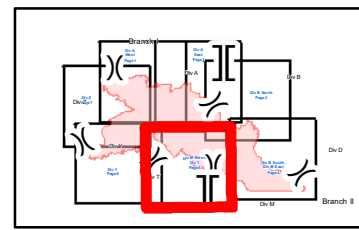




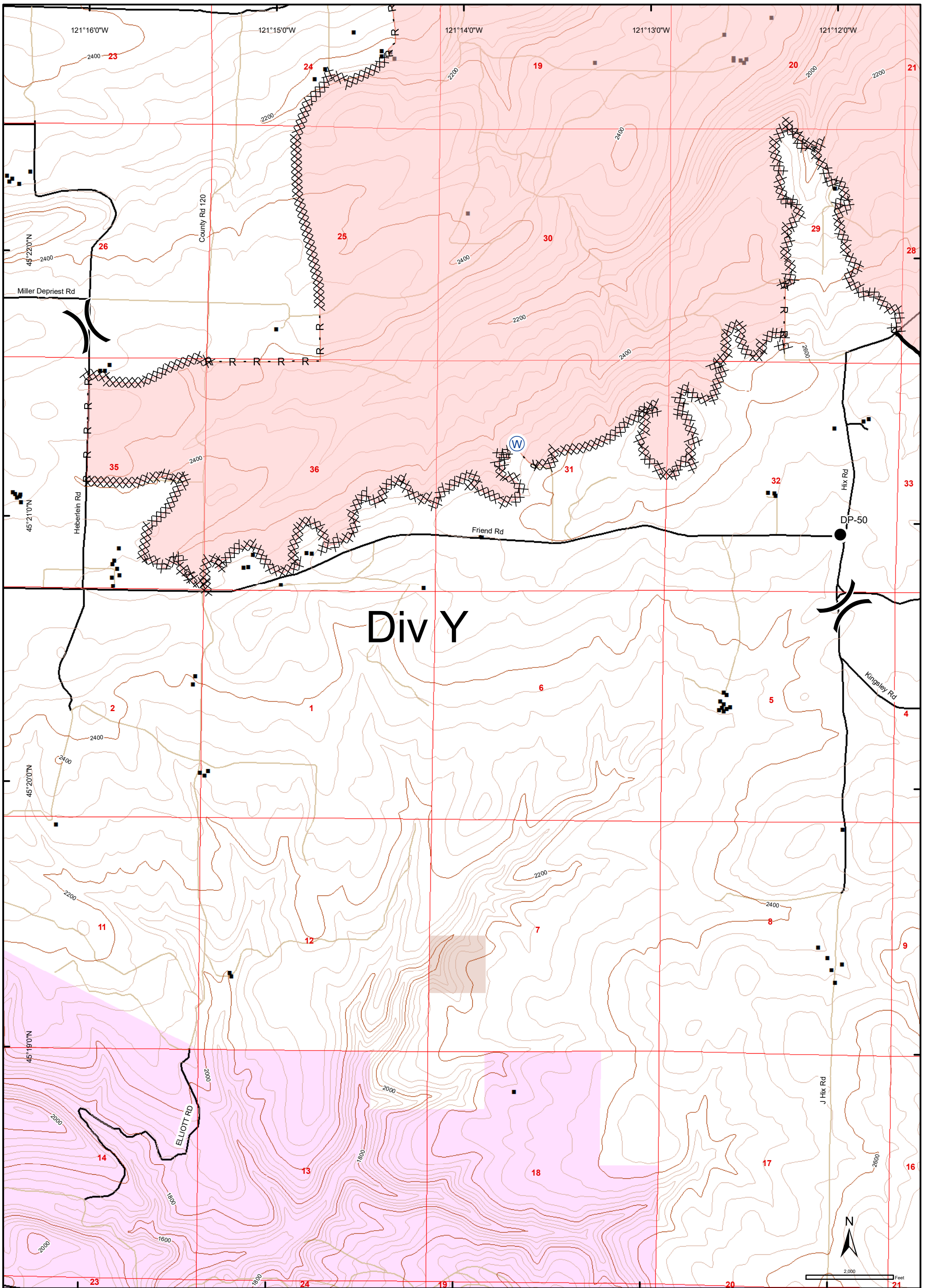
South Valley Road  
 OR954S-000018  
 Branch I  
 Div M West, Div T  
 7 August 2018  
 20026 ac  
 GIS 08/05/2018

ODF GIS  
 August 6, 2018  
 @ 1934 hrs

- |                              |                            |        |
|------------------------------|----------------------------|--------|
| ● Drop Point                 | ▣ Structures               | ▭ ODFW |
| Ⓢ Staging Area               | — Index (200')             | ▭ BLM  |
| ⌋ Branch Break               | — Intermediate (40')       |        |
| ⌋ Division Break             | — Completed Line           |        |
| XXXXX Completed Dozer Line   | — Federal or State highway |        |
| R - R Road as Completed Line | — Paved Road               |        |
| ▭ Fire Perimeter             | — Dirt Road                |        |
|                              | ▭ PLSS Sections            |        |





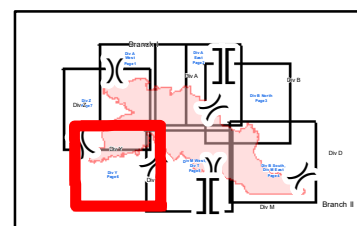


South Valley Road  
 OR954S-000018  
 Branch I  
 Div Y  
 7 August 2018  
 20026 ac  
 GIS 08/05/2018

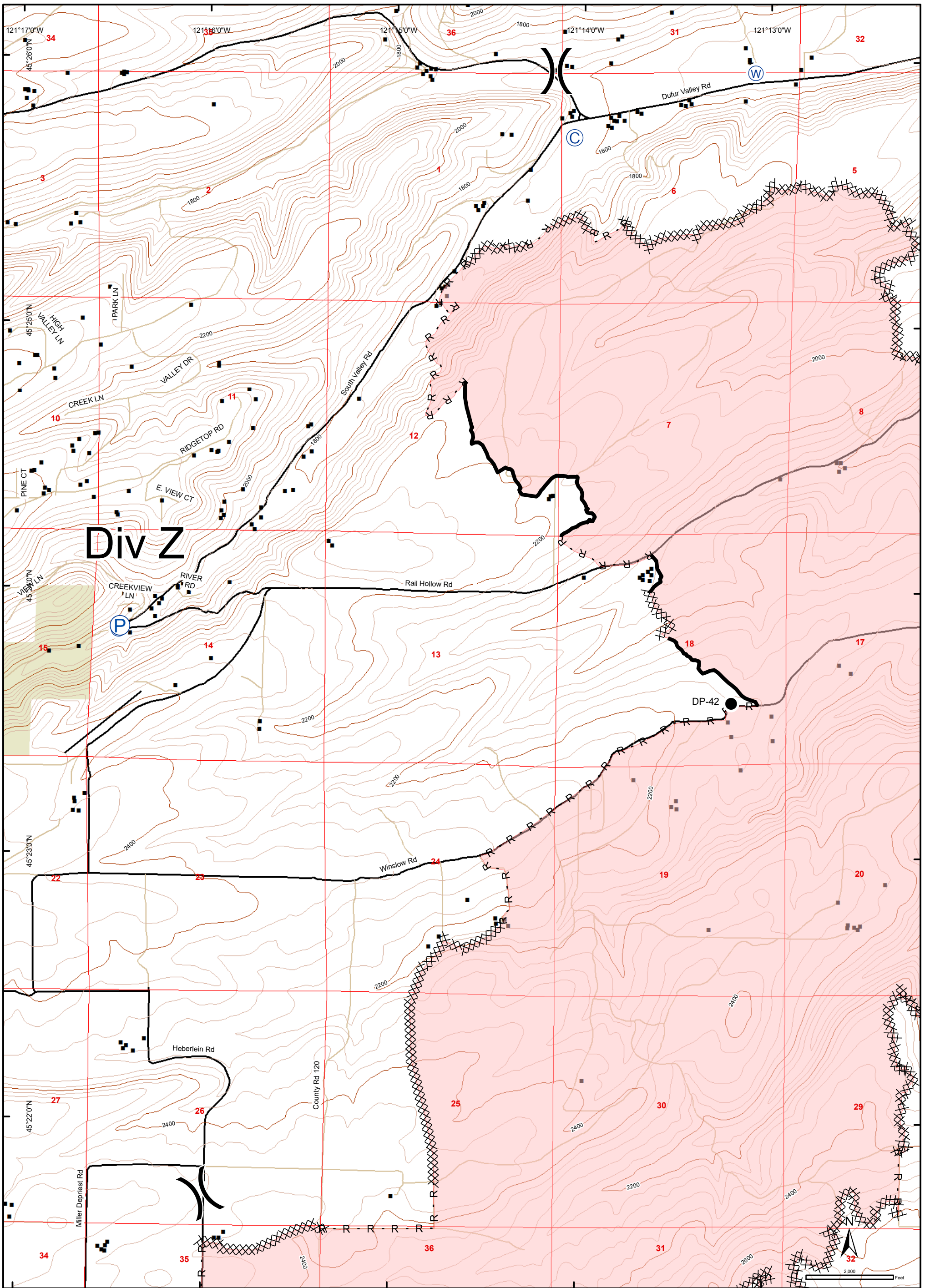
- Drop Point
- ⊕ Water Source
- ⌋ Division Break
- Completed Line
- XXXXX Completed Dozer Line
- R - R Road as Completed Line
- Structures
- Index (200')
- Intermediate (40')
- Paved Road
- Dirt Road
- PLSS Sections
- Fire Perimeter

- ODFW
- BLM

ODF GIS  
 August 6, 2018  
 @ 1934 hrs







**South Valley Road**  
 OR954S-000018  
 Branch I  
**Div Z**  
 7 August 2018  
 20026 ac  
 GIS 08/05/2018

ODF GIS  
 August 6, 2018  
 @ 1934 hrs

- |  |              |  |                              |  |                    |  |                  |
|--|--------------|--|------------------------------|--|--------------------|--|------------------|
|  | Camp         |  | Division Break               |  | Structures         |  | Local Government |
|  | Drop Point   |  | Completed Line               |  | Index (200')       |  |                  |
|  | Pump         |  | Completed Dozer Line         |  | Intermediate (40') |  |                  |
|  | Water Source |  | R - R Road as Completed Line |  | Paved Road         |  |                  |
|  |              |  | Fire Perimeter               |  | Dirt Road          |  |                  |
|  |              |  |                              |  | PLSS Sections      |  |                  |

