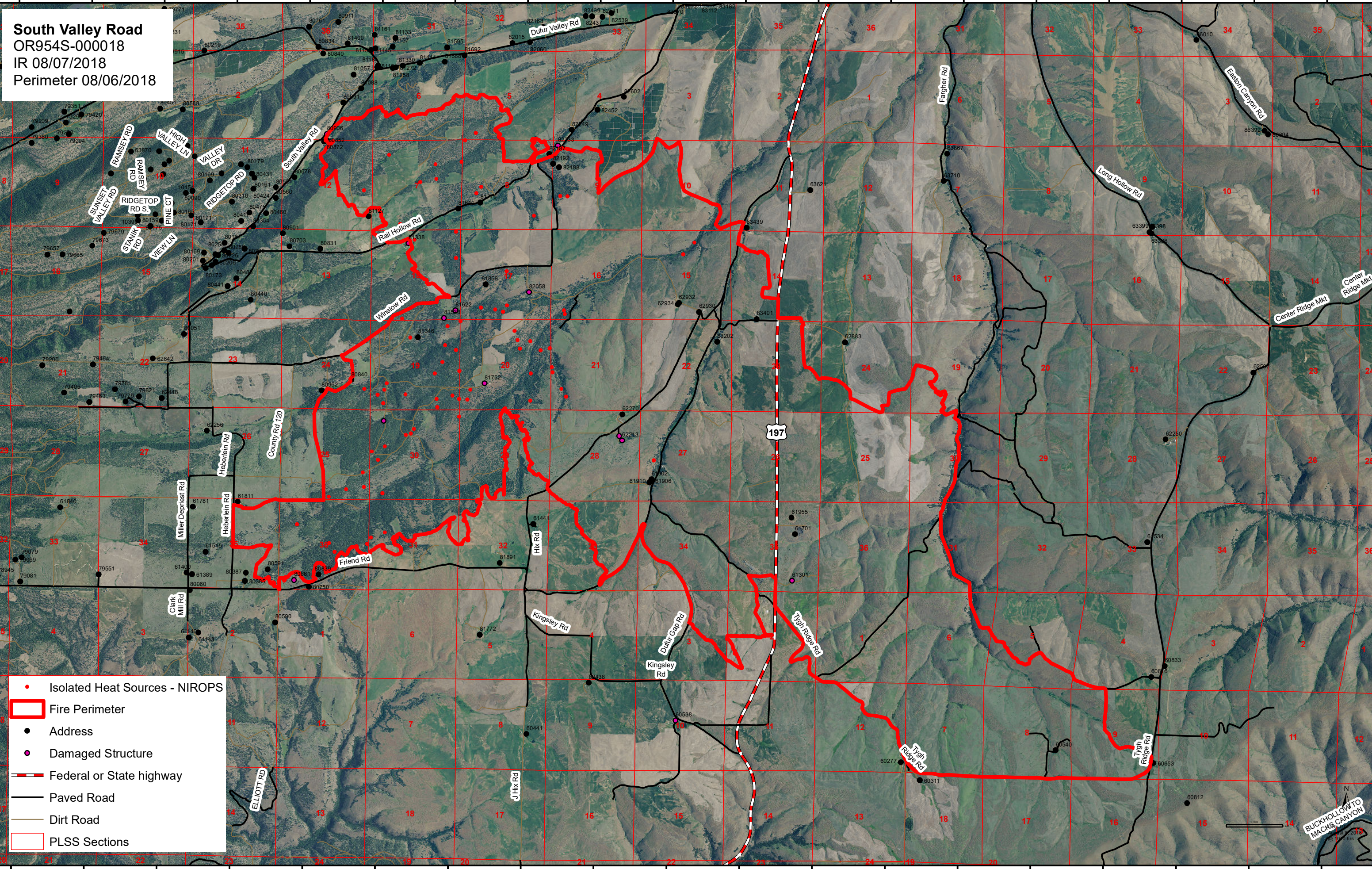


121°19'0"W 121°18'0"W 121°17'0"W 121°16'0"W 121°15'0"W 121°14'0"W 121°13'0"W 121°12'0"W 121°11'0"W 121°10'0"W 121°9'0"W 121°8'0"W 121°7'0"W 121°6'0"W 121°5'0"W 121°4'0"W 121°3'0"W 121°2'0"W 121°1'0"W

South Valley Road
OR954S-000018
IR 08/07/2018
Perimeter 08/06/2018



- Isolated Heat Sources - NIROPS
- Fire Perimeter
- Address
- Damaged Structure
- Federal or State highway
- Paved Road
- Dirt Road
- PLSS Sections

BUCKHOLLOW TO
MACKS CANYON

121°19'0"W 121°18'0"W 121°17'0"W 121°16'0"W 121°15'0"W 121°14'0"W 121°13'0"W 121°12'0"W 121°11'0"W 121°10'0"W 121°9'0"W 121°8'0"W 121°7'0"W 121°6'0"W 121°5'0"W 121°4'0"W 121°3'0"W 121°2'0"W 121°1'0"W