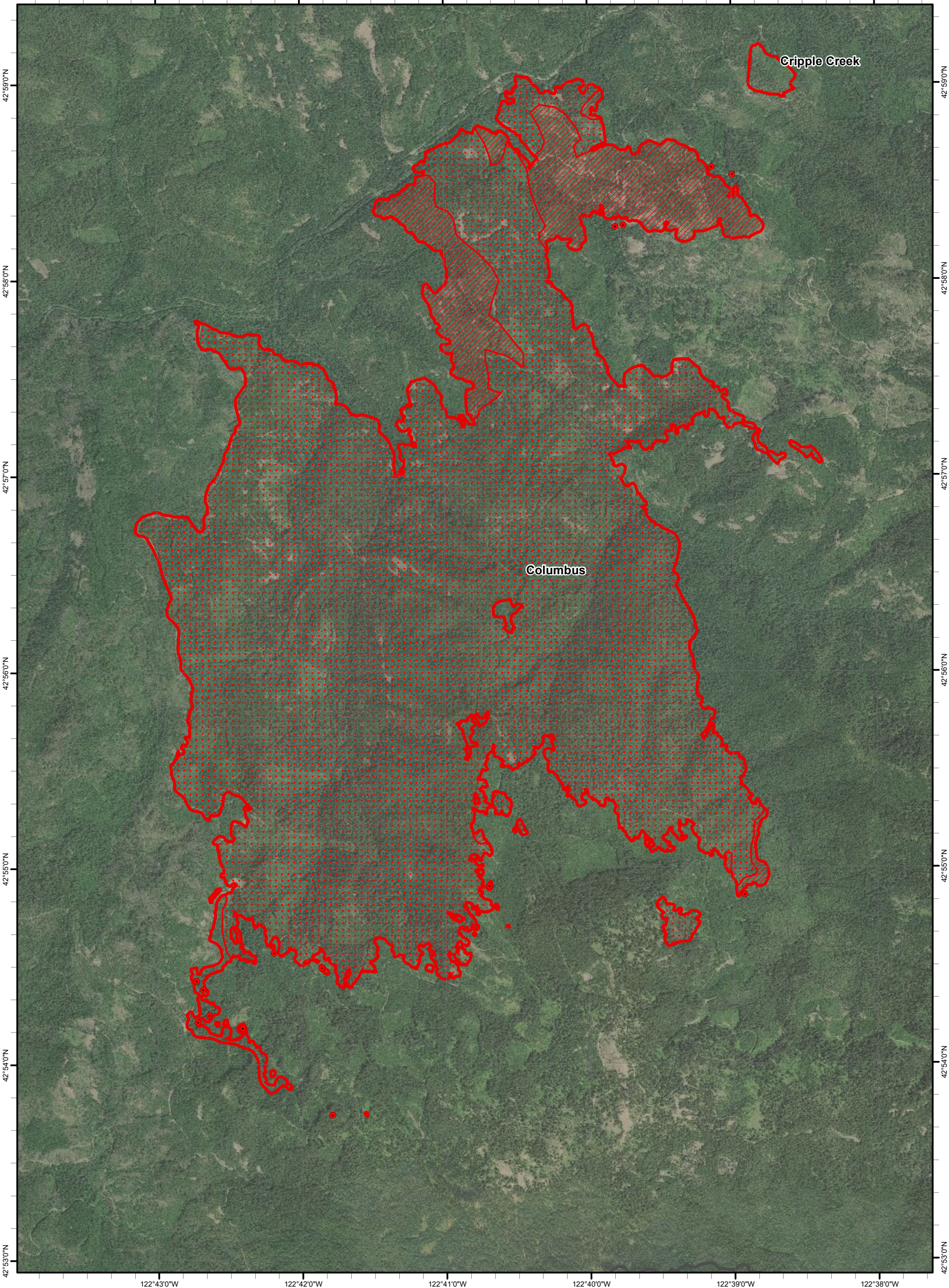


122°43'0"W 122°42'0"W 122°41'0"W 122°40'0"W 122°39'0"W 122°38'0"W








South Umpqua Complex
 OR-UPF-000246
 Infrared Heat Sources
Columbus and Cripple Creek

8/02/2018 0150 hrs
 18,670 Interpreted Acres Total



Print Date: 8/02/2018
 IRIN: Zack Muirbrook

-  Isolated Heat Sources
-  Scattered Heat
-  Intense Heat
-  Heat Perimeter
-  Sugar Pine Fires

