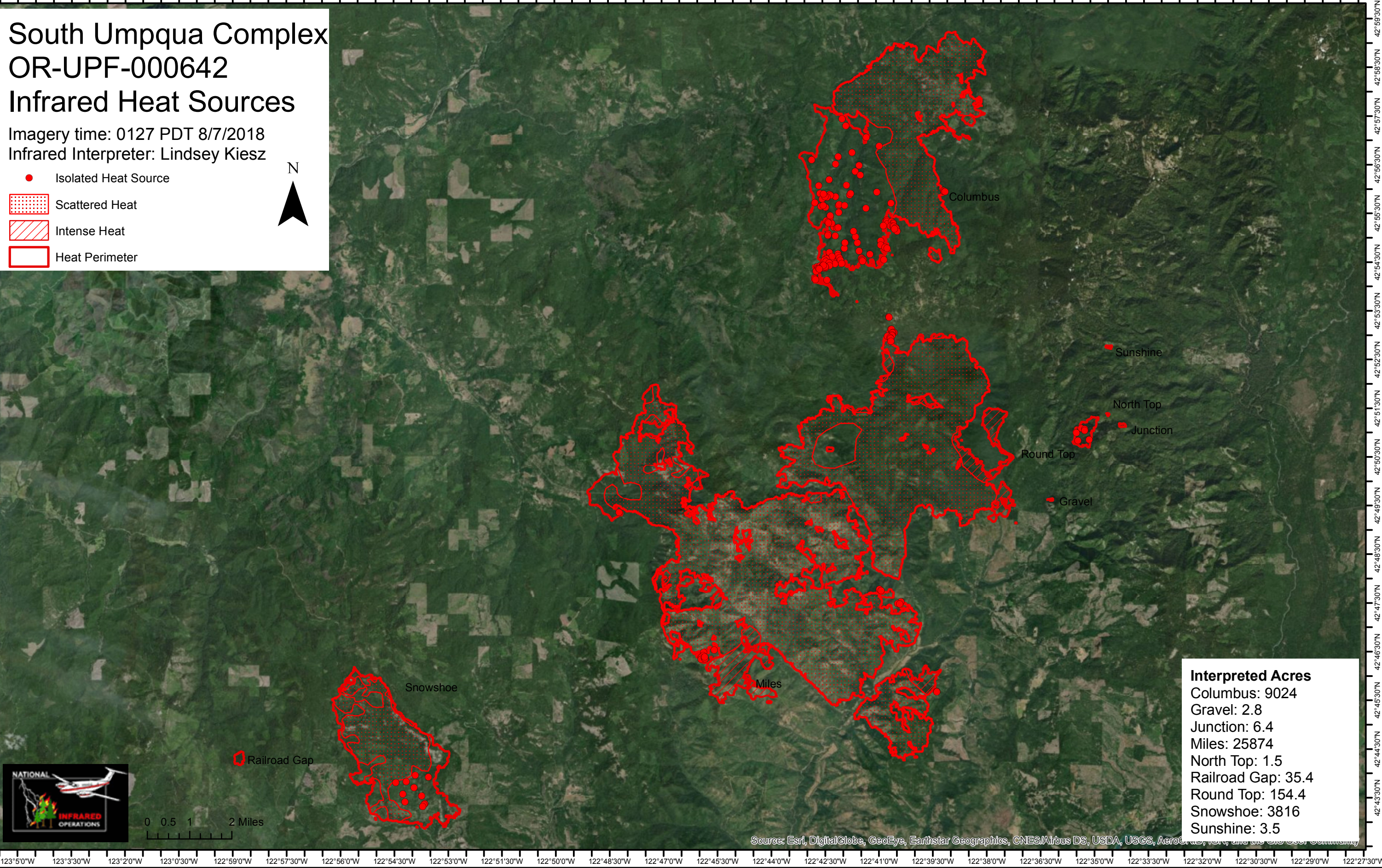


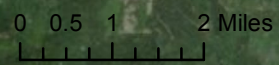
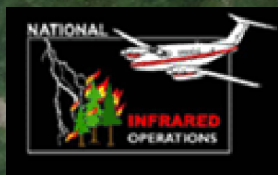
# South Umpqua Complex OR-UPF-000642 Infrared Heat Sources

Imagery time: 0127 PDT 8/7/2018  
Infrared Interpreter: Lindsey Kiesz

- Isolated Heat Source
- Scattered Heat
- Intense Heat
- Heat Perimeter



Interpreted Acres	
Columbus:	9024
Gravel:	2.8
Junction:	6.4
Miles:	25874
North Top:	1.5
Railroad Gap:	35.4
Round Top:	154.4
Snowshoe:	3816
Sunshine:	3.5



Source: Esri, DigitalGlobe, GeoEye, Earthstar Geographics, CNES/Airbus DS, USDA, USGS, AeroGRID, IGN, and the GIS User Community