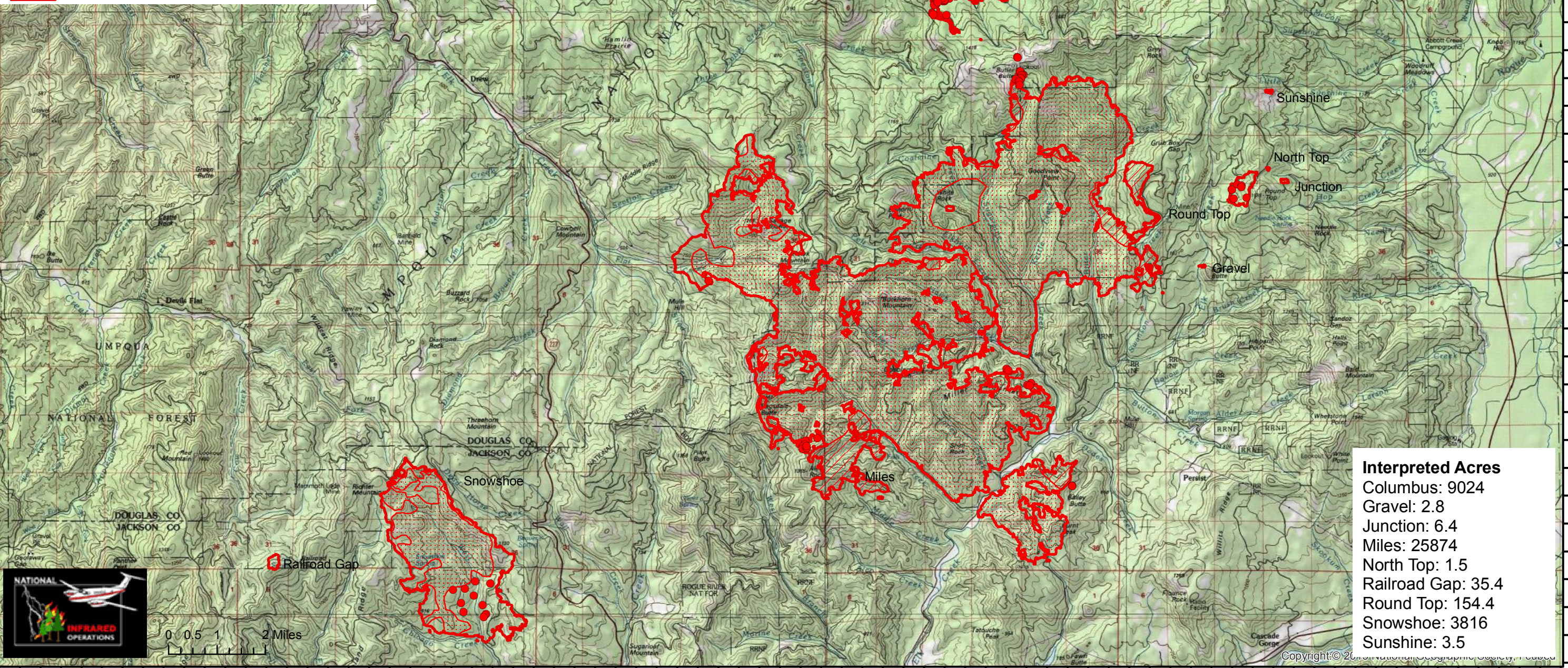


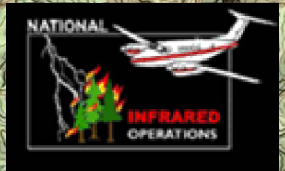
South Umpqua Complex OR-UPF-000642 Infrared Heat Sources

Imagery time: 0127 PDT 8/7/2018
Infrared Interpreter: Lindsey Kiesz

- Isolated Heat Source
- Scattered Heat
- Intense Heat
- Heat Perimeter



| Interpreted Acres | |
|-------------------|-------|
| Columbus: | 9024 |
| Gravel: | 2.8 |
| Junction: | 6.4 |
| Miles: | 25874 |
| North Top: | 1.5 |
| Railroad Gap: | 35.4 |
| Round Top: | 154.4 |
| Snowshoe: | 3816 |
| Sunshine: | 3.5 |



0 0.5 1 2 Miles

Copyright © 2018 National Geographic Society, Inc.