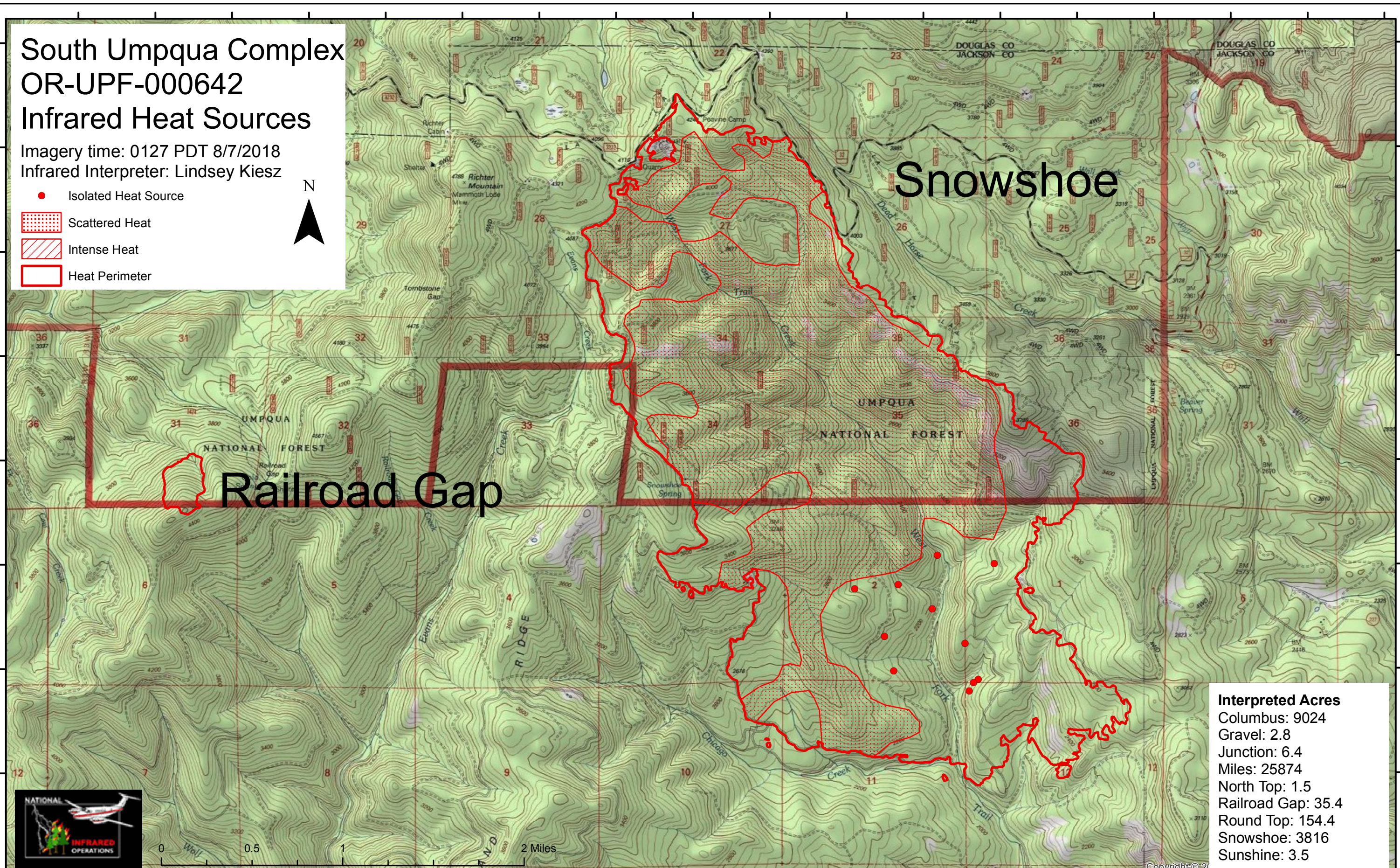


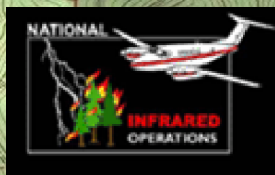
South Umpqua Complex OR-UPF-000642 Infrared Heat Sources

Imagery time: 0127 PDT 8/7/2018
Infrared Interpreter: Lindsey Kiesz

- Isolated Heat Source
- Scattered Heat
- Intense Heat
- Heat Perimeter



Interpreted Acres	
Columbus:	9024
Gravel:	2.8
Junction:	6.4
Miles:	25874
North Top:	1.5
Railroad Gap:	35.4
Round Top:	154.4
Snowshoe:	3816
Sunshine:	3.5



0 0.5 1 2 Miles

Copyright © 2018 National Geographic Society, Inc.

122°59'30"W 122°59'0"W 122°58'30"W 122°58'0"W 122°57'30"W 122°57'0"W 122°56'30"W 122°56'0"W 122°55'30"W 122°55'0"W 122°54'30"W 122°54'0"W 122°53'30"W 122°53'0"W 122°52'30"W 122°52'0"W 122°51'30"W 122°51'0"W

42°46'30"N
42°46'0"N
42°45'30"N
42°45'0"N
42°44'30"N
42°44'0"N
42°43'30"N
42°43'0"N