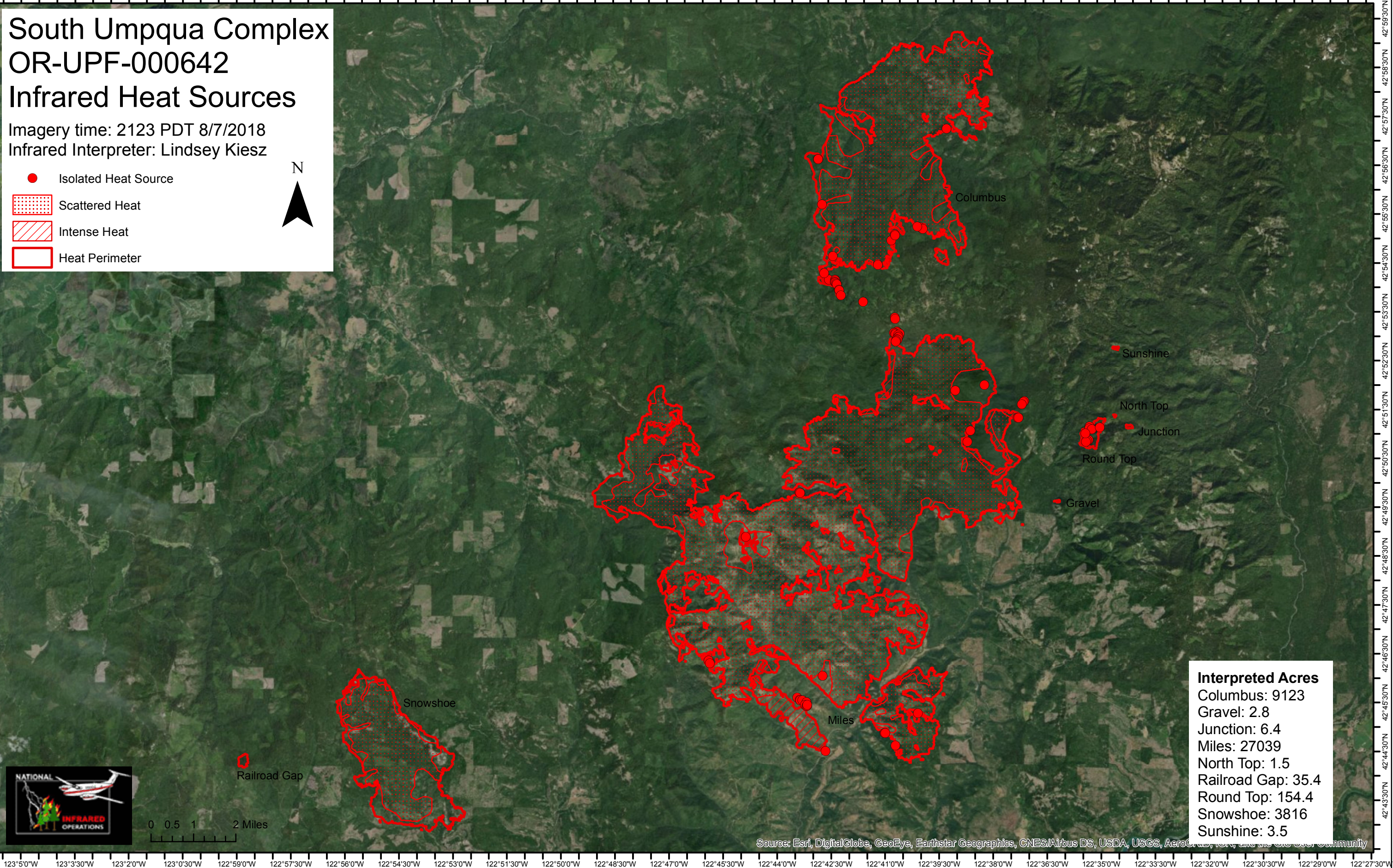


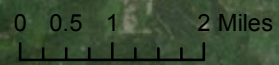
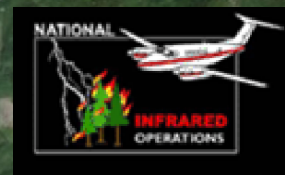
South Umpqua Complex OR-UPF-000642 Infrared Heat Sources

Imagery time: 2123 PDT 8/7/2018
Infrared Interpreter: Lindsey Kiesz

- Isolated Heat Source
- Scattered Heat
- Intense Heat
- Heat Perimeter



| Interpreted Acres | |
|-------------------|-------|
| Columbus: | 9123 |
| Gravel: | 2.8 |
| Junction: | 6.4 |
| Miles: | 27039 |
| North Top: | 1.5 |
| Railroad Gap: | 35.4 |
| Round Top: | 154.4 |
| Snowshoe: | 3816 |
| Sunshine: | 3.5 |



Source: Esri, DigitalGlobe, GeoEye, Earthstar Geographics, CNES/Airbus DS, USDA, USGS, AeroGRID, IGN, and the GIS User Community