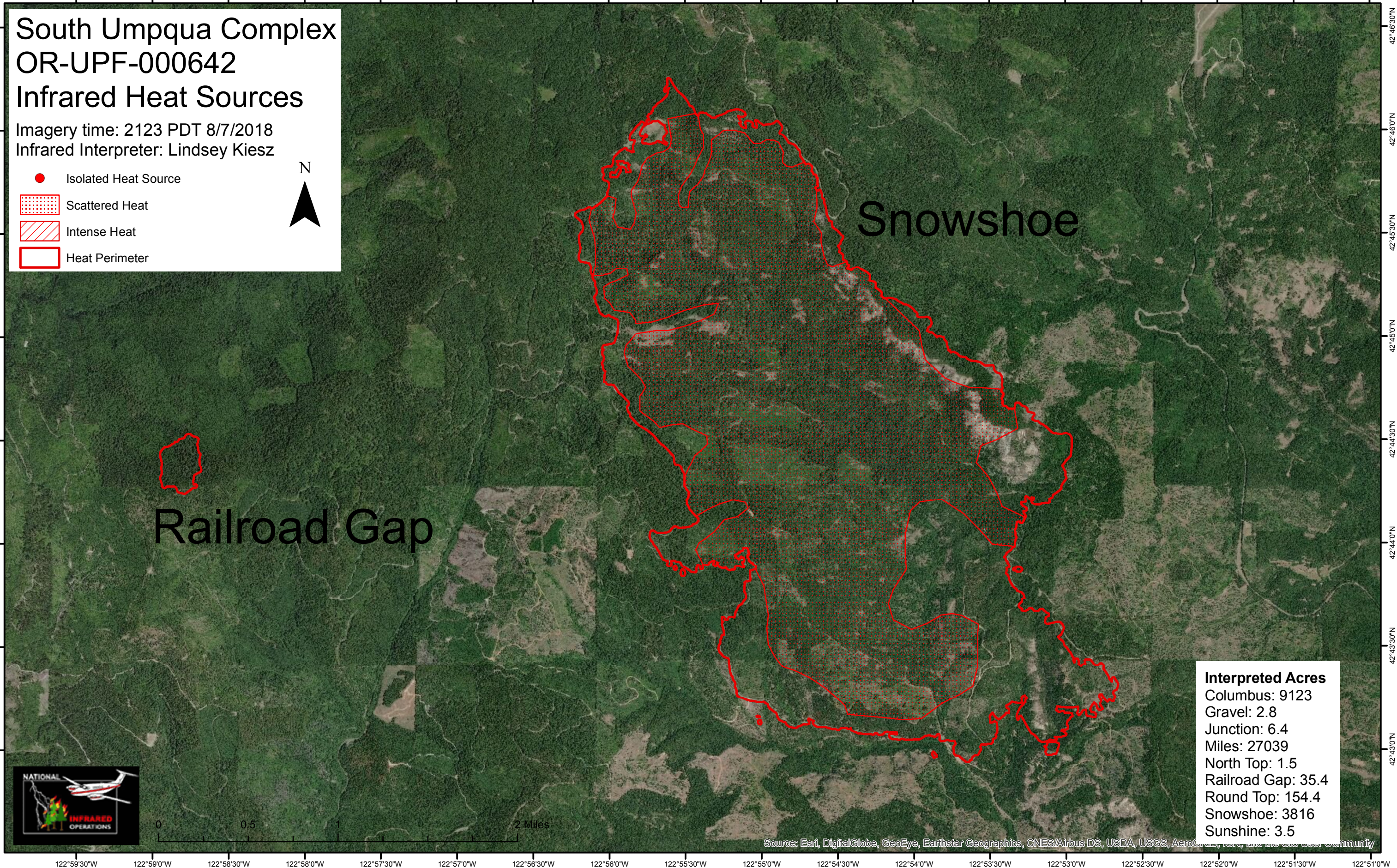


# South Umpqua Complex OR-UPF-000642 Infrared Heat Sources

Imagery time: 2123 PDT 8/7/2018  
Infrared Interpreter: Lindsey Kiesz

- Isolated Heat Source
- ▨ Scattered Heat
- ▨ Intense Heat
- ▭ Heat Perimeter



Railroad Gap

Snowshoe

Interpreted Acres	
Columbus:	9123
Gravel:	2.8
Junction:	6.4
Miles:	27039
North Top:	1.5
Railroad Gap:	35.4
Round Top:	154.4
Snowshoe:	3816
Sunshine:	3.5



0 0.5 1 2 Miles

Source: Esri, DigitalGlobe, GeoEye, Earthstar Geographics, CNES/Airbus DS, USDA, USGS, AeroGRID, IGN, and the GIS User Community

122°59'30"W 122°59'0"W 122°58'30"W 122°58'0"W 122°57'30"W 122°57'0"W 122°56'30"W 122°56'0"W 122°55'30"W 122°55'0"W 122°54'30"W 122°54'0"W 122°53'30"W 122°53'0"W 122°52'30"W 122°52'0"W 122°51'30"W 122°51'0"W

42°46'30"N 42°46'0"N 42°45'30"N 42°45'0"N 42°44'30"N 42°44'0"N 42°43'30"N 42°43'0"N