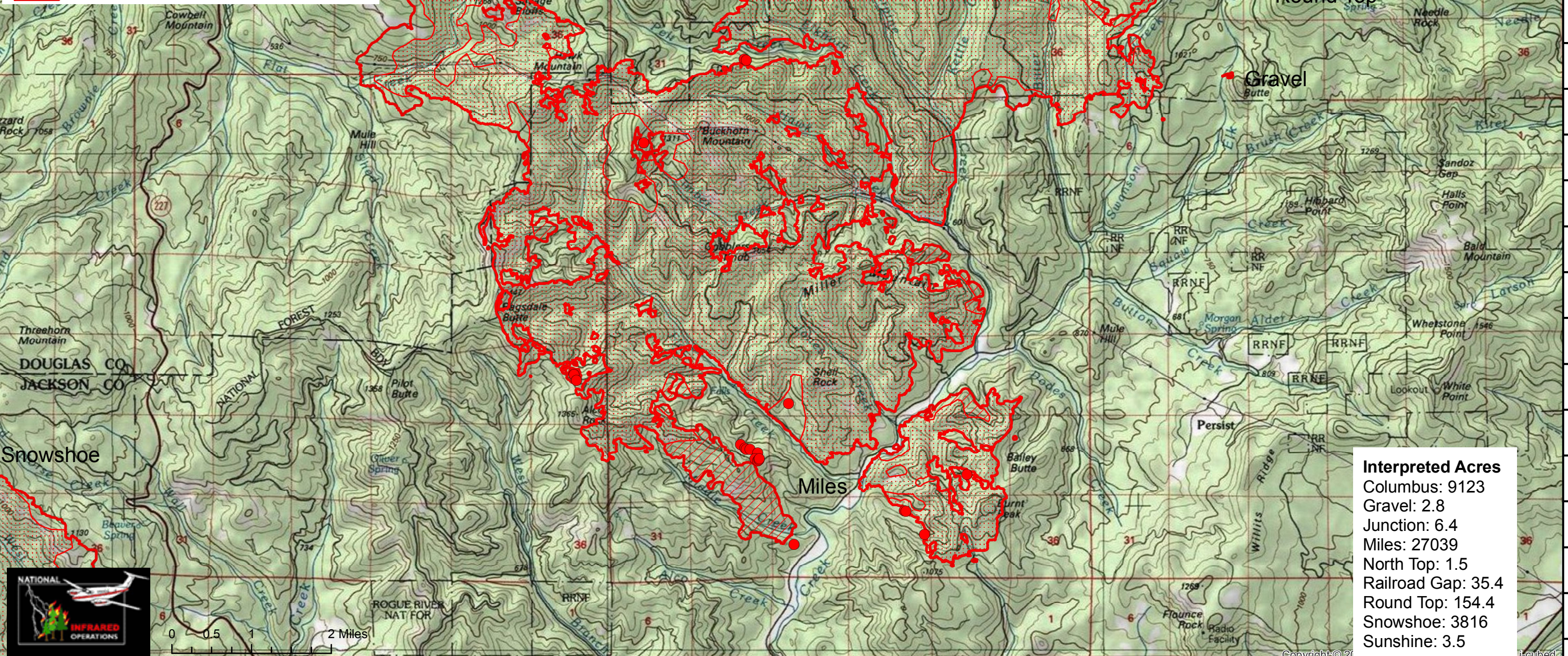


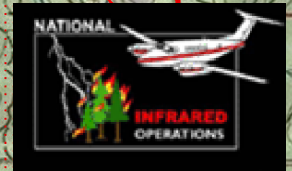
South Umpqua Complex OR-UPF-000642 Infrared Heat Sources

Imagery time: 2123 PDT 8/7/2018
Infrared Interpreter: Lindsey Kiesz

- Isolated Heat Source
- Scattered Heat
- Intense Heat
- Heat Perimeter



Interpreted Acres	
Columbus:	9123
Gravel:	2.8
Junction:	6.4
Miles:	27039
North Top:	1.5
Railroad Gap:	35.4
Round Top:	154.4
Snowshoe:	3816
Sunshine:	3.5



0 0.5 1 2 Miles

Copyright © 2010 National Geographic Society, Inc.

122°53'30"W 122°52'30"W 122°51'30"W 122°50'30"W 122°49'30"W 122°48'30"W 122°47'30"W 122°46'30"W 122°45'30"W 122°44'30"W 122°43'30"W 122°42'30"W 122°41'30"W 122°40'30"W 122°39'30"W 122°38'30"W 122°37'30"W 122°36'30"W 122°35'30"W 122°34'30"W 122°33'30"W 122°32'30"W 122°31'30"W

42°43'30"N 42°44'00"N 42°44'30"N 42°45'00"N 42°45'30"N 42°46'00"N 42°46'30"N 42°47'00"N 42°47'30"N 42°48'00"N 42°48'30"N 42°49'00"N 42°49'30"N 42°50'00"N 42°50'30"N 42°51'00"N 42°51'30"N 42°52'00"N 42°52'30"N 42°53'00"N