

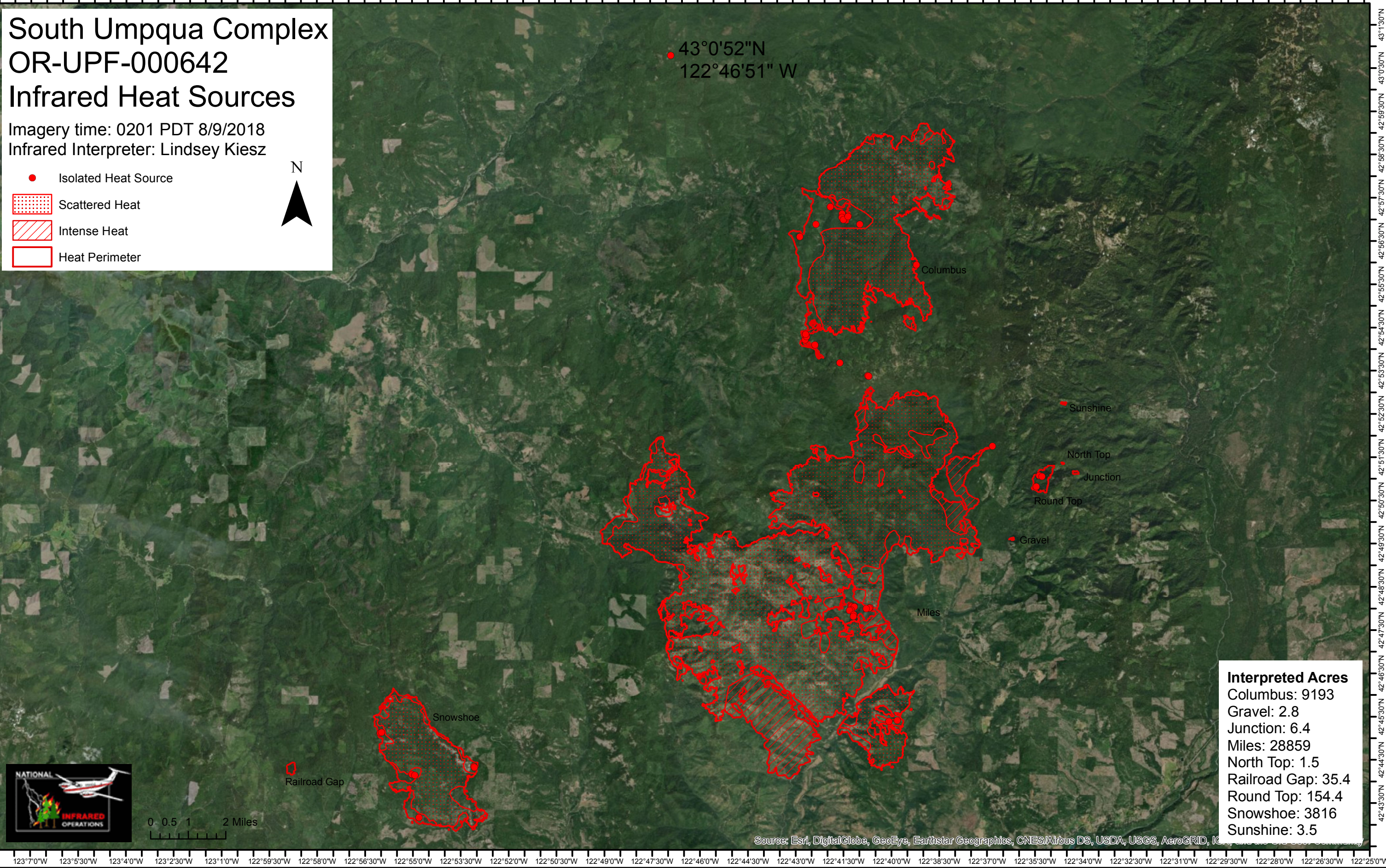
# South Umpqua Complex OR-UPF-000642 Infrared Heat Sources

Imagery time: 0201 PDT 8/9/2018  
Infrared Interpreter: Lindsey Kiesz

- Isolated Heat Source
- Scattered Heat
- Intense Heat
- Heat Perimeter



43°0'52"N  
122°46'51" W



Interpreted Acres	
Columbus:	9193
Gravel:	2.8
Junction:	6.4
Miles:	28859
North Top:	1.5
Railroad Gap:	35.4
Round Top:	154.4
Snowshoe:	3816
Sunshine:	3.5



0 0.5 1 2 Miles

Source: Esri, DigitalGlobe, GeoEye, Earthstar Geographics, CNES/Airbus DS, USDA, USGS, AeroGRID, IGN, etc.

123°7'0"W 123°5'30"W 123°4'0"W 123°2'30"W 123°1'0"W 122°59'30"W 122°58'0"W 122°56'30"W 122°55'0"W 122°53'30"W 122°52'0"W 122°50'30"W 122°49'0"W 122°47'30"W 122°46'0"W 122°44'30"W 122°43'0"W 122°41'30"W 122°40'0"W 122°38'30"W 122°37'0"W 122°35'30"W 122°34'0"W 122°32'30"W 122°31'0"W 122°29'30"W 122°28'0"W 122°26'30"W 122°25'0"W

43°1'30"N 43°0'30"N 42°59'30"N 42°58'30"N 42°57'30"N 42°56'30"N 42°55'30"N 42°54'30"N 42°53'30"N 42°52'30"N 42°51'30"N 42°50'30"N 42°49'30"N 42°48'30"N 42°47'30"N 42°46'30"N 42°45'30"N 42°44'30"N 42°43'30"N