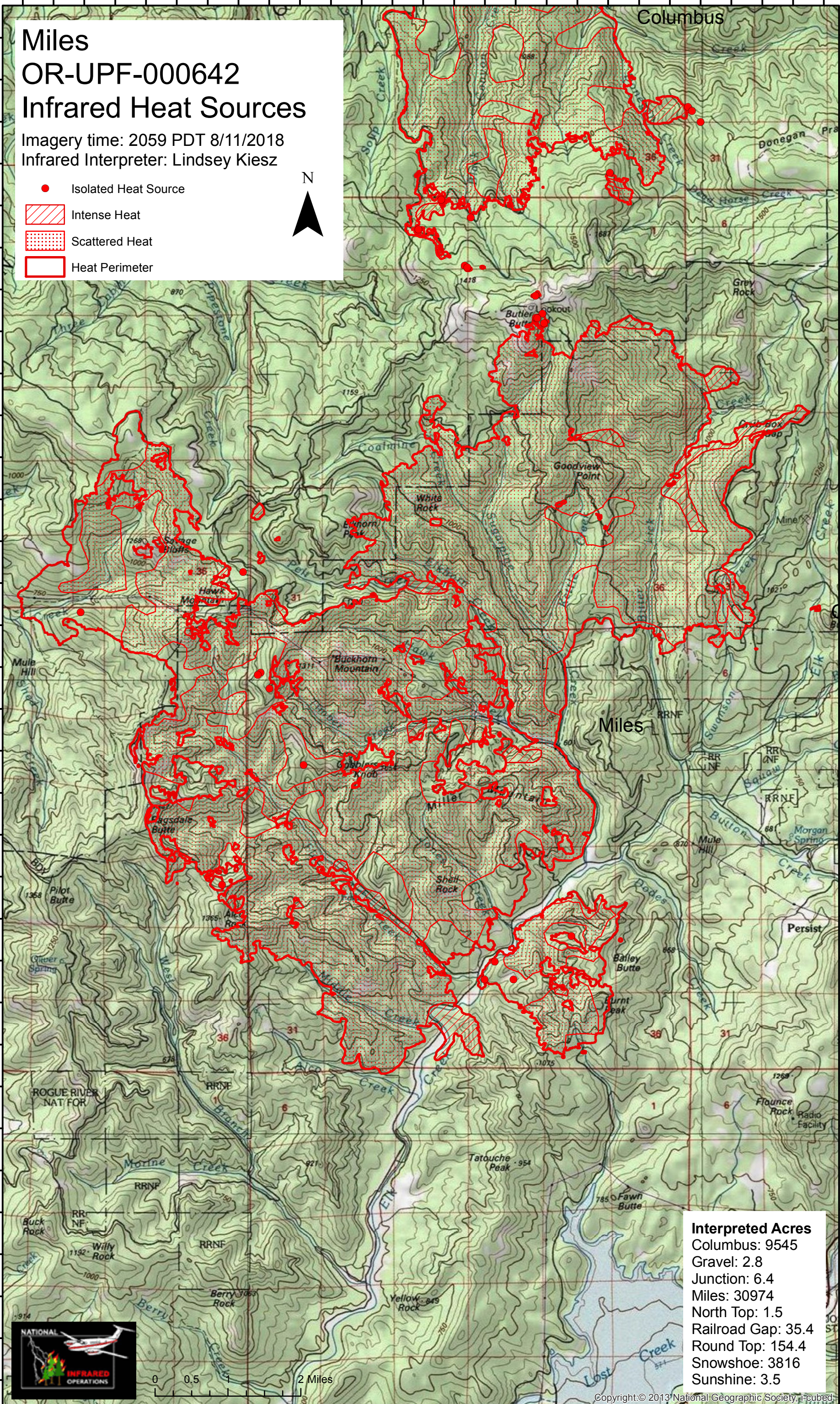


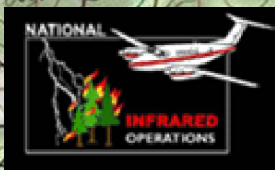
Miles OR-UPF-000642 Infrared Heat Sources

Imagery time: 2059 PDT 8/11/2018
Infrared Interpreter: Lindsey Kiesz

- Isolated Heat Source
- Intense Heat
- Scattered Heat
- Heat Perimeter



Interpreted Acres	
Columbus:	9545
Gravel:	2.8
Junction:	6.4
Miles:	30974
North Top:	1.5
Railroad Gap:	35.4
Round Top:	154.4
Snowshoe:	3816
Sunshine:	3.5



Copyright: © 2013 National Geographic Society, Inc.

122°49'0"W 122°48'0"W 122°47'0"W 122°46'0"W 122°45'0"W 122°44'0"W 122°43'0"W 122°42'0"W 122°41'0"W 122°40'0"W 122°39'0"W 122°38'0"W 122°37'0"W 122°36'0"W

42°40'30"N 42°41'0"N 42°41'30"N 42°42'0"N 42°42'30"N 42°43'0"N 42°43'30"N 42°44'0"N 42°44'30"N 42°45'0"N 42°45'30"N 42°46'0"N 42°46'30"N 42°47'0"N 42°47'30"N 42°48'0"N 42°48'30"N 42°49'0"N 42°49'30"N 42°50'0"N 42°50'30"N 42°51'0"N 42°51'30"N 42°52'0"N 42°52'30"N 42°53'0"N 42°53'30"N 42°54'0"N 42°54'30"N 42°55'0"N 42°55'30"N 42°56'0"N 42°56'30"N