

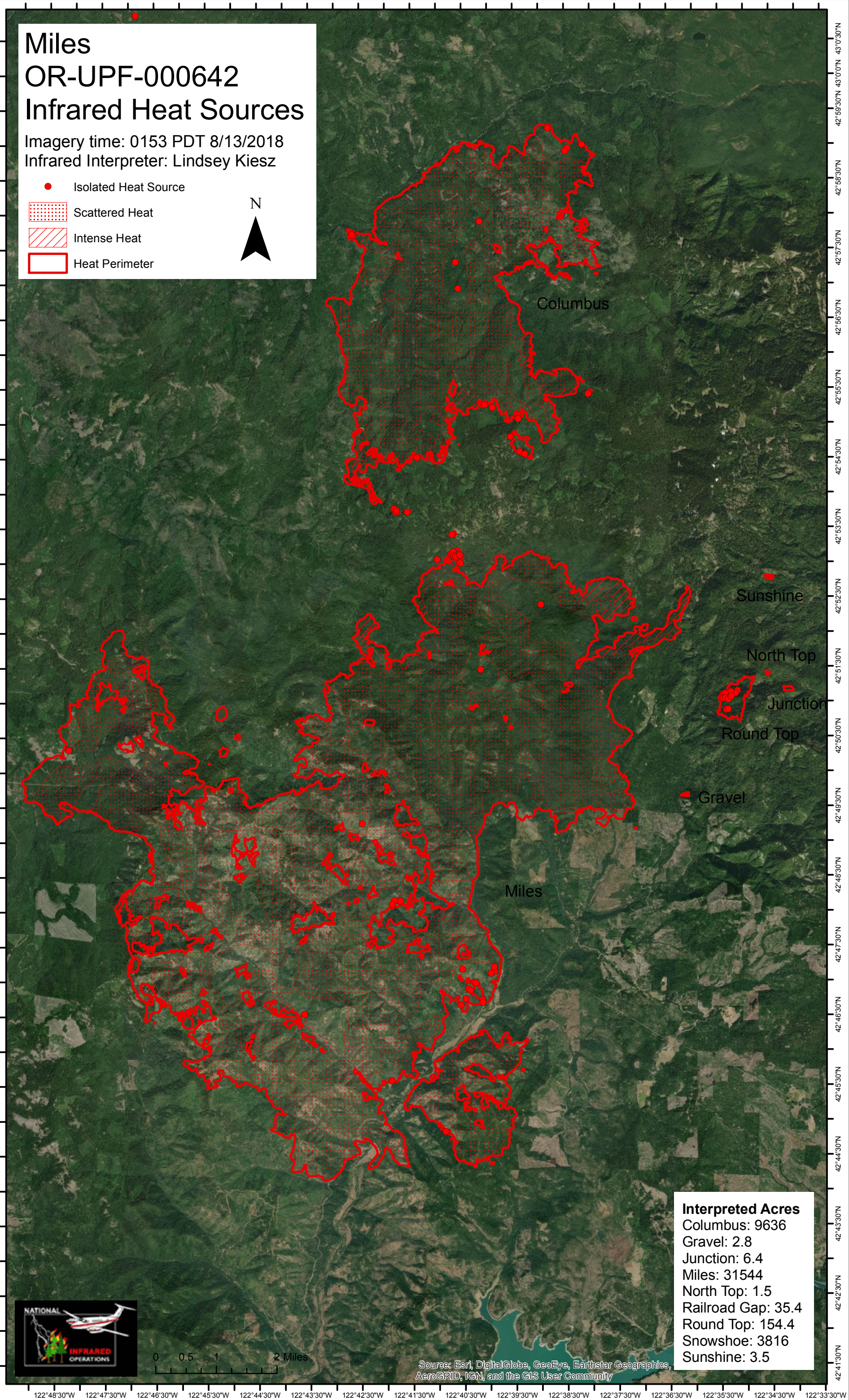
# Miles

## OR-UPF-000642

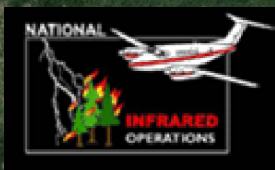
### Infrared Heat Sources

Imagery time: 0153 PDT 8/13/2018  
 Infrared Interpreter: Lindsey Kiesz

- Isolated Heat Source
- Scattered Heat
- Intense Heat
- Heat Perimeter



Interpreted Acres	
Columbus:	9636
Gravel:	2.8
Junction:	6.4
Miles:	31544
North Top:	1.5
Railroad Gap:	35.4
Round Top:	154.4
Snowshoe:	3816
Sunshine:	3.5



Source: Esri, DigitalGlobe, GeoEye, Earthstar Geographics, AeroGRID, IGN, and the GIS User Community

122°48'30"W 122°47'30"W 122°46'30"W 122°45'30"W 122°44'30"W 122°43'30"W 122°42'30"W 122°41'30"W 122°40'30"W 122°39'30"W 122°38'30"W 122°37'30"W 122°36'30"W 122°35'30"W 122°34'30"W 122°33'30"W

43°0'30"N  
42°59'30"N  
42°58'30"N  
42°57'30"N  
42°56'30"N  
42°55'30"N  
42°54'30"N  
42°53'30"N  
42°52'30"N  
42°51'30"N  
42°50'30"N  
42°49'30"N  
42°48'30"N  
42°47'30"N  
42°46'30"N  
42°45'30"N  
42°44'30"N  
42°43'30"N  
42°42'30"N  
42°41'30"N