





Miles

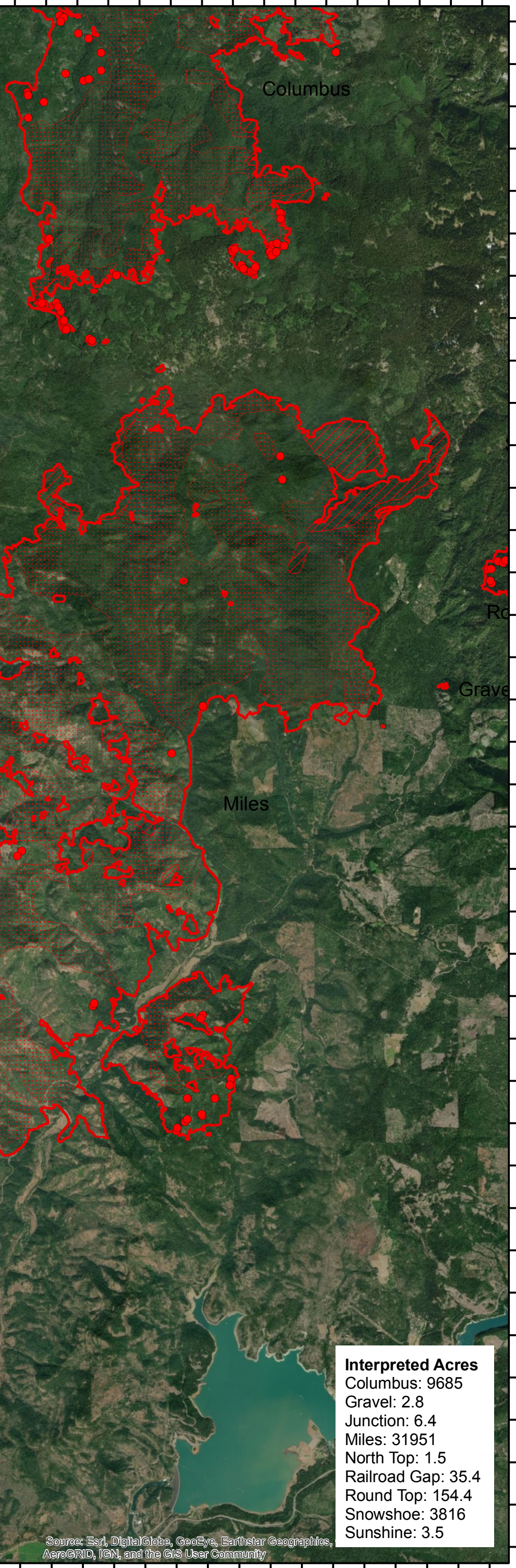
OR-UPF-000642

Infrared Heat Sources

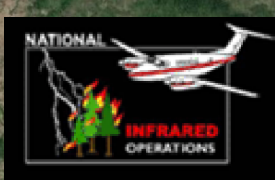
Imagery time: 2106 PDT 8/13/2018

Infrared Interpreter: Lindsey Kiesz

-  Isolated Heat Source
-  Intense Heat
-  Scattered Heat
-  Heat Perimeter



Interpreted Acres	
Columbus:	9685
Gravel:	2.8
Junction:	6.4
Miles:	31951
North Top:	1.5
Railroad Gap:	35.4
Round Top:	154.4
Snowshoe:	3816
Sunshine:	3.5



Source: Esri, DigitalGlobe, GeoEye, Earthstar Geographics, AeroGRID, IGN, and the GIS User Community

122°49'30"W 122°48'30"W 122°47'30"W 122°46'30"W 122°45'30"W 122°44'30"W 122°43'30"W 122°42'30"W 122°41'30"W 122°40'30"W 122°39'30"W 122°38'30"W 122°37'30"W 122°36'30"W 122°35'30"W

42°39'30"N 42°40'0"N 42°40'30"N 42°41'0"N 42°41'30"N 42°42'0"N 42°42'30"N 42°43'0"N 42°43'30"N 42°44'0"N 42°44'30"N 42°45'0"N 42°45'30"N 42°46'0"N 42°46'30"N 42°47'0"N 42°47'30"N 42°48'0"N 42°48'30"N 42°49'0"N 42°49'30"N 42°50'0"N 42°50'30"N 42°51'0"N 42°51'30"N 42°52'0"N 42°52'30"N 42°53'0"N 42°53'30"N 42°54'0"N 42°54'30"N 42°55'0"N 42°55'30"N 42°56'0"N 42°56'30"N 42°57'0"N 42°57'30"N