



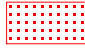


Miles

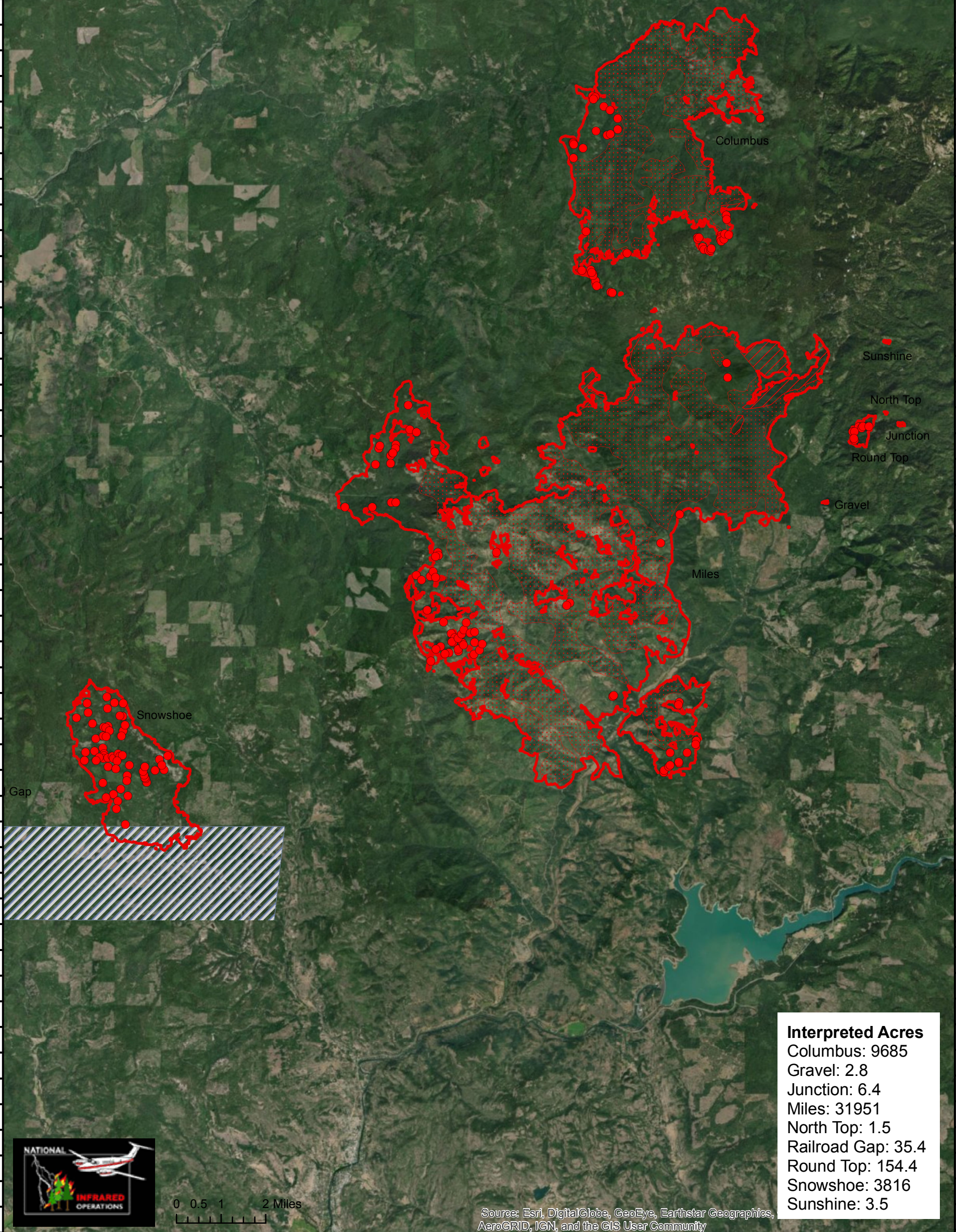
OR-UPF-000642

# Infrared Heat Sources

Imagery time: 2106 PDT 8/13/2018

Infrared Interpreter: Lindsey Kiesz

-  Isolated Heat Source
-  Intense Heat
-  Scattered Heat
-  Heat Perimeter
-  No data



Interpreted Acres	
Columbus:	9685
Gravel:	2.8
Junction:	6.4
Miles:	31951
North Top:	1.5
Railroad Gap:	35.4
Round Top:	154.4
Snowshoe:	3816
Sunshine:	3.5



Source: Esri, DigitalGlobe, GeoEye, Earthstar Geographics, AeroGRID, IGN, and the GIS User Community

122°57'0"W 122°55'30"W 122°54'0"W 122°52'30"W 122°51'0"W 122°49'30"W 122°48'0"W 122°46'30"W 122°45'0"W 122°43'30"W 122°42'0"W 122°40'30"W 122°39'0"W 122°37'30"W 122°36'0"W 122°34'30"W 122°33'0"W

43°5'0"N 43°4'0"N 43°3'0"N 43°2'0"N 43°1'0"N 43°0'0"N 42°59'0"N 42°58'0"N 42°57'0"N 42°56'0"N 42°55'0"N 42°54'0"N 42°53'0"N 42°52'0"N 42°51'0"N 42°50'0"N 42°49'0"N 42°48'0"N 42°47'0"N 42°46'0"N 42°45'0"N 42°44'0"N 42°43'0"N 42°42'0"N 42°41'0"N 42°40'0"N 42°39'0"N 42°38'0"N 42°37'0"N 42°36'0"N