

Miles

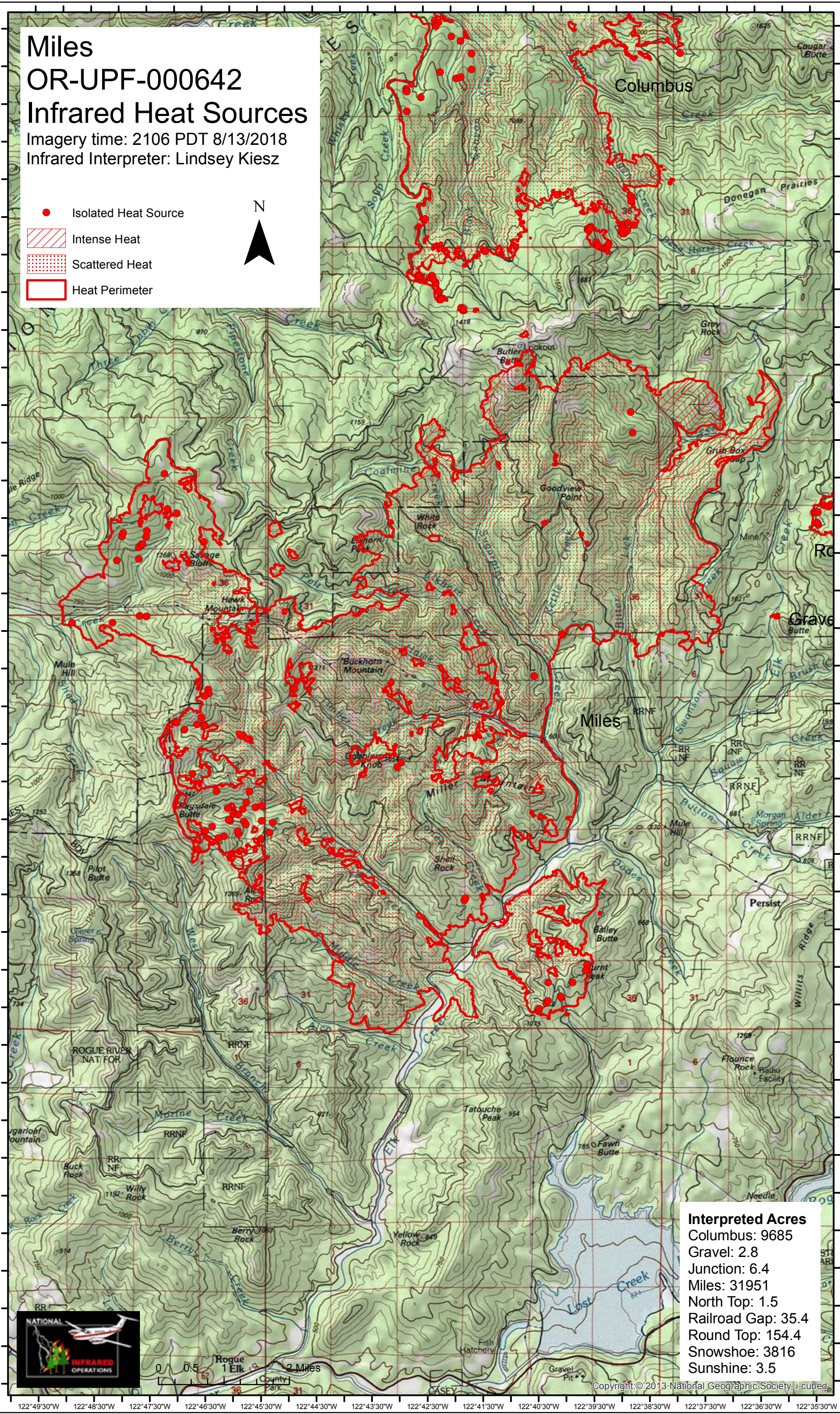
OR-UPF-000642

Infrared Heat Sources

Imagery time: 2106 PDT 8/13/2018

Infrared Interpreter: Lindsey Kiesz

- Isolated Heat Source
- Intense Heat
- Scattered Heat
- Heat Perimeter



Interpreted Acres	
Columbus:	9685
Gravel:	2.8
Junction:	6.4
Miles:	31951
North Top:	1.5
Railroad Gap:	35.4
Round Top:	154.4
Snowshoe:	3816
Sunshine:	3.5



Copyright © 2013 National Geographic Society, i-cubed

122°49'30"W 122°48'30"W 122°47'30"W 122°46'30"W 122°45'30"W 122°44'30"W 122°43'30"W 122°42'30"W 122°41'30"W 122°40'30"W 122°39'30"W 122°38'30"W 122°37'30"W 122°36'30"W 122°35'30"W

42°39'30"N 42°40'00"N 42°40'30"N 42°41'00"N 42°41'30"N 42°42'00"N 42°42'30"N 42°43'00"N 42°43'30"N 42°44'00"N 42°44'30"N 42°45'00"N 42°45'30"N 42°46'00"N 42°46'30"N 42°47'00"N 42°47'30"N 42°48'00"N 42°48'30"N 42°49'00"N 42°49'30"N 42°50'00"N 42°50'30"N 42°51'00"N 42°51'30"N 42°52'00"N 42°52'30"N 42°53'00"N 42°53'30"N 42°54'00"N 42°54'30"N 42°55'00"N 42°55'30"N 42°56'00"N 42°56'30"N 42°57'00"N 42°57'30"N