

## INFRARED INTERPRETER'S DAILY LOG

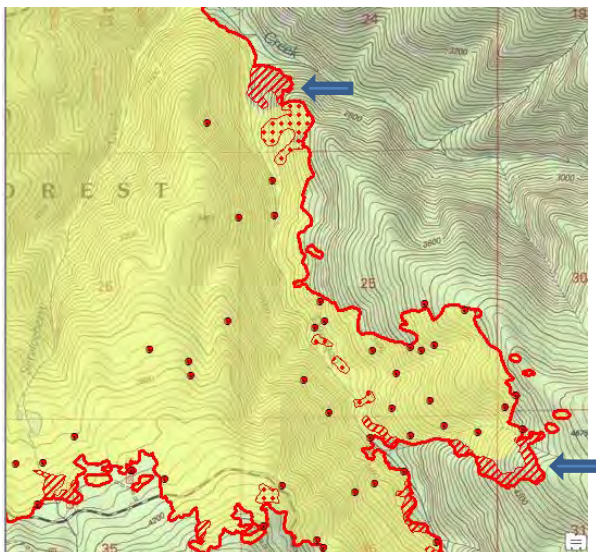
<b>Incident Name:</b> Miles OR-UPF-000264	<b>IR Interpreter(s):</b> Tammy Hocut thocut@fs.fed.us	<b>Local Dispatch Phone:</b> Rogue Valley CC 541-618-2510	<b>Interpreted Size (acres):</b> Columbus: 9,814 Miles: 32,934 <b>Growth last period (acres):</b> Columbus: 52 Miles: 415
<b>Flight Time:</b> 2215 (MDT) <b>Flight Date:</b> 08/16/2018	<b>Interpreter(s) location:</b> Jasper, AR <b>Interpreter(s) Phone:</b> 870-446-5878 (landline) 870-365-2810 (cell)	<b>GACC IR Liaison:</b> Jim Grace <b>GACC IR Liaison Phone:</b> 541-416-6593	<b>National Coordinator:</b> Jan Johnson <b>National Coord. Phone:</b> 208-387-5900
<b>Ordered By:</b> Joe Bishop - SITL 352-516-9767 joseph.bishop@freshfromflorida.com	<b>A Number:</b> A-22	<b>Aircraft/Scanner System:</b> N149Z / Phoenix	<b>Pilots/Techs:</b> Netcher/Nelson/Brantlinger
<b>IRIN Comments on imagery:</b> 2 film strips in north to south runs.		<b>Weather at time of flight:</b> Clear	<b>Flight Objective:</b> Identify and map Heat perimeter, Scattered Heat and Isolated Heat Sources.
<b>Date and Time Imagery Received by Interpreter:</b> 08/16/2018 – 2253 (MDT)		<b>Type of media for final product:</b> Shape files, KMZ, PDF, and IRIN Log	
<b>Date and Time Products Delivered to Incident:</b> 08/17/2018 – 0057 (MDT)		<b>Digital files sent to: NIFC FTP @</b> <a href="https://ftp.nifc.gov/public/incident_specific_data/pacific_nw/2018/Incidents/Oregon/2018_SouthUmpquaComplex_OR_UPF_000264/IR/20180817/">https://ftp.nifc.gov/public/incident_specific_data/pacific_nw/2018/Incidents/Oregon/2018_SouthUmpquaComplex_OR_UPF_000264/IR/20180817/</a>	

**Comments /notes on tonight's mission and this interpretation:**

I started infra-red heat perimeter from 08/15/2018. New growth – 467 acres.

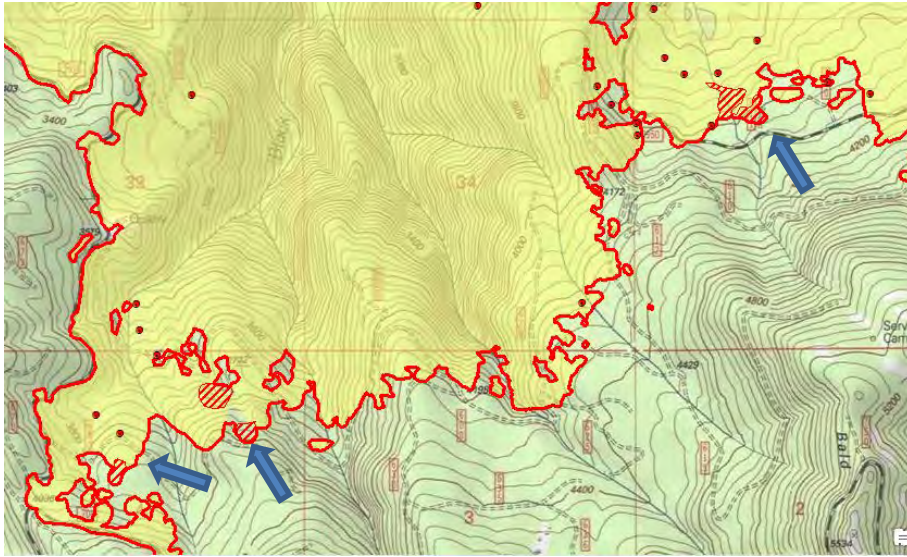
Yellow is 8/15/2018's IR heat perimeter. Red line is current IR heat perimeter.

- **Columbus:** 9,814 acres – 52 acres growth. Growth was on the east side of the fire near Squaw Creek and in sections 36 and 31 near Donegan Creek with some small intense heat areas.

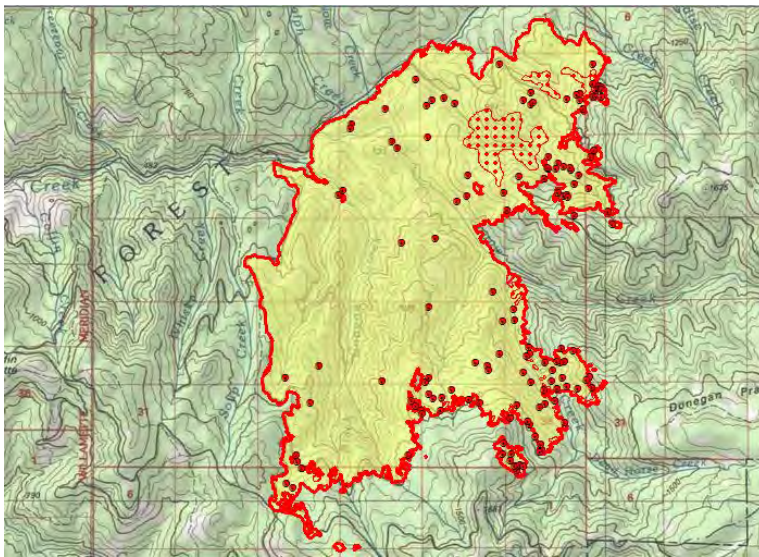


## INFRARED INTERPRETER'S DAILY LOG

There was also a small area of growth on the south side of the fire in sections 35 and 4.



Light isolated heat on the north and east side of the fire with some pockets of scattered heat on the north side of the fire.



- **Miles:** 32,934 acres. Growth on the north side of the fire in the Grey Rock area with intense heat along heat perimeter edge. Growth also just south of Butler Butte and also near Coalmine Creek. Heat perimeter islands in the Elkhorn Peak area grew with a lot of intense heat and new heat islands in section 29 just south of Elhorn Peak.



# INFRARED INTERPRETER'S DAILY LOG

- **Round Top:** 154.4 acres. One isolated heat source was within the heat perimeter.

