

122°45'W

122°40'W

122°35'W

43°0'N

43°0'N

Infrared Map
Miles (OR-UPF-000246)

Map Date: 08/17/2018

Imagery Date: 08/16/2018

Imagery Time: 2215 MDT

IR Interpreted Acres: 9,814 - Columbus

IR Interpreted Acres: 32,934 - Miles

IR Interpreted Acres: 154 - Round Top

Not Covered by Infra-red Scan:

Gravel - 2.8 acres, Junction - 6.4 acres,

North Top - 1.5 acres, Railroad Gap - 35.4 acres,

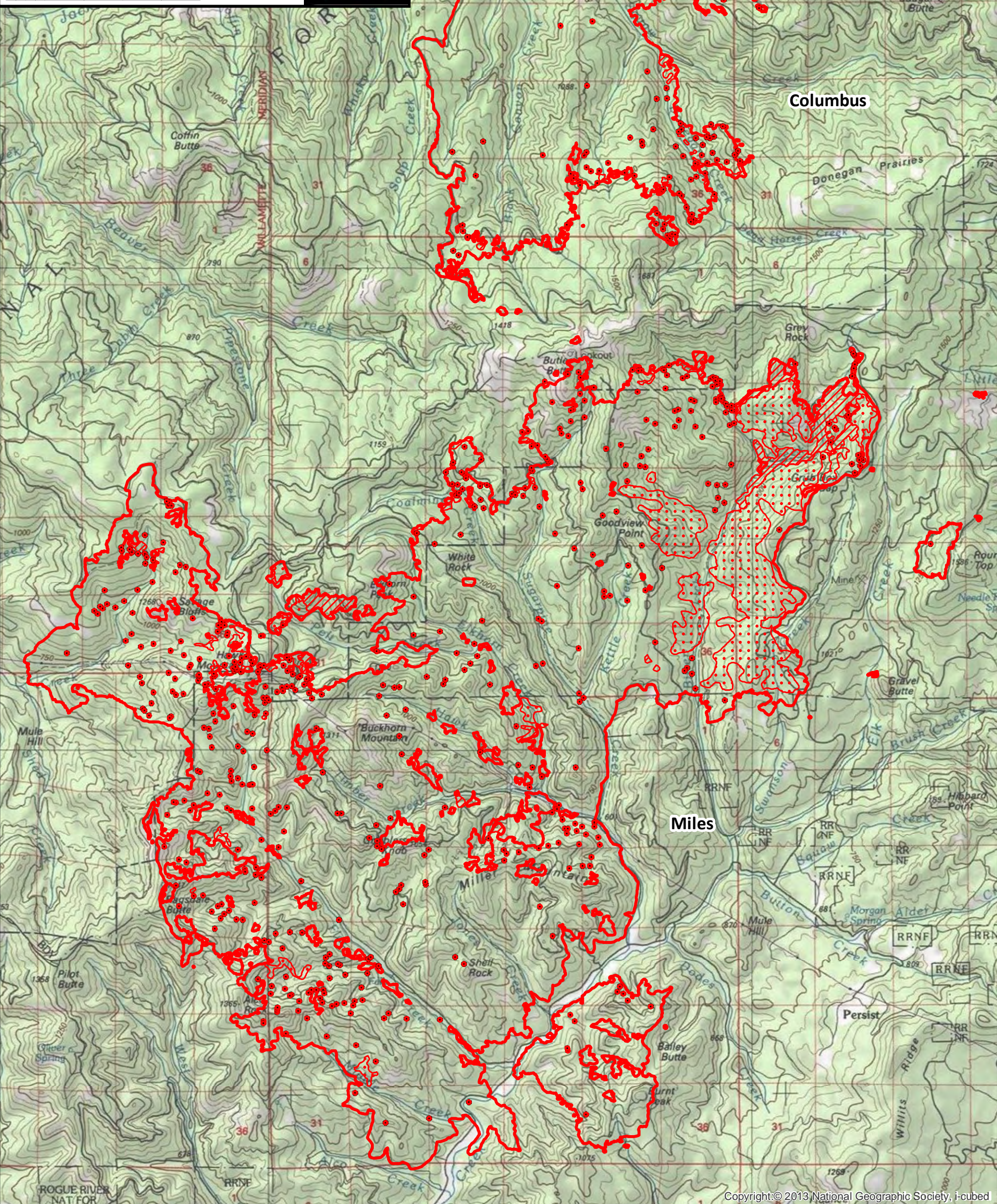
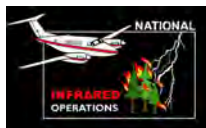
Snowshoe - 3,816 acres, Sunshine - 3.5 acres

IRIN: Tammy Hocut

- Isolated Heat Sources
- Heat Perimeter
- Intense Heat
- Scattered Heat

NAD 1983 UTM Zone 10N

0 0.25 0.5 1 1.5 2 2.5 Miles



42°55'N

42°55'N

42°50'N

42°50'N

42°45'N

42°45'N

ROGUE RIVER NAT FOR

122°45'W

122°40'W

122°35'W