

122°50'W 122°45'W 122°40'W 122°35'W

**Infrared Map**

Miles (OR-UPF-000246)

Map Date: 08/18/2018

Imagery Date: 08/18/2018

Imagery Time: 0244 MDT

IR Interpreted Acres: 9,841 - Columbus

IR Interpreted Acres: 33,204 - Miles

IR Interpreted Acres: 154 - Round Top

**Not Covered by Infra-red Scan:**

Gravel - 2.8 acres, Junction - 6.4 acres,

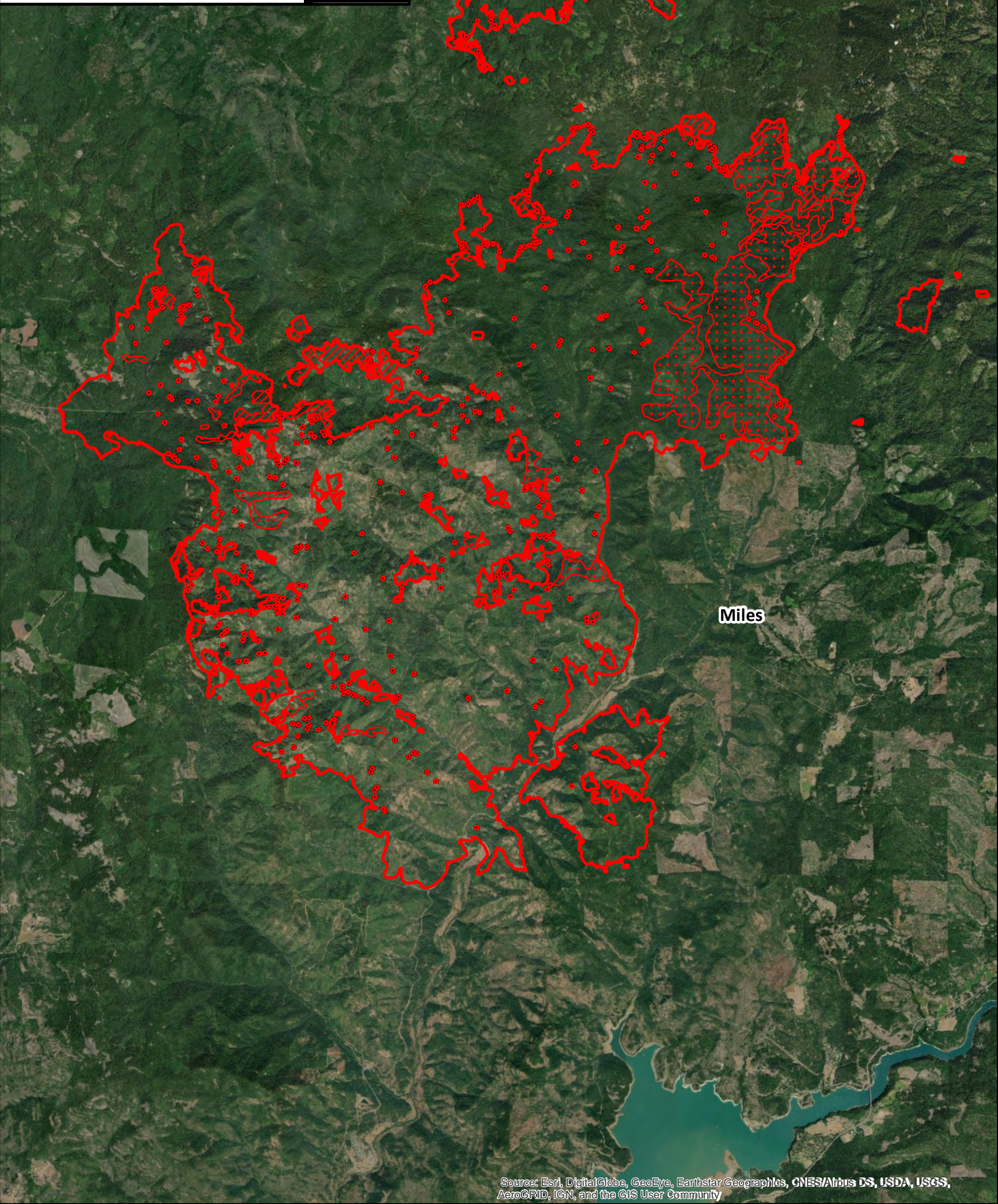
North Top - 1.5 acres, Railroad Gap - 35.4 acres,

Snowshoe - 3,816 acres, Sunshine - 3.5 acres

IRIN: Tammy Hocut

- Isolated Heat Sources
- Heat Perimeter
- Intense Heat
- Scattered Heat

NAD 1983 UTM Zone 10N  
0 0.25 0.5 1 1.5 2 2.5 Miles



Miles

42°55'N

42°50'N

42°45'N

42°55'N

42°50'N

42°45'N

122°50'W 122°45'W 122°40'W 122°35'W

Source: Esri, DigitalGlobe, GeoEye, Earthstar Geographics, CNES/Airbus DS, USDA, USGS, AeroGRID, IGN, and the GIS User Community