

122°40'W

Infrared Map

Miles (OR-UPF-000246)

Map Date: 08/18/2018

Imagery Date: 08/18/2018

Imagery Time: 0244 MDT

IR Interpreted Acres: 9,841 - Columbus

IR Interpreted Acres: 33,204 - Miles

IR Interpreted Acres: 154 - Round Top

- Isolated Heat Sources
- Heat Perimeter
- Intense Heat
- Scattered Heat

Not Covered by Infra-red Scan:
 Gravel - 2.8 acres, Junction - 6.4 acres,
 North Top - 1.5 acres, Railroad Gap - 35.4 acres,
 Snowshoe - 3,816 acres, Sunshine - 3.5 acres

IRIN: Tammy Hocut

NAD 1983 UTM Zone 10N
 0 0.25 0.5 1 Miles

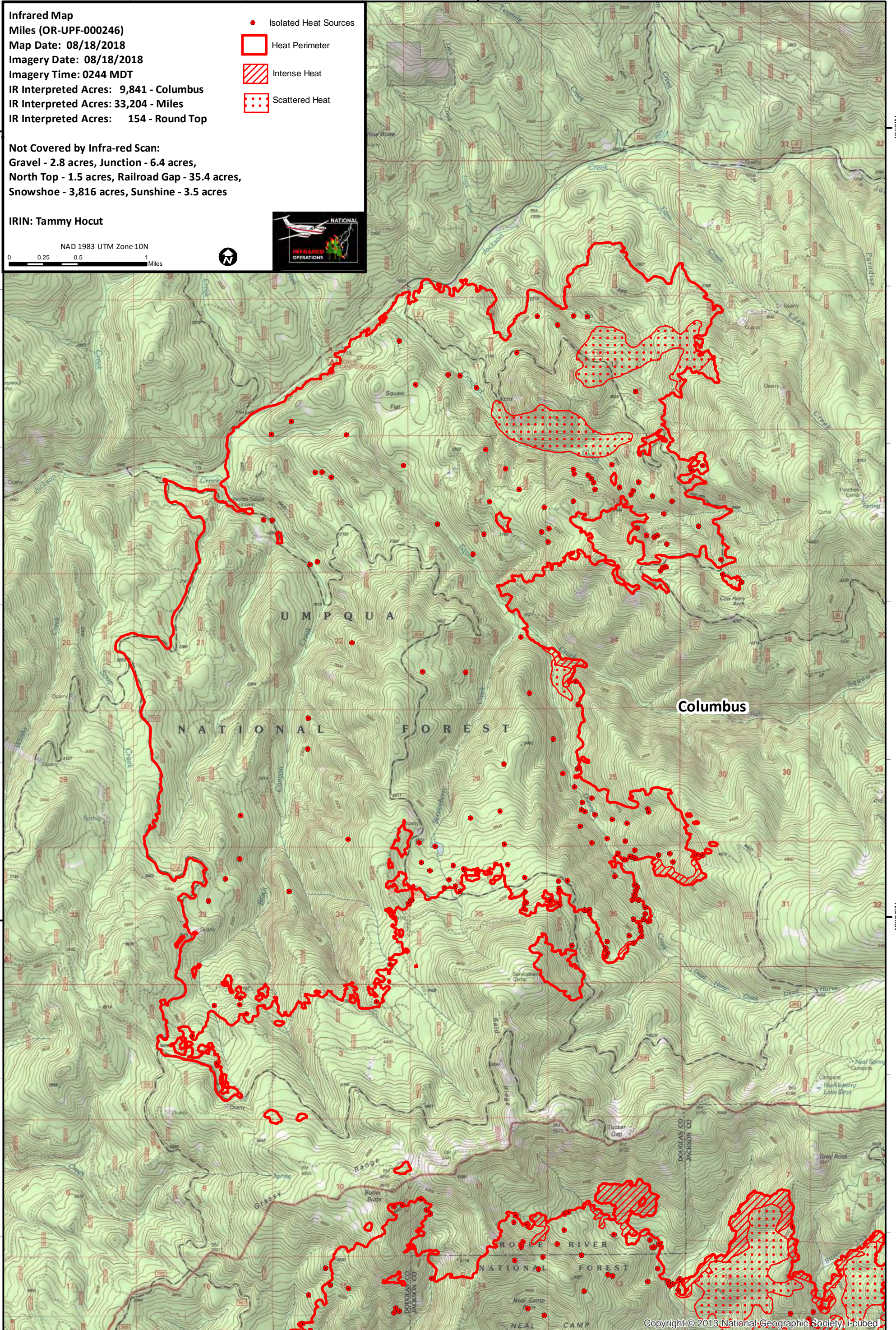


43°0'N

43°0'N

42°55'N

42°55'N



122°40'W