

122°50'W 122°45'W 122°40'W 122°35'W

Infrared Map

Miles (OR-UPF-000246)

Map Date: 08/18/2018

Imagery Date: 08/18/2018

Imagery Time: 0244 MDT

IR Interpreted Acres: 9,841 - Columbus

IR Interpreted Acres: 33,204 - Miles

IR Interpreted Acres: 154 - Round Top

Not Covered by Infra-red Scan:

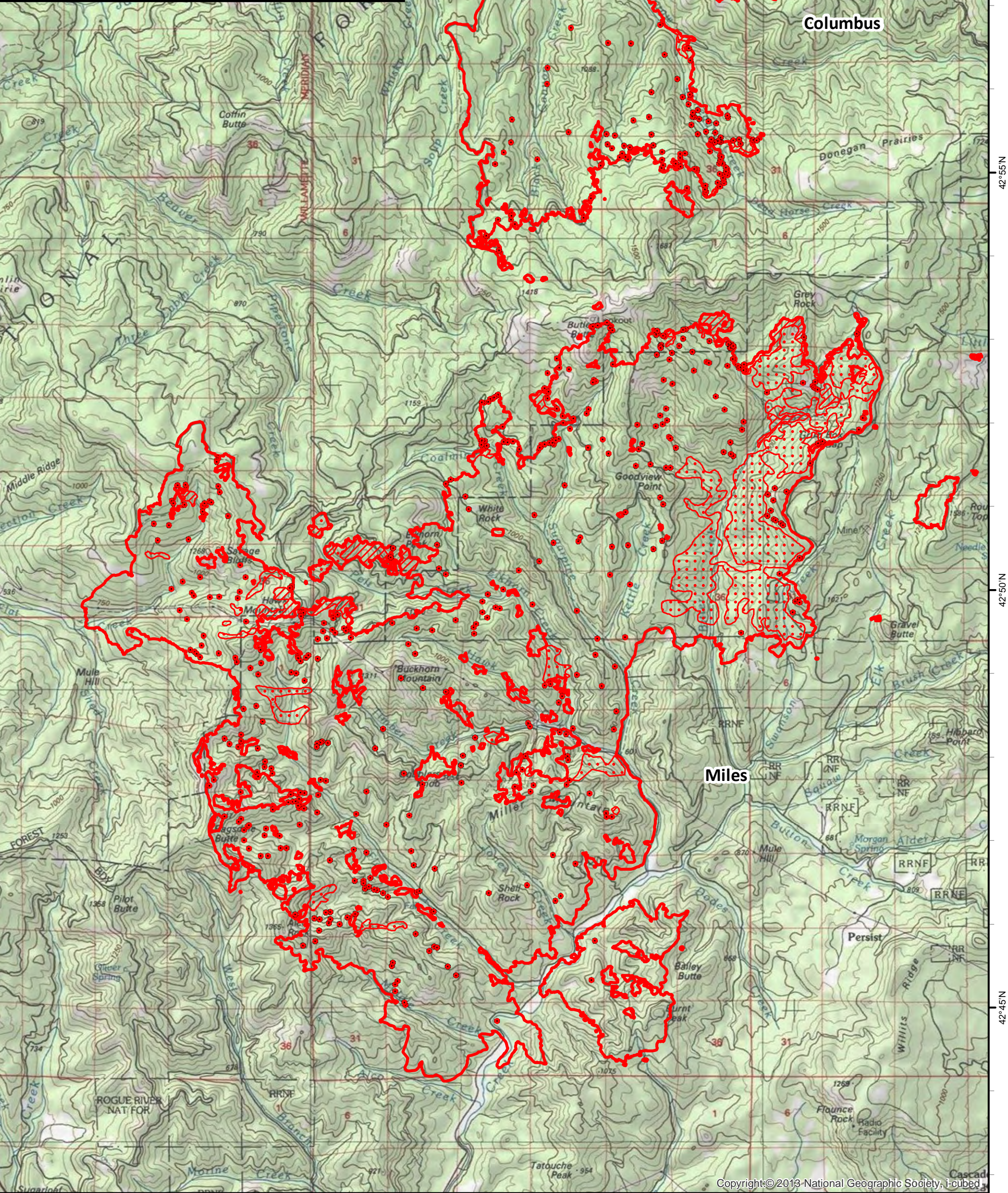
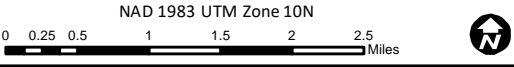
Gravel - 2.8 acres, Junction - 6.4 acres,

North Top - 1.5 acres, Railroad Gap - 35.4 acres,

Snowshoe - 3,816 acres, Sunshine - 3.5 acres

IRIN: Tammy Hocut

- Isolated Heat Sources
- Heat Perimeter
- Intense Heat
- Scattered Heat



122°50'W 122°45'W 122°40'W 122°35'W

43°0'N 42°55'N 42°50'N 42°45'N