

122°40'W

Infrared Map

Miles (OR-UPF-000246)

Map Date: 08/25/2018

Imagery Date: 08/25/2018

Imagery Time: 0157 MDT

IR Interpreted Acres: 10,227 - Columbus

IR Interpreted Acres: 35,641 - Miles

IR Interpreted Acres: 154 - Round Top

Not Covered by Infra-red Scan:

Gravel - 2.8 acres, Junction - 6.4 acres,

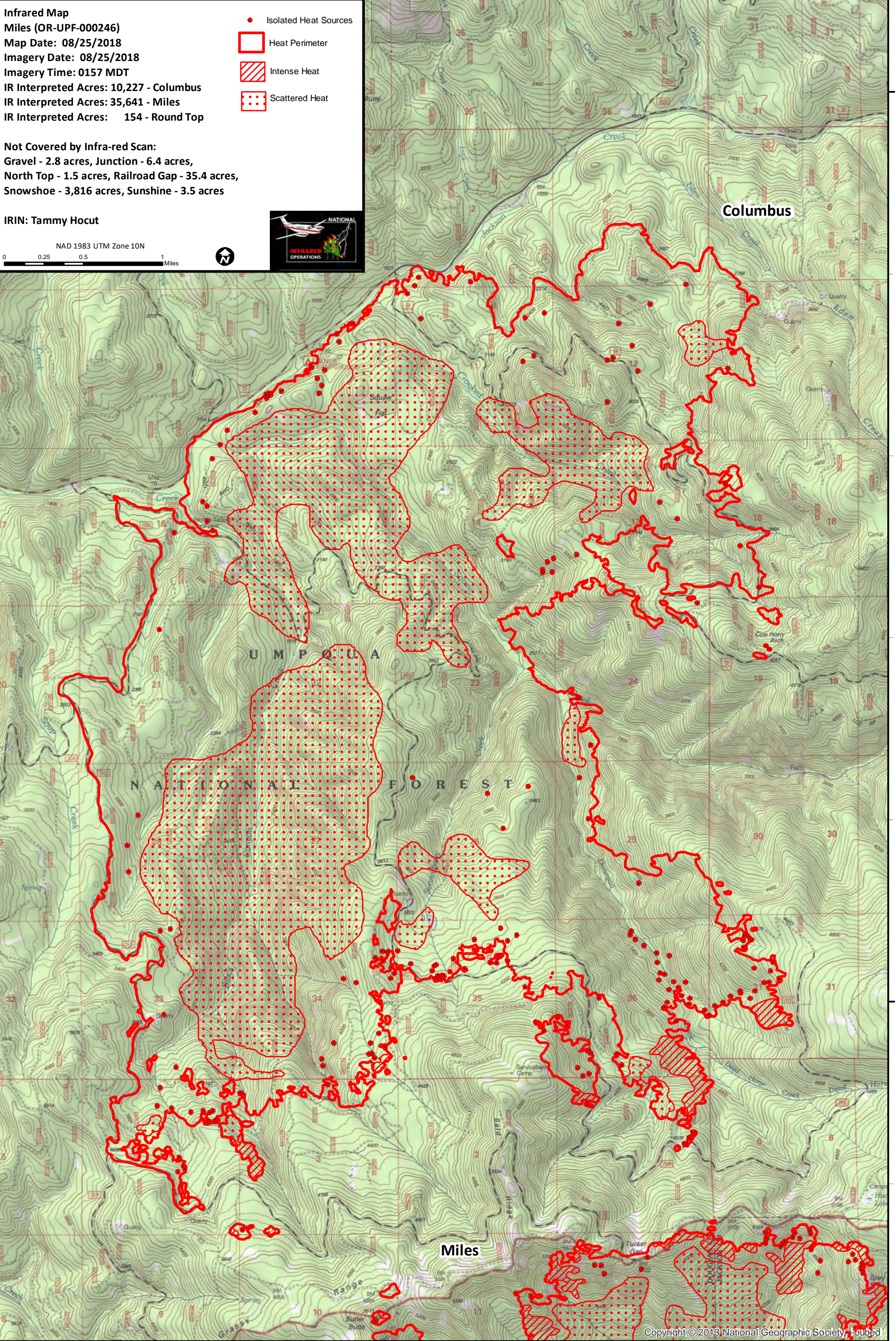
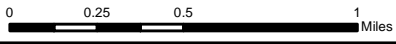
North Top - 1.5 acres, Railroad Gap - 35.4 acres,

Snowshoe - 3,816 acres, Sunshine - 3.5 acres

IRIN: Tammy Hocut

- Isolated Heat Sources
- Heat Perimeter
- Intense Heat
- Scattered Heat

NAD 1983 UTM Zone 10N



43°0'N

43°0'N

42°55'N

42°55'N

122°40'W