

# Ownership Map

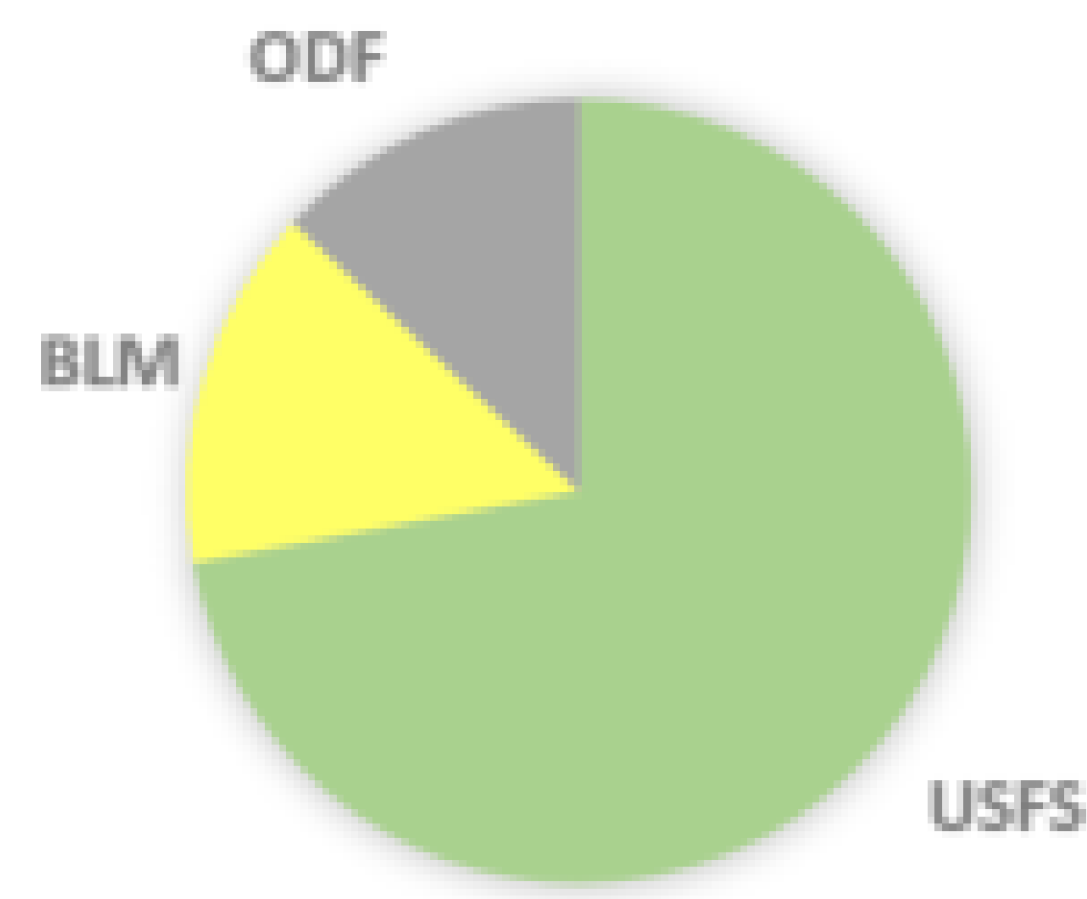
Aug 13, 2018

## Legend

- Fire Perimeter
- ▲ Prominent Summits
- ★ City
- BLM Districts
- Ranger District
- State Boundaries
- Bureau of Land Management
- U.S. Fish and Wildlife Service
- Bureau of Reclamation
- U.S. Forest Service
- U.S. National Park Service
- State, Private, Local Govt, and Private

## Total

Owner	Acres
USFS	118,598
BLM	24,579
ODF	21,381



Base of IR Data as of 8/12/2018 0200hrs

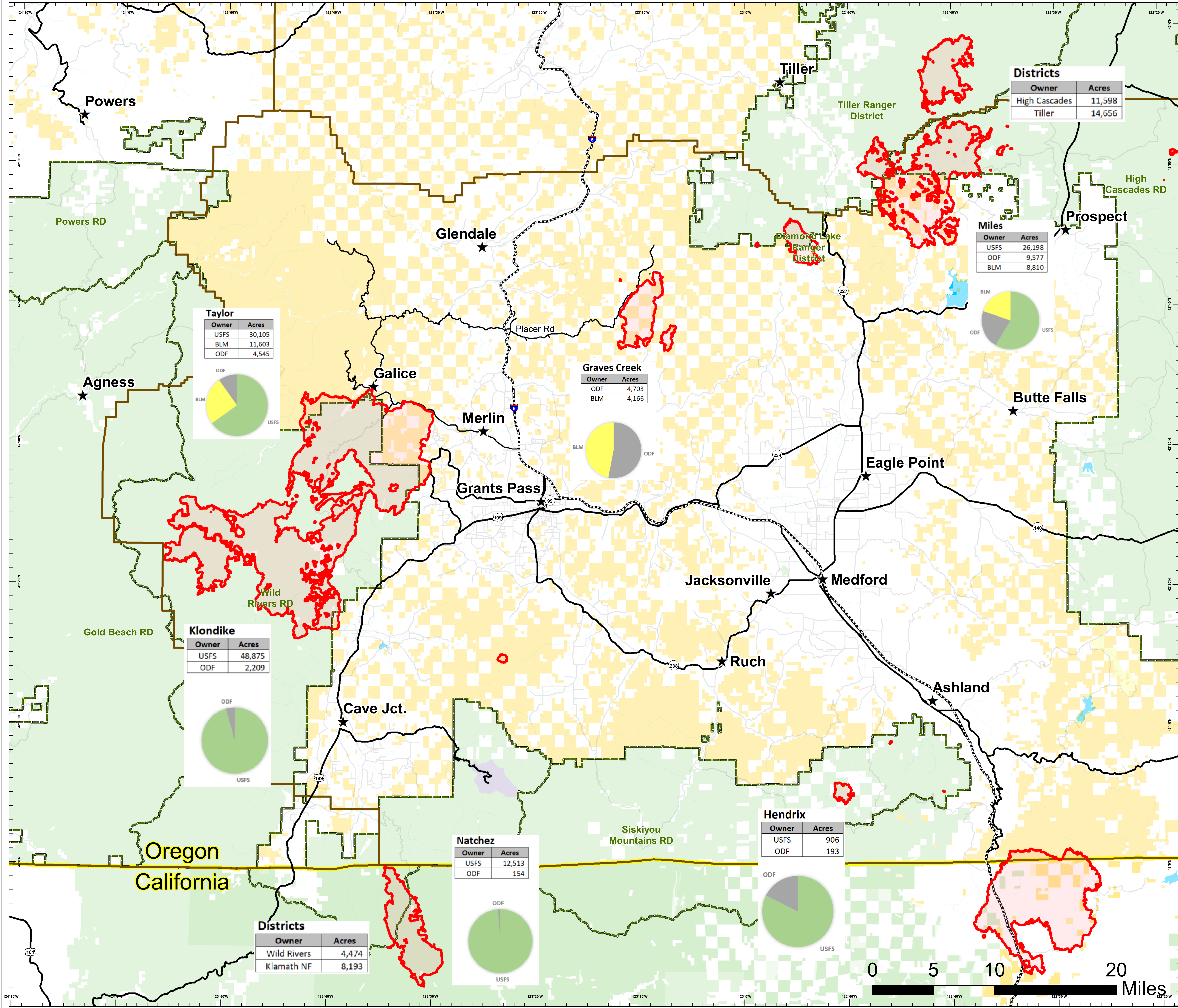
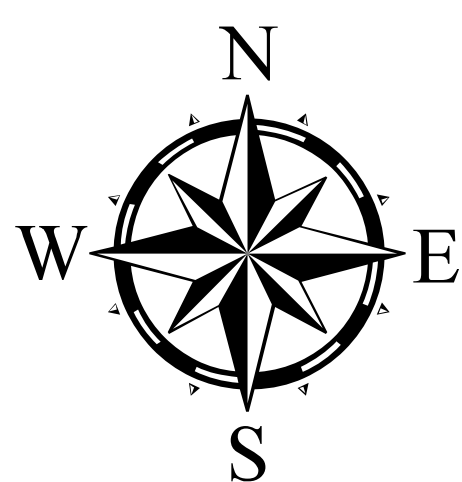


Created by:  
[stclark@blm.gov](mailto:stclark@blm.gov)  
[dassali@fs.fed.us](mailto:dassali@fs.fed.us)  
[juergs@firenet.us](mailto:juergs@firenet.us)

8/13/2018 8:06 PT



Use Avenza Maps App



### Taylor

Owner	Acres
USFS	30,105
BLM	11,603
ODF	4,545

### Graves Creek

Owner	Acres
ODF	4,703
BLM	4,166

### Klondike

Owner	Acres
USFS	48,875
ODF	2,209

### Natchez

Owner	Acres
USFS	12,513
ODF	154

### Hendrix

Owner	Acres
USFS	906
ODF	193

### Districts

Owner	Acres
High Cascades	11,598
Tiller	14,656

### Miles

Owner	Acres
USFS	26,198
ODF	9,577
BLM	8,810

### Districts

Owner	Acres
Wild Rivers	4,474
Klamath NF	8,193

